

## Catchment Sensitive Farming Assessment Form

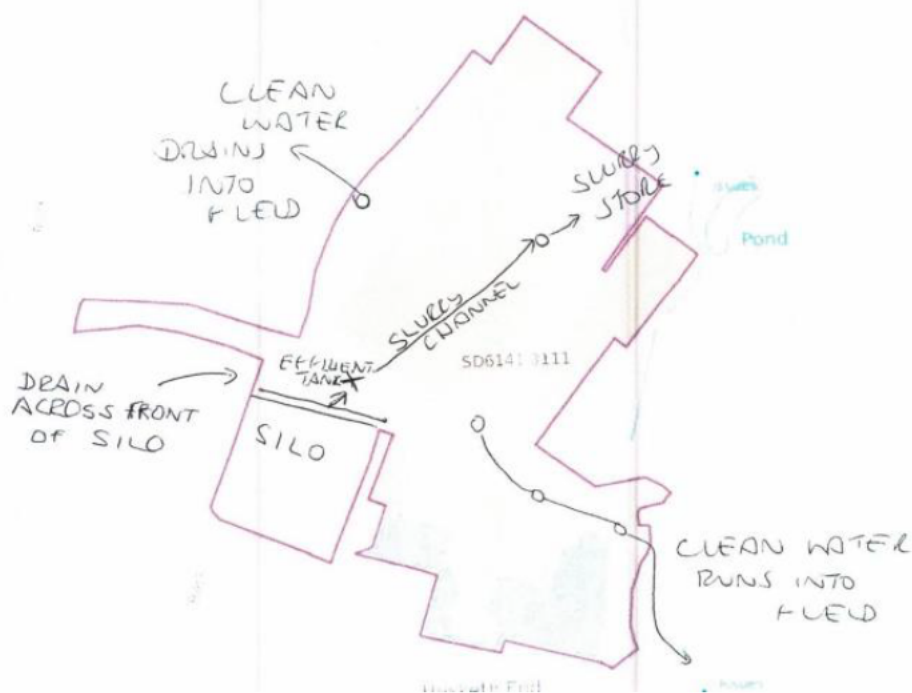
<b>Applicant name</b>	MJ & KE Kenyon				
<b>Farm name</b>	Hesketh End Farm, Judd Holmes Lane, Chipping, Preston, PR3 2TJ				
<b>CPH number</b>	21/115/0015				
<b>SBI Number</b>	106173026				
<b>Water Framework Directive Management Catchment</b>	Ribble				
<b>River Basin District</b>	North West				
<b>Form completed by: (CSFO or FaLMA supplier)</b>					
<b>Name</b>	Lynsey Mitchell				
<b>Company if applicable</b>					
<b>E mail address</b>	[REDACTED]				
<b>Telephone number</b>	[REDACTED]				
<b>Any additional comments</b>					
<b>Pollutant priorities and pressures:</b>					
<p><b>Pollutant priorities in the catchment as targeted by CSF:</b></p> <p>Nitrate Priority: Surface water - Med</p> <p>Pesticide Priority: N/A</p> <p>Faecal Indicator Organisms Priority: Med</p> <p>Phosphate Priority: Med</p> <p>Sediment Priority: Med</p> <p>Flood Risk Management Priorities: No</p> <p>Air quality Priority: No</p> <p><b>Farm description:</b> Extending to just over 101 hectares, Hesketh End Farm supports a dairy herd of 300 milkers with young stock kept on a different yard. The herd are kept on cubicles and produce slurry which is stored to the rear of the stock buildings with silage effluent draining to the same store (see (2) below).</p> <p><b>Pollutant pressures on farm i.e. water and air:</b> The cracked yard surface currently makes cleaning inefficient in places and the farmers are rightly concerned by the pollution risk. In addition, the old silage clamp does not have a perimeter drain installed. On the day of my visit, there were clear signs of effluent running out of the store and down the sloping yard and towards clean water open grates which will directly input into the Loud – Upper waterbody with negative impact.</p>					
<b>The following options are approved by CSF for inclusion in a CS agreement:</b>					
CS Item / option	OS Map Ref	Field ref.	Max agreed total to be applied for	Unit of Measure (ha, m, m <sup>2</sup> , units)	Additional notes to be included in agreement document e.g. description of item / option, what is being covered etc.
RP15	SD6141	3111	100	m <sup>2</sup>	Aerial photos (3) and (4) show approximate locations. Mr & Mrs Kenyon have been advised of their responsibility to direct silage liquor into suitable containment.
RP15	SD6141	3111	600	m <sup>2</sup>	

## Any other supporting information or documents



(1)

Aerial photo (1) above demonstrates hydrological connection between Hesketh End Farm and the waterbody: Loud – Upper (moderate condition). There is a gentle gradient on the yard that will guide rainwater over the surface to the clean water drains lower down giving a significant risk of pollution if the yard surface is not improved to an easily cleanable state.

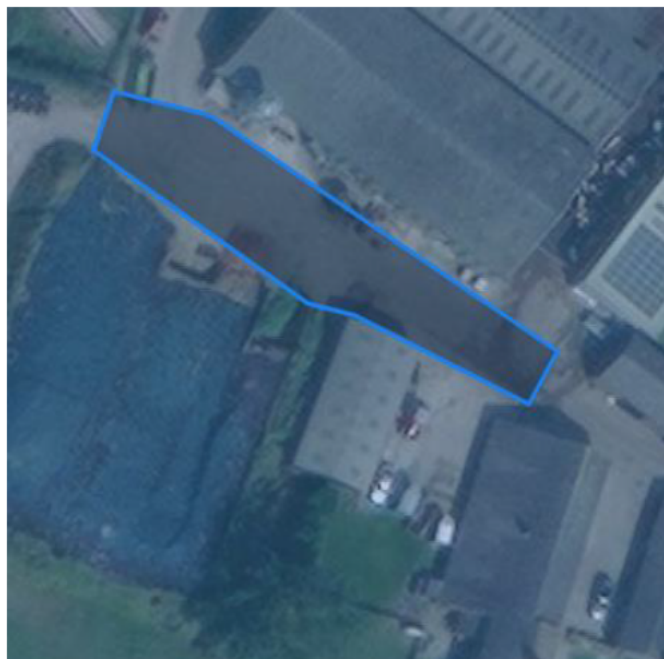


(2)

Drainage plan (2) above demonstrates how clean and dirty water will be separated upon completion of the project. Note the installation of a drain to the front of the silage clamp to direct any liquor leaving the store into containment.



(3)



(4)

Aerial photos (3) and (4) above give approximate locations. Note: an additional strip of RP15 has been approved (3) to support the installation of a drain to the lower edge of the silage clamp. This second drain to the perimeter of the clamp is not noted on the drainage plan but if Mr & Mrs Kenyon were to install, it would be of significant benefit in ensuring any silage effluent weeping through the lower wall was directed to suitable containment.

#### Additional requirements

**RP 15 i.e., Concrete yard renewal**, this item has been approved on the basis that the yard is kept clean and managed as a clean yard area, with no dirty water running off the site.

**Public Right of Way** - If any works affect a public right of way applicants will need to contact the relevant highways authority to discuss the proposal and seek any necessary consents or support.

**Sites of Special Scientific Interest (SSSI) and Scheduled Monuments (SM)** – Where either a SSSI or SM are present on the farm, the relevant land parcels must be included within a CS Mid Tier agreement, and an appropriate option placed on them where available.

High		Medium	X	Low	
------	--	--------	---	-----	--

#### Justification to support the CSF approval and score or reasons for declining:

- All items included in this approval are approved by CSF in locations noted above.
- There is hydrological connectivity between Hesketh End Farm and the nearby waterbody: Loud - Upper (moderate ecological condition).
- Once concrete yard renewal has been completed, the yard will be kept clean significantly reducing the risk of polluted run-off (slurry) entering the clean water drainage system. It is noted that the silage clamp pre-dates [Storing silage, slurry and agricultural fuel oil - GOV.UK](#)



[www.gov.uk](http://www.gov.uk)) regulation (providing there is not a significant risk of pollution) and Mr & Mrs Kenyon have been advised of the requirement to direct silage liquor into suitable containment. In this aim, there is potential to install part of a perimeter drain to the front and lower side of the store which will significantly reduce such risk. The above works will reduce pollution pressures locally namely, FIOs, phosphates, surface water nitrates and sediment.

- Engagement with CSF dates back to 2009..
- This item will not damage other environmental interests and there is no suggestion of pollution swapping.

**Form completed by:**

<b>Name</b>	Lynsey Mitchell (CSF)	
<b>Signature</b>	<i>Lynsey Mitchell</i>	<b>Date:</b> 18/07/2024