



Calder Oak LTD
Altham corn mill.
Burnley road.
Altham. Lancashire
BB5 5UP



Date 02/10/2024

Glenn Slater Building Contractors Ltd.

Quote Ref GS-Half truss-001
Drawing ref Half Truss

Scope of works & terms of business

Customers notes:

Following a site inspection, it was observed that the walls and overall structure of the building are not square. Additionally, certain areas around the half truss were deemed unsafe for work. As a result, it has not been possible to produce exact computer-generated drawings. However, we have made every effort to complete the drawings as accurately as possible.

Considering the time constraints, particularly with the approach of winter, we have moved forward with the project.

In light of these challenges, please account for any necessary stonework to accommodate the placement of common rafters and the areas where the purlins will be integrated into the gable walls.

Continued:

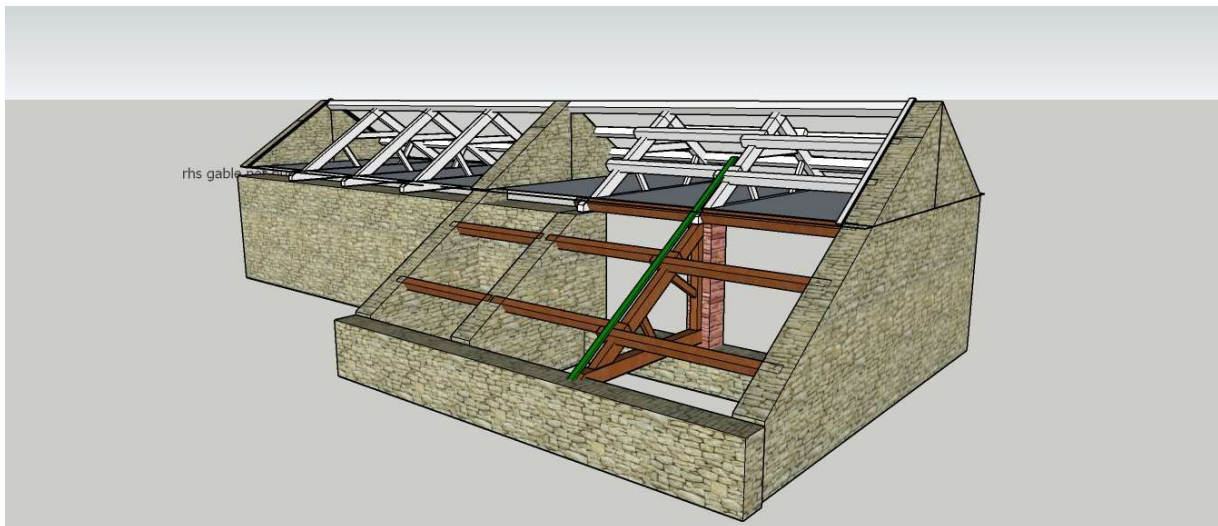
Work to be undertake by Calder oak:

- Supply manufactured green oak half trusses as per drawing GS-Half-truss-001
- Supply purlins as per above
- Traditional M&T joints with anti-corrosion steel fittings where applicable
- Adze all visible timber to half truss
- Installation of half truss & purlins

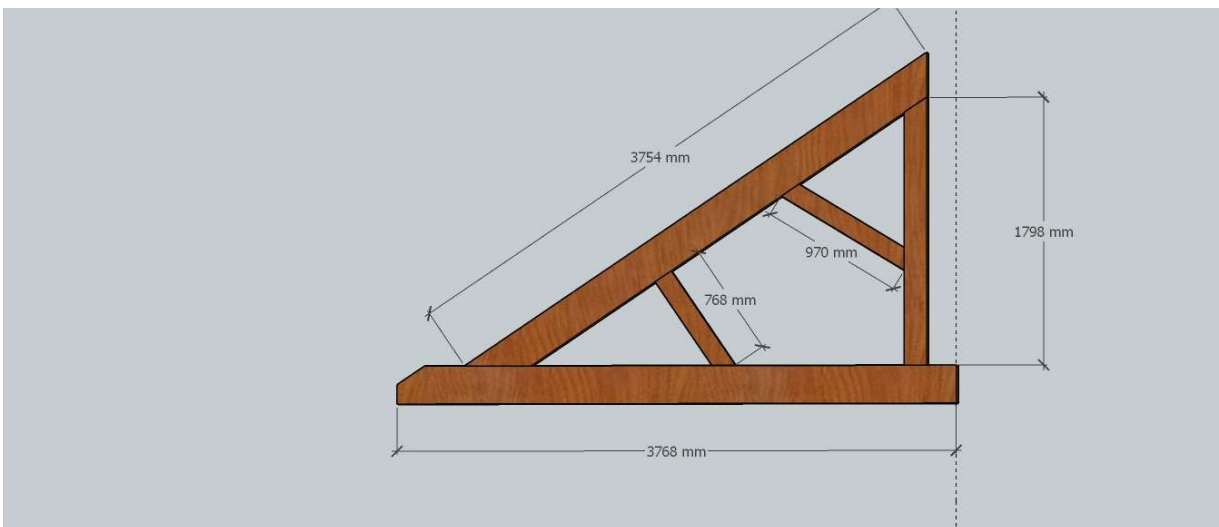
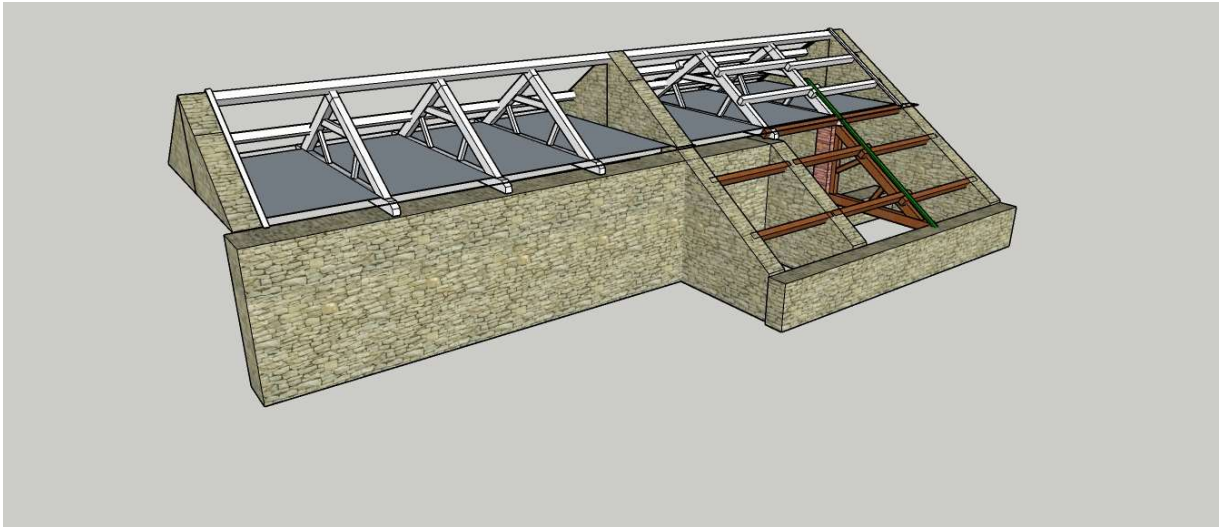
Work not included in estimate or to be undertaken by Calder Oak Ltd:

- Dismantling of existing half truss and purlins
- Any groundwork or building work including supporting walls or pad stones.
- Any wet trade including lime/cement work
- Fitting of softwood common rafters slate batons or roofing materials.

Half truss model: common rafter seen in green for illustration only



Continued:



Cleats to be added to support the purlins similar to previous trusses not illustrated.

Cutting list:

Member	Width mm	Width CM	Height mm	Height CM	Span m	Total CM	Quantity
Tie	170	0.17	250	0.25	3.8	0.1615	1
P.R.	150	0.15	250	0.25	3.8	0.1425	1
brace 1	130	0.13	70	0.07	1.3	0.01183	1
brace 2	130	0.13	70	0.07	1	0.0091	1
king post		0		0		0	
		0		0		0	
purlins small bay	200	0.2	150	0.15	2.8	0.084	2
purlins	200	0.2	150	0.15	3.2	0.096	6
		0		0		0	

All visible oak to be machine adzed. No oil treatment

.

Installation:

After site inspection the safest option will be to bring in a crane to lift the half truss and purlins over the top of the building and lower in place. A scaffolding should be erected under the half truss by Glen Slater

Delivery

We will deliver the half truss and purlins in member parts and assemble onsite to reduce transport costs included in the estimate costs.

Continued

Health and safety & welfare:

Risk assessments and method statements can be provided if required, only trained staff will be used to aid any installation. Calder Oak cannot be held responsible for the safety any third-party tradesmen or people traffic on site.

Toilet facilities should be provided by the project manager.
Public liability insurance is covered by Calder Oak

Drying of green oak:

Green oak can take several years to complete drying and is subject to cracking and shrinking, once the members have been installed, this is a natural part of the aging process and this has been allowed for in the engineer's calculations and should not affect the integrity of the design however, this in time may impede the operation of any retro fit doors and windows, including water ingress. Calder Oak LTD does not accept liability for any issues arising from the aging process. Any green oak product should be kept at a temperature below 18 degrees centigrade for at least the first year of installation to reduce the speed of the drying process.

Staining & tannings:

Green oak contains tannings, which will leak out from inside the oak, this produces a brown coffee staining effect and this will be apparent especially on stone work, patio flags and walls. In most cases this will simply wash off by using a gentle brick acid or sugar soap type detergent, if the staining is treated without delay, it is the respectability of the client or project manager to clean any subsequent staining.

Mild steel nails or screws must NOT be used by any third-party contactors as this will stain the oak blue-black ink and could compromise the strength of the fixing. Cutting mild steel with grinding discs nearby can also cause blanket staining from the iron filling dust.

Glazing and doors:

N/A

Dairy slots and schedule:

Dairy slots can only be offered once we have taken a deposit for the total cost of the works quoted to be undertaken by Calder Oak LTD, the dairy slot is a guide, any unforeseen complications may cause delays in both the manufacture and installation of the product. Calder Oak will always keep our customers updated on timescales and make them aware that there may be delays. If the customer is not ready for the product once we have manufactured, we will hold the work in our yard until the customer is ready for the project. Foul weather conditions can in some cases mean a cancelation of site work, if a crane has been ordered 24hrs notice must be given to the crane operator to avoid incurred costs.

Continued

Payment Terms and conditions of business

A 30% deposit is required upon acceptance of any quotation. This deposit must be received before materials can be ordered, work can commence, or a schedule can be confirmed. The remaining balance is due upon completion of manufacturing and must be paid before any completed work leaves our premises.

We require full payment of all invoices upon submission. Credit terms or flexible payment plans are not available unless agreed upon in writing. Ownership of goods remains with us until full payment has been received.

Late payments exceeding 30 days from the invoice date will incur an additional 10% fee.
