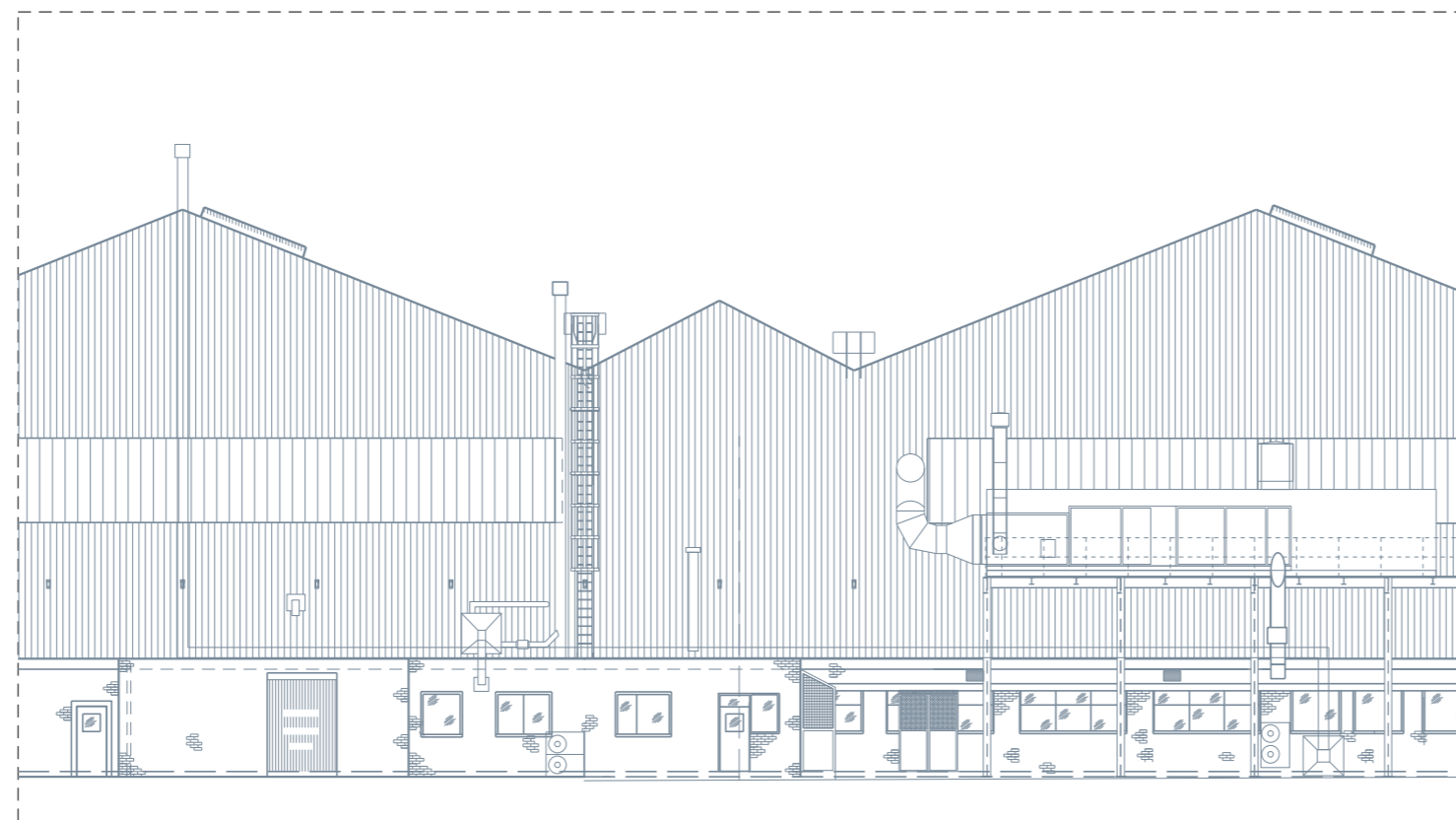



EXISTING PLAN VIEW



EXISTING ELEVATION VIEW

Rev.	A	FOR INFORMATION	17-12-24
	Description		Date
<p>No part of this drawing may be copied or reproduced or any information contained on this drawing given to a third party without the prior written permission of:  <b>Infrastructure and Facilities Services - Air BAE Systems (Operations) Ltd.</b>          This drawing contains information, as held on the I&amp;FS FM CAD System at the date of printing only... 17/12/2024</p>			
Project			
24S0052 - 2 SHED TC CALIBRATION			
Title			
EXISTING PLAN AND ELEVATIONS			
Status	Suitable For Information		
S2			
Designer	Engineer	Date Created	
A PLINSTON		17/12/2024	
Scale	Project/Sheet Number		Rev.
1:150 @ A2 <small>Printed at 1:N.T.S.</small>	24S0052 / 003		A
Drawing Reference			
24S0052-BAES-002-2-DR-F-003			
<b>Infrastructure and Facilities Services - Air</b> BAE SYSTEMS SAMLESBURY AERODROME BALDERSTONE BLACKBURN LANCASHIRE BB2 7LF Tel: 03300 476166			
			
Samlesbury Site <small>© BAE Systems (Operations) Ltd. All rights reserved</small>			
Company Marking			
BAE SYSTEMS PROPRIETARY			
Government Marking			
NOT APPLICABLE			