

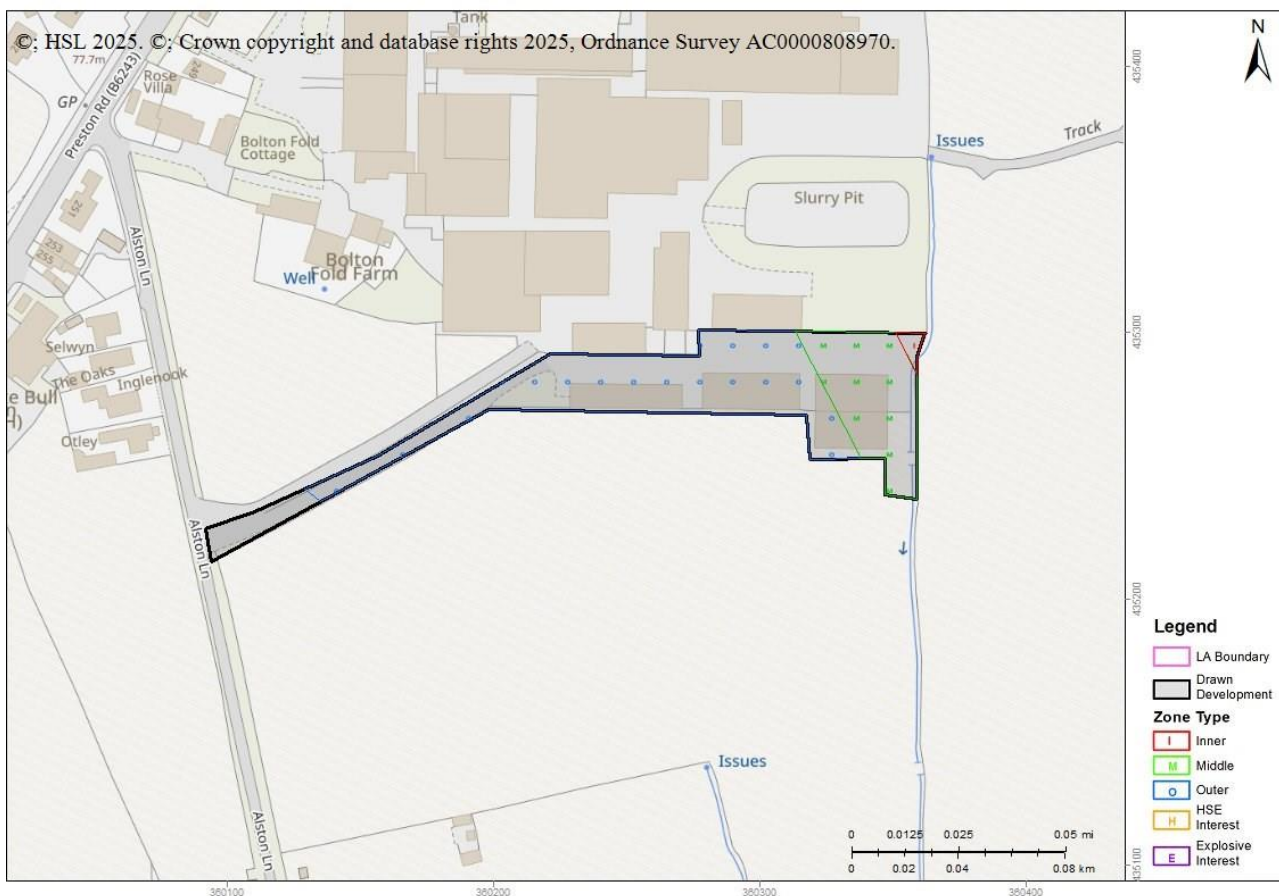
## Advice : HSL-250221155537-101 Crosses Consultation Zone

Please enter further details about the proposed development by continuing with the enquiry on the HSE's Planning Advice Web App from the Previous Enquiries tab either now or at a later time, unless the Web App has stopped the process and notified you to contact HSE.

**Your Ref:** 3/2025/0141

**Development Name:** Bolton Fold Farm, Alston Lane, Longridge PR3 3BN

**Comments:** Regularisation of erection of three commercial buildings (10 commercial units Use Class E) and associated works.



The proposed development site which you have identified currently lies within the consultation distance (CD) of at least one major hazard site and/or major accident hazard pipeline; HSE needs to be consulted on any developments on this site.

This advice report has been generated using information supplied by Jane Tucker at Ribble Valley District (B) on 21 February 2025.

You will also need to contact the pipeline operator as they may have additional constraints on development near their pipeline.

- 8408\_2688 National Gas

HSL/HSE accepts no liability for the accuracy of the pipeline routing data received from a 3rd party. HSE/HSL also accepts no liability if you do not consult with the pipeline operator.

You may wish to contact HSE's Planning Advice team to discuss the above enquiry result on 0203 028 3708 or by email at [lupenquiries@hse.gov.uk](mailto:lupenquiries@hse.gov.uk).