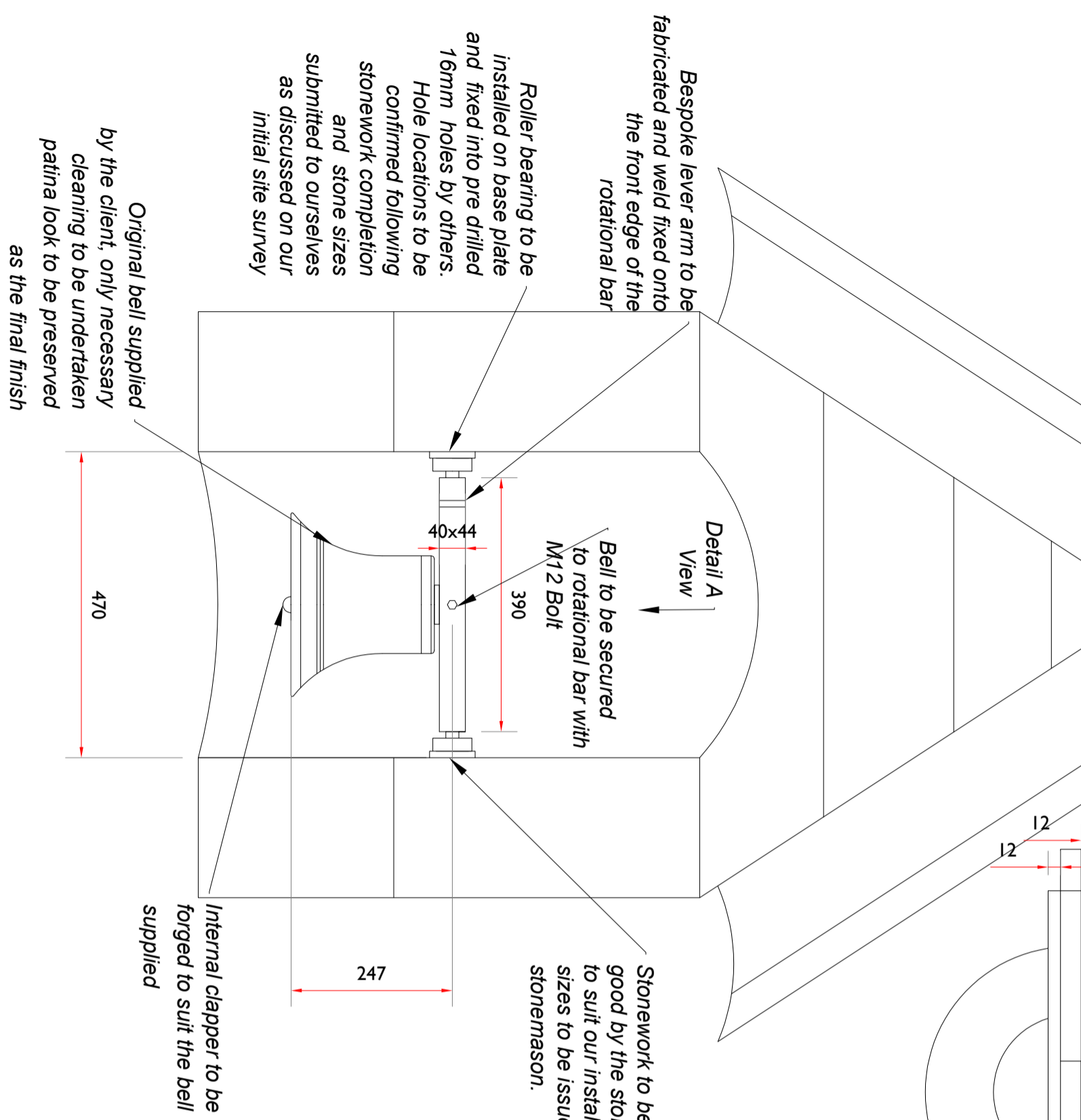
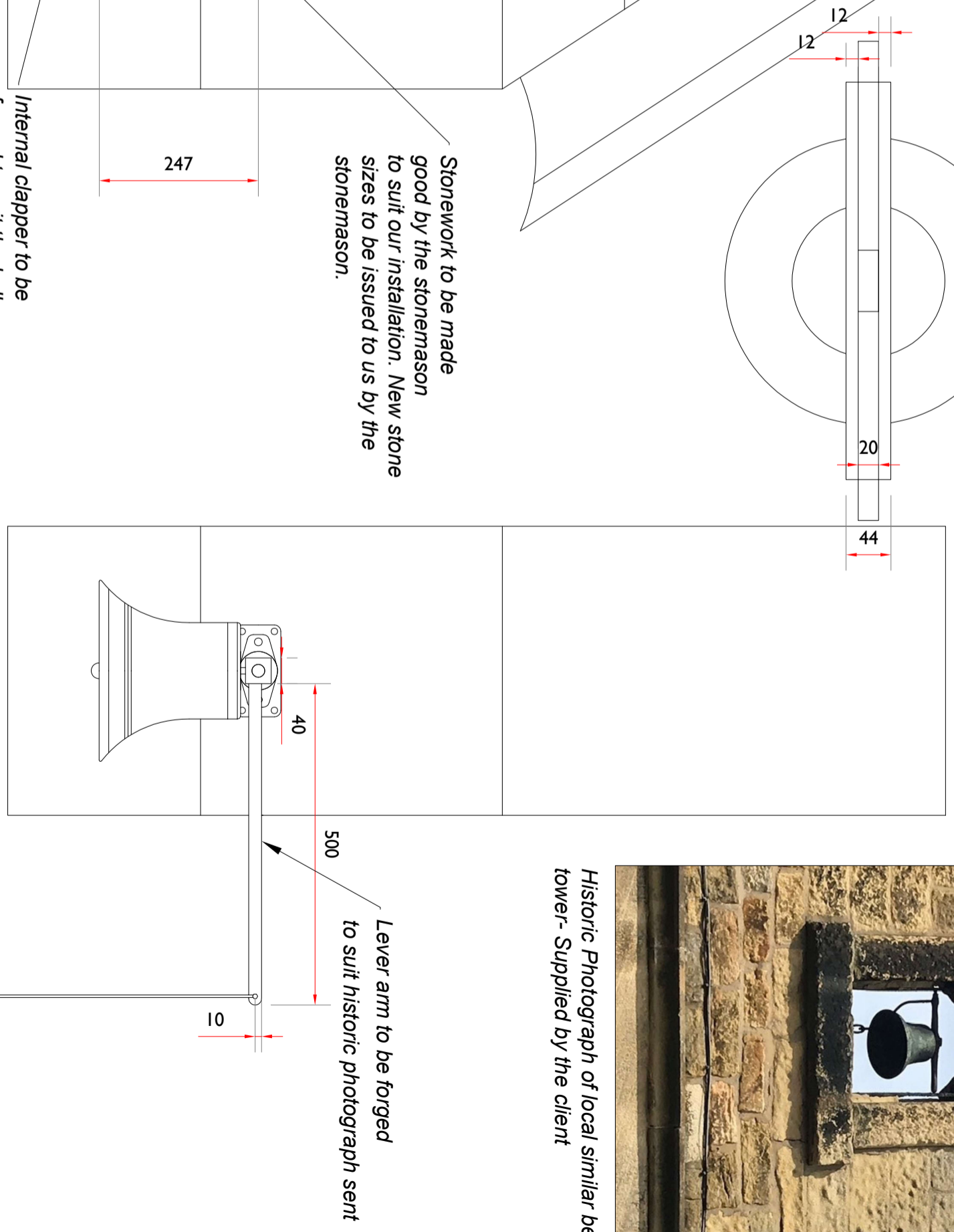


620/A/100[A]- Newton in Bowland School Bell

Rear Elevation



Side Elevation



Historic Photograph of local similar bell tower- Supplied by the client

For Approval

Specification-
All items mild steel S275
Finish Painted 1 BS/RAL colour TBC

No.	revision	date	by	checked by
A1	>	06/02/25	SJ	SJ
B1	>			
C1	>			
D1	>			
E1	>			
F1	>			
G1	>			
H1	>			

Fabrication Tolerances
Usual Casting Tolerances Apply

3rd Angle Projection

IF IN DOUBT ASK

OVERSEAS PROJECTS AND EXPORTS PLEASE CONTACT US FOR QUOTATIONS AND TECHNICAL SUPPORT

WE CAN ASSIST WITH THE DESIGN AND MANUFACTURE OF ALL TYPES OF CASTING AND WELDING WORK

OUR SERVICES INCLUDE: DESIGN, MANUFACTURE, FINISHING, PAINTING, POLISHING, AND DELIVERY TO SITE

WE ARE A MEMBER OF THE BRITISH FOUNDRY INSTITUTE (BFI)

CALIBRE Metalwork

www.calibremetalwork.co.uk

Head Office: 100, The Old Mill, Bowland, Lancashire, LA20 9JG

Head Office: 100, The Old Mill, Bowland, Lancashire, LA20 9JG

Project: 620-Newton In Bowland School Bell

Client: Newton In Bowland School Bell GA

Issue: NTS

Drawn: SJ

Date: 17/10/23

Checked: S.J.G

For Approval