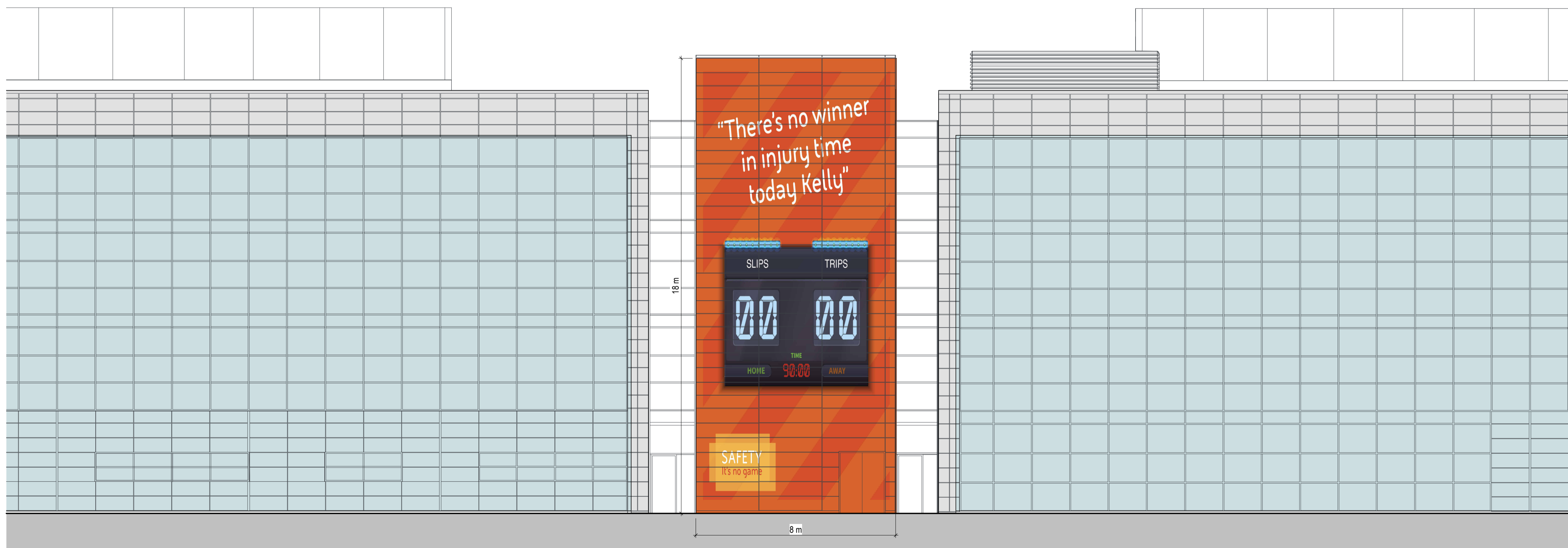


GENERAL NOTES

1. THIS DRAWING IS INTENDED TO BE PART OF THE BAE SYSTEMS ENGINEERING SPECIFICATION.
2. IT IS INTENDED TO TRANSFER BAE SYSTEMS BASIC REQUIREMENTS TO THE CONTRACTOR SO AS TO ENABLE THE CONTRACTOR TO FORMULATE THE FULL DESIGN.
3. ALL WORK, INCLUDING FURTHER DESIGN, IS THE RESPONSIBILITY OF THE CONTRACTOR.
4. ALL WORK, INCLUDING DESIGN, IS TO BE CARRIED OUT TO THE RELEVANT STANDARD, I.E. - B.S., CODE OF PRACTICE, LOCAL BYELAW, BAE SYSTEMS SPECIFICATION.
5. WHILE BAE ENDEAVOR TO PROVIDE ACCURATE RECORDS OF SERVICES, IT IS THE CONTRACTORS RESPONSIBILITY TO VERIFY LOCATIONS OF ALL SERVICES IN ORDER TO COMPLETE THE FINAL DESIGN.
6. 3D VISUALS ARE FOR ILLUSTRATIVE PURPOSES ONLY



SIGNAGE D - 15.5m x 11.5m
non illuminated sign



SIGNAGE G - 18m x 8m
non illuminated sign

P1 Initial Issue 25/04/10

| REV. | DESCRIPTION | DATE |
|------|-------------|------|
|------|-------------|------|

No part of this drawing may be copied or reproduced or any information contained on this drawing given to a third party without prior written permission of:

**Infrastructure and Facilities Services - AIR
BAE SYSTEMS (OPERATIONS) LTD.**

This drawing contains information, as held on the Facilities Management CAD System at the date of printing only.

PROJECT ADVERTISEMENT PLANNING CONSENT -
SAMBLESBURY

TITLE
ELEVATIONS D & G

STATUS | SUITABLE FOR
S2 | INFORMATION

| | | |
|----------------------|----------|--------------------------|
| DESIGNER A.HINTON | ENGINEER | DATE CREATED 04/10/25 |
|----------------------|----------|--------------------------|

| | |
|-------------------------|---|
| SCALE (@ A1) 1 : 100 | PROJECT / SHEET NUMBER 22W0051 / 015 |
|-------------------------|---|

| | |
|--|-----------|
| DRAWING REFERENCE 22W0051-BAES- 000- ZZ- DR- K- 015 | REV P1 |
|--|-----------|

Infrastructure and Facilities Services - Air

BAE SYSTEMS PLC
SAMBLESBURY AERODROME
BALDERSTONE
SAMBLESBURY
LANCASHIRE
BB2 7LF
Tel: 03300 476166



SAMBLESBURY SITE © BAE Systems (Operations) Ltd. All rights reserved

COMPANY MARKING
BAE SYSTEMS PROPRIETARY

GOVERNMENT MARKING
NOT APPLICABLE

