

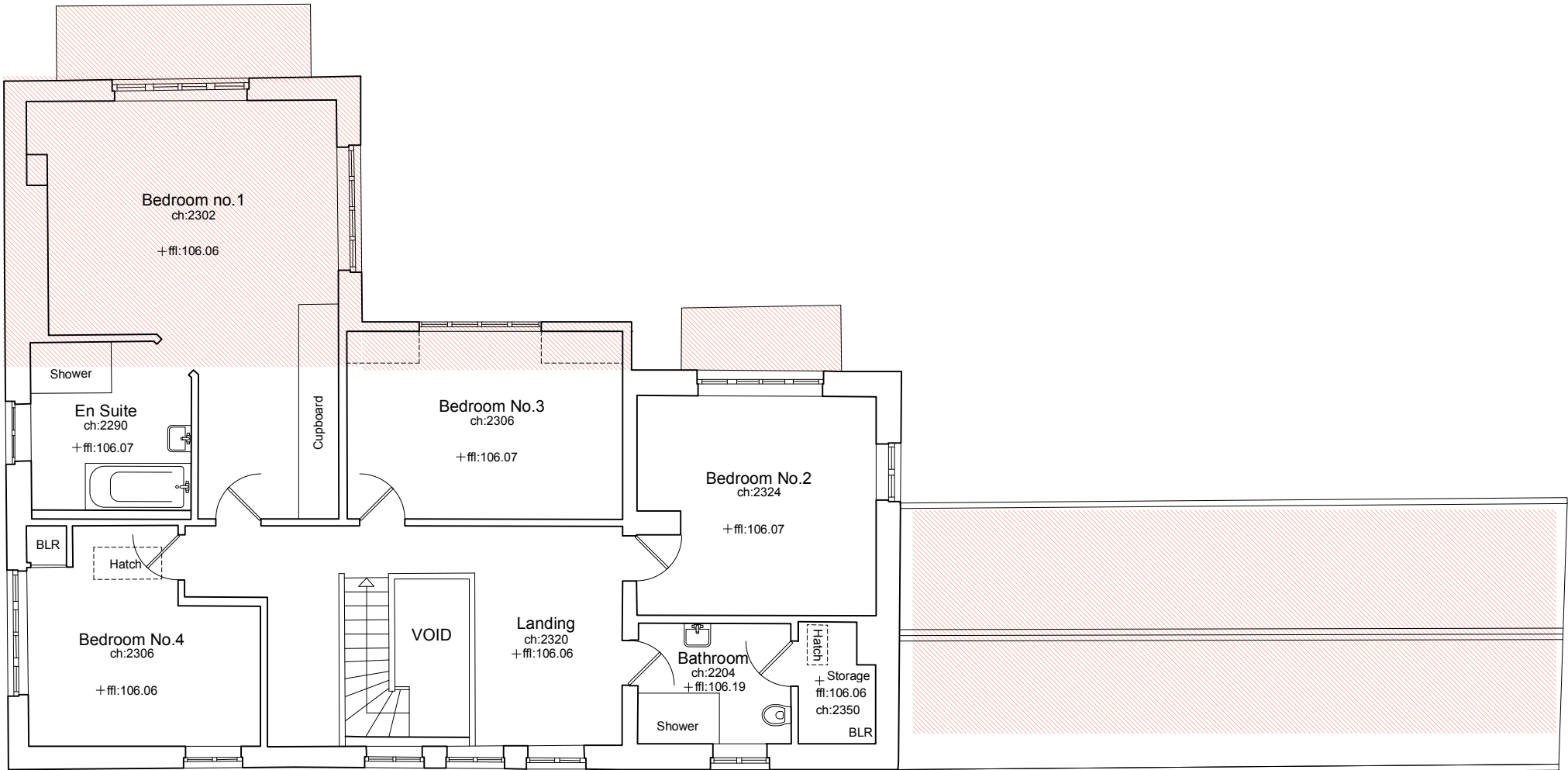
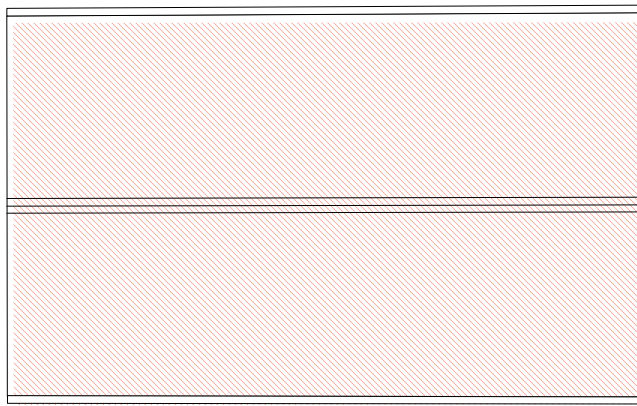
ABBREVIATIONS

CH Cable Height
ch Ceiling Height
CL Cover Level
EH Eaves Height
FFL Finished Floor Level
GU Gully
LP Lamp Post
MH Man Hole
RH Ridge/Roof Height
RWP Rain Water Pipe
SVP Soil Vent Pipe
TF Top of Fence
TW Top of Wall
usb Under Side of Beam

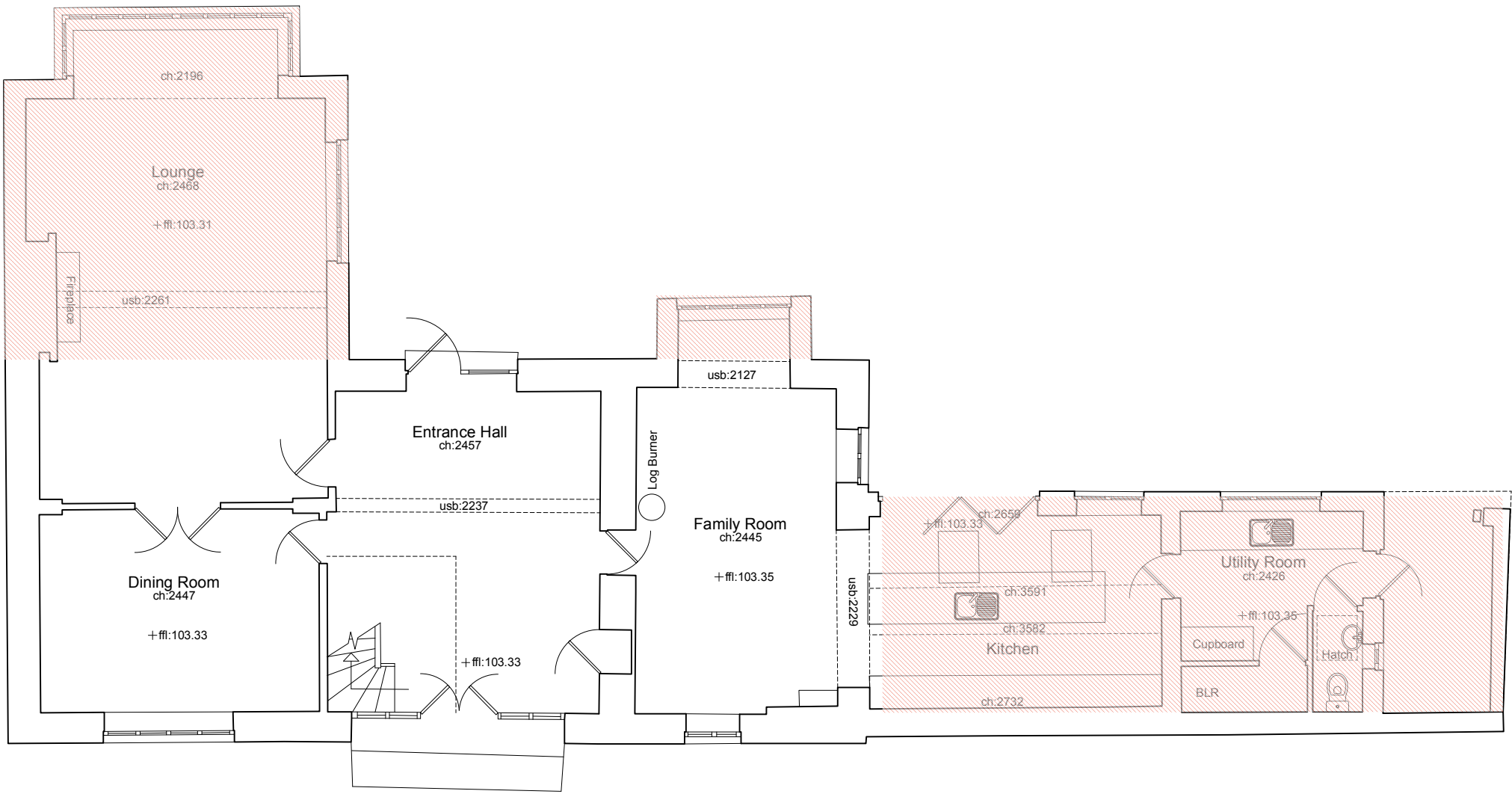
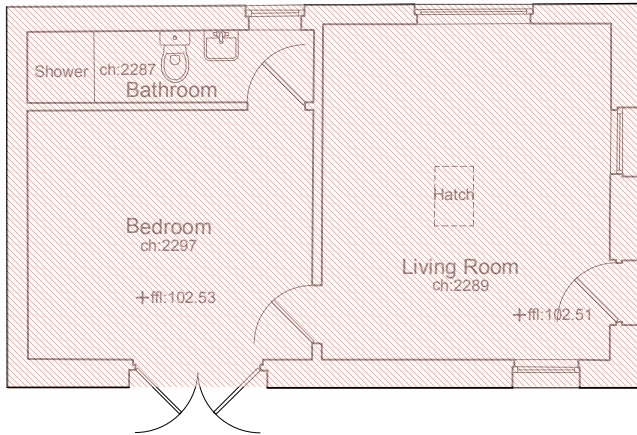
NOTE

All levels and coordinates relate to OSGB36(15) using GNSS data.

Levels defining edge of carriageway are observed at channel (bottom of kerb).



F First Floor Plan
Scale: 1:100



G Ground Floor Plan
Scale: 1:100

Stanton Andrews do not accept liability for any loss or degradation of information held in the drawing resulting from the translation from the original file format to any other file format or from the recipient's reading of it in any other programme or an earlier version of the programme. Stanton Andrews accept no liability for use of this drawing by parties other than the party for whom it was prepared or for purposes other than those for which it was prepared.

This drawing must be printed in colour, if this text is not RED the drawing must be reprinted.

Do not scale, use figured dimensions only. All dimensions to be checked on site. This drawing should be printed and read at the original size, as stated in title block. Stanton Andrews accept no responsibility for errors that occur as a result of reviewing this drawing at any other size. Stanton Andrews to be notified of any discrepancies before proceeding.

DWG issues - when this drawing is issued in DWG format it is an uncontrolled version and is provided to enable the recipient to prepare its own documents/drawings for which it is solely responsible. It is based on background information current at the time of issue. Stanton Andrews accept no liability for any alterations to, additions to or discrepancies arising out of changes to such background information which occur after it has been issued by Stanton Andrews.

Drawing is to be read in conjunction with all relevant consultants and specialist drawings.

'As existing' drawings based on information provided by others - no measured survey of the property has been undertaken by the architect.

This drawing is subject to copyright.

revision	date	note
A	june 2024	issued for pre-app
B	december 24	issued for planning
C	december 24	hatch to areas to be demolished in accordance with LA request
D	jan 25	extent of hatch clarified in accordance with LA request
E	march 25	issued for planning

