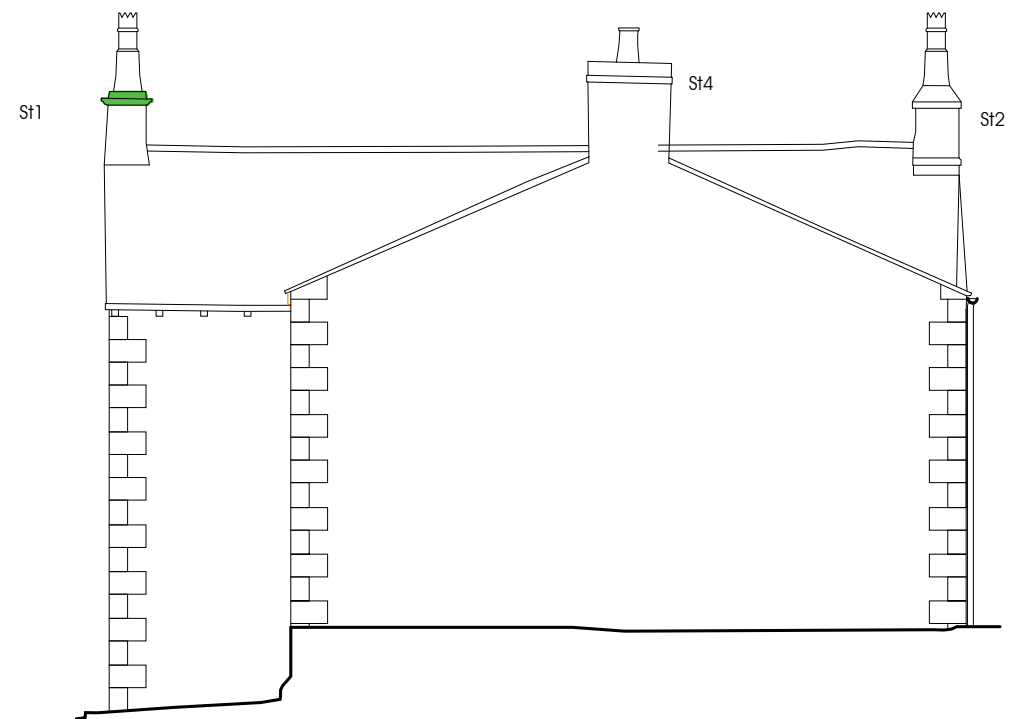
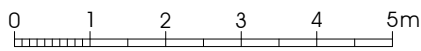
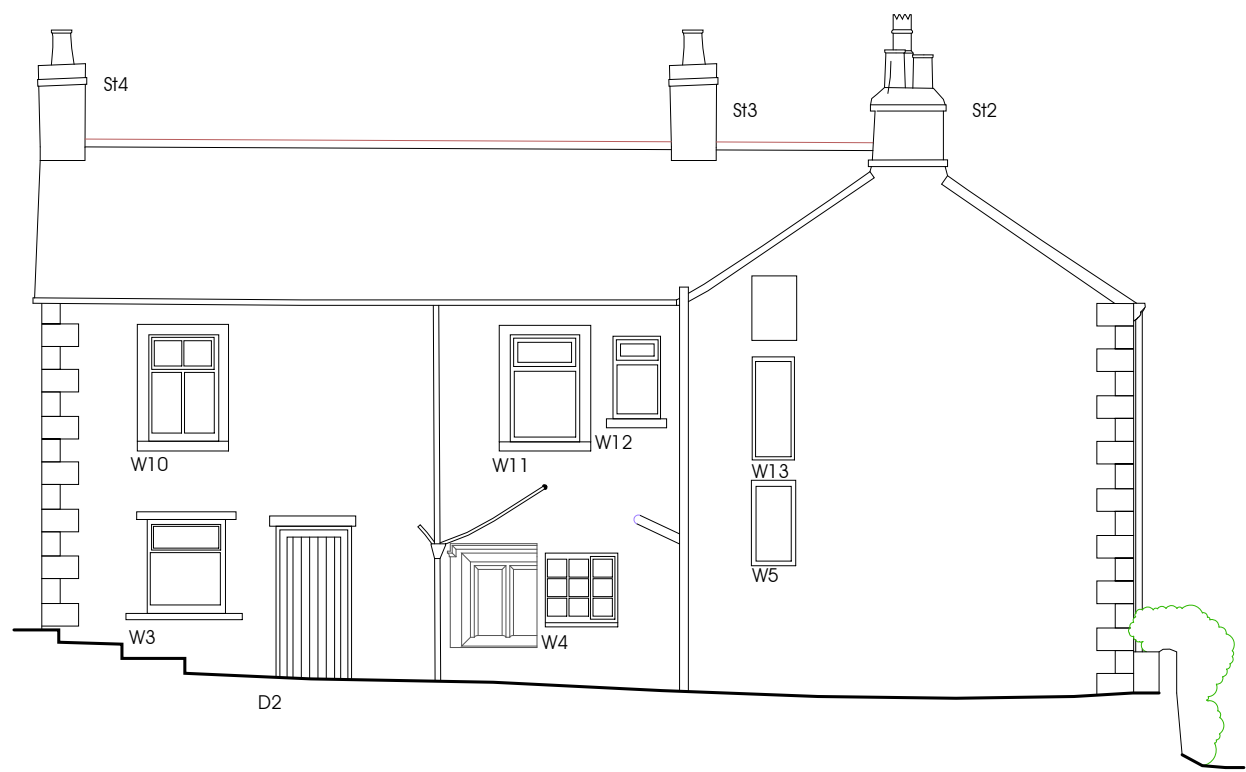




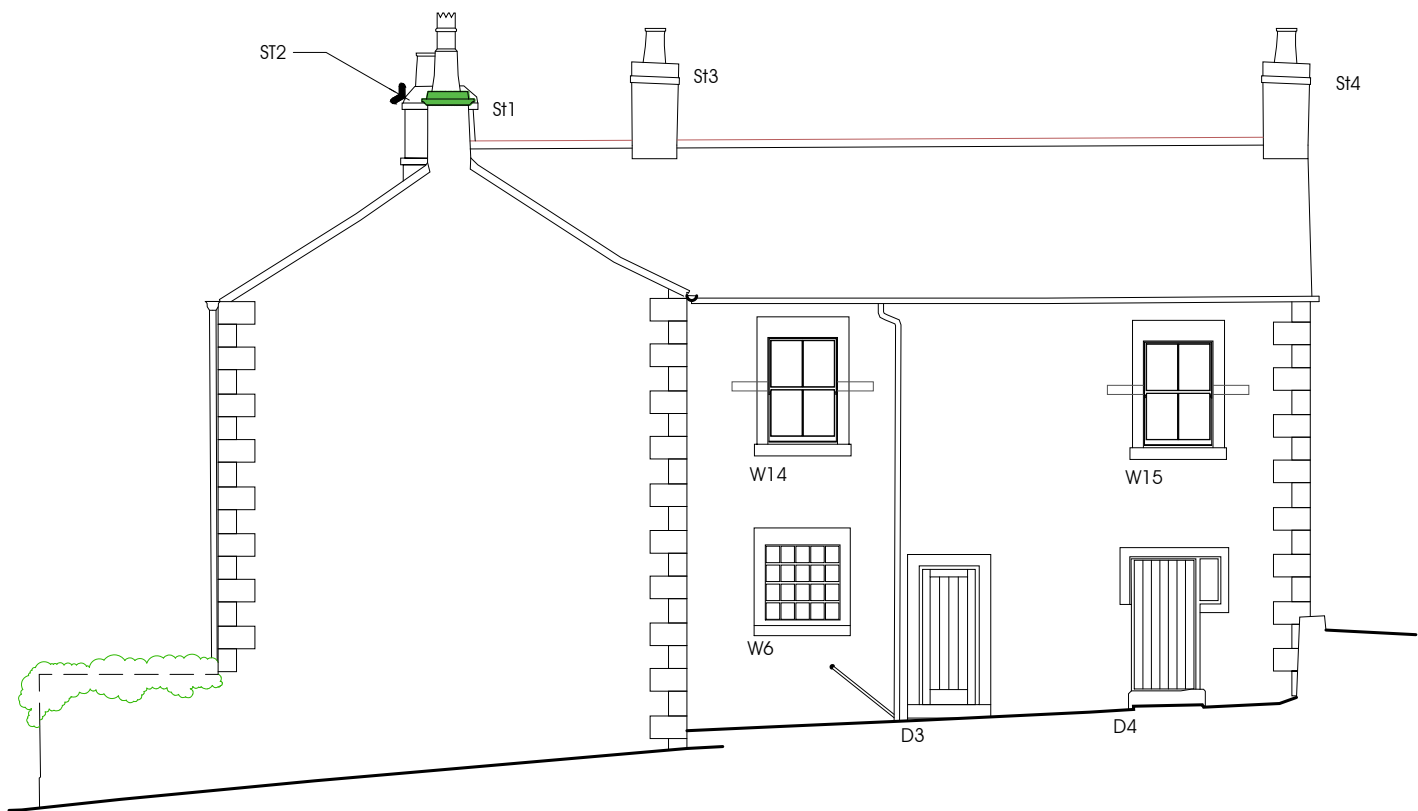
SOUTH EAST ELEVATION



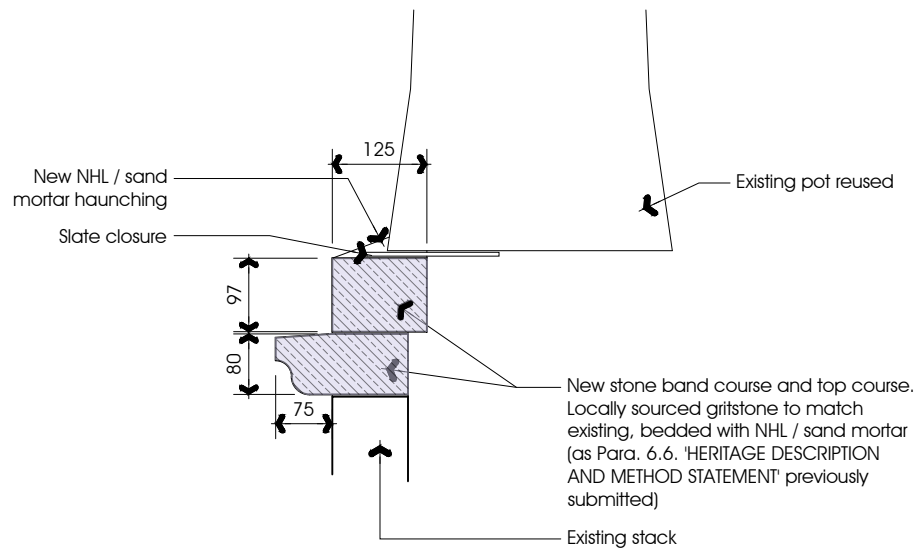
NORTH WEST ELEVATION



SOUTH WEST ELEVATION



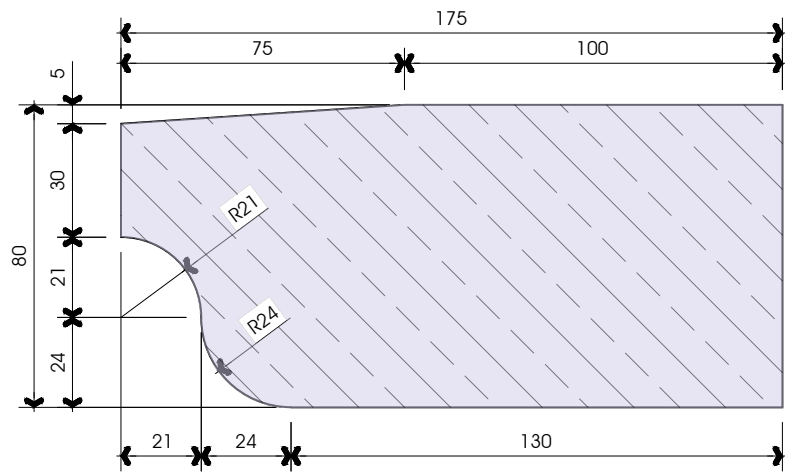
NORTH EAST ELEVATION



Chimney Coping Detail
Scale 1:10
0 100 300



Images showing existing chimney coping



Chimney Coping Profile
Scale 1:2



MATERIAL DATASHEET

FLETCHER BANK SANDSTONE

SOURCED FROM CUMBRIAN STONE LTD

Cumbrian Stone Ltd
Montal Place
Stalker Road
Gilwilly Industrial Estate
Penrith
CA11 9FE
sales@cumbrianstone.co.uk
Tel: 01768 867867
www.cumbrianstone.co.uk



Natural Variations



Please note that printed colours may vary from printer to printer therefore the images contained within this datasheet are for reference purposes only. We would always recommend obtaining a sample of the stone for colour matching purposes. We are happy to supply a sample of any of our stones on request at the point of order.

These natural variations are indicative of the features that can be found within this sandstone. It is not possible to guarantee that any of the features shown will be present in any given stone, nor is it possible to guarantee the exclusion of any of these features.



Quarry Location



Fletcher Bank Sandstone is quarried from the following quarry:

Fletcher Bank Quarry
Shuttleworth
operated by Marshalls Natural Stone Ltd.

as published in the Directory of Mines and Quarries 2020 by the British Geological Survey.

MATERIAL DATASHEET

FLETCHER BANK SANDSTONE

SOURCED FROM CUMBRIAN STONE LTD

Cumbrian Stone Ltd
Montal Place
Stalker Road
Gilwilly Industrial Estate
Penrith
CA11 9FE
sales@cumbrianstone.co.uk
Tel: 01768 867867
www.cumbrianstone.co.uk

Production Information

Fletcher Bank is a coarse-grained millstone grit from the Carboniferous period hailing from a quarry near Ramsbottom, Lancashire. Buff to grey in colour, Fletcher Bank is a popular option that has been used on projects across the UK.

Fletcher Bank Sandstone is cut and profiled for sale to domestic and commercial projects by:
Cumbrian Stone Ltd, Montal Place, Stalker Road, Gilwilly Industrial Estate, Penrith, CA11 9FE.

All stones are cut to order, and Fletcher Bank Sandstone is available within the following size limitations:

Maximum Length – 2500mm

Maximum Bed Height – 600mm

Minimum Thickness/Depth – 50mm

Please note that these limitations can vary depending on the unit sizes required. For all large units it is advisable to contact us to discuss the sizes achievable.

Fletcher Bank Sandstone is suitable for most masonry applications, including walling, paving, traditional cladding and architectural features.
Fletcher Bank Sandstone is **NOT** suitable for use as a thin cladding/kerf and rail system.

Technical Performance

Cumbrian Stone's Fletcher Bank Sandstone is independently tested in line with British and European Standards via an accredited laboratory. We also carry out in-house consistency testing on a monthly basis in order to assure our customers that our stone will perform as expected once installed.

A copy of our full technical performance data, including our in-house consistency testing, is available for inspection in our offices, and a digital copy of this can be provided on request on a project-by-project basis. Our technical team are also on hand to offer technical advice on the performance and limitations of all of the materials that we produce at Cumbrian Stone.

Please note that as natural stone is a natural product, there can be variations in the composition of the stone that can result in the real-world performance of the stone varying across the raw material. Any technical results provided are an average taken from the testing of multiple samples taken from several quarried blocks as a snapshot of the quarry at that time, and whilst we also carry out consistency checks in our own laboratory on a monthly basis it is not possible to guarantee the real-world performance of every individual stone due to these natural variations. We always advise that natural stone is a self-supporting material rather than a structural component, and Cumbrian Stone would always recommend consulting a structural engineer to establish the minimum required properties where natural stone is being used for structural purposes. We are happy to arrange additional accredited test results for any of our materials on a project-by-project basis (chargeable) should these be required for structural purposes.

Due to the natural variations within natural stone, the performance data that we are able to provide is not to be taken as a structural recommendation by Cumbrian Stone in any case.

Contact Information

For all enquiries relating to Fletcher Bank Sandstone or any of the other natural stones we supply, please contact us using the following details:

Cumbrian Stone Ltd
Montal Place
Stalker Road
Gilwilly Industrial Estate
Penrith
CA11 9FE

sales@cumbrianstone.co.uk Tel: 01768 867867
www.cumbrianstone.co.uk



Approved by Customer: _____