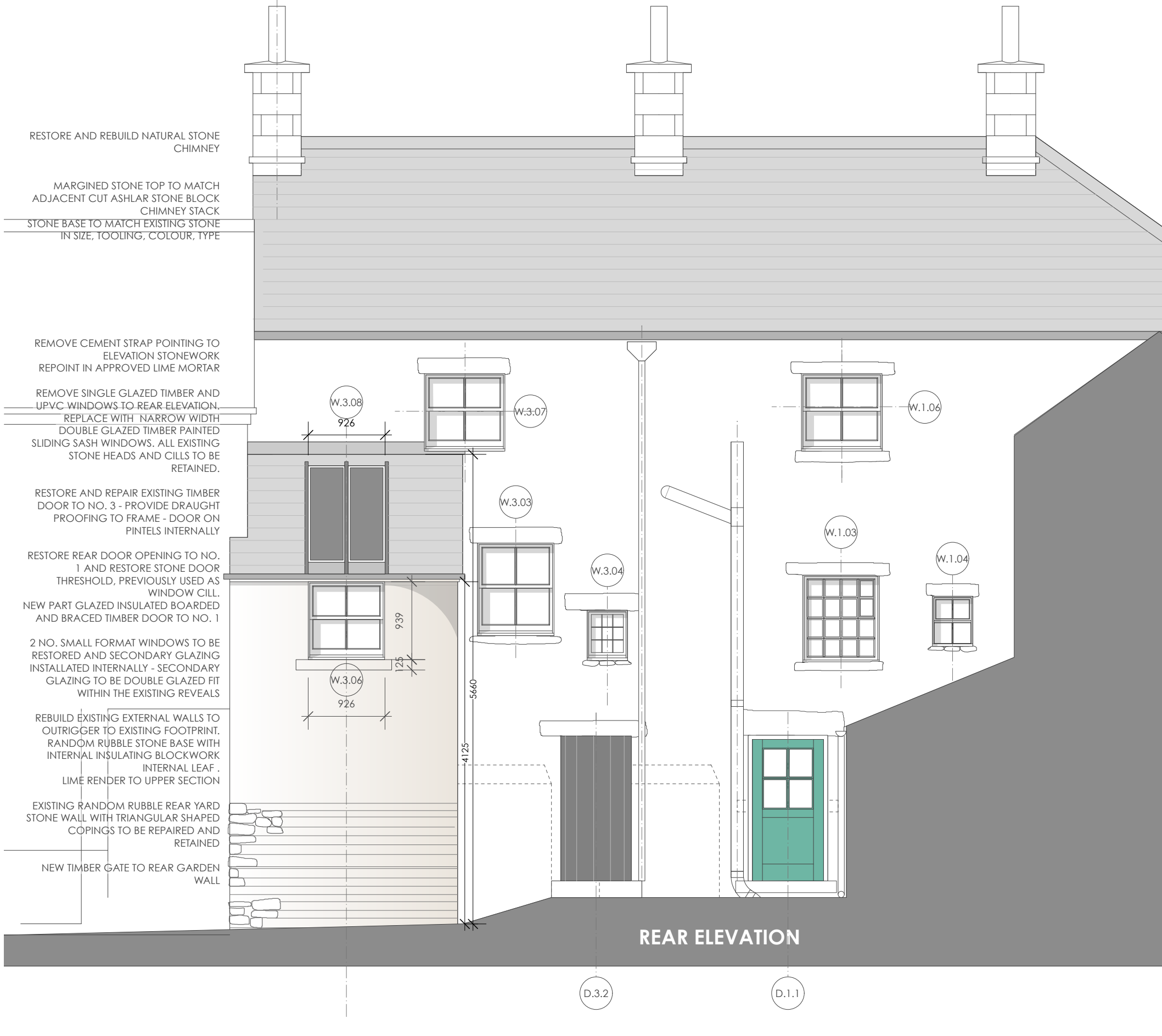
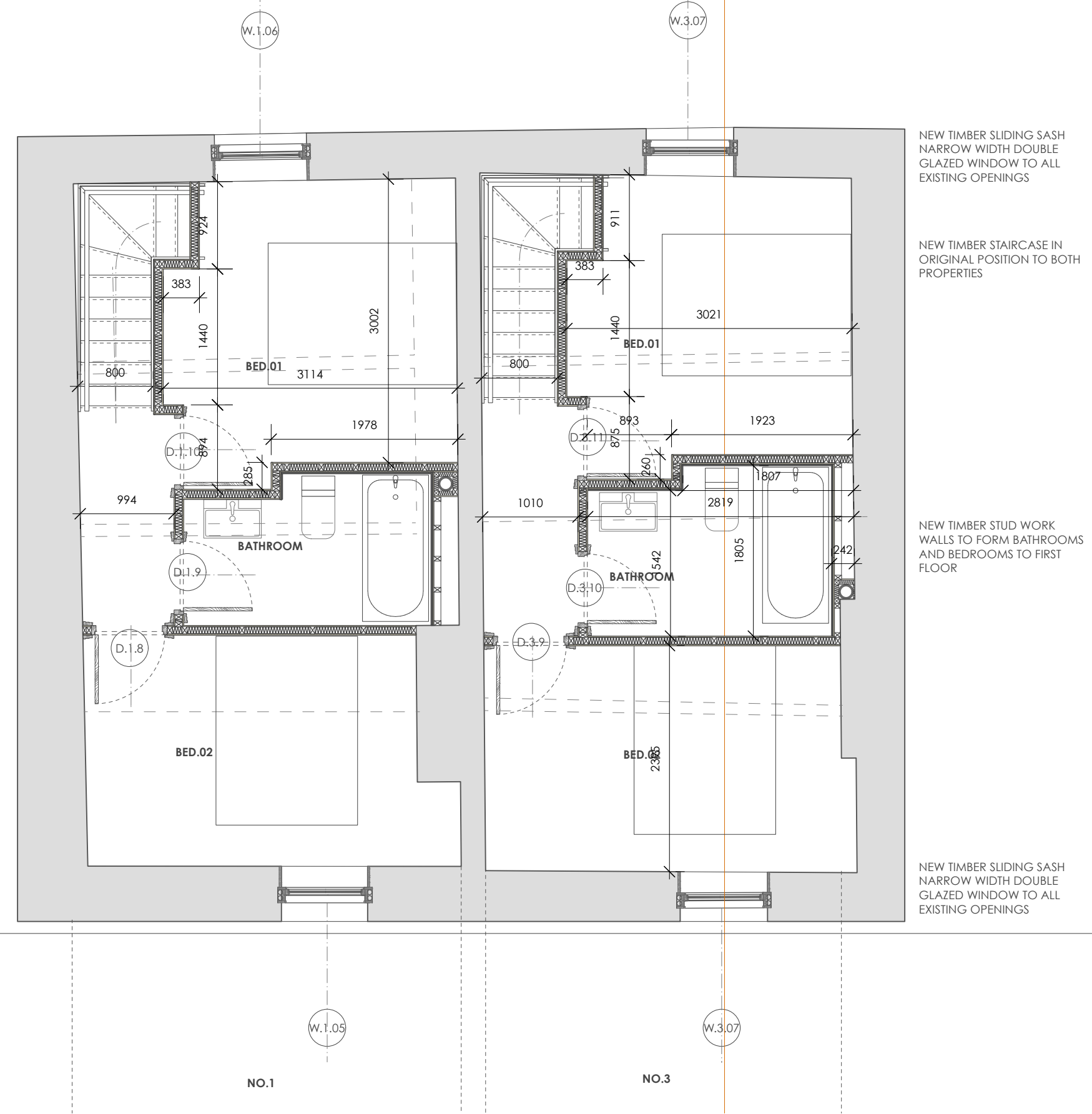
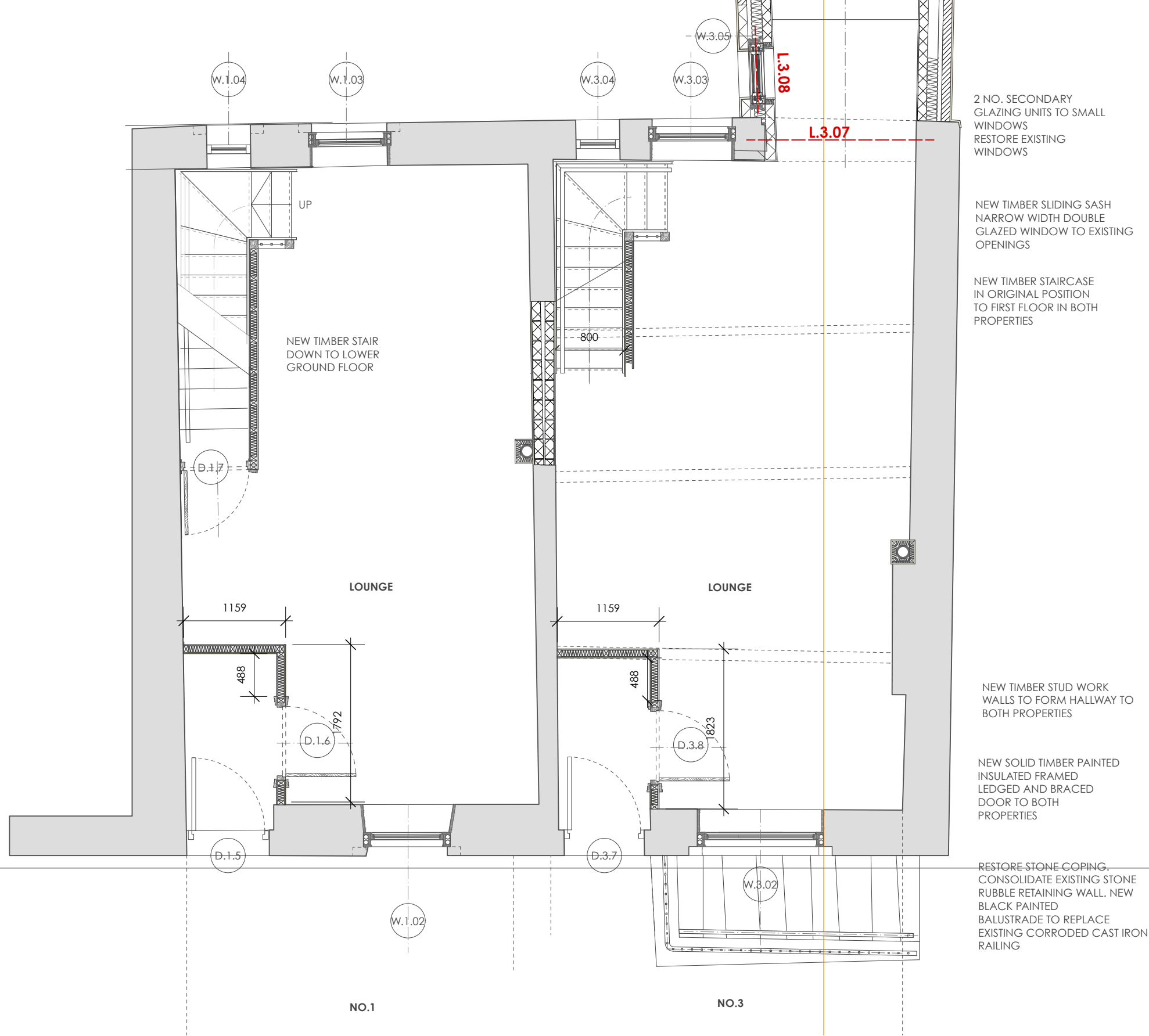
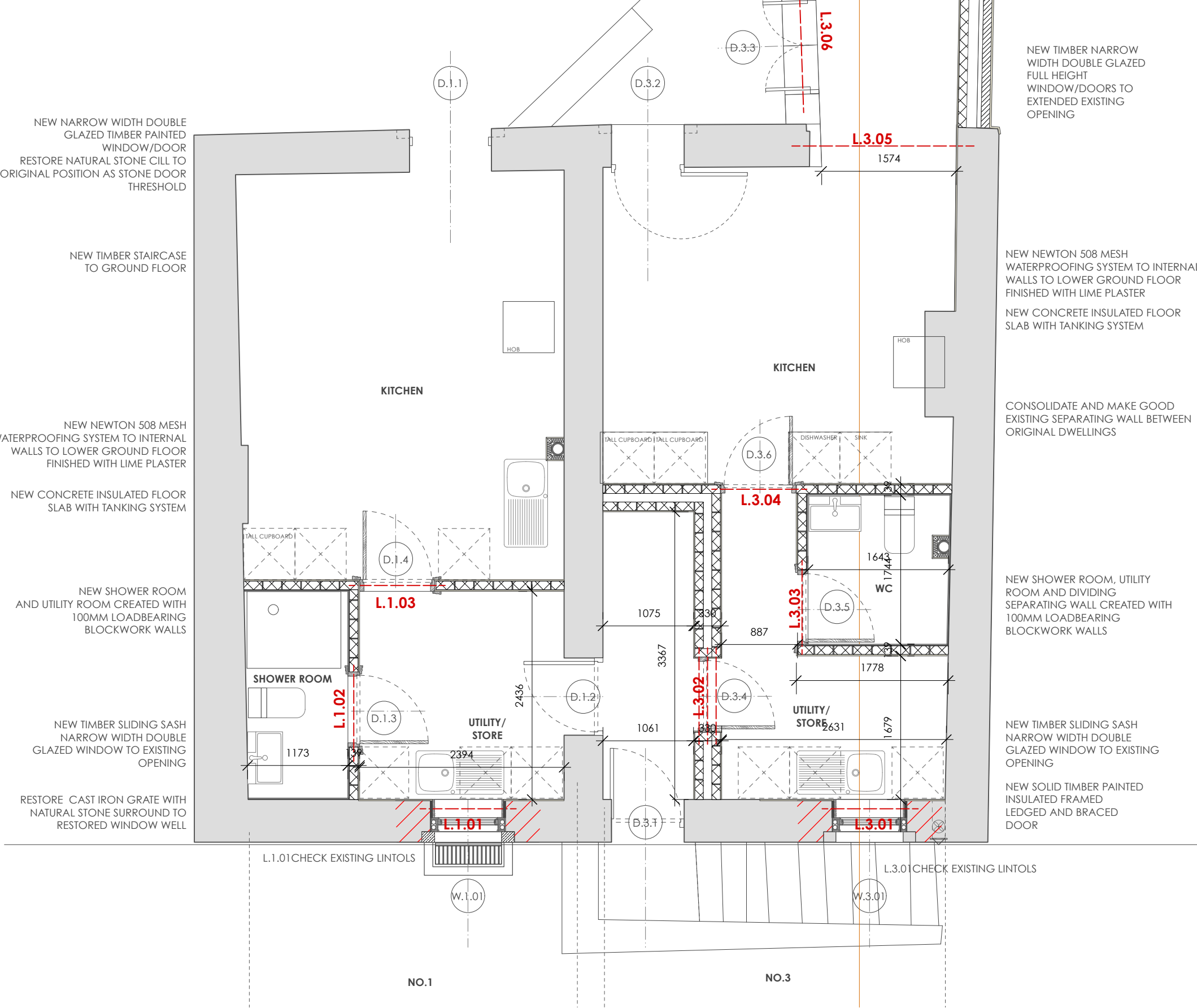


GENERAL PROJECT NOTES
RESTORATION OF NOS 1 AND 3 WINDY STREET TO CREATE TWO SEPARATE DWELLINGS WITH NEW BASMENT FLOOR CONSTRUCTION AND NEW INSULATED AND DRAINED GROUND FLOOR CONSTRUCTION TO NO. 3 ONLY. NEW WINDOWS AND DOORS THROUGHOUT AND THE RE-BUILDING OF THE REAR OUTRIGGER INCLUDING NEW INSULATED ROOF AND STONE PLINTH WITH RENDERED EXTERNAL FINISH.
NEW SEPARATE ELECTRICAL AND HEATING SYSTEMS WITH SPEARATE MAINS WATER SUPPLIES. INTRODUCTION OF BLOCKWORK SEPARATING WALLS TO THE BASEMENT LEVEL.

FOUNDATIONS
NEW LOAD BEARING WALLS TO THE NEW OUTRIGGER WITH CONCRETE FOUNDATIONS AND INTERNAL WALLS ON THICKENED CONCRETE SLAB SEE STRUCTURAL ENGINEER'S DETAILS.
WIDTHS AND DEPTHS OF FOUNDATIONS ARE DEPENDANT ON TYPE OF SUBSOIL AND GROUND STRATA AND SHOULD BE IN ACCORDANCE WITH APPROVED DOCUMENT A TABLE 12 AND BS8400:1986. DEPTH OF TRENCHES TO BE CONFIRMED BY THE STRUCTURAL ENGINEER OR LOCAL BUILDING CONTROL PRIOR TO LAYING THE CONCRETE.

PREPARATORY WORKS
EXISTING SERVICES WILL REQUIRE TEMPORARY DISCONNECTION TO ALLOW DEMOLITION WORKS. ALL EXISTING WATER, ELECTRICITY TO BE DISCONNECTED AND REROUTED TO ALLOW PROPOSED FINAL NEW POSITIONS AND LEFT SAFE FOR THE DURATION OF THE BUILDING WORKS.



RESTORE AND REBUILD NATURAL STONE CHIMNEY
MARGINED STONE TOP TO MATCH ADJACENT CUT ASHLAR STONE BLOCK CHIMNEY STACK
STONE BASE TO MATCH EXISTING STONE IN SIZE, TOOLING, COLOUR, TYPE

REMOVE CEMENT STRAP POINTING TO FRONT ELEVATION
REPOINT IN APPROVED LIME MORTAR

REMOVE ALL SINGLE GLAZED TIMBER PAINTED CASSETT WINDOWS AND BOW WINDOW TO GROUND FLOOR AND REPLACE WITH NARROW WIDTH DOUBLE GLAZED TIMBER PAINTED SLIDING SASH WINDOWS WITHIN EXISTING OPENINGS

NEW TIMBER PAINTED SOLID INSULATED FRAMED LEDGED AND BRACED DOORS TO GROUND FLOOR WITHIN EXISTING DOOR OPENINGS

NEW TIMBER PAINTED DOUBEL GLAZED SLIDING SASH WINDOWS TO EXISTING WINDOW OPENINGS TO LOWER GROUND FLOOR TO FRONT ELEVATION

REINSTATE AND RESTORE WINDOW WELL TO NO. 1 WINDY STREET WITH STONE THRESHOLD AROUND WINDOW WELL AND BLACK PAINTED GRILLE

REPAIR AND RESTORE EXISTING LOWER GROUND FLOOR DOOR IN HISTORIC POSITION, DRAUGHTPROOF TO SURROUNDING FRAME TO RETAIN DOOR
INSTALL NEW TIMBER PAINTED FRAMED LEDGED AND BRACED TIMBER DOORS INTERNALLY TO EACH DWELLING ENTRANCE

CONSOLIDATE EXISTING STONE RUBBLE RETAINING WALL TO MAKE SAFE, NEW BLACK PAINTED BALUSTRADE TO REPLACE EXISTING CORRODED CAST IRON RAILING WITH SCROLLED ENDS TO MATCH EXISTING AROUND VILLAGE

BLACK PAINTED METAL HAND RAIL DOWN TO CELLAR WITH SCROLLED ENDS FIXED BACK TO STONE WALL

Rev.	Date	Revision Notes
1	2406.04.02	Project Title 1 - 3 WINDY STREET CHIPPING Drawing Title GENERAL ARRANGEMENTS PLANS AND ELEVATIONS
Drawing No.	2406.04.02	Revision
Date	FEB 2025	Scale 1:50 @ A2
Drawn by :	JMC	Checked by :