

Drawing Numbering Key:
 1 2 3 4 5 6 7 8 9 10 11 12 13 14 15 16 17 18 19 20 21 22 23 24 25 26 27 28 29 30 31 32 33 34 35 36 37 38 39 40 41 42 43 44 45 46 47 48 49 50 51 52 53 54 55 56 57 58 59 60 61 62 63 64 65 66 67 68 69 70 71 72 73 74 75 76 77 78 79 80 81 82 83 84 85 86 87 88 89 90 91 92 93 94 95 96 97 98 99 100

This drawing is copyright and owned by the Architects and may not be reproduced or used unless accepted in writing.

DO NOT SCALE this drawing (printed or electronic versions). Principal Contractor and Contractors must check all dimensions from site. This drawing is to be read in conjunction with all relevant consultants' and specialists' drawings.

All BIM elements other than Architecture, have been imported from the relevant consultant's BIM model; reference should be made to the individual consultant's drawings for their specific elements of work.

Discrepancies and / or ambiguities within this drawing, between it and information given elsewhere, must be reported immediately to the Architects for clarification before proceeding.

All works are to be carried out in accordance with the latest CDM Safety Standards, Building Regulations, British Standards and industry regulatory codes of practice and guidance unless specifically directed otherwise.

The Principal Contractor and Contractors are to ensure all works are carried out in accordance with current manufacturers specific requirements.

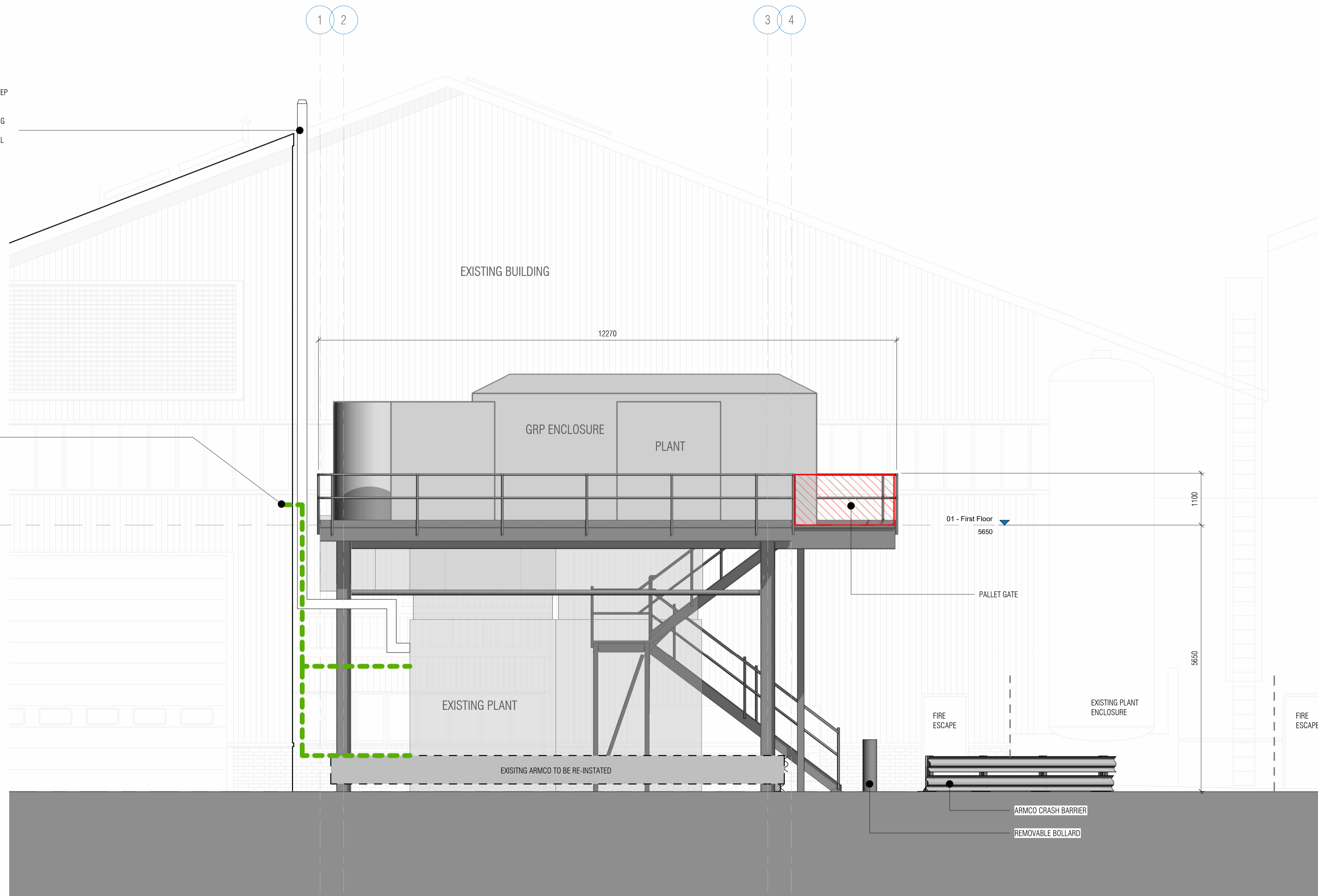
Responsibility for the reproduction of this drawing in paper form, or if issued in electronic format, lies with the recipient to check that all information has been replicated in full and is correct when compared to the original paper or electronic image. Graphical representations of coordinated equipment on this drawing are approximations only. Please refer to the Specifications and / or Details for actual sizes and / or specific contractor construction information.

This original document is issued for the purpose indicated below and contains information of confidential nature. Further copies and circulation will be strictly in accordance with the confidentiality agreement under the contract.

This Drawing Should be Printed in Colour

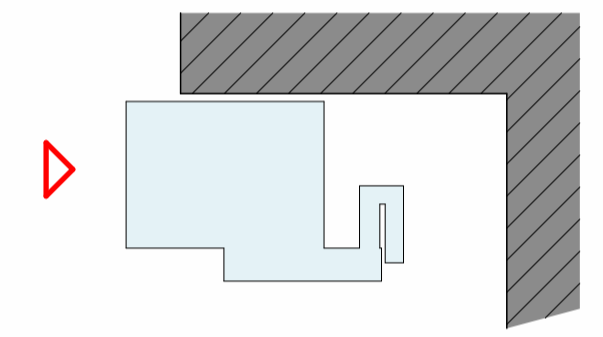
EXISTING AHU FLUES TO BE RE-ROUTED IN ACCORDANCE WITH MEP DRAWINGS TO HIGH LEVEL ABOVE EXISTING BUILDING RIDGE. STRUCTURAL SUPPORTS MAY BE REQUIRED TO BE PROVIDED BY CONTRACTOR. ANY PENETRATION THROUGH THE EXISTING BUILDING FABRIC TO BE MADE GOOD WITH FIRE RESISTANT AND WEATHERTIGHT SOLUTION TO THE SATISFACTION ON STRUCTURAL ENGINEER.

PIPEWORK PENETRATIONS THROUGH EXISTING BUILDING FACADE, IN ACCORDANCE WITH MEP ENGINEERS DRAWINGS. ALLOW FOR PROPRIETARY FIRE RESISTANT AND WEATHERTIGHT SERVICES COLLAR FOR ALL NEW PIPE PENETRATIONS



ALL ELEMENTS OF PLANT AND EQUIPMENT, INCLUDING GRP ENCLOSURE ARE INCLUDED ON THESE DRAWINGS FOR CONTEXT ONLY. REFER TO MEP ENGINEERS DRAWINGS AT ALL TIMES FOR ANY MEP RELATED ITEMS.

PLEASE REFER TO STRUCTURAL ENGINEERS DRAWINGS FOR FURTHER DETAIL AND CLARITY ON ALL STRUCTURAL ITEMS.



1 Proposed East Elevation (Planning)
 1:50

rev	description	date	drawn	checked
P01	Dimensions Aligned at Planners Request	11/06/2025	JA	LP

Revision Schedule

project: 7295

title: Proposed East Elevations General Arrangement (Planning)

project no:	scale:	drawn by:	checked by:	date:
7295	As indicated (A1)	OH	KC	11/06/2025

drawing no:	Status:	Rev:
OSC-WMA-XX-ZZ-DR-A-20-132	P01	P01