

Barn 1
Writtenstone Farm
Writtenstone Lane

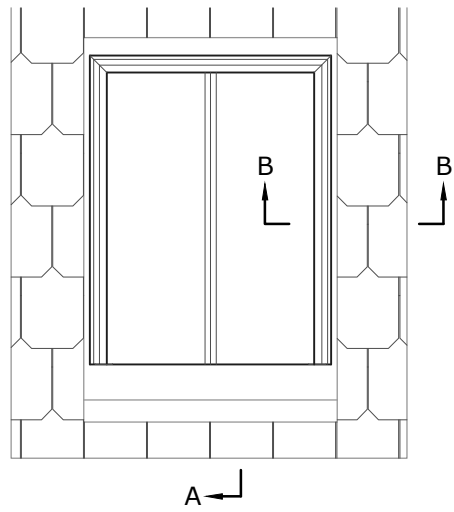


Roof Light Spec

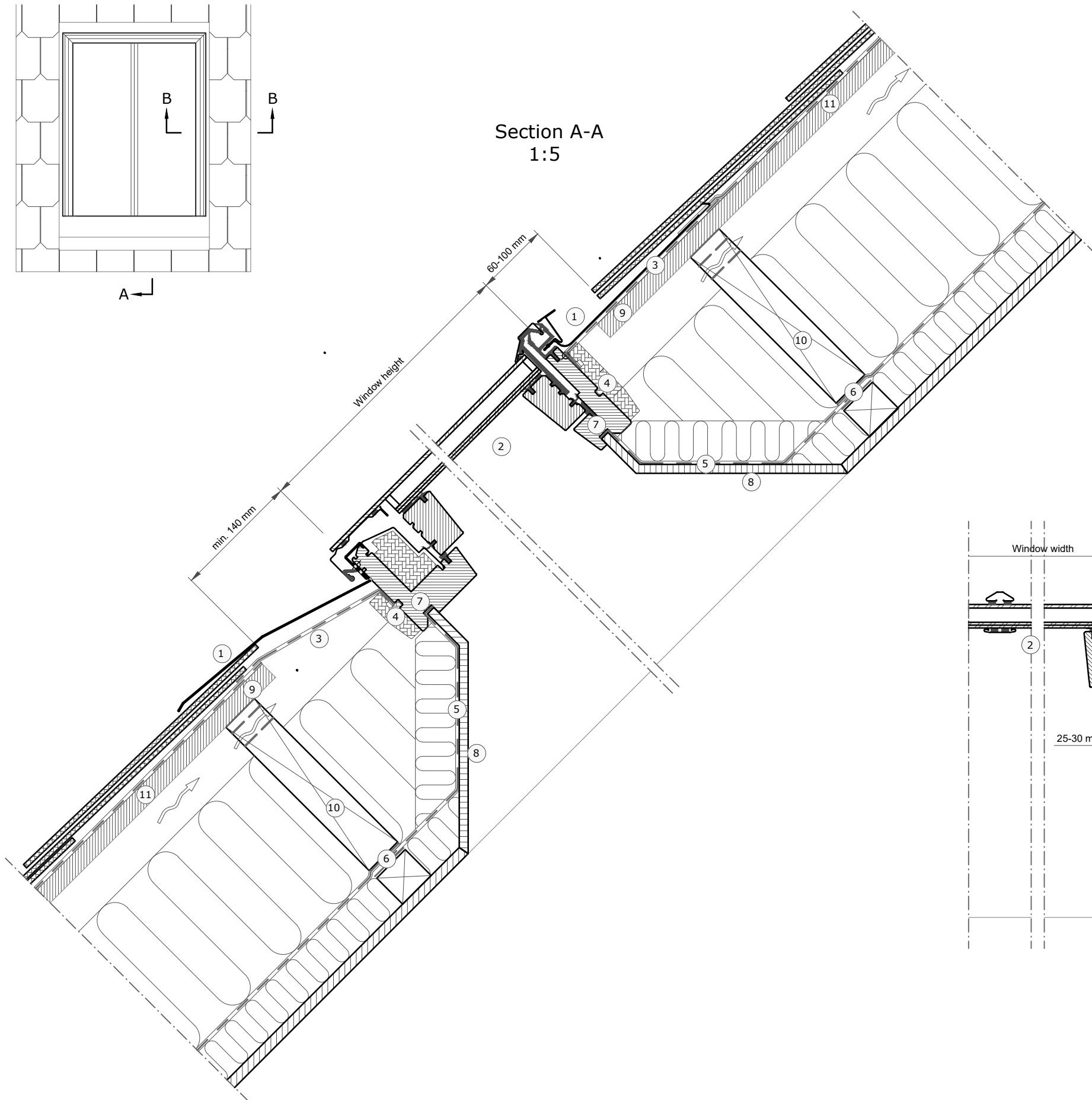
May 2025

Conservation roof windows are to be installed as previously approved and indicated on drawing 3428-004.

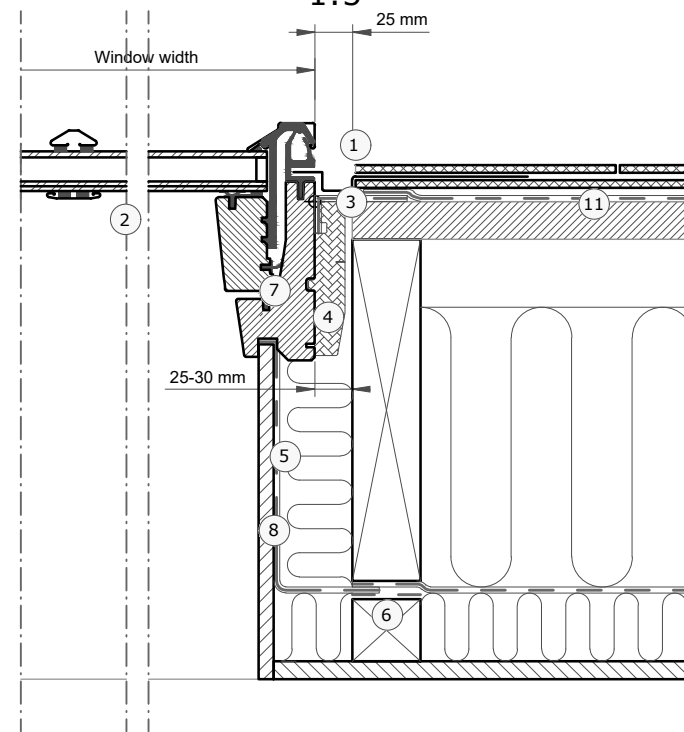
The windows to be installed are 'Velux GCL Top-hung Heritage conservation roof window, white-painted internal finish. External finish is black. To be installed in strict accordance with the manufacturers instructions.



Section A-A
1:5



Section B-B
1:5



- ① VELUX flashing (EDU 20°-65°)
- ② VELUX window (GCL 20°-65°)
- ③ VELUX underfelt collar (BFX)
- ④ VELUX insulation frame (Pre-installed on GCL)
- ⑤ VELUX vapour barrier (BBX)
- ⑥ VELUX vapour barrier tape (BBX)
- ⑦ Gasket on BBX in window rebate
- ⑧ Lining (non - VELUX)
- ⑨ Sarking board (Non VELUX)
- ⑩ Trimmer where necessary (Non VELUX)
- ⑪ Felt/breather membrane (Non VELUX)

Roof covering:

Slates
Max 2x8 mm

VELUX Products:

GCL
20°-65°

EDU
20°-65°

BFX

BBX

VELUX window sizes:

Size	Width (mm)	Size	Height (mm)
CC--	550	-K04	978
FC--	660	-K06	1178
MC--	780	-K08	1398
PC--	942	-K10	1600
SC--	1140		

© VELUX GROUP ® VELUX, VELUX logo are registered trademarks

VELUX

File name: GCL + EDU DRAFT2

Drawing no.:---

SCo: ---

Create date:
16.12.22

Rev. date:

Format:
A3

Scale:
1:5

