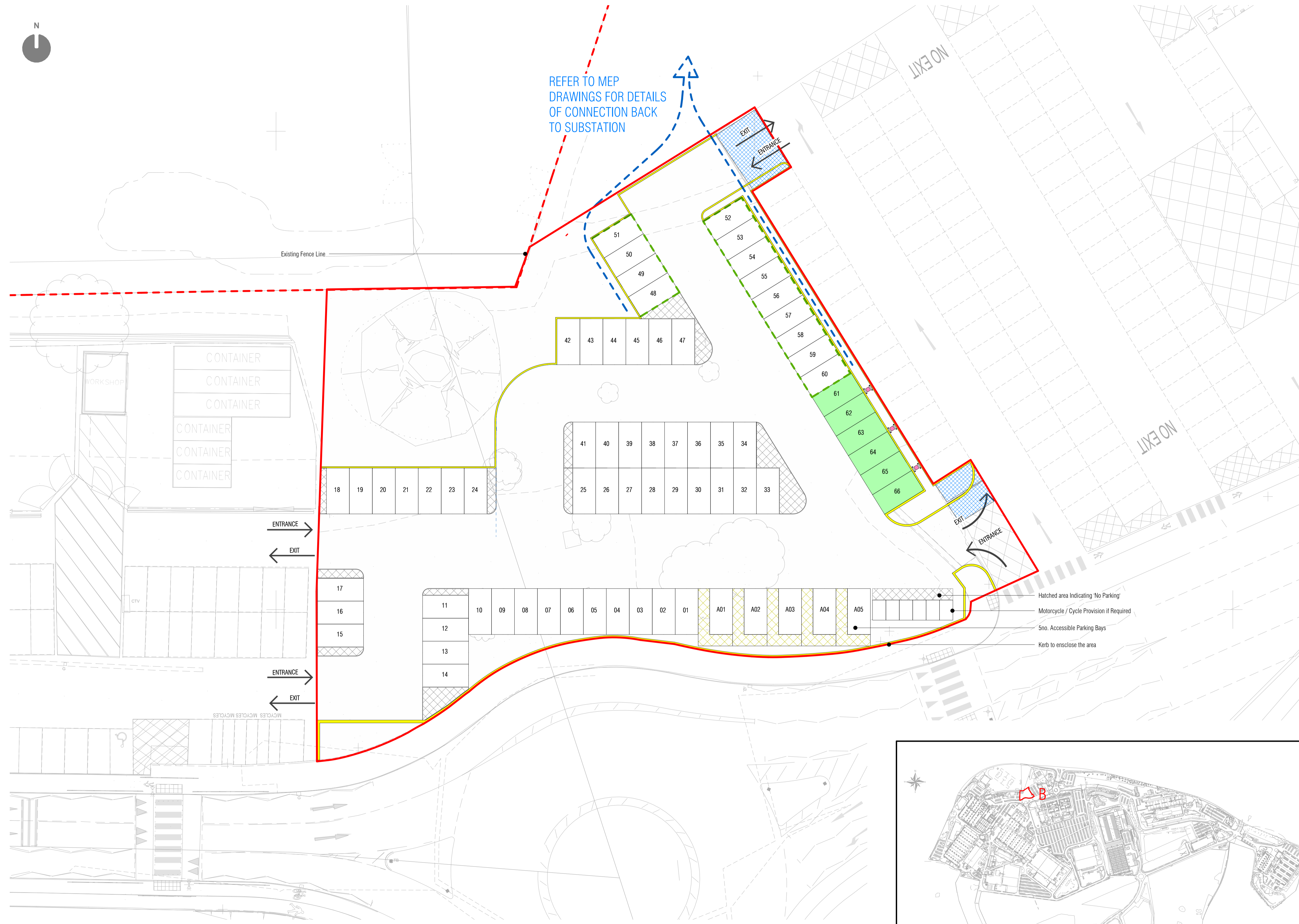




REFER TO MEP DRAWINGS FOR DETAILS OF CONNECTION BACK TO SUBSTATION



Drawing Numbering Key:

This drawing is copyright and owned by the Architects and may not be reproduced or used unless accepted in writing.

DO NOT SCALE this drawing (printed or electronic versions). Principal Contractor and Contractors must check all dimensions from site. This drawing is to be read in conjunction with all relevant consultants' and specialists' drawings.

All BIM elements other than Architecture, have been imported from the relevant consultants' BIM model; reference should be made to the individual consultants' drawings for their specific elements of work.

Discrepancies and / or ambiguities within this drawing, between it and information given elsewhere, must be reported immediately to the Architects for clarification before proceeding.

All works are to be carried out in accordance with the latest CDM Safety Standards, Building Regulations, British Standards and Industry regulatory codes of practice and guidance unless specifically directed otherwise.

The Principal Contractor and Contractors are to ensure all works are carried out in accordance with current manufacturers specific requirements.

Responsibility for the reproduction of this drawing in paper form, or if issued in electronic format, lies with the recipient to check that all information has been replicated in full and is correct when compared to the original paper or electronic image. Graphical representations of coordinated equipment on this drawing are approximations only. Please refer to the Specifications and / or Details for actual sizes and / or specific contractor construction information.

This original document is issued for the purpose indicated below and contains information of confidential nature. Further copies and circulation will be strictly in accordance with the confidentiality agreement under the contract.

This Drawing Should be Printed in Colour

- Note:
- An 'easement' zone has been allowed to replicate established site principles for the distance of construction works from site boundary.
 - Standard Parking bay size of 2400 x 4800 mm agreed with client.
 - EV Charging arrangement designed to match existing on site facilities.
 - Motorcycle bays drawn at 1400 x 2100 mm in accordance with 'The Institution of Structural Engineers: Car Park Design'
 - Herringbone arrangement has been explored, however, this delivered no betterment in car parking numbers or car park flow.
 - Possibility for accessible bays near the plant area of the new extension works has been explored, however, due to incorporation of the footpath, access and services in the area, this has not been feasible.
 - EV Charging is provided on the basis of 6 EV space plus 20% cable for future provision route installation, from AD part 'S'

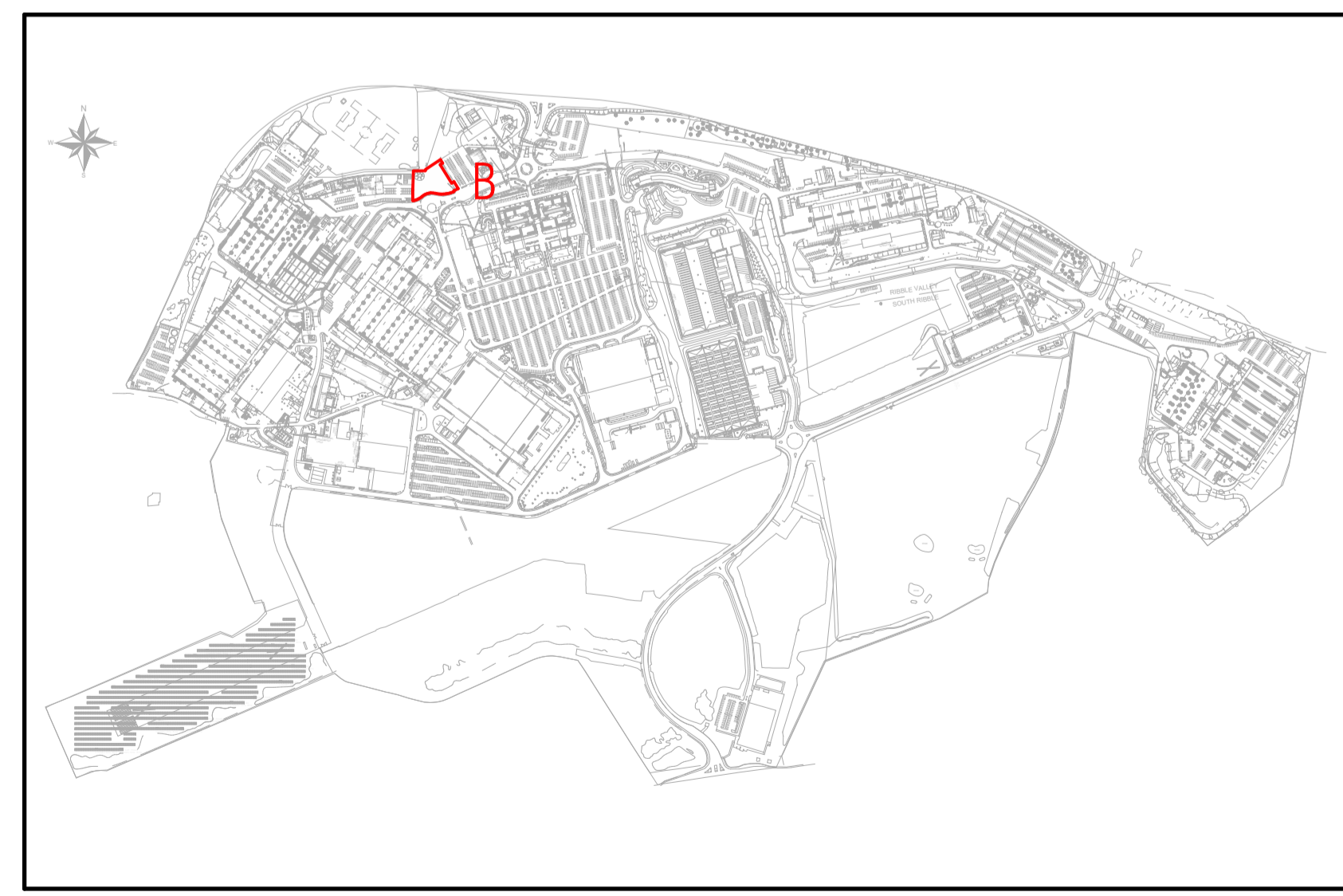
Parking Bay Schedule		
Parking Type	Size (mm)	Count
Accessible Parking Bay	6000 x 3600	5
EV Parking Bay	4800 x 2400	6
Motorcycle Parking Bay	2100 x 1400	6
Standard Parking Bay	4800 x 2400	60

- Key
- Ductwork installed for future services to EV charging bays (all to be provided from phase 1)
 - Spaces for potential future EV Provision
 - EV Charging Car Park Bay(s)
 - Car Park Bay(s)
 - Easement from site boundary
 - Accessible Parking Space
 - Painted hatched zone
 - Car Parking Bay lost due to new entrance (5 Spaces)
 - Kerbline
 - Site Boundary
 - EV Charger
 - Hoop Bollard

Rev	Description	Date	Drawn	Checked
P02	Red line Reverted Back to match Location plan	24/09/2025	JL	JP
P01	Reduced scheme issued to planning, Superseding Drawing OSE-WMA-XX-DR-A-00-014	22/09/2025	JL	JP

Project:	7295								
Title:	Proposed Car park Site Plan (Planning) - Reduced								
Project no:	7295	Scale:	As indicated	Drawn by:	JL	Checked by:	KC	Date:	24/09/2025
Drawing no:	OSE-WMA-XX-DR-A-00-020	Status:	D2	Rev:	P02				

1 Proposed Car Park Arrangement - Reduced
1 : 200



2 Location Plan (Proposed) 01 - Reduced
1 : 10000