

Window heights to be checked on site prior to fabrication of windows

Sill height to be checked prior to fabrication of windows

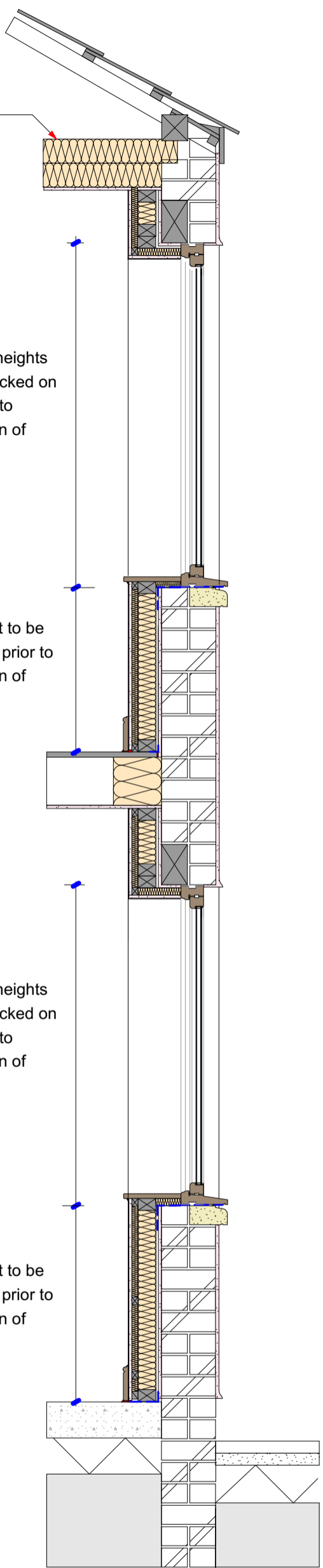
Window heights to be checked on site prior to fabrication of windows

Sill height to be checked prior to fabrication of windows

Internal wall insulation to external walls
Stud frame: Stud frame formed using 75x50mm treated timbers
Isolation of stud frame from concrete floors: Stud sole plate to be set on DPC to prevent moisture transfer between concrete floor and timber frame .
Perimeter edge sealing: DPC to be taped to plasterboard and to stud frame to all perimeter edges to limit unintended air movement behind stud frame.
Insulating stud frame: Stud is to be fully infilled with 75mm Thermafleece insulation ensuring tightly fit into all corners and to all perimeter edges.
Cross battens: Room face of stud to be fitted with 25x38mm treated timber battens laid crossways
Insulating cross battens: Gaps between battens filled with 25mm thick Thermafleece insulation ensuring tightly fit into all corners and to all perimeter edges.
Front face finish to partition: Room face of battens to be finished with 12.5mm foil backed plasterboard (Duplex), joints taped and skim coat applied.
Window sills: Timber window sills to be set on 25x38mm treated timber battens, all set on DPC, DPC tape sealed to window frame to limit unintended air movement. 25mm Thermafleece insulation to be fitted between battens ensuring tightly fit into all corners and to all perimeter edges.
Window jambs and heads: Window jambs and heads are to be insulated with 25mm Thermafleece insulation set between 25x38mm treated timber battens, all set on DPC, DPC tape sealed to window frame to limit unintended air movement. Room face lined with 12.5mm foil backed plasterboard, joints taped and finished with 3mm skim coat.
Junctions with internal walls: Insulated stud to be returned to internal walls at least 300mm
Insulating floor voids: Fully fill depth of floor void and full perimeter of stud wall with Thermafleece insulation to prevent cold bridging.

THIS DETAIL IS SUBJECT TO SEPARATE PLANNING AND LISTED BUILDING CONSENT BEFORE PROCEEDING WITH THESE WORKS VERIFY SPECIFIC APPROVAL ON PLANNING AND LISTED BUILDING CONSENT

Loft insulation upgraded using sheeps wool to required depth



Window heights to be checked on site prior to fabrication of windows

Sill height to be checked prior to fabrication of windows

Window heights to be checked on site prior to fabrication of windows

Sill height to be checked prior to fabrication of windows

SECTION THROUGH BEDROOM (REAR) North

SECTION THROUGH LIVINGROOM (FRONT)

Offices at:	Liverpool & Nottingham
Halsall Lloyd Partnership	
Address	98 Duke Street
Post Code	L1 5AG
Issuing Office	Liverpool
Tel	0151 708 8944
Website	www.hlpdesign.com

Drawing Title	INTERNAL WALL INSULATING DETAIL		
Project	Number 1-4, Almhouses, Stydd lane, Ribchester, PR3 3YQ		
Client	Your Housing Group		
Scales @ A3	First Issue Date	Drawn	Check
	05/06/24	BMc	GL
Job Number / Dwg. No. / Revision	RIBA Stage - Drawing Status		
3184_D_11_V01	[2] - PRELIMINARY		



Do not scale off this drawing. Do not rely on this drawing for purposes other than the recorded 'Status'. Constructors must be familiar with the client's building asbestos register ahead of facilitating any work contained on this drawing. This drawing is copyright of Halsall Lloyd Partnership & must not be reproduced unless specifically agreed in writing.