

WRITTEN STONE FARM, WRITTEN STONE LANE, LONGRIDGE, PRESTON, LANCASHIRE

Archaeological Building Recording



Clients: Clare Hargreaves-Norris
and Darren Norris

NGR: 362582 437860

© Greenlane Archaeology Ltd

November 2025



The Site	
Site Name	Written Stone Farm, Written Stone Lane, Longridge, Preston
County	Lancashire
NGR	362582 437860
Listing Status and number	Grade II listed farmhouse (1362273), close to Grade II listed 'Written Stone' (1147440)

Planning	
Planning application number	3/2025/0511 (for farmhouse)
Relevant condition number	5 (for farmhouse)
Level of recording required	3 for house, 2 for barn

Client	
Client Name	Clare Hargreaves-Norris and Darren Norris
Client's architect	Judith Douglas Town Planning Ltd
'As existing' drawings available?	Yes

Archiving	
Relevant Record Office(s)/Archive Centre(s)	Preston
Relevant HER	Lancashire

Staffing	
Desk-based assessment	Dan Elsworth and Tom Mace
Building recording	Dan Elsworth and Tom Mace
Report writing	Dan Elsworth and Tom Mace
Report editing	Dot Boughton
Illustrations	Tom Mace
Date on site work carried out	23-24/09/2025

Greenlane Archaeology Ltd,
Lower Brook Street, Ulverston, Cumbria, LA12 7EE

Tel: 01229 588 500
Email: info@greenlancearchaeology.co.uk
Web: www.greenlancearchaeology.co.uk

Contents

Illustrations.....	3
List of Figures.....	3
List of Plates.....	3
Non-Technical Summary.....	9
Acknowledgements.....	9
1. Introduction.....	10
1.1 Circumstances of the Project.....	10
1.2 Location, Geology, and Topography.....	10
2. Methodology.....	12
2.1 Introduction.....	12
2.2 Desk-Based Assessment.....	12
2.3 Building Recording.....	12
2.4 Archive.....	13
3. Desk-Based Assessment.....	14
3.1 Map and Image Regression.....	14
3.2 Site History.....	16
4. Building Recording.....	18
4.1 General Site Arrangement.....	18
4.2 Farmhouse – Arrangement and Fabric.....	18
4.3 Farmhouse – External Detail.....	18
4.4 Farmhouse – Internal Detail.....	23
4.5 Barn – Arrangement and Fabric.....	63
4.6 Barn – External Detail.....	63
4.7 Barn – Internal Detail.....	69
4.8 Outbuildings – Arrangement and Fabric.....	80
4.9 Outbuilding north of the barn – External Detail.....	80
4.10 Outbuilding north of the barn – Internal Detail.....	81
4.11 Outbuilding south-west of farmhouse.....	82
5. Discussion.....	84
5.1 Introduction.....	84
5.2 Phasing.....	84
5.3 Conclusion.....	85
6. Bibliography.....	88
6.1 Primary and Cartographic Sources.....	88
6.2 Secondary Sources.....	88
Appendix 1: Census information 1841-1911.....	90
Appendix 2: Listed Building Information Summary.....	92
Appendix 3: Photograph Record Index.....	93

Illustrations

List of Figures

Figure 1: Site location	11
Figure 2: External elevations of the farmhouse	59
Figure 3: Ground and first floor plans of the farmhouse	60
Figure 4: Attic floor plan of the farmhouse	61
Figure 5: Cross-section A-A1	62
Figure 6: Ground floor plan of the barn and outbuilding	76
Figure 7: North-west and south-east external elevations of the barn	77
Figure 8: South-west and north-east external elevations of the barn	78
Figure 9: External elevations of the outbuilding	79
Figure 10: Phase plan showing the development of the farmhouse	86
Figure 11: Phase plan showing the development of the barn	87
Figure 12: Ground and first floor plans of the farmhouse, showing the location and direction of photographs taken	99
Figure 13: Attic floor plan of the farmhouse and ground floor plans of the barn and outbuilding, showing the location and direction of photographs taken	100

List of Plates

Plate 1: Extract from the tithe map of 1837	14
Plate 2 (left): Extract from the Ordnance Survey map of 1847	15
Plate 3 (right): Extract from the Ordnance Survey map of 1895	15
Plate 4 (left): Extract from the Ordnance Survey map of 1912	15
Plate 5 (right): Extract from the Ordnance Survey map of 1932	15
Plate 6 (left): North-east external elevation of the farmhouse, viewed from the north	18
Plate 7 (right): North-west door on the north-east external elevation of the farmhouse, viewed from the north-east	18
Plate 8 (left): South-east door on the north-east external elevation of the farmhouse, viewed from the north-east	19
Plate 9 (right): Ground floor window to the south-east on the north-east external elevation of the farmhouse, viewed from the north-east	19
Plate 10: South-east side of the north-east external elevation of the farmhouse, viewed from the east	19
Plate 11 (left): South-west windows on the south-east external elevation of the farmhouse, viewed from the east	20
Plate 12 (right): North-east windows on the south-east external elevation of the farmhouse, viewed from south	20
Plate 13 (left): General view of the south-east external elevation of the farmhouse from the south-east	20
Plate 14 (right): Door in the south-east external elevation of the farmhouse, viewed from the south-east	20
Plate 15 (left): Datestone in the south-east external elevation of the farmhouse, viewed from the south-east	21
Plate 16 (right): Blind window in the south-east external elevation of the farmhouse, viewed from the south-east	21
Plate 17: Hopper, viewed from the south-east	21
Plate 18 (left): South-east end of the south-west external elevation of the farmhouse, viewed from the west	22
Plate 19 (right): Windows at the south-east end of the south-west external elevation of the farmhouse, viewed from the south-west	22

Plate 20 (left): Central windows on the south-west external elevation of the farmhouse, viewed from the south-west	22
Plate 21 (right): First floor window on the south-west external elevation of the farmhouse, viewed from the south-west.....	22
Plate 22 (left): North-west external elevation gable of the farmhouse, viewed from the north-west	23
Plate 23 (right): Return in the north-west external elevation of the farmhouse, viewed from the north-west.....	23
Plate 24 (left): Blocked feature to the north-east side of the north-west external elevation of the farmhouse, viewed from the north-west.....	23
Plate 25 (right): Blocked feature to the south-west side of the north-west external elevation of the farmhouse, viewed from the north-west.....	23
Plate 26 (left): Beams in G1 (farmhouse), viewed from the east.....	24
Plate 27 (right): Doors to the east in G1 (farmhouse), viewed from the west	24
Plate 28 (left): South-west elevation of G1 (farmhouse), viewed from the north-east.....	24
Plate 29 (right): Fireplace in G1 (farmhouse), viewed from the south-east.....	24
Plate 30 (left): Stairs in G2 (farmhouse), viewed from the north-west.....	25
Plate 31 (right): Door to the south-west in G2 (farmhouse), viewed from the north	25
Plate 32: Door to the north-east in G2 (farmhouse), viewed from the south-west	25
Plate 33 (left): South-east elevation of G3 (farmhouse), viewed from the north-west.....	26
Plate 34 (right): South-west elevation of G3 (farmhouse), viewed from the north	26
Plate 35 (left): North-east elevation of G3 (farmhouse), viewed from the south-west.....	26
Plate 36 (right): Detail of planks in the north-east elevation of G3 (farmhouse), viewed from the south-west	26
Plate 37: Loose door in G3 (farmhouse)	27
Plate 38 (left): Beams in G4 (farmhouse), viewed from the west	27
Plate 39 (right): North-east elevation of G4 (farmhouse), viewed from the south-west	27
Plate 40 (left): Window in the north-east elevation of G4 (farmhouse), viewed from the south-west	28
Plate 41 (right): South-east elevation of G4 (farmhouse), viewed from the north-west	28
Plate 42 (left): Door in the south-east elevation of G4 (farmhouse), viewed from the north-west	28
Plate 43 (right): Detail of planks in the south-west elevation of G4 (farmhouse), viewed from the north-east	28
Plate 44: North-west elevation of G4 (farmhouse), viewed from the south-east.....	29
Plate 45 (left): Floor in G5 (farmhouse), viewed from the south-east.....	29
Plate 46 (right): Stairs in G5 (farmhouse), viewed from the north-east.....	29
Plate 47 (left): Side of the stairs in G5 (farmhouse), viewed from the east.....	30
Plate 48 (right): Cupboard below the stairs in G5 (farmhouse), viewed from the north-east.....	30
Plate 49 (left): Butt in north-west wall of G5 (farmhouse), viewed from the east	30
Plate 50 (right): North-west elevation of G5 (farmhouse), viewed from the south-east	30
Plate 51 (left): Door to the north-east in G5 (farmhouse), viewed from the south-west.....	31
Plate 52 (right): Door to the south-east in G5 (farmhouse), viewed from the north-west.....	31
Plate 53: Door to the south-west in G5 (farmhouse), viewed from the north-east	31
Plate 54 (left): Floor in G6 (farmhouse), viewed from the north	32
Plate 55 (right): Beams in G6 (farmhouse), viewed from the north	32
Plate 56 (left): Door to the north-east in G6 (farmhouse), viewed from the south-west.....	32

Plate 57 (right): Window to the south-east in G6 (farmhouse), viewed from the north	32
Plate 58 (left): South-west elevation of G6 (farmhouse), viewed from the north-east.....	33
Plate 59 (right): Fireplace in G6 (farmhouse), viewed from the north-east	33
Plate 60 (left): Floor in G7 (farmhouse), viewed from the south.....	33
Plate 61 (right): Beams in G7 (farmhouse), viewed from the west.....	33
Plate 62 (left): Beams in G7 (farmhouse), viewed from the south-west.....	34
Plate 63 (right): North-west elevation of G7 (farmhouse), viewed from the south-east	34
Plate 64 (left): North-east elevation of G7 (farmhouse), viewed from the south-west.....	34
Plate 65 (right): Cupboard in the north-east elevation of G7 (farmhouse), viewed from the south-west	34
Plate 66: Hinge on the cupboard in G7 (farmhouse), viewed from the south-west.....	35
Plate 67 (left): Window in the south-east elevation of G7 (farmhouse), viewed from the north-west	35
Plate 68 (right): South-west elevation door, G7 (farmhouse), viewed from the north-east	35
Plate 69 (left): Doors to the east in F1 (farmhouse), viewed from the west	36
Plate 70 (right): Door to the south-east in F1 (farmhouse), viewed from the north-west	36
Plate 71 (left): Window to the south-west in F1 (farmhouse), viewed from the north-east.....	36
Plate 72 (right): North-west elevation of F1 (farmhouse), viewed from the south-east.....	36
Plate 73: Fireplace in F1 (farmhouse), viewed from the south-east.....	37
Plate 74 (left): Floor in F2 (farmhouse), viewed from the south	37
Plate 75 (right): Newel and handrail in F2 (farmhouse), viewed from the west.....	37
Plate 76 (left): Infilled hole in the floor to the north-east in F2 (farmhouse), viewed from the south-west	38
Plate 77 (right): Stairs in F2 (farmhouse), viewed from the south-west	38
Plate 78 (left): North-east window in in F2 (farmhouse), viewed from the south-west.....	38
Plate 79 (right): Opening to the south-east in F2 (farmhouse), viewed from the west.....	38
Plate 80 (left): Alcove to the south-east in G2 (farmhouse), viewed from the north-west.....	39
Plate 81 (right): Door to the south-west in F2 (farmhouse), viewed from the north	39
Plate 82: North-west elevation of F2 (farmhouse), viewed from the south-east	39
Plate 83 (left): Window to the north-east in F3 (farmhouse), viewed from the south-west.....	40
Plate 84 (right): Door to the north-east in F3 (farmhouse), viewed from the south-west	40
Plate 85 (left): Window to the south-west in F3 (farmhouse), viewed from the north-east.....	40
Plate 86 (right): North-west elevation in F3 (farmhouse), viewed from the east	40
Plate 87 (left): Door to the south-east in F4 (farmhouse), viewed from the north-west.....	41
Plate 88 (right): Door hinge on the door to the south-east in F4 (farmhouse), viewed from the north-west	41
Plate 89 (left): Doors to the south-west in F4 (farmhouse), viewed from the north.....	41
Plate 90 (right): Door to the north-west in F4 (farmhouse), viewed from the south-east	41
Plate 91: Window to the south-east in F5 (farmhouse), viewed from the north-east	42
Plate 92 (left): Window to the north-east in F6 (farmhouse), viewed from the south-east	43
Plate 93 (right): South-east elevation of F6 (farmhouse), viewed from the north-west.....	43
Plate 94 (left): Cupboard in F6 (farmhouse), viewed from the north-west	43
Plate 95 (right): Fireplace in F6 (farmhouse), viewed from the north-west	43
Plate 96 (left): Door in the south-east elevation of F6 (farmhouse), viewed from the north-west.....	44

Plate 97 (right): North-west and south-west elevations of F6 (farmhouse), viewed from the east..... 44

Plate 98 (left): Floor in F7 (farmhouse), viewed from the north-east..... 45

Plate 99 (right): Under the attic stairs in F7 (farmhouse), viewed from the north-east..... 45

Plate 100 (left): North-east door in F7 (farmhouse), viewed from the south-west..... 45

Plate 101 (right): South-east door in F7 (farmhouse), viewed from the north-west 45

Plate 102 (left): Stairs in F7 (farmhouse), viewed from the east 46

Plate 103 (right): South-west door to the stairs in F7 (farmhouse), viewed from the north-east..... 46

Plate 104 (left): South-west door to the north-west in F7 (farmhouse), viewed from the south-east 46

Plate 105 (right): Door hinge on the south-west door to the north-west in F7 (farmhouse), viewed from the south-east 46

Plate 106: North-east door to the north-west in F7 (farmhouse), viewed from the south-east 47

Plate 107 (left): Floor in F8 (farmhouse), viewed from the north-east..... 47

Plate 108 (right): Floor in F8 (farmhouse), viewed from the north..... 47

Plate 109 (left): North-east end of F8 (farmhouse), viewed from the south-west..... 48

Plate 110 (right): South-east window in F8 (farmhouse), viewed from the north-west..... 48

Plate 111 (left): South-west elevation of F8 (farmhouse), viewed from the north-east 48

Plate 112 (right): Fireplace in F8 (farmhouse), viewed from the north-east..... 48

Plate 113 (left): Door in the north-west elevation of F8 (farmhouse), viewed from the south-east 49

Plate 114 (right): Door hinge on the door in the north-west elevation of F8 (farmhouse), viewed from the south-east 49

Plate 115 (left): Floor in F9 (farmhouse), viewed from the south 49

Plate 116 (right): Beams in F9 (farmhouse), viewed from the north..... 49

Plate 117 (left): North-east elevation of F9 (farmhouse), viewed from the south-west 50

Plate 118 (right): Window in the south-east elevation of F9 (farmhouse), viewed from the north-west..... 50

Plate 119 (left): South-west and north-west elevations of F9 (farmhouse), viewed from the east 50

Plate 120 (right): Door in the south-west elevation of F9 (farmhouse), viewed from the north-east..... 50

Plate 121: Door hinge on the door in the south-west elevation in F9 (farmhouse), viewed from the north-east 51

Plate 122 (left): Purlins to the south-west in A1 (farmhouse), viewed from the south-east 51

Plate 123 (right): Purlins to the north-east in A1 (farmhouse), viewed from the south-west..... 51

Plate 124 (left): North-west elevation of A1 (farmhouse), viewed from the south-east..... 52

Plate 125 (right): South-east elevation of A1 (farmhouse), viewed from the north-west..... 52

Plate 126 (left): North-west elevation of A2 (farmhouse), viewed from the south-east..... 52

Plate 127 (right): North-west elevation of A2 (farmhouse), viewed from the south-east..... 52

Plate 128 (left): Purlins to the north-east in A2 (farmhouse), viewed from the south-west 53

Plate 129 (right): South-east elevation of A2 (farmhouse), viewed from the north-west..... 53

Plate 130 (left): Floor in A3 (farmhouse), viewed from the south-west 53

Plate 131 (right): Floor in A3 (farmhouse), viewed from the west 53

Plate 132 (left): Reused purlin in A3 (farmhouse), viewed from the north-west..... 54

Plate 133 (right): Purlins to the south-east side of A3 (farmhouse), viewed from the west 54

Plate 134 (left): Purlins to the south-east side of A3 (farmhouse), viewed from the west..... 54

Plate 135 (right): Purlins to the south-east side of A3 (farmhouse), viewed from the north.....	54
Plate 136 (left): South-west truss in A3 (farmhouse), viewed from the north-east.....	54
Plate 137 (right): South-east end of the south-west truss in A3 (farmhouse), viewed from the south-west	54
Plate 138: Top of the north-east truss in A3 (farmhouse), viewed from the south-west	55
Plate 139 (left): North-west end of the south-west truss in A3 (farmhouse), viewed from the south	55
Plate 140 (right): South-east end of the north-east truss in A3 (farmhouse), viewed from the south-west.....	55
Plate 141 (left): North-east truss in A3 (farmhouse), viewed from the south-west.....	55
Plate 142 (right): South-east end of the north-east truss in A3 (farmhouse), viewed from the north-east.....	55
Plate 143 (left): North-west end of the north-east truss in A3 (farmhouse), viewed from the south-west.....	56
Plate 144 (right): South-east end of the north-east truss in A3 (farmhouse), viewed from the south-west.....	56
Plate 145 (left): Top of the north-east truss in A3 (farmhouse), viewed from the south-west.....	56
Plate 146 (right): Reused purlin on the north-east truss in A3 (farmhouse), viewed from the south	56
Plate 147 (left): North-east elevation of A3 (farmhouse), viewed from the south-west.....	57
Plate 148 (right): South-west elevation of A3 (farmhouse), viewed from the north-east.....	57
Plate 149 (left): Windows to the south-west in A3 (farmhouse), viewed from the north-east	57
Plate 150 (right): Stairs in A3 (farmhouse), viewed from the east.....	57
Plate 151 (left): Chimney in the north-west elevation of A3 (farmhouse), viewed from the south-east	58
Plate 152 (right): Roofline in the north-west elevation of A3 (farmhouse), viewed from the south-east	58
Plate 153 (left): North-east external elevation of the barn, viewed from the north	63
Plate 154 (right): Window in the north-east external elevation of the barn, viewed from the north-east.....	63
Plate 155 (left): North-west side of the north-east external elevation of the barn, viewed from the north-east	64
Plate 156 (right): Infill in the north-east external elevation of the barn, viewed from the north-east	64
Plate 157: Blocked window in the north-east external elevation of the barn, viewed from the north-east.....	64
Plate 158 (left): North-west gable of the north-west external elevation of the barn, viewed from the north.....	65
Plate 159 (right): North-west gable of the north-west external elevation of the barn, viewed from the west	65
Plate 160: Main part of the north-west external elevation of the barn, viewed from the north-west	65
Plate 161 (left): General view of the south-west external elevation of the barn from the south-west	66
Plate 162 (right): North-west end of the south-west external elevation of the barn, viewed from the south-west	66
Plate 163: Centre of the south-west external elevation of the barn, viewed from the south-west	66
Plate 164 (left): Ribbed stone in the south-west external elevation of the barn, viewed from the south-west.....	67
Plate 165 (right): Grooved stone in the south-west external elevation of the barn, viewed from the south-west	67
Plate 166: South-east end of the south-west external elevation of the barn, viewed from the south-west.....	67
Plate 167 (left): North-west door in the south-east end of the south-west external elevation of the barn, viewed from the south-west.....	68
Plate 168 (right): South-east door in the south-east end of the south-west external elevation of the barn, viewed from the south-west	68
Plate 169 (left): General view of the south-east external elevation of the barn, viewed from the south-east	69
Plate 170 (right): Centre window in the south-east external elevation of the barn, viewed from the south-east	69
Plate 171: North-east window in the south-east external elevation of the barn, viewed from the south-east.....	69
Plate 172 (left): Floor in G1 (barn), viewed from the south-west.....	70

Plate 173 (right): Truss in G1 (barn), viewed from the east	70
Plate 174 (left): Truss in G1 (barn), viewed from the west	70
Plate 175 (right): North-east elevation of G1 (barn), viewed from the south-west	70
Plate 176 (left): South-east elevation of G1 (barn), viewed from the north-west	71
Plate 177 (right): South-west elevation of G1 (barn), viewed from the north-east	71
Plate 178 (left): North-west elevation of G1 (barn), viewed from the south-east	71
Plate 179 (right): Reused stone in the north-west elevation of G1 (barn), viewed from the south-east.....	71
Plate 180 (left): Floor in G2 (barn), viewed from the south-west.....	72
Plate 181 (right): Roof in G2 (barn), viewed from the south-west	72
Plate 182 (left): North-east elevation of G2 (barn), viewed from the south-west	72
Plate 183 (right): North-west elevation of G2 (barn), viewed from the south-east	72
Plate 184 (left): Floor in G3 (barn), viewed from the south-west.....	73
Plate 185 (right): Stairs in G3 (barn), viewed from the west.....	73
Plate 186 (left): Ceiling in G3 (barn), viewed from the east.....	73
Plate 187 (right): Through passage to the north-west in G3 (barn), viewed from the north-east.....	73
Plate 188 (left): North-east elevation of G3 (barn), viewed from the south-west	74
Plate 189 (right): South-east elevation windows in G3 (barn), viewed from the north-west.....	74
Plate 190 (left): North-east window in the south-east elevation of the barn (G3), viewed from the west.....	74
Plate 191 (right): South-east elevation alcoves in G3 (barn), viewed from the west.....	74
Plate 192 (left): Floor in F1 (barn), viewed from the east	75
Plate 193 (right): Truss in F1 (barn), viewed from the east.....	75
Plate 194 (left): South-west side of F1 (barn), viewed from the north-east.....	75
Plate 195 (right): South-east side of F1 (barn), viewed from the north	75
Plate 196: East external elevation of the outbuilding, viewed from the east.....	80
Plate 197: North external elevation of the outbuilding, viewed from the north	80
Plate 198 (left): West external elevation of the outbuilding, viewed from the west	81
Plate 199 (right): West external elevation of the outbuilding, viewed from the west.....	81
Plate 200 (left): South external elevation of the outbuilding, viewed from the south.....	81
Plate 201 (right): South external elevation of the outbuilding, viewed from the south-east	81
Plate 202: South room of the outbuilding, viewed from the west	82
Plate 203 (left): North side of the north room of the outbuilding, viewed from the west.....	82
Plate 204 (right): Alcove to the west side of the north room of the outbuilding, viewed from the south-east.....	82
Plate 205 (left): General view of the outbuilding from the north-west.....	83
Plate 206 (right): General view of the outbuilding from the north	83
Plate 207: The south-east elevation of the outbuilding, viewed from the south-east.....	83

Non-Technical Summary

Following the submission of a planning application for internal alterations to the farmhouse of Written Stone Farm, Written Stone Lane, Longridge, Lancashire, and prior to the submission of an application to convert a detached 'barn' for residential use, Greenlane Archaeology was commissioned to carry out an archaeological building recording. This took place in September 2025, and followed on from a previous programme of archaeological recording of a larger barn and two outbuildings at the site earlier in the same year.

The farmhouse is a Grade II Listed Building, as is the nearby Written Stone, from which the site takes its name. The so named "Written Stone" comprises a large piece of stone inscribed by Ralph Ratcliffe in 1655. The house of the same name is dated to 1784 but clearly contains earlier fabric, as do other buildings within the complex. The origins of the site are uncertain but it appears to have been occupied by the early 17th century and belonged to the Ratcliffe family. The Written Stone is connected to a range of legends, largely relating to bad fortune afflicting one resident who tried to move it. The current house was probably constructed by the Bourn family in 1784 and they remained at the site into the 19th century, by which time it was operating as a farm. The map evidence shows that the house and barn had certainly been constructed by the early 19th century and went through a number of alterations following that.

Despite the presence of elements of likely 17th century date within the house, the building recording revealed that the earliest element of it was the rear section, which originally comprised a double-pile plan house of probable 18th century date, which incorporated some re-used earlier fabric. An impressive symmetrical façade of two storeys was added to the south-east side of the original structure and the roof of this rose to meet it. This has a date stone and dated hopper of 1784 and was probably constructed by the Bourn family. Later alterations to the house were less extensive, but the census returns suggest that it was divided into at least two dwellings by the early 19th century and it seems likely that the rear staircase was added at that time. The main part of the 'barn' was also constructed during this period, and was probably originally a stable or for housing cattle, with stalls on the ground floor and a hayloft above. Later alterations to the farmhouse are less apparent, and largely related to the removal of original fireplaces, and the sub-division of part of the first floor to form a separate toilet and bathroom. The barn was also extended, with additional space probably for vehicles or machinery, which was modified at least once.

While the site has an interesting history connected to the Written Stone and the Ratcliffe family, it is apparent that whatever structure was present during the 17th century was completely demolished although elements of it were likely incorporated into the current buildings. The earliest element of the house represents an interesting double-pile dwelling, a form that is evidently earlier than generally accepted, and the changes to the site after that represent its change from a gentry farmhouse of some architectural pretence to a more standard working farm.

Acknowledgements

Greenlane Archaeology would like to thank Clare Hargreaves-Norris and Darren Norris for commissioning the project and providing information about the site. Further thanks are due to Judith Douglas for her assistance with the project.

1. Introduction

1.1 Circumstances of the Project

1.1.1 The circumstances of the project are set out in the tables on the inside cover of this report.

1.1.2 The project follows on from an earlier recording carried out of larger barn to the south-west of the farmhouse and two outbuildings (Outbuilding 1 and Outbuilding 2) to the south and south-west of this (Greenlane Archaeology 2025).

1.2 Location, Geology, and Topography

1.2.1 Written Stone Farm is located in the Ribble Valley area, c1.7km east of Longridge and c10km north-east of Preston, (Figure 1; Ordnance Survey 2008). It lies c125m above sea level.

1.2.2 The area is within the Lancashire Valleys character area. The surrounding area is characterised by an undulating landscape, with scattered settlements on valley sides comprised of old stone buildings (Countryside Commission 1998, 103). Small woodlands are limited and the land principally comprises pastureland, enclosed by hedgerows, stone walls on the higher ground, and post and wire fences (Countryside Commission 1998, 101). The underlying geology of the valleys comprises Coal Measures overlain by glacial deposits of mostly till (Countryside Commission 1998, 102).

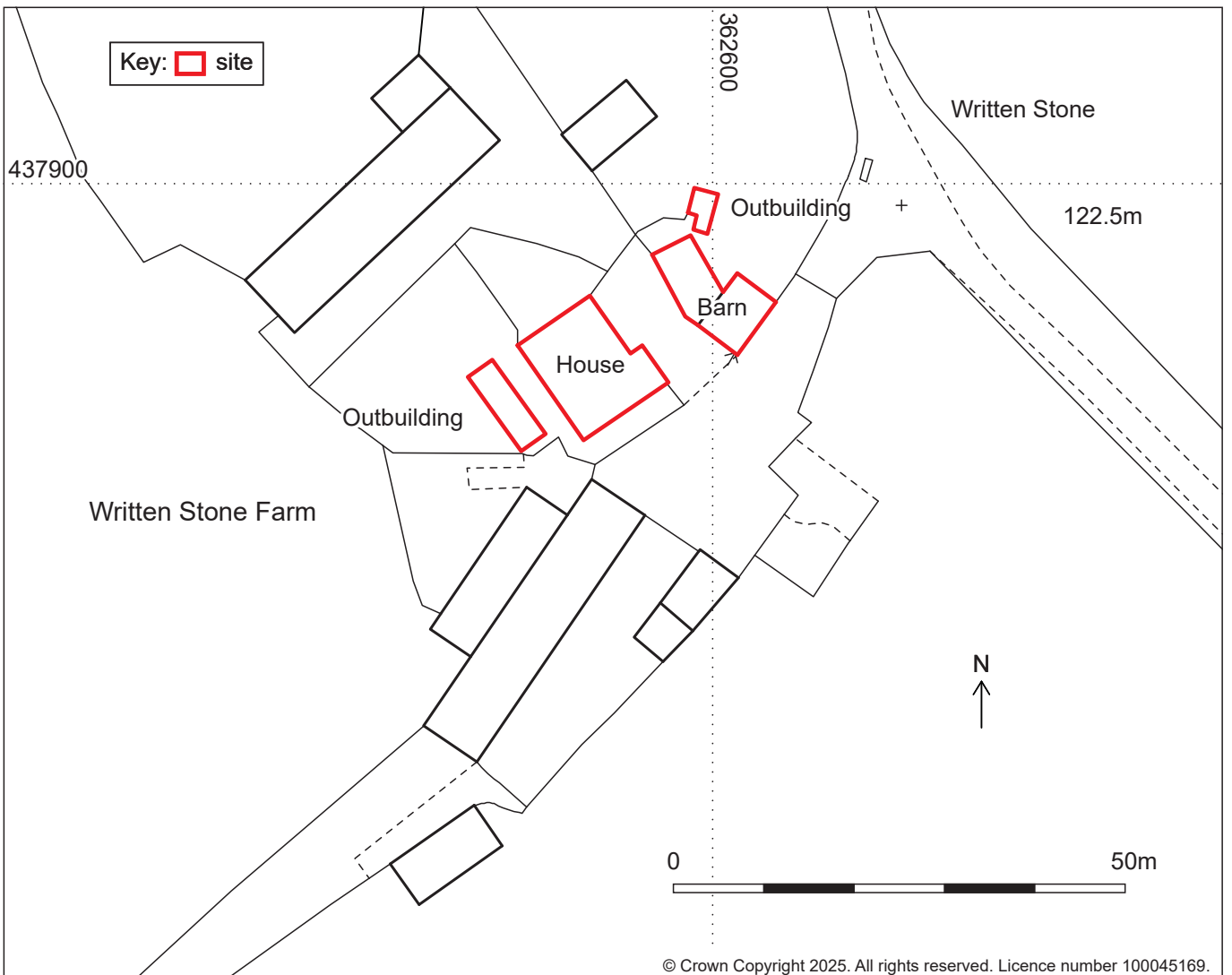
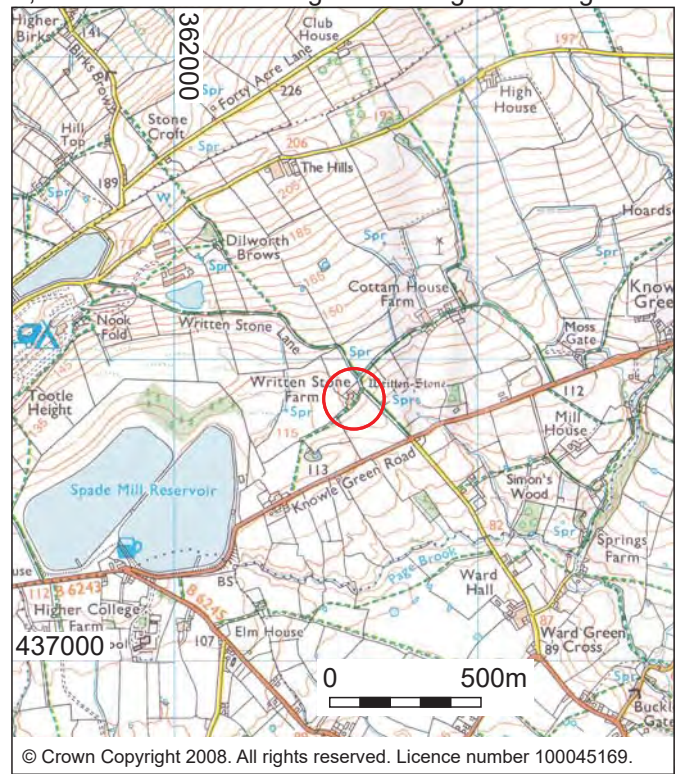
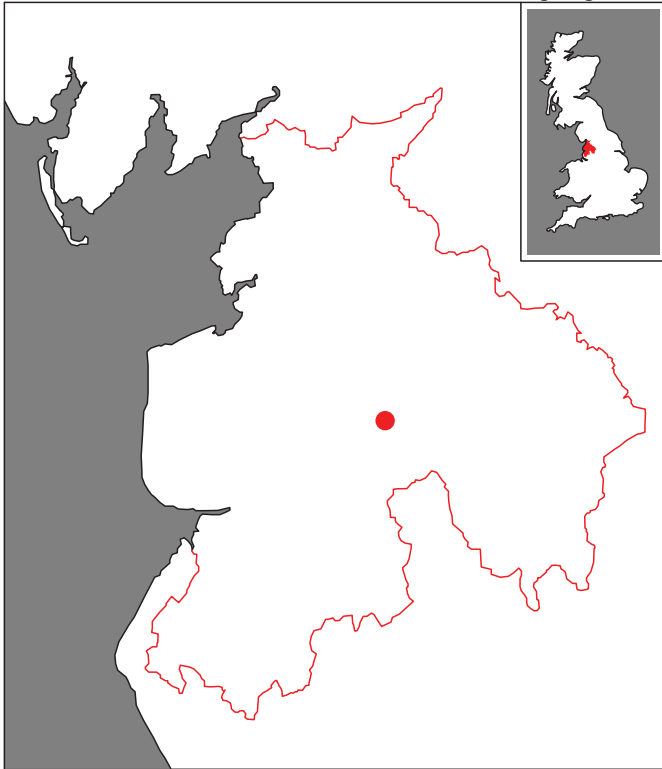


Figure 1: Site location

2. Methodology

2.1 Introduction

2.1.1 The archaeological building recording provides a record of the structures equivalent to Level 3 (for the farmhouse) and Level 2 (for the 'barn', actually 'Barn 2', following on from the earlier project) survey as defined by Historic England (Historic England 2016), with briefer surveys carried out for a small outbuilding to the north of the barn and another to the south-west of the farmhouse. The building recording was carried out according to the guidelines of the Chartered Institute for Archaeologists (CIfA 2014a; 2014b). A suitable archive has also been compiled to provide a permanent paper record of the project and its results, also in accordance with CIfA guidelines (CIfA 2014c).

2.2 Desk-Based Assessment

2.2.1 A desk-based assessment was carried out, as part of the previous building recording (Greenlane Archaeology 2025), in accordance with the guidelines of the Chartered Institute for Archaeologists (CIfA 2014b). This principally comprised an examination of early maps of the site and published secondary sources and is in addition to research carried out for an earlier Historic Building Appraisal (Sunderland Peacock and Associates 2024). A number of sources of information were used during the compilation of the desk-based assessment:

- **Record Office/Archive Centre:** the majority of original and secondary sources relating to the site are deposited in the relevant Record Office(s) or Archive Centre(s), as specified in the cover sheet of this report. Of principal importance are early maps of the site. These were examined in order to establish the development of the site, date of any structures present within it, and details of land use, in order to set the site in its historical, archaeological, and regional context. In addition, any details of the site's owners and occupiers were acquired where available;
- **Online Resources:** where available, mapping such as Ordnance Survey maps and other historical sources were consulted online;
- **Greenlane Archaeology:** Greenlane Archaeology's office library includes maps, local histories, and unpublished primary and secondary sources. These were consulted where relevant, in order to provide information about the history and archaeology of the site and the general area.

2.3 Building Recording

2.3.1 The building recording was carried out to Historic England Level 3 type standards for the farmhouse and Level 2 for the barn (Historic England 2016), the former is a more detailed record taking into account more of the known historical development of the building based on documentary sources, but both provide a relatively detailed record of the respective building. In addition, a brief record was made of a small detached outbuilding to the north of the barn, and a photographic record made of the exterior of a relatively modern outbuilding to the south-west of the house. The recording typically comprised the following elements:

- **Written record:** descriptive records of all parts of the building were made using Greenlane Archaeology *pro forma* record sheets;
- **Photographs:** photographs in colour digital format (as both 12meg jpegs) were taken of the main features of the building, its general surroundings, and any features of architectural or archaeological interest. A selection of the colour digital photographs is included in this report, and the remaining photographs are in the project archive;
- **Drawings:** 'as existing' architect's drawings were provided by the client's architect. These were plotted at a scale of 1:100 and annotated by hand with additional detail.

2.4 Archive

2.4.1 The archive, comprising the drawn, written, and photographic record of the building, will be deposited with the relevant Record Office or Archive Centre, as detailed on the cover sheet of this report, together with a copy of the report. The archive has been compiled according to the standards and guidelines of the ClfA guidelines (ClfA 2014c). In addition, any digital data produced during the project will be archived with the Archaeology Data Service (ADS), and details will be submitted to the Online AccesS to the Index of archaeological investigationS (OASIS) scheme. This is an internet-based project intended to improve the flow of information between contractors, local authority heritage managers and the general public. A copy of the report will be provided to the client and a digital copy of the report will be provided for the relevant Historic Environment Record, as detailed on the cover sheet of this report.

3. Desk-Based Assessment

3.1 Map and Image Regression

3.1.1 **Introduction:** early county-wide maps of the area of 17th and 18th century date tend not to be comprehensive enough to show the site in much detail. For instance, Yates’ map of 1786 only notes a single building, shown as a simple block at the site, and names it ‘Writhen Stone’. The earliest suitable plans of the site date from the mid-19th century onwards.

3.1.2 **Tithe map, 1837:** Written Stone Farm is marked on the tithe map for Dilworth in the parish of Ribchester and named as ‘Written Stone’ (NA IR 30/18/101 1837; Plate 1). Details of the plot numbers recorded in the accompanying tithe apportionment are summarised in Table 1. The L-shape of the farmhouse is discernible, albeit with a jutting block to the south corner, and the south end barn is shown as a simple rectangle. The outbuilding to the north is not depicted. The main buildings are within Plot 415 and some overlap Plot 414 to the north. All of the land was owned by John Browne and occupied by William Browne at the time.



Plate 1: Extract from the tithe map of 1837

Plot	Landowner	Occupier	Description
414	John Browne	William Browne	Garden
415	John Browne	William Browne	House Outbuildings & C

Table 1: Plot details recorded in the tithe apportionment (NA IR 29/18/101 1838)

3.1.3 **Ordnance Survey, 1847:** this edition of the Ordnance Survey map was surveyed in 1844 and produced at a scale of 1:10,560. The farmhouse is shown as a T-shape and the barn as an L-shape jutting out to the east at the north end (Plate 2). The outbuilding to the north is not depicted. The Written Stone is marked as just ‘Stone’ to the east of the house.

3.1.4 **Ordnance Survey, 1895:** the 1895 1:10,560 edition of the Ordnance Survey map was re-surveyed in 1891-92. The farmhouse is shown as a rectangle (Plate 3). The barn is again shown as an L-shape but flipped compared to the earlier edition (cf. Plate 2). The ‘Written Stone’ to the east of the house is not apparently shown, although it is named in Gothic script.



Plate 2 (left): Extract from the Ordnance Survey map of 1847



Plate 3 (right): Extract from the Ordnance Survey map of 1895

3.1.5 **Ordnance Survey, 1912:** the 1912 1:2,500 edition of the Ordnance Survey map was revised in 1910 (Plate 4). The footprint of both the farmhouse and the barn more closely resemble their current plans, and a small outbuilding has been constructed to the north of the barn. The 'Written Stone' is again marked in Gothic script and apparently shown as a rectangular block in its current location.

3.1.6 **Ordnance Survey, 1932:** the 1932 1:2,500 edition of the Ordnance Survey map was revised in 1930. The farmhouse and the barn are unchanged though a small outbuilding is shown immediately to the north of the farmhouse (Plate 5).

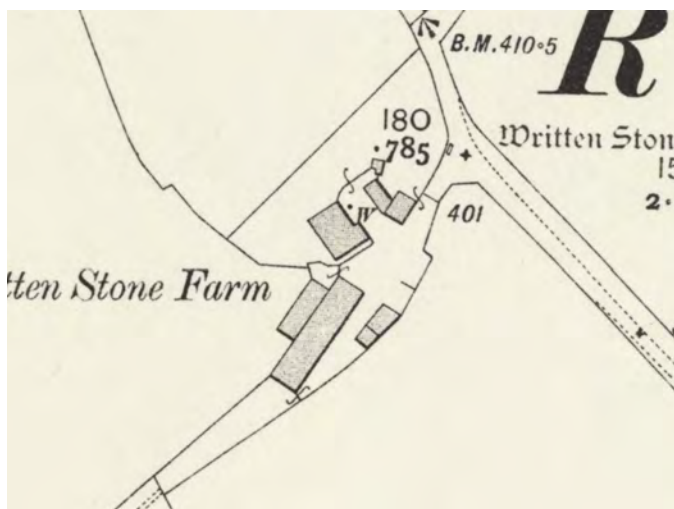


Plate 4 (left): Extract from the Ordnance Survey map of 1912



Plate 5 (right): Extract from the Ordnance Survey map of 1932

3.2 Site History

3.2.1 **Origins:** the farm presumably gets its name from 'The Written Stone', an inscribed stone immediately to the east, dated 1655 (Historic England 2025a; see *Appendix 2*). The farmhouse itself dated to the late 18th century and is Listed Grade II (Historic England 2025b). The history of the Written Stone is somewhat shrouded in legend, but its story, as first recorded in detail by Smith (1888, 27-30), at least demonstrates that a property existed on the site before 1655. Smith describes the stone and its story as follows:

'A huge stone about eight feet long, two feet wide, and eighteen inches deep, with the following inscription on it:-

RAVFFE Radcliffe laid this stone

To lye for ever. A.D. 1655.

The characters are not the raised letters so prevalent in the seventeenth century, but deeply cut into the stone.

Rafe or Ralph Radcliffe was a large property owner in the district at this time, and was probably a descendant of that Duke of Lancaster's (John of Gaunt) "dear Squire Thomas de Radclyff," who was one of the Duke's trustees to his will on his death in 1399. Why Radcliffe laid this stone I cannot tell, except to commemorate the death of some dear relative, or of himself. But, while history is silent upon this point, as about every old curious thing, so about this stone, numerous legendary stories are current in the locality, and are more or less believed in by the residents. The date on the stone speaks of the days of sorcery and witchery. Tradition declares this spot to have been the scene of a cruel and barbarous murder, and it is stated that this stone was put down in order to appease the restless spirit of the deceased, which played nightly gambols long after the body had been "hearsed in earth". A capital story is told of one of the former occupants of Written Stone Farm, who thinking the stone would make a capital "buttery stone", removed it into the house, and applied it to that use. The result was that the indignant or liberated spirit would never suffer the family to rest. Whatever pots, pans, kettles, or articles of crockery were placed upon the stone were tilted over, their contents spilled, and the vessels themselves kept up a clattering sound the livelong night and the beck of the unseen spirit. Thus, worried out his night's rest, the farmer soon found himself compelled to have the stone carefully conveyed back to its original resting-place, where it has remained ever since, and the good man's family were never after disturbed by inexplicable nocturnal noises...

A writer in the "A Stonyhurst Magazine" gives a long and interesting account of his visit to the celebrated stone. "This stone," he says, "is the terror of the neighbourhood. It is said to be haunted!" After relating the "buttery-stone" incident, in a somewhat different manner to what I have done, he goes on to speak of "an old man, still said to be living, whose daughter inhabits a farm further up the haunted lane, who was wending his way homeward, late one evening, when close to the stone he saw a female figure which moved along in front of him; he mended his pace to see who it was, but in spite of every effort he never gained on it. During the whole time he was very close, but could never draw closer, and finally his pursuit ended by the disappearance of its object.

"This was the sprite at play", continues the writer, "but sometimes it was more serious, perhaps in a bad humour. A local doctor, dead many years ago, was driving down the lane late one night. Passing the stone, his horse shied and plunged in a state of extreme terror. It then, in spite of bit and rein, galloped forward at a headlong pace, nor was the doctor able to restrain it until he was a mile or two away from the spot. As soon as he had succeeded in stopping, he got down to see it had anything the matter with it. It was covered with blood! It is related this same doctor, or of another, that he was one night in a public-house in the vicinity, when the conversation turned on the Written Stone. He had been drinking freely, and, unmindful of his former adventure, wagered that he would there and then ride to the stone, boasting that he cared nothing for the imp, if indeed such a being existed. Half-an-hour had passed from the moment when he had started, when suddenly he was described galloping back at a furious speed, but it was not until after the lapse of some time that he gained sufficient courage to relate his adventure. He had ridden boldly up to the stone, when suddenly a shapeless mass appeared, and he was violently

seized about the waist and dragged from his saddle, and then so tightly embraced by the monster that he nearly died in the process”.

3.2.2 The actual origins of the Written Stone are, however, otherwise unknown. It clearly stood or was located near to the site prior to 1655; it is conceivable that it is actually quite ancient, perhaps a standing stone of prehistoric date or even a milestone of Roman origin. It is noteworthy that it is located close to a possible route of the Roman road between the forts at Ribchester, to the south, and Lancaster, to the north (Ratledge 2018).

3.2.3 **Owners and occupiers:** the earliest owners and presumably occupiers of the site appear to have been members of the Ratcliffe family, as already mentioned, who were resident in the area from at least the early decades of the 17th century, with the last of that family resident in the area being George Ratcliffe (Smith 1888, 144-145). The current house was apparently constructed by the Bourn family (*op cit*, 145). The dated hopper of 1784 with the initials ‘WBE’ (and also presumably the partially legible datestone) on the house likely relate to William and Ellen (nee Alston) Bourn, who were married at St Wilfrid’s Church, Ribchester, on the 4th February 1776 (Lancashire Parish Clark Online nd). The census returns show that the Bourn family were still living at the property until at least 1881 (see *Appendix 2* and *Table 2* below), while the datestone of 1892, with the initials ‘WEB’, perhaps also indicates that they still owned the site at that time. The tithe map for that year, however, indicates that the owners were called “Browne”.

3.2.4 A summary of the information of the occupiers found in the census returns is provided in *Table 2* (for more detail see *Appendix 1*). These demonstrated that at certain points the property was considered to be two households and so was presumably split in some form, but it always least partly comprised a working farm.

Year	Occupier	Occupation	Source
1841	Thomas Jump and family	Independent means	Census
	William Bourn and family	Farmer	Census
1851	Elizabeth Bourn and family	Famer of 40 acres	Census
1861	John Bourn and family	Farmer of 40 acres	Census
1871	Robert Bourn and family	Farmer of 38 acres	Census
1881	Robert Bourn and family	Farmer of 28 acres	Census
1891	Sarah Wallbank and family (listed as ‘Cottam House Farm’)	Farmer/cotton weavers	Census
	Richard Fare	Farmer	Census
1901	Richard Fare and family	Farmer	Census
1911	Mr Dagger and family	-	Census

Table 2: Occupiers of Written Stone Farm, 1841 to 1911

3.2.5 **The building:** apart from the map evidence (see *Section 3.1* above) there is relatively little historical information about the barns and outbuildings. Smith describes Written Stone House as a ‘modern building. No traces of the old residence of the Ratcliffe family are now to be seen’ (Smith 1888, 144).

4. Building Recording

4.1 General Site Arrangement

4.1.1 The farmstead comprises a group of buildings, with the farmhouse on the north side, additional outbuildings to the east, the barn to the south-west and outbuildings to the south-east of that. The barn to the south-west and outbuildings to the south-east were recorded as part of a separate project (Greenlane Archaeology 2025).

4.2 Farmhouse – Arrangement and Fabric

4.2.1 **Arrangement:** the main part of the house is the south-east section and its footprint is roughly rectangular. It is two storeys high plus attic. The projecting section to the rear (north-west side) is the same height and almost square in plan.

4.2.2 **Fabric:** externally it is built entirely from dressed yellow gritstone that has recently been repointed in lime. The roof is grey slate in diminished courses with a sandstone ridge. There are two chimneys to the rear and two on the main part, one per gable. The one to the north-east is smaller than the rest. All have ceramic pots. The projecting front wall to the south-east end of the north-west external elevation is in well-dressed blocks as is the front (south-east) elevation, which has V-jointed broached quoins. Detailing to the front around windows is in well-dressed stone.

4.3 Farmhouse – External Detail

4.3.1 **North-east external elevation:** the north-west end of the north-east external elevation has a doorway on the ground floor apparently cut through the remains of a former mullion window with chamfered edge and a small light on the north-west side. The door is up one step with blocks of the foundation course protruding to each side. There is a further door to the south-east with a square stone surround. Both doors are modern tongue and groove plank doors. The window to the south-east has a similar square surround and 20-light fixed casement. The first floor is clearly raised in more dressed blocks and incorporates two windows, with square surrounds and four-light sash casements. There is a single roughly semi-circular corbel between. The return at the south-east end is plain into the main gable. This too is plain with rougher quoins to the north-east. There is a small blocked opening at the base with a massive stone lintel and the chimney has a single ceramic pot. More foundation boulders are apparent on the south-east side.



Plate 6 (left): North-east external elevation of the farmhouse, viewed from the north



Plate 7 (right): North-west door on the north-east external elevation of the farmhouse, viewed from the north-east



Plate 8 (left): South-east door on the north-east external elevation of the farmhouse, viewed from the north-east



Plate 9 (right): Ground floor window to the south-east on the north-east external elevation of the farmhouse, viewed from the north-east



Plate 10: South-east side of the north-east external elevation of the farmhouse, viewed from the east

4.3.2 **South-east external elevation:** the south-east external elevation has a pair of windows at ground floor, split into three by square mullions, with square surrounds, and modern two-light casement windows, the central set being hinged at the top (Plate 11 and Plate 12). These are either side of a central doorway, with dressed surrounds on blocks and a modern tongue and groove door and small semi-circular top with keystone and blocks (Plate 13 and Plate 14). Inside is up two steps (the lower step being a large semi-circular stone), and there are further steps down beyond the garden wall and flagged

path. There is an iron bracket over the door and datestone above, inscribed “W B E | 1784” (Plate 15). There is a small blind window over the surrounds, copying the door, infilled with painted timber (Plate 16). There is a pair of first-floor windows as per those on the ground floor (Plate 11 and Plate 12). A row of semi-circular corbels support the gutter and the metal hopper is inscribed the same as the datestone (Plate 16 and Plate 17).



Plate 11 (left): South-west windows on the south-east external elevation of the farmhouse, viewed from the east

Plate 12 (right): North-east windows on the south-east external elevation of the farmhouse, viewed from south



Plate 13 (left): General view of the south-east external elevation of the farmhouse from the south-east



Plate 14 (right): Door in the south-east external elevation of the farmhouse, viewed from the south-east



Plate 15 (left): Datestone in the south-east external elevation of the farmhouse, viewed from the south-east

Plate 16 (right): Blind window in the south-east external elevation of the farmhouse, viewed from the south-east



Plate 17: Hopper, viewed from the south-east

4.3.3 **South-west external elevation:** the south-west external elevation has a roughcast finish, which is painted white (Plate 18), with dressed V-jointed quoins at the south-east end. There are three windows (over the stairs), the lower two of which have modern single-light casements and the top one of which is blocked leaving an alcove (Plate 19). There are two windows to the north-west to ground floor level, one is blocked, part of a mullion window, with the hoodmold, single ovolo-moulded transom, and chamfered stone sill, lintel and north-west jamb remaining (Plate 20). The other is a nine-light hinged casement. The doorway to the north-west of these is plain, with a thin stone lintel and modern tongue and groove plank door. There is a further ground-floor window to the north-west, with an overlong sill and plain lintel and modern two-light hinged casement, and there are projecting boulders at the north-west end (Plate 18). The first floor has a plain window on the south-east side, with a modern casement, and there are two windows to the north-west, both with square stone surrounds and modern four-light hinged casement windows (e.g. Plate 21).



Plate 18 (left): South-east end of the south-west external elevation of the farmhouse, viewed from the west

Plate 19 (right): Windows at the south-east end of the south-west external elevation of the farmhouse, viewed from the south-west



Plate 20 (left): Central windows on the south-west external elevation of the farmhouse, viewed from the south-west

Plate 21 (right): First floor window on the south-west external elevation of the farmhouse, viewed from the south-west

4.3.4 **North-west external elevation:** the main part is the gable, which is mostly plain with large quins (some of which are reused and fairly irregular), and angled thin stones denote the line of a flue (Plate 22). There is a blocked window low on the north-east side, with a timber lintel, and possibly a second blocked feature to the south-west (both to ground floor level; Plate 24 and Plate 25). The wall has evidently been raised from a steeper pitch with more regular stone, although the lowest courses are also more rectangular blocks than to the centre (Plate 22). There is a projecting foundation boulder at the north-east end. The return to the north-east is plain with dressed quins (Plate 23).



Plate 22 (left): North-west external elevation gable of the farmhouse, viewed from the north-west



Plate 23 (right): Return in the north-west external elevation of the farmhouse, viewed from the north-west



Plate 24 (left): Blocked feature to the north-east side of the north-west external elevation of the farmhouse, viewed from the north-west



Plate 25 (right): Blocked feature to the south-west side of the north-west external elevation of the farmhouse, viewed from the north-west

4.4 Farmhouse – Internal Detail

4.4.1 **Ground floor Room 1 (G1):** this room has a concrete floor that steps up in the west corner. It has a flat, modern plaster ceiling and two narrow beams north-west/south-east (Plate 26). The walls are finished with modern plaster and paint. The north-east elevation has a doorway on the south-east side with plain surround and simple beaded tongue and groove door and projecting blocks at the base (Plate 27). The south-east elevation has a doorway on the north-east side, down two stone steps, with sloping beaded tongue and groove planks over the lintel and plank and batten door to the south-east (Plate 27). The wall here is very thick. The south-west elevation has a doorway to the south-east side with a plain modern plank and batten door (Plate 28). The window to the north-west has square jambs and modern two-light casement and tiled sill and brick base for a large sink below. The wall is finished with plaster with various boards attached for pipes. The north-west elevation is plain except for the projecting

chimneybreast (Plate 29). The hearth is blocked with concrete blocks and has a dressed stone surround and lintel on scrolled corbels with angled entablature over.



Plate 26 (left): Beams in G1 (farmhouse), viewed from the east



Plate 27 (right): Doors to the east in G1 (farmhouse), viewed from the west



Plate 28 (left): South-west elevation of G1 (farmhouse), viewed from the north-east

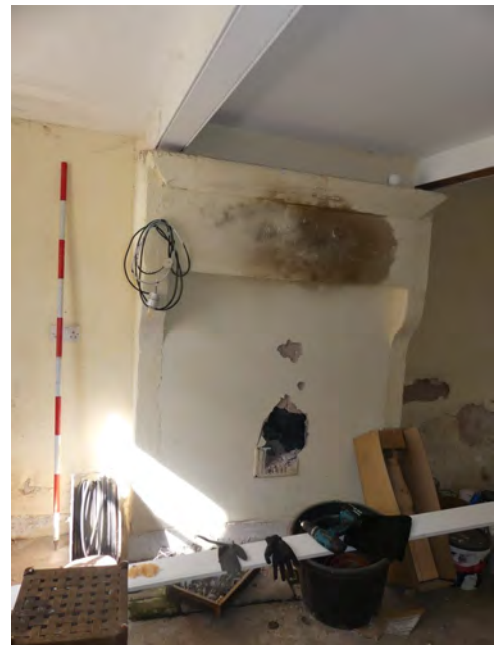


Plate 29 (right): Fireplace in G1 (farmhouse), viewed from the south-east

4.4.2 **Ground floor Room 2 (G2):** this room has a concrete floor and timber stairs dogleg in the east corner (Plate 30). The stairs are mostly beaded sawn plank construction but have a massive rough timber post on the west side. The ceiling is modern flat plaster, with a single north-west/south-east beam, boxed with modern timber, up to the stair post. The walls are finished with modern plaster. The north-west and south-east elevations are plain. The door to the south-west is a plain plank and batten door on modern strap hinges (Plate 31). The north-east elevation has a doorway with similar door to the south-west and a small window to the north-west (Plate 32). There is an alcove in the north-east side of the south-east elevation, on the stair landing. This has a stone step/sill, the south-west jamb is boarded

over, and there is a timber lintel, but the opening seems to continue to the floor above (see Plate 79 and Plate 80).



Plate 30 (left): Stairs in G2 (farmhouse), viewed from the north-west

Plate 31 (right): Door to the south-west in G2 (farmhouse), viewed from the north



Plate 32: Door to the north-east in G2 (farmhouse), viewed from the south-west

4.4.3 **Ground floor Room 3 (G3):** this room has a concrete floor and modern flat plaster ceiling with a single north-west/south-east beam across, boxed with beaded planks. The walls are clad with modern timber sheets on stud, with modern plaster behind, and concrete skirting. There are kitchen units to the south-east (Plate 33). The north-west and south-east elevations are plain where visible. The south-west elevation has a small window, with square jambs and nine-light hinged casement (Plate 34). The north-east elevation has an early timber muntin or plank wall, partly exposed behind the modern sheets (Plate 35 and Plate 36). There is a door on the north-west side, with a rough timber jamb to the south-east and

modern piece to the north-west and forming the lintel (Plate 35). There is a loose early plank and batten door with long strap hinges hung on pintles (Plate 37).



Plate 33 (left): South-east elevation of G3 (farmhouse), viewed from the north-west

Plate 34 (right): South-west elevation of G3 (farmhouse), viewed from the north



Plate 35 (left): North-east elevation of G3 (farmhouse), viewed from the south-west

Plate 36 (right): Detail of planks in the north-east elevation of G3 (farmhouse), viewed from the south-west



Plate 37: Loose door in G3 (farmhouse)

4.4.4 Ground floor Room 4 (G4): this room has a concrete floor and flat plaster ceiling supported by two rough, hand-finished, north-west/south-east beams, with attached iron hooks and loops (Plate 38). The walls are plaster and wallpapered and there is a concrete skirting. The north-east elevation has a doorway on the north-west side, with a moulded surround, housing a three-panel door covered by beaded tongue and groove planks (Plate 39). The window to the south-east has a 20-light fixed casement, splayed jambs, tiled sill, and kitchen unit below (Plate 40). The south-east elevation has a central wide fireplace housing an Aga with a shelf on timber brackets over (Plate 41). It steps back on the south-west side. The alcove to the north-east houses a cupboard with a modern panel door and four shelves inside. The doorway on the south-west side has a plain surround with moulded four-panel door (Plate 42). The south-west elevation has plaster over early planks (Plate 43). The north-west elevation has a doorway on the south-west side with moulded surround, housing a plank and batten door covered with a plain panel (Plate 44).



Plate 38 (left): Beams in G4 (farmhouse), viewed from the west

Plate 39 (right): North-east elevation of G4 (farmhouse), viewed from the south-west



Plate 40 (left): Window in the north-east elevation of G4 (farmhouse), viewed from the south-west



Plate 41 (right): South-east elevation of G4 (farmhouse), viewed from the north-west



Plate 42 (left): Door in the south-east elevation of G4 (farmhouse), viewed from the north-west



Plate 43 (right): Detail of planks in the south-west elevation of G4 (farmhouse), viewed from the north-east



Plate 44: North-west elevation of G4 (farmhouse), viewed from the south-east

4.4.5 **Ground floor Room 5 (G5):** this L-shaped corridor runs from the front door to the south-east then turns to the stairs to the south-west. The original flag floor is pale grey sandstone (Plate 45). The room has a flat plaster ceiling and two beams north-east/south-west (plastered over) and one very thin one north-west/south-east. The stairs to the south-west have a fairly plain square newel and handrail and heavy square balusters (Plate 46 and Plate 47). There are beaded tongue and groove planks over the sides and a small plank and batten door to the cupboard under the stairs with later strap hinges and earlier L-shaped ones (Plate 48). All the timber is sawn and fairly rough. The walls are finished with plaster and textured wallpaper and a moulded picture rail and skirting. The north-west elevation has some plaster removed over the stairs showing a butt joint at quoins to the south-west of the door (Plate 49). The door to the north-east is up one step and has a plain surround and four-panel moulded door and there is a large rounded corbel above (Plate 50). The north-east elevation has a central doorway with an early six-panel door, moulded and raised and fielded, and moulded surround (Plate 51). The south-east elevation has a doorway with square surrounds housing a semi-circular top and modern plank and batten door with two lights in the top (Plate 52). The south-west elevation has a central doorway with moulded surround and six-panel door as per the door to the north-east (Plate 53). It has early metal coat hooks, with acorn finials attached to a thick batten, and there is a cupboard under the stairs to the south-west (Plate 46).



Plate 45 (left): Floor in G5 (farmhouse), viewed from the south-east

Plate 46 (right): Stairs in G5 (farmhouse), viewed from the north-east



Plate 47 (left): Side of the stairs in G5 (farmhouse), viewed from the east

Plate 48 (right): Cupboard below the stairs in G5 (farmhouse), viewed from the north-east



Plate 49 (left): Butt in north-west wall of G5 (farmhouse), viewed from the east

Plate 50 (right): North-west elevation of G5 (farmhouse), viewed from the south-east



Plate 51 (left): Door to the north-east in G5 (farmhouse), viewed from the south-west
Plate 52 (right): Door to the south-east in G5 (farmhouse), viewed from the north-west



Plate 53: Door to the south-west in G5 (farmhouse), viewed from the north-east

4.4.6 **Ground floor Room 6 (G6):** this room has a flag floor as per G5 (Plate 54). It has a flat plaster ceiling and two plastered over beams north-east/south-west (Plate 55). The walls are finished with plaster and textured wallpaper and plain skirting. The north-west elevation is plain. The north-east elevation has a doorway on the north-west side, with an early six-panel door on L-shaped hinges and plain moulded surround (Plate 56). The south-east elevation has a large window and splayed jambs and plain window seat, with plain panelling to the back, and three-part window with timber mullions in simple beaded surround (Plate 57). The south-west elevation has a central fireplace with a mid-20th century tiled surround (Plate 58 and Plate 59).



Plate 54 (left): Floor in G6 (farmhouse), viewed from the north
Plate 55 (right): Beams in G6 (farmhouse), viewed from the north



Plate 56 (left): Door to the north-east in G6 (farmhouse), viewed from the south-west
Plate 57 (right): Window to the south-east in G6 (farmhouse), viewed from the north



Plate 58 (left): South-west elevation of G6 (farmhouse), viewed from the north-east

Plate 59 (right): Fireplace in G6 (farmhouse), viewed from the north-east

4.4.7 Ground floor Room 7 (G7): this room has a flag floor as per G5 and G6 (Plate 60). It has a flat plaster ceiling with two beams, both of which are boxed in beaded timber (Plate 61 and Plate 62). The walls are plaster and paint and there is a plain skirting and moulded picture rail. The north-west elevation is plain (Plate 63). The north-east elevation has a central fireplace, with 20th century ceramic surround and hearth, and there is an alcove to the south-east filled by a large cupboard with two pairs of simple panelled doors on small H-shaped hinges (Plate 64 to Plate 66). There are four shelves in the top and electrical fittings in the bottom. The south-east elevation has a wide window with splayed jambs and decayed timber lintel (Plate 67). There are two mullions and a plain window seat and panelling. Some scumbled paint finish is evident. The south-west elevation has a six-panel door on L-shaped hinges with simple moulding (Plate 68).



Plate 60 (left): Floor in G7 (farmhouse), viewed from the south

Plate 61 (right): Beams in G7 (farmhouse), viewed from the west



Plate 62 (left): Beams in G7 (farmhouse), viewed from the south-west



Plate 63 (right): North-west elevation of G7 (farmhouse), viewed from the south-east



Plate 64 (left): North-east elevation of G7 (farmhouse), viewed from the south-west



Plate 65 (right): Cupboard in the north-east elevation of G7 (farmhouse), viewed from the south-west



Plate 66: Hinge on the cupboard in G7 (farmhouse), viewed from the south-west



Plate 67 (left): Window in the south-east elevation of G7 (farmhouse), viewed from the north-west



Plate 68 (right): South-west elevation door, G7 (farmhouse), viewed from the north-east

4.4.8 **First floor Room 1 (F1)**: this room has modern, narrow, tongue and groove floorboards and a flat plaster ceiling with a hatch to the attic on the north-east side. The walls are finished with modern plaster, left unpainted, and there is a plain modern skirting. The north-east elevation is plain except for a door on the south-east side, with plain modern jambs and ovolo-moulded surround (Plate 69). It retains

the original timber lintel, but the door is a modern three-panel door. The south-east elevation is plain except for a central doorway with plain surround and frame on the south-east side (Plate 70). There is a single step down and a mid-20th century four-panel door with simple mouldings. The south-west elevation has a window north-west of centre, with plain square jambs and modern timber sill and four-light hinged casement (Plate 71). The north-west elevation has a central chimneybreast, projecting on the south-west side and boxed in on the upper part of the north-east east side with stud (Plate 72). The fireplace has a dressed stone surround with rounded corners and small plinths at the base and a thin stone mantle (Plate 73). The hearth is boarded over.

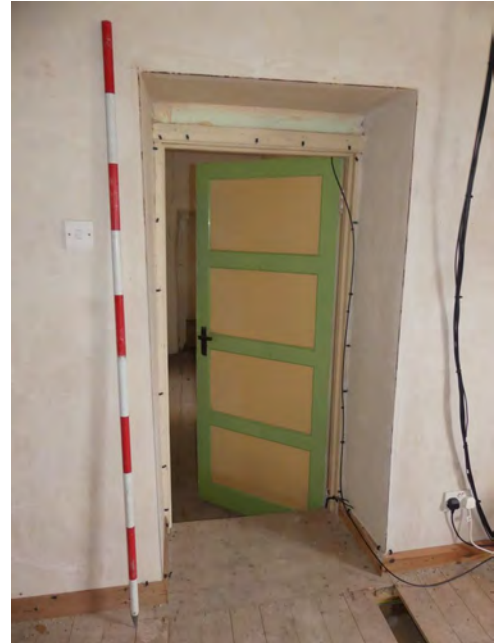


Plate 69 (left): Doors to the east in F1 (farmhouse), viewed from the west

Plate 70 (right): Door to the south-east in F1 (farmhouse), viewed from the north-west



Plate 71 (left): Window to the south-west in F1 (farmhouse), viewed from the north-east

Plate 72 (right): North-west elevation of F1 (farmhouse), viewed from the south-east



Plate 73: Fireplace in F1 (farmhouse), viewed from the south-east

4.4.9 **First floor Room 2 (F2):** this room has the original wide floorboards and is open to the rear stair in the east corner (Plate 74 and Plate 75). There is a roughly metre square space in the floorboards filled in on the north-east side in front of the window (Plate 76). The stairs have a very plain square newel post, simple plank handrail and simple timber steps (Plate 75 and Plate 77). The ceiling has the original plain flat plaster finish, and the walls too are finished with plaster and painted. The north-east elevation has a four-light sash window, with no horns, to the north-west of centre, with square jambs and timber sill (Plate 78). The south-east elevation is plain except for a possible low blocked opening on the north-east side above the alcove on the ground floor (Plate 79 and Plate 80). The south-west elevation is plain except for the modern door (Plate 81). The north-west elevation is plain in its entirety (Plate 82).



Plate 74 (left): Floor in F2 (farmhouse), viewed from the south



Plate 75 (right): Newel and handrail in F2 (farmhouse), viewed from the west



Plate 76 (left): Infilled hole in the floor to the north-east in F2 (farmhouse), viewed from the south-west

Plate 77 (right): Stairs in F2 (farmhouse), viewed from the south-west



Plate 78 (left): North-east window in F2 (farmhouse), viewed from the south-west

Plate 79 (right): Opening to the south-east in F2 (farmhouse), viewed from the west



Plate 80 (left): Alcove to the south-east in G2 (farmhouse), viewed from the north-west

Plate 81 (right): Door to the south-west in F2 (farmhouse), viewed from the north



Plate 82: North-west elevation of F2 (farmhouse), viewed from the south-east

4.4.10 **First floor Room 3 (F3):** this room has 20th century narrow tongue and groove floorboards and flat ceiling finished with plastic(?) panels. The walls are plaster and wallpapered and tiled over the lower part. The tiles are built out from the wall, with a bath on the north-west side and sink to the south-west (Plate 85 and Plate 86). The north-east elevation is a stud wall and incorporates a high-level window of three lights with a thin moulded surround (Plate 83). The early 20th century four-panel door in a fairly plain moulded surround to the south-east has Art Deco Bakelite handles (Plate 84). The south-east elevation is a plain stud partition. The south-west elevation has a modern two-light hinged UPVC window on the south-east side with slightly splayed jambs and tiled sill (Plate 85). The north-west elevation is plain, with a bath against (Plate 86).



Plate 83 (left): Window to the north-east in F3 (farmhouse), viewed from the south-west

Plate 84 (right): Door to the north-east in F3 (farmhouse), viewed from the south-west

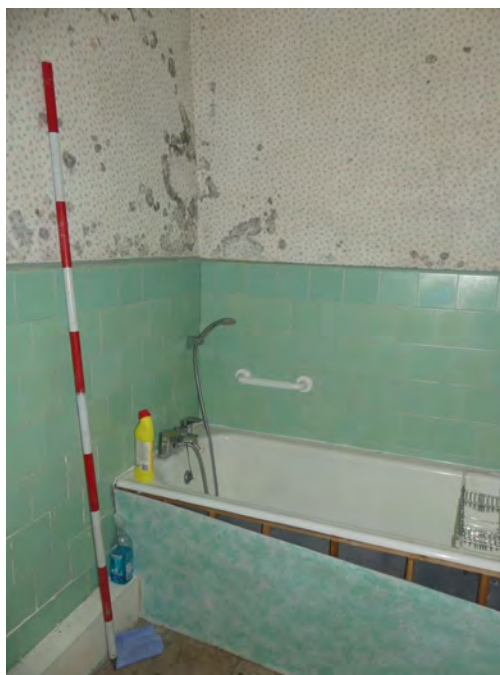


Plate 85 (left): Window to the south-west in F3 (farmhouse), viewed from the north-east

Plate 86 (right): North-west elevation in F3 (farmhouse), viewed from the east

4.4.11 **First floor Room 4 (F4)**: this room forms a short corridor north-west/south-east. It has narrow, 20th century, tongue and groove floorboards and a flat plaster ceiling with an attic hatch on the south-west side. The walls are plaster and textured wallpaper, with moulded skirting board to the south-west only. The north-east elevation is plain. The south-east elevation has a low doorway with an early plank and batten door on strap hinges on pintles and an early latch (Plate 87 and Plate 88). The south-west elevation has two doorways with simple moulded surrounds, both with early-to-mid 20th century four-panel doors, simple moulding, and Bakelite Art Deco handles (Plate 89). There are Bakelite light switches between the two doors. There is a high window to the north-west with three lights and narrow

moulded surround. The north-west elevation has a doorway up a step and the same style Art Deco four-panel door and handles as per the others (Plate 90).



Plate 87 (left): Door to the south-east in F4 (farmhouse), viewed from the north-west

Plate 88 (right): Door hinge on the door to the south-east in F4 (farmhouse), viewed from the north-west



Plate 89 (left): Doors to the south-west in F4 (farmhouse), viewed from the north

Plate 90 (right): Door to the north-west in F4 (farmhouse), viewed from the south-east

4.4.12 **First floor Room 5 (F5):** this room has 20th century tongue and groove floorboards and the ceiling is clad with plastic panels. The walls are plastered and wallpapered. The elevations are mostly plain. There is a doorway to the north-east through an Art Deco door as per F3 and F4. The window above the toilet to the south-west is a UPVC two-light hinged casement and has a tiled sill and square jambs (Plate 91). The concrete lintel is exposed externally.



Plate 91: Window to the south-east in F5 (farmhouse), viewed from the north-east

4.4.13 **First floor Room 6 (F6)**: this room has narrow tongue and groove floorboards and lath and plaster ceiling. The walls are finished with wallpaper over plaster, with some cracks and bulging to the north-west. The north-east elevation has a four-light sash window on the south-east side, with fairly square jambs, moulded surround and simple timber sill (Plate 92). The south-east elevation has a central chimneybreast (Plate 93). The alcove to the north-east is filled by a 20th century cupboard housing the water tank (Plate 94). The central fireplace has a small cast-iron style fire surround aesthetic (Plate 95). The doorway to the south-west has a four-panel moulded door in moulded surround (Plate 96) and there is a narrow beam in the ceiling above. The south-west and north-west elevations are plain (Plate 97).



Plate 92 (left): Window to the north-east in F6 (farmhouse), viewed from the south-east



Plate 93 (right): South-east elevation of F6 (farmhouse), viewed from the north-west



Plate 94 (left): Cupboard in F6 (farmhouse), viewed from the north-west



Plate 95 (right): Fireplace in F6 (farmhouse), viewed from the north-west



Plate 96 (left): Door in the south-east elevation of F6 (farmhouse), viewed from the north-west

Plate 97 (right): North-west and south-west elevations of F6 (farmhouse), viewed from the east

4.4.14 **First floor Room 7 (F7)**: this short corridor links to the stairs. It has the original wide floorboards (Plate 98) and a flat plaster ceiling with two north-west/south-east beams. It is open to the stairs that lead to ground floor and the attic to the south-west. The fairly rough and hand-finished timbers are exposed behind the section to the upper floor (Plate 99). One piece is clearly reused as it retains a large number of pegs. The walls are plaster with textured wallpaper. The north-east elevation is plain except for the doorway with moulded surround and six raised and slightly moulded panels as per G4 to G6 (Plate 100). The south-east elevation is also mostly plain except for a similar door on the north-east side (Plate 101). The stairs to the south-west side of the room have a beaded square newel post, with a moulded top, and fairly thick square balusters and beaded tongue and groove planks on the north-west side (Plate 102). The door to the attic has four moulded panels (Plate 103). The south-west elevation is plain. The north-west elevation has a low doorway on the south-west side, with two moulded panels (fixed over planks on the other side) and an early latch (Plate 104; Plate 105). There is another doorway to the north-east, with a 19th century moulded four-panel door in moulded surround (Plate 106). The south-west side of the landing has wide floorboards and also fairly rough timber battens under the stairs and a single-light window with splayed jambs and plain timber sill.



Plate 98 (left): Floor in F7 (farmhouse), viewed from the north-east

Plate 99 (right): Under the attic stairs in F7 (farmhouse), viewed from the north-east



Plate 100 (left): North-east door in F7 (farmhouse), viewed from the south-west

Plate 101 (right): South-east door in F7 (farmhouse), viewed from the north-west



Plate 102 (left): Stairs in F7 (farmhouse), viewed from the east



Plate 103 (right): South-west door to the stairs in F7 (farmhouse), viewed from the north-east



Plate 104 (left): South-west door to the north-west in F7 (farmhouse), viewed from the south-east



Plate 105 (right): Door hinge on the south-west door to the north-west in F7 (farmhouse), viewed from the south-east



Plate 106: North-east door to the north-west in F7 (farmhouse), viewed from the south-east

4.4.15 **First floor Room 8 (F8)**: this room has the original, very wide, timber floorboards (some are over 12 inches wide; Plate 107 and Plate 108). It has a flat plaster ceiling and two plastered over beams, north-west/south-east, on the north-east side (Plate 109). The walls are finished with plaster and flock wallpaper and there is a moulded picture rail and skirting. The north-east elevation is plain (Plate 109). The south-east elevation has a large window on the south-west side, with splayed jambs, two timber mullions and a plain window seat with panelling around (Plate 110). The south-west elevation has a shallow projecting chimneybreast and stone fire surround on the south-east side, which is fairly square but has rounded corners and a rounded entablature mantle (Plate 111 and Plate 112). It has a tiled insert and fluted iron hearth insert around a ceramic back. The north-west elevation is plain except for a plain six-panel door on the north-east side with narrow moulded surround and L-shaped hinges (Plate 113 and Plate 114).

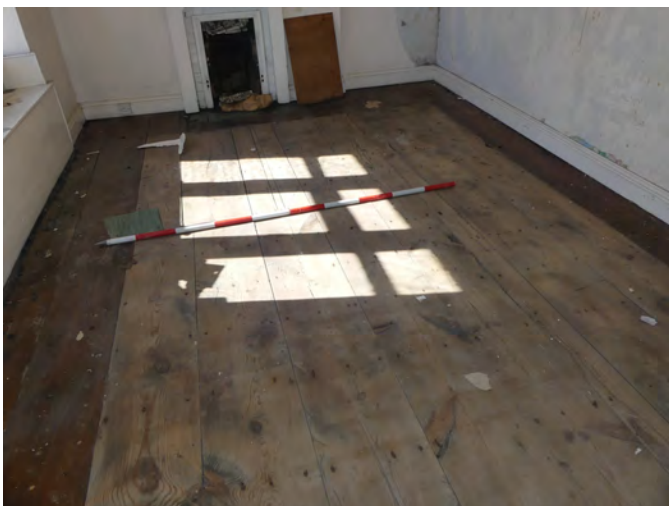


Plate 107 (left): Floor in F8 (farmhouse), viewed from the north-east

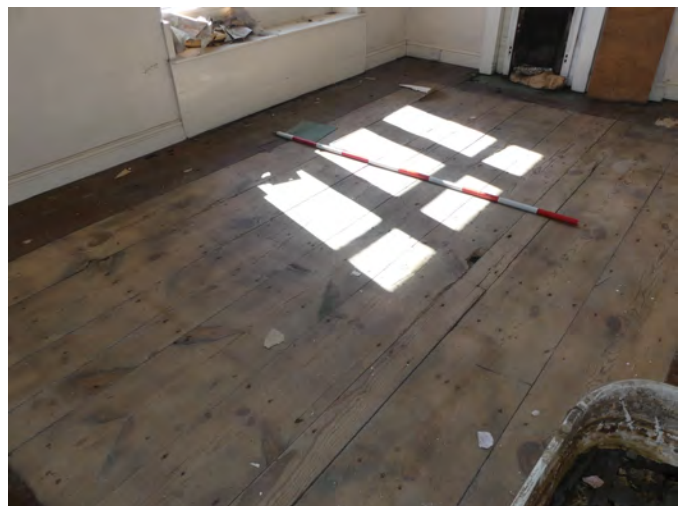


Plate 108 (right): Floor in F8 (farmhouse), viewed from the north



Plate 109 (left): North-east end of F8 (farmhouse), viewed from the south-west

Plate 110 (right): South-east window in F8 (farmhouse), viewed from the north-west



Plate 111 (left): South-west elevation of F8 (farmhouse), viewed from the north-east

Plate 112 (right): Fireplace in F8 (farmhouse), viewed from the north-east



Plate 113 (left): Door in the north-west elevation of F8 (farmhouse), viewed from the south-east

Plate 114 (right): Door hinge on the door in the north-west elevation of F8 (farmhouse), viewed from the south-east

4.4.16 **First floor Room 9 (F9)**: this room has narrow tongue and groove floorboards, (original) flat plaster ceiling and two north-west/south-east beams with beaded boxing (Plate 115 and Plate 116). The walls are finished with plaster and textured wallpaper. The north-east elevation has a tapering chimneybreast, but is otherwise plain, and no hearth visible (Plate 117). The south-east elevation has a large window, with slightly splayed jambs, two timber mullions and plain window seat with plain panelling (Plate 118). The south-west elevation is plain except for a doorway on the north-west side, with moulded surround and a plain, six-panel door on L-shaped hinges (Plate 119 to Plate 121). The north-west elevation is plain.

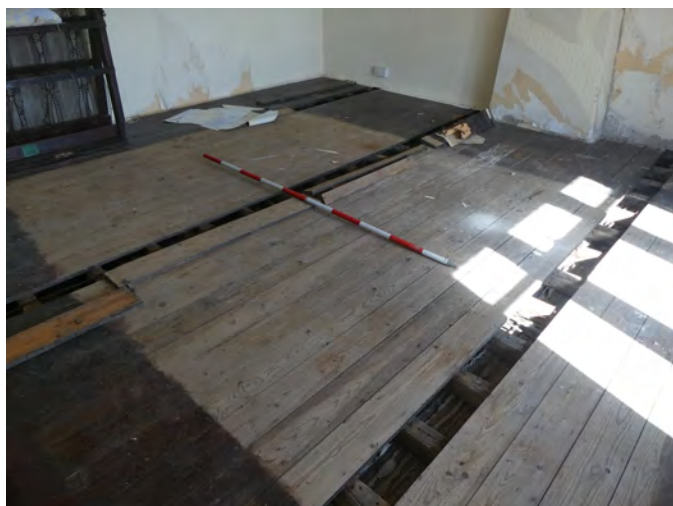


Plate 115 (left): Floor in F9 (farmhouse), viewed from the south



Plate 116 (right): Beams in F9 (farmhouse), viewed from the north



Plate 117 (left): North-east elevation of F9 (farmhouse), viewed from the south-west

Plate 118 (right): Window in the south-east elevation of F9 (farmhouse), viewed from the north-west



Plate 119 (left): South-west and north-west elevations of F9 (farmhouse), viewed from the east

Plate 120 (right): Door in the south-west elevation of F9 (farmhouse), viewed from the north-east



Plate 121: Door hinge on the door in the south-west elevation in F9 (farmhouse), viewed from the north-east

4.4.17 **Attic-level Room (A1)**: this room has modern floor formed of sawn timber joists and plasterboard. It is open to the roof, which has modern felt and sawn rafters and ridge purlin (Plate 122 and Plate 123). The other three purlins per pitch are all hand-finished and at least some are reused (possibly crucks), with empty slots and pegs. The north-west and south-east walls have exposed stone blocks in fairly rough courses. The north-west elevation has chimneybreast remaining (Plate 124). The top part is seven or more courses of handmade brick and it steps out below this. The south-east elevation is plain (Plate 125) with a small corbel at the apex.



Plate 122 (left): Purlins to the south-west in A1 (farmhouse), viewed from the south-east



Plate 123 (right): Purlins to the north-east in A1 (farmhouse), viewed from the south-west



Plate 124 (left): North-west elevation of A1 (farmhouse), viewed from the south-east

Plate 125 (right): South-east elevation of A1 (farmhouse), viewed from the north-west

4.4.18 **Attic-level Room (A2)**: the floor is sawn joists supporting the lath plaster ceiling of the room below. The room is open to the roof. There are three hand-finished purlins per pitch and sawn ridge purlin and rafters. The north-west and south-east elevations are exposed stone. The north-west elevation is plain (Plate 126 and Plate 127). The south-east elevation has a brick chimneybreast, slightly stepped out on the south-west side, with handmade bricks in the top (Plate 128 and Plate 129). The line of the former lower roofline butting against the north-east side is evident as a line of mortar and it is raised to the north-east above.



Plate 126 (left): North-west elevation of A2 (farmhouse), viewed from the south-east

Plate 127 (right): North-west elevation of A2 (farmhouse), viewed from the south-east



Plate 128 (left): Purlins to the north-east in A2 (farmhouse), viewed from the south-west

Plate 129 (right): South-east elevation of A2 (farmhouse), viewed from the north-west

4.4.19 **Attic-level Room (A3)**: this room has early floorboards in fairly poor condition and the hand-finished joists are exposed in places (Plate 130 and Plate 131). The room is open to the roof. There are two purlins on the south-east side and three to the north-west (Plate 132 to Plate 135). All are hand-finished and roughly chamfered, and some are evidently reused. There is a diagonal ridge purling and the rafters are also hand-sawn. There are two tie beam trusses, but just the principal rafters are exposed. The south-west truss has curving bases and is pegged at the overlapping joint (south-east on north-west) (Plate 136, Plate 137 and Plate 138). Red chalk lines are drawn on the south-west face (Plate 139 and Plate 140). The north-east truss is straighter and thinner at the top, with angled braces below each end, with carpenter's marks "I" at the north-west end and "II" at the south-east at the junction on the south-west face (Plate 141 to Plate 145). There is an extra short purlin on the north-west side, perhaps a piece of reused timber framing, with an empty vertical socket and a row of four peg holes (Plate 146).



Plate 130 (left): Floor in A3 (farmhouse), viewed from the south-west

Plate 131 (right): Floor in A3 (farmhouse), viewed from the west



Plate 132 (left): Reused purlin in A3 (farmhouse), viewed from the north-west



Plate 133 (right): Purlins to the south-east side of A3 (farmhouse), viewed from the west



Plate 134 (left): Purlins to the south-east side of A3 (farmhouse), viewed from the west



Plate 135 (right): Purlins to the south-east side of A3 (farmhouse), viewed from the north



Plate 136 (left): South-west truss in A3 (farmhouse), viewed from the north-east



Plate 137 (right): South-east end of the south-west truss in A3 (farmhouse), viewed from the south-west



Plate 138: Top of the north-east truss in A3 (farmhouse), viewed from the south-west



Plate 139 (left): North-west end of the south-west truss in A3 (farmhouse), viewed from the south



Plate 140 (right): South-east end of the north-east truss in A3 (farmhouse), viewed from the south-west



Plate 141 (left): North-east truss in A3 (farmhouse), viewed from the south-west



Plate 142 (right): South-east end of the north-east truss in A3 (farmhouse), viewed from the north-east



Plate 143 (left): North-west end of the north-east truss in A3 (farmhouse), viewed from the south-west

Plate 144 (right): South-east end of the north-east truss in A3 (farmhouse), viewed from the south-west



Plate 145 (left): Top of the north-east truss in A3 (farmhouse), viewed from the south-west

Plate 146 (right): Reused purlin on the north-east truss in A3 (farmhouse), viewed from the south

4.4.20 The walls are finished with rough plaster and paint. The top of the wall (with plaster), between F8 and F9, is visible just below the floorboards. The north-east elevation has a narrow chimney stack in handmade brick (the top recently rebuilt) (Plate 147). The brick is dark red, each 220mm by 110mm by 70mm, and there is one projecting throughstone on the south-east side. The south-east elevation is plain with one projecting stone near the centre. The south-west elevation has an angled chimneybreast across the centre, with a corbel below the ridge purlin (Plate 148). There is a blocked window to the north-west, with a rough timber lintel and stone sill forming the lintel of the window on the landing below (Plate 149). The floor is open to the stairs to the west corner, with the same newel and handrail and balusters as the floor below (Plate 150). The raised brick of the chimney to the north-west elevation corresponds to the centre of the north-west range, with projecting stone denoting the original roofline (Plate 151 and Plate 152). It is raised on top with bricks similar to those to the north-east (Plate 151; cf. Plate 147). The north-east end is plaster and plain.



Plate 147 (left): North-east elevation of A3 (farmhouse), viewed from the south-west

Plate 148 (right): South-west elevation of A3 (farmhouse), viewed from the north-east



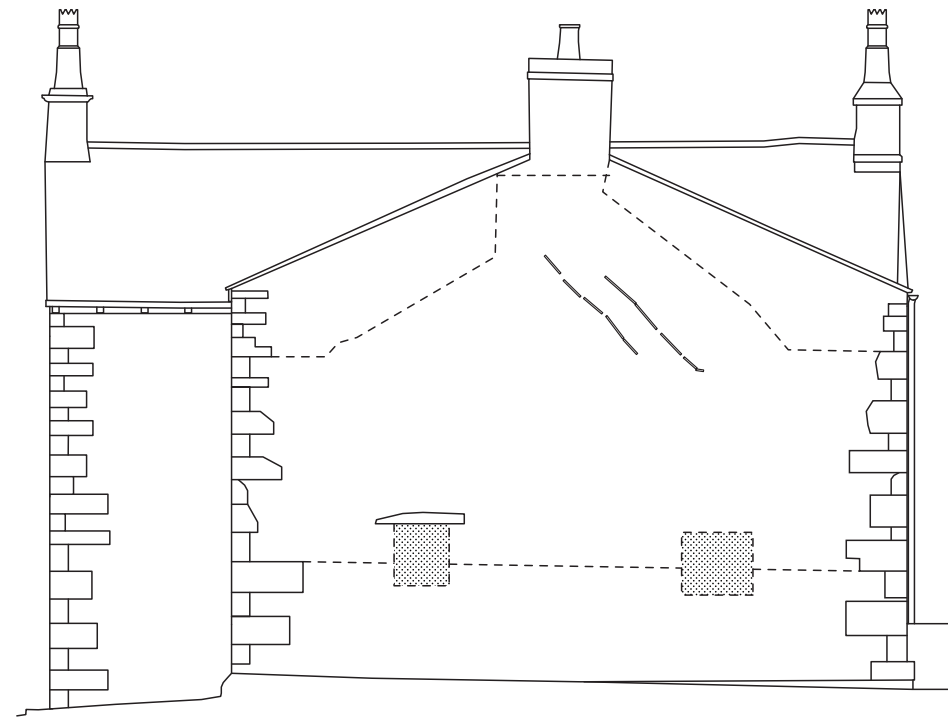
Plate 149 (left): Windows to the south-west in A3 (farmhouse), viewed from the north-east

Plate 150 (right): Stairs in A3 (farmhouse), viewed from the east



Plate 151 (left): Chimney in the north-west elevation of A3 (farmhouse), viewed from the south-east

Plate 152 (right): Roofline in the north-west elevation of A3 (farmhouse), viewed from the south-east

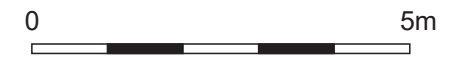


NORTH-WEST EXTERNAL ELEVATION



SOUTH-WEST EXTERNAL ELEVATION

FARMHOUSE



Key:

- edge uncertain
- ▨ cross-sectional wall
- ▤ blocked feature



SOUTH-EAST EXTERNAL ELEVATION



NORTH-EAST EXTERNAL ELEVATION

Figure 2: External elevations of the farmhouse

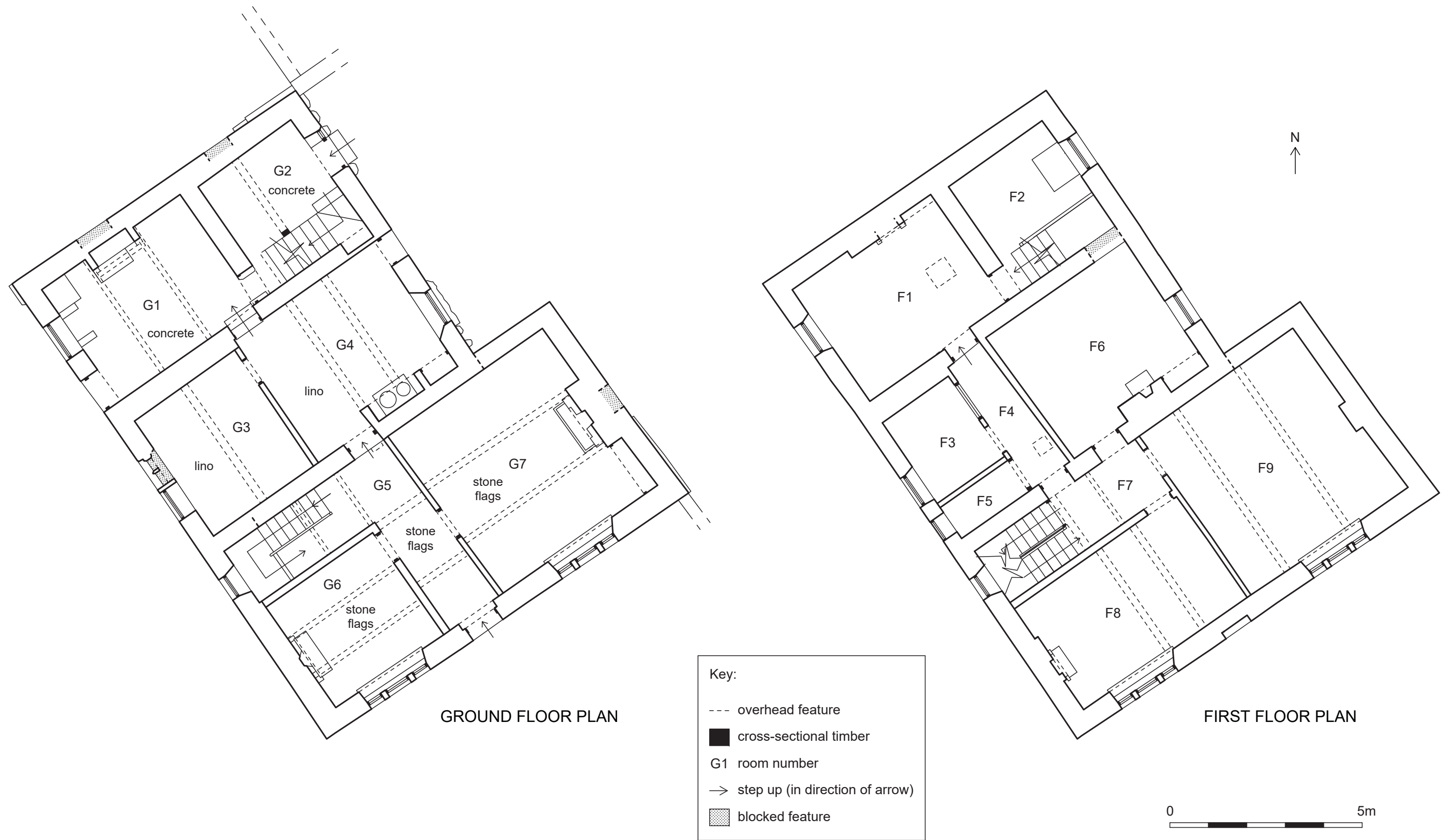


Figure 3: Ground and first floor plans of the farmhouse

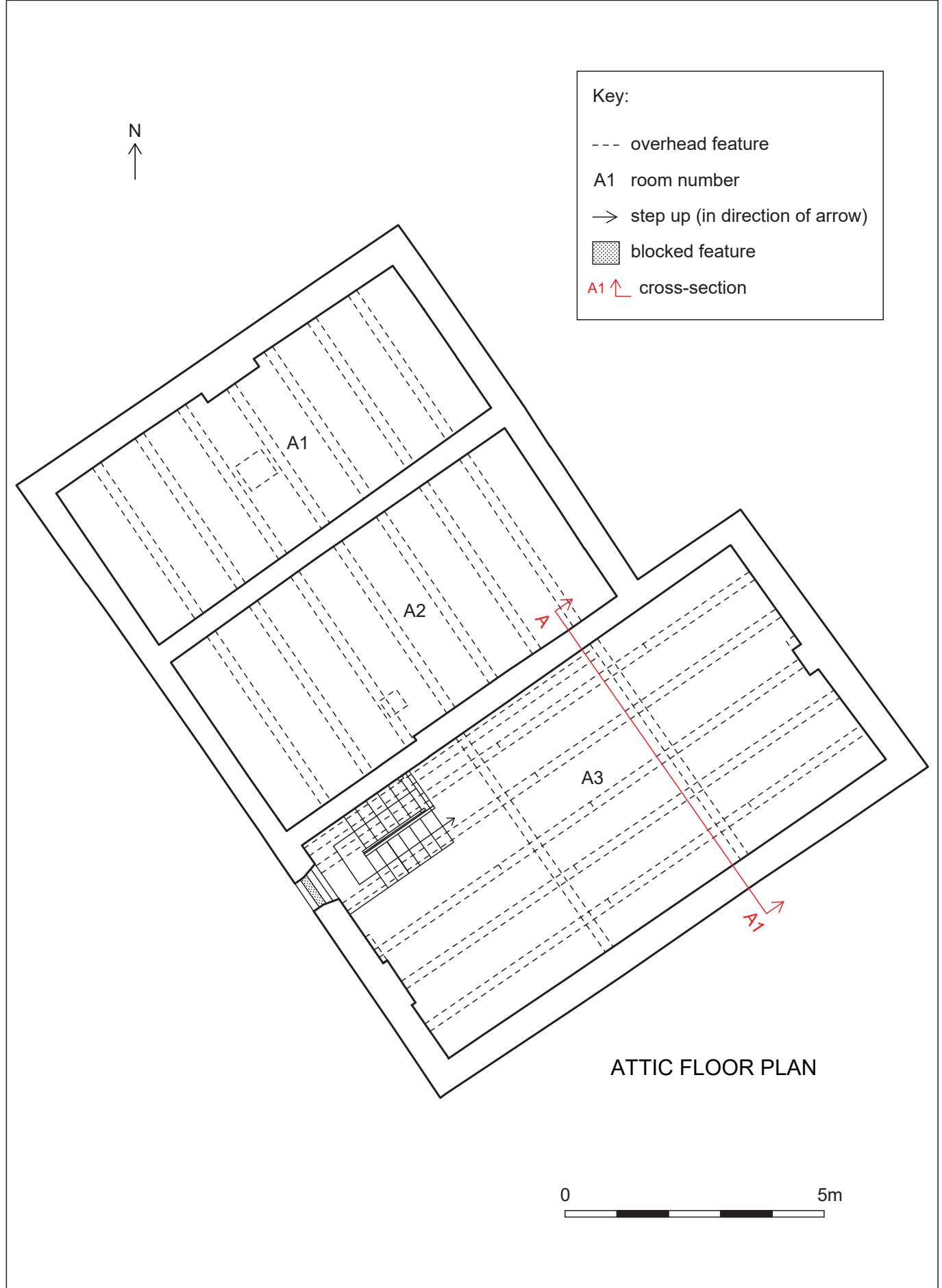
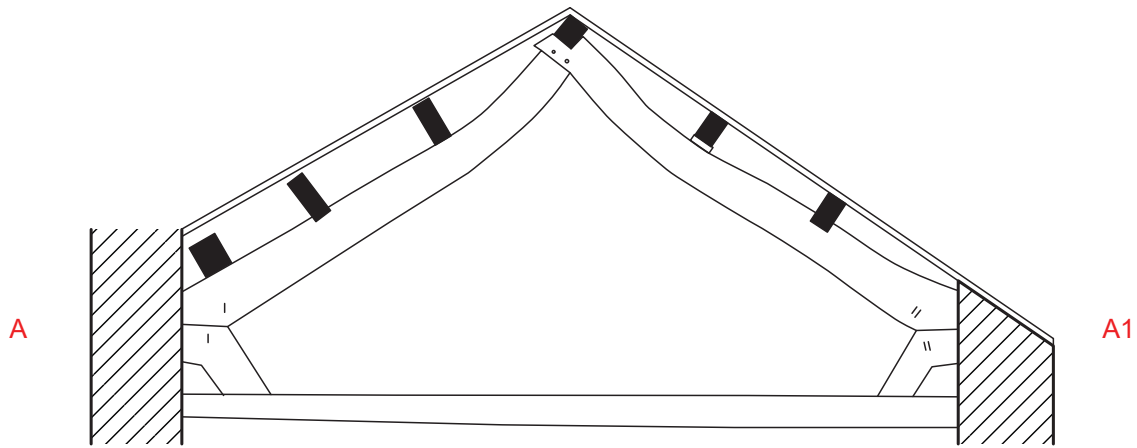


Figure 4: Attic floor plan of the farmhouse

CROSS-SECTION A-A1





Key:  cross-sectional wall  cross-sectional timber

Figure 5: Cross-section A-A1

4.5 Barn – Arrangement and Fabric

4.5.1 **Arrangement:** the main part of the barn is roughly rectangular, aligned north-east/south-west, and of two storeys, with a single storey section extending from the north-west side.

4.5.2 **Fabric:** it is mainly local yellow gritstone and has recently been repointed in lime. The roof on the main part is grey and purple slate with ceramic ridge tiles, possibly recently laid. The roof of the north-west extension has been removed, exposing the sawn purlins. There is some handmade brick in the lower section to the north-west.

4.6 Barn – External Detail

4.6.1 **North-east external elevation:** the main part of the north-east external elevation is the gable end (Plate 153). There are two sets of vents low down, made from groups of three ceramic drainpipes, and another row of three lower still on the north-west side and a group of four pipes at the apex. There is a small window low on the north-west side with quoined jambs and a heavy stone lintel, thin sill and remains of a six-light Yorkshire sliding sash casement (Plate 154). The elevation is extended to the north-west by a lower section (Plate 155). The south-east end fills an opening between the main part and section to the north-west (Plate 156). It is a very rough build, not pointed, and has a single pipe vent. The north-west end of the elevation is mostly plain. There are two courses of squared blocks at the top, possibly rebuilt, and a possible blocked opening in the centre (Plate 157).



Plate 153 (left): North-east external elevation of the barn, viewed from the north



Plate 154 (right): Window in the north-east external elevation of the barn, viewed from the north-east



Plate 155 (left): North-west side of the north-east external elevation of the barn, viewed from the north-east

Plate 156 (right): Infill in the north-east external elevation of the barn, viewed from the north-east



Plate 157: Blocked window in the north-east external elevation of the barn, viewed from the north-east

4.6.2 **North-west external elevation:** the lower part of the north-west external elevation is a gable, with large quoins at the ends and squarer blocks along the top, suggestive of rebuild (Plate 158 and Plate 159). The rear elevation of the main part of the barn is mostly plain, with two vents made from groups of three ceramic pipes (Plate 160).



Plate 158 (left): North-west gable of the north-west external elevation of the barn, viewed from the north
Plate 159 (right): North-west gable of the north-west external elevation of the barn, viewed from the west



Plate 160: Main part of the north-west external elevation of the barn, viewed from the north-west

4.6.3 **South-west external elevation:** the north-west side of the south-west elevation is lower (Plate 161) and there is a wide doorway below a heavy timber lintel clad with iron mesh and concrete (Plate 162). The north-west side is built in thin handmade brick (each 220mm by 120mm by 70mm) and there are concrete blocks above the quoined jambs of the doorway to the south-east (Plate 163). The south-west part of the lower section has a small window on the north-west side, with rough stone quoins, stone sill and lintel, and a basic single light casement (Plate 163). The doorway to the south-east has rough quoins to the north-west and is against the main building to the south-east (Plate 163). There are concrete blocks above the projecting concrete lintel and the door itself is a plain timber panel door. There are at least three reused stones in this section, one is ribbed and one has a wide groove scored into it (Plate 164 and Plate 165).



Plate 161 (left): General view of the south-west external elevation of the barn from the south-west
Plate 162 (right): North-west end of the south-west external elevation of the barn, viewed from the south-west



Plate 163: Centre of the south-west external elevation of the barn, viewed from the south-west



Plate 164 (left): Ribbed stone in the south-west external elevation of the barn, viewed from the south-west

Plate 165 (right): Grooved stone in the south-west external elevation of the barn, viewed from the south-west

4.6.4 The south-east end of the elevation is the gable end of the main part of the barn (Plate 166). There are four pipe vents at the apex, a row of three three-pipe vents below and a pair of pipe vents lower still. There are two doorways. The north-west doorway has a reused 16th to 17th century lintel with shallow arch and chamfered quoins (also reused) (Plate 167). The doorway to the south-east has a plainer, square lintel and chamfered quoins (also reused) (Plate 168). There are well-dressed quoins at both ends of the main part proper, with rilled edges, and a benchmark on the south-east side.



Plate 166: South-east end of the south-west external elevation of the barn, viewed from the south-west



Plate 167 (left): North-west door in the south-east end of the south-west external elevation of the barn, viewed from the south-west



Plate 168 (right): South-east door in the south-east end of the south-west external elevation of the barn, viewed from the south-west

4.6.5 **South-east external elevation:** there is a row of five single-pipe vents to ground floor level and remains of a central window, now partly collapsed, exposing an opening inside filled with timber (Plate 169 and Plate 170). There is a smaller window to the north-east, with a rough three-light casement and thin timber lintel, set into the top of an earlier blocked window (Plate 171). There are two windows in the upper floor, with timber sills and lintels and small quoins, covered by tongue and groove plank shutters on long hinges on pintles. There are well-finished quoins, with rilled edges, at each end.



Plate 169 (left): General view of the south-east external elevation of the barn, viewed from the south-east

Plate 170 (right): Centre window in the south-east external elevation of the barn, viewed from the south-east



Plate 171: North-east window in the south-east external elevation of the barn, viewed from the south-east

4.7 Barn – Internal Detail

4.7.1 **Ground floor Room 1 (G1):** this room has a cobbled floor partly obscured by debris (Plate 172), the walls are exposed stone, and it is open to the roof. It has a king post truss with angled braces, two sawn purlins per pitch and a ridge plank, supported by a single iron L-shaped girder (Plate 173 and Plate 174). The north-east elevation has a small opening in the centre, filled with concrete blocks, with a thin lintel and sill in stone (Plate 175). The south-east elevation has a possible butt joint down the centre in quoins (Plate 176) and small opening to the south-west of this. The south-west elevation has a wide doorway, with an iron I-beam lintel with concrete blocks over and bricks below at the north-west end (Plate 177). The north-west elevation is the plain gable, with two reused stones with square to

rectangular holes (Plate 178 and Plate 179). Timber is built in on the north-east side and also on the north-east elevation.



Plate 172 (left): Floor in G1 (barn), viewed from the south-west



Plate 173 (right): Truss in G1 (barn), viewed from the east



Plate 174 (left): Truss in G1 (barn), viewed from the west



Plate 175 (right): North-east elevation of G1 (barn), viewed from the south-west



Plate 176 (left): South-east elevation of G1 (barn), viewed from the north-west

Plate 177 (right): South-west elevation of G1 (barn), viewed from the north-east



Plate 178 (left): North-west elevation of G1 (barn), viewed from the south-east

Plate 179 (right): Reused stone in the north-west elevation of G1 (barn), viewed from the south-east

4.7.2 Ground floor Room 2 (G2): this room has a concrete floor that steps up on the north-east side (Plate 180). It is open to the roof, with a single roughly sawn purlin per pitch and double roof purlin (Plate 181). The walls are finished with whitewash. The north-east elevation has a two-pipe vent (Plate 182). The south-east elevation is plain. The south-west elevation has a doorway on the south-east side, with plain surround and split panel door. The north-west elevation has a small opening on the south-west side with a rough timber lintel (Plate 183).



Plate 180 (left): Floor in G2 (barn), viewed from the south-west

Plate 181 (right): Roof in G2 (barn), viewed from the south-west



Plate 182 (left): North-east elevation of G2 (barn), viewed from the south-west

Plate 183 (right): North-west elevation of G2 (barn), viewed from the south-east

4.7.3 **Ground floor Room 3 (G3):** this room has a concrete floor, stepped up in the centre (with brick exposed below on the north-east side) for concrete and timber stall divisions (Plate 184 and Plate 185). There are three concrete divisions clad round timber posts and one all timber division. All of the timbers are sawn. The ceiling comprises a row of sawn joists (Plate 186), north-west/south-east, on a north-east/south-west beam on the stall posts, and there are remains of the sawn board floorboards on top. There is a long timber trough along all of the north-west side beyond the stalls (Plate 187). The walls are all exposed stone, although the lower part is covered with concrete to the north-east, south-east and south-west.

4.7.4 The north-east elevation has a window on the north-west side with a sawn timber lintel and stone sill and there is a three-pipe vent to the south-east. There is timber boxing in the south corner around a pipe (Plate 188). The south-east elevation has a narrow three-light window, set within an originally much larger window, with an alcove below built of machine-made brick and incorporating a metal drinking trough (Plate 189 and Plate 190). The bricks are frogged and marked "ACCRINGTON NORI". There are two small alcoves to the south-west of that in a reused dress stone, with beaded arched tops and

moulded entablature over on scrolled brackets (Plate 191). The window to the south-west is boarded over and has a stone sill and then there are further pipe vents to the end of the elevation. The south-west elevation has a door at each end, both with sawn timber lintels, with remains of a plank and batten door to the south-east and original door to the north-west with split top. The north-west elevation is essentially plain.



Plate 184 (left): Floor in G3 (barn), viewed from the south-west

Plate 185 (right): Stairs in G3 (barn), viewed from the west



Plate 186 (left): Ceiling in G3 (barn), viewed from the east

Plate 187 (right): Through passage to the north-west in G3 (barn), viewed from the north-east



Plate 188 (left): North-east elevation of G3 (barn), viewed from the south-west



Plate 189 (right): South-east elevation windows in G3 (barn), viewed from the north-west



Plate 190 (left): North-east window in the south-east elevation of the barn (G3), viewed from the west



Plate 191 (right): South-east elevation alcoves in G3 (barn), viewed from the west

4.7.5 **Upper-level Room 1 (F1)**: this room was not accessible and was viewed from a ladder. It has remains of a board and sheet floor and is open to the roof with a single sawn purlin per pitch and ridge and single king post truss with a splayed base and bolted to the tie beam (Plate 192 and Plate 193). The walls are exposed stone with heavy pointing. There are pipe vents to the north-east, north-west and south-west, and two doors/windows to the south-east with sawn timber lintels and dressed stone sills (Plate 194 and Plate 195).



Plate 192 (left): Floor in F1 (barn), viewed from the east



Plate 193 (right): Truss in F1 (barn), viewed from the east



Plate 194 (left): South-west side of F1 (barn), viewed from the north-east



Plate 195 (right): South-east side of F1 (barn), viewed from the north

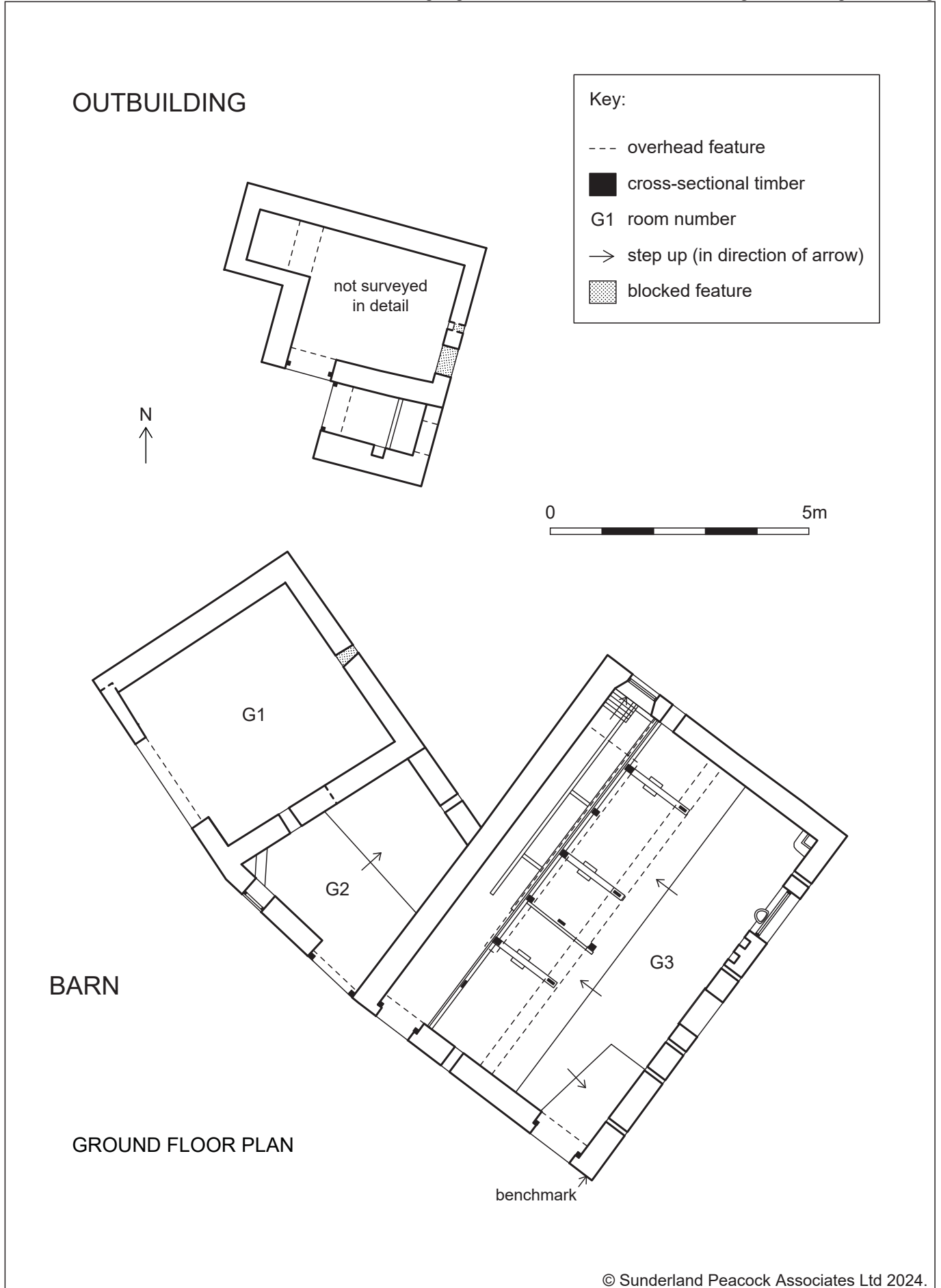
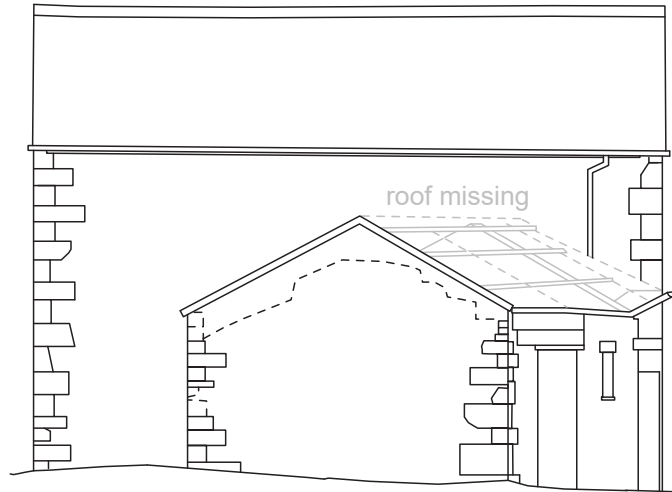


Figure 6: Ground floor plan of the barn and outbuilding

BARN

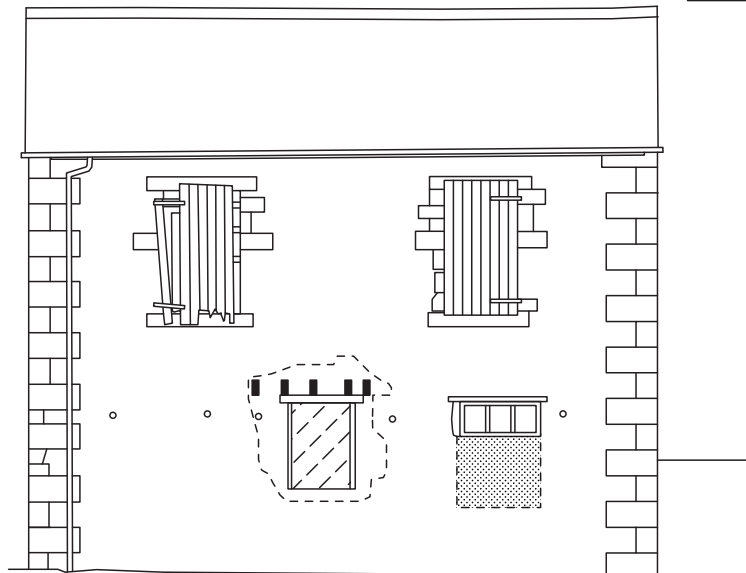


NORTH-WEST EXTERNAL ELEVATION



Key:

- edge uncertain
- ▨ cross-sectional wall
- ▤ blocked feature
- ▧ boarded over


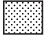



SOUTH-EAST EXTERNAL ELEVATION

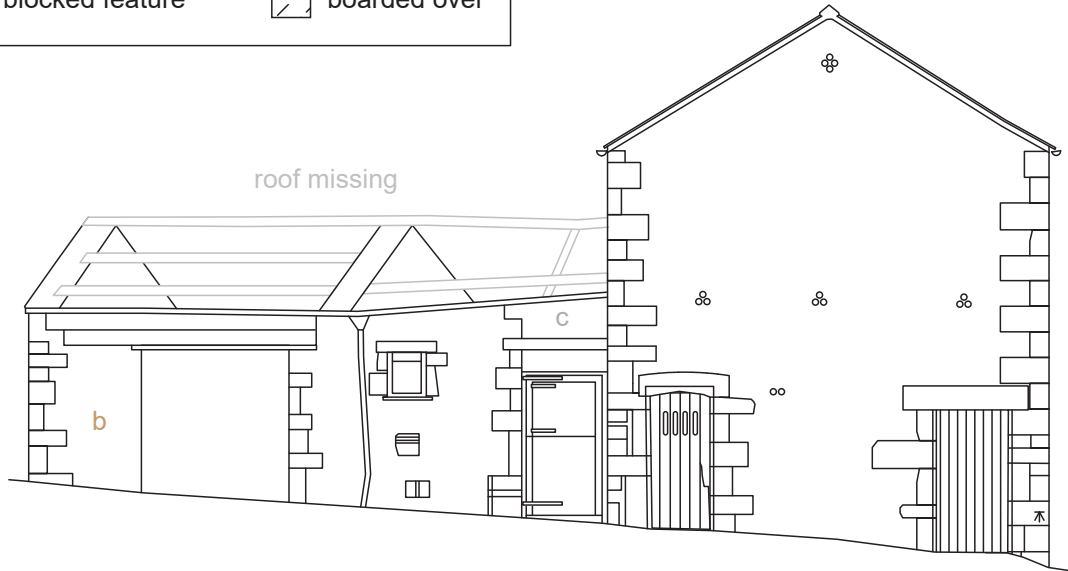
© Sunderland Peacock Associates Ltd 2024.

Figure 7: North-west and south-east external elevations of the barn

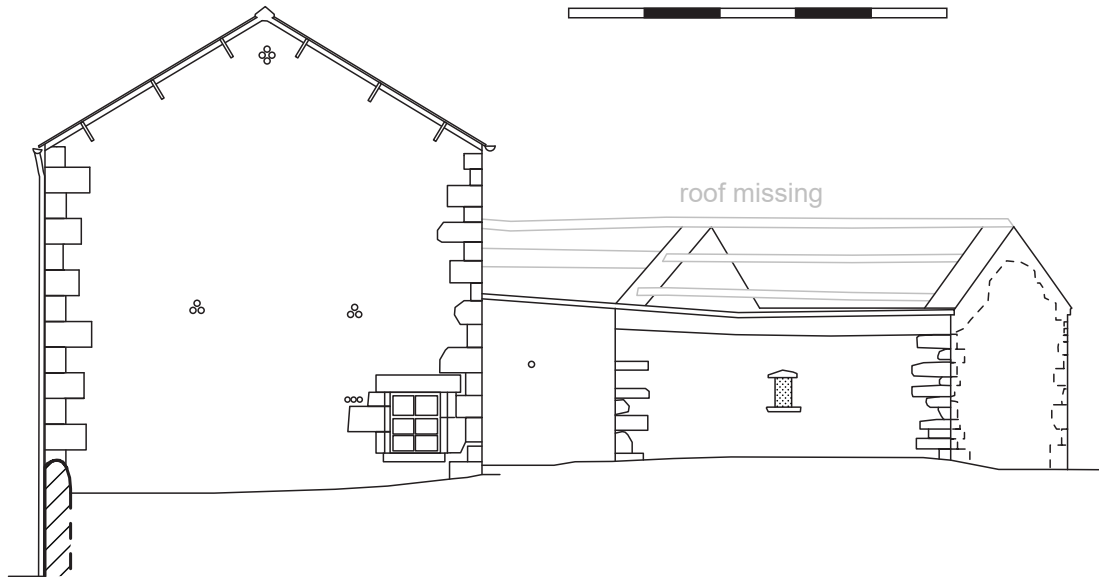
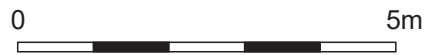
Key:

---	edge uncertain	b	brick
	cross-sectional wall	c	concrete
	blocked feature		boarded over

BARN



SOUTH-WEST EXTERNAL ELEVATION



NORTH-EAST EXTERNAL ELEVATION

© Sunderland Peacock Associates Ltd 2024.

Client: Clare Hargreaves-Norris and Darren Norris

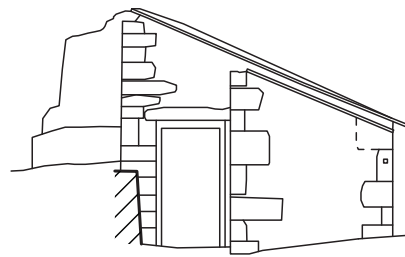
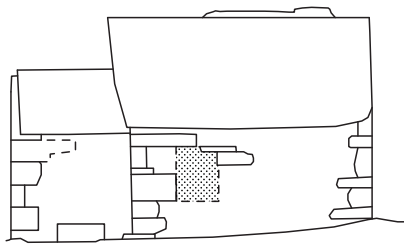
© Greenlane Archaeology Ltd, November 2025

Figure 8: South-west and north-east external elevations of the barn

OUTBUILDING

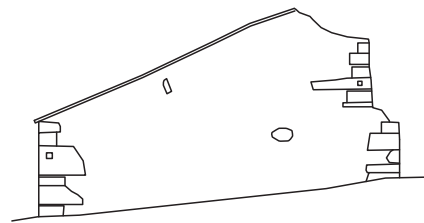
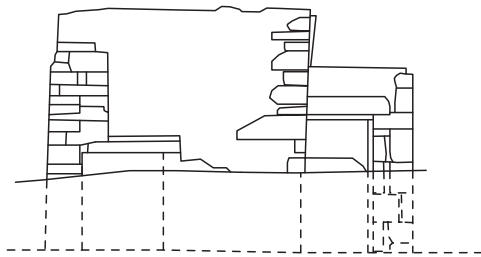
Key:

- edge uncertain
- ▨ cross-sectional wall
- ▩ blocked feature



SOUTH-EAST EXTERNAL ELEVATION

SOUTH-WEST EXTERNAL ELEVATION



NORTH-WEST EXTERNAL ELEVATION

NORTH-EAST EXTERNAL ELEVATION

© Sunderland Peacock Associates Ltd 2024.

Figure 9: External elevations of the outbuilding

4.8 Outbuildings – Arrangement and Fabric

4.8.1 **Arrangement:** this comprised a small, irregularly L-shaped plan of a single storey. Internally it was divided into one single large room, and a smaller second room on the south side.

4.8.2 **Fabric:** as with the rest of the buildings on site, it was constructed in the local yellow gritstone with the roof finished in stone flags and

4.9 Outbuilding north of the barn – External Detail

4.9.1 **East external elevation:** this comprised the main section on the north side, finished with quoins and with a small blocked up opening on the south side with a projecting stone sill (Plate 196). The section to the west of this was evidently a later addition, butting against it, with a low opening at ground level and quoined end.



Plate 196: East external elevation of the outbuilding, viewed from the east

4.9.2 **North external elevation:** this was essentially plain, and of a very rough build of small stones in rough courses, with quoins at the east side and a stepping out lower west side (Plate 197).



Plate 197: North external elevation of the outbuilding, viewed from the north

4.9.3 **West external elevation:** this was also largely plain, but with a projecting wall on the north side a opening blocked by rubble, and a step on the south side with a small doorway with the remains of a timber surround (Plate 198 and Plate 199). Both of the openings have thin stone lintels.



Plate 198 (left): West external elevation of the outbuilding, viewed from the west



Plate 199 (right): West external elevation of the outbuilding, viewed from the west

4.9.4 **South external elevation:** this has a doorway on the north side, with a thin stone lintel and the remains of a timber surround, and quoined corners (Plate 200). The south side is clearly a later addition, again with quoined corners (Plate 201).



Plate 200 (left): South external elevation of the outbuilding, viewed from the south



Plate 201 (right): South external elevation of the outbuilding, viewed from the south-east

4.10 Outbuilding north of the barn – Internal Detail

4.10.1 **Ground floor Room 1 (G1):** this comprises a small room on the south side, the floor covered by debris and with a low stone division on the south side, presumably for an outside toilet. The walls are exposed stone finished with traces of plaster and limewash, with a low opening to the south and a doorway to the north (Plate 202). It is open to the monopitch roof, which is supported by sawn rafters.



Plate 202: South room of the outbuilding, viewed from the west

4.10.2 **Ground floor Room 2 (G2):** the floor is obscured by debris and it is open to the monopitch roof, which is supported by sawn purlins and rafters (Plate 203). The walls are finished with rough limewash and there is a low alcove in the north-west corner with a timber lintel (Plate 204) and a doorway to the south-east.



Plate 203 (left): North side of the north room of the outbuilding, viewed from the west

Plate 204 (right): Alcove to the west side of the north room of the outbuilding, viewed from the south-east

4.11 Outbuilding south-west of farmhouse

4.11.1 This comprises a single-storey structure orientated north-west/south-east. It is finished with scored render externally and has a corrugated concrete sheet roof (Plate 205). There are single doorways to the north-west and south-east (Plate 205 and Plate 207), a double doorway to the north-east and rows of windows, plus a single window to the south-east and a probable blocked one to the north-west (Plate 206).



Plate 205 (left): General view of the outbuilding from the north-west



Plate 206 (right): General view of the outbuilding from the north



Plate 207: The south-east elevation of the outbuilding, viewed from the south-east

5. Discussion

5.1 Introduction

5.1.1 While it is apparent that the site of Written Stone Farm was occupied from at least the 17th century, all of the current buildings on the site, including those recorded as part of this project are likely to be late 18th century in date at the earliest. There are, however, numerous pieces of reused stone from an earlier building or buildings on the site, some of which are incorporated into the farmhouse and the barn.

5.2 Phasing

5.2.1 **Introduction:** the documentary evidence combined with the results of the building recording have allowed five phases of development to be determined (Figure 10).

5.2.2 **Phase 1 (17th century):** there are a number of probable 17th century architectural elements reused within the farmhouse, most visibly the mullion window in the south-west external elevation and the small section in the north-east. Whether the south-west was ever actually used as a window is not at present evident, but it is clearly not in an original position and is not complete. Some of the roof timbers within the farmhouse, particularly the purlins are also clearly reused and could also belong to this period, as might the piece of reused timber framing and reused pieces incorporated into the stairs. Within the barn, the carved stone double alcoves are clearly also reused and have come from a relatively high-status structure. Their original date and purpose are uncertain, but they are probably also late 17th or even early 18th century in date and may have formed part of an elaborate overmantle for a fireplace (see Alcock and Hall 2001, 40 for example). All of these elements undoubtedly originated in an earlier house of some status, most probably that occupied by the Ratcliffe family, which otherwise does not survive.

5.2.3 **Phase 2 (early 18th century):** it is apparent from the floor plan and the evidence for the raising of the roofline, that the rear (north-west) part of the house originally comprised a double-pile house with two, relatively low, floors and an attic. This corresponds with the space made up by Rooms G1-G4 and F1-F6, although some of this represents later sub-divisions whereas the main walls were constructed from stone and extended through the ground and first floors and the main north-east/south-west division continued to the roof. It is not clear where the original front door for this element was as there are central doorways to the south-east (between G5 and G4) and to the south-west and north-east, but it seems likely it was to the south-east, with the plank wall dividing G3 and G4 an original partition forming one side of a hallway. It is also not clear where the original staircase was during this phase, although it seems likely to have been between Rooms G2 and F2, where a later staircase still exists. Double pile plan houses of this type are relatively common in the wider area; similar examples have been recorded in a number of locations across South Cumbria and North Lancashire (Greenlane Archaeology, 2006; 2011; 2012a; 2012b; 2019; 2020) and these have often been found to be of early 18th century date, despite the general opinion that such buildings are more typically mid-19th century (Brunskill 2002, 81-83). In fact, it is clear that, in several cases, they included a number of features that would have seemed remarkably archaic even in the early 18th century, and the farmhouse at Written Stone Farm is no exception, as the simple plank wall between Rooms G3 and G4 demonstrates, or the very basic plank door on strap hinges between Rooms F4 and F7). That door is a remarkable demonstration of the change between Phases 2 and 3, with the north-west (Phase 2) side clad with false panelling on the south-east (Phase 3) side. The north-east part of the two blocked windows in the north-west elevation is also fitting with a double pile plan (the south-west of these is probably not actually a window as it backs onto a fireplace, although the evidence for a possible lower level of rebuild might suggest these both actually belong to Phase 1). The butt joint visible on the north-west side of Room G5 (against the staircase) probably also represents the jamb of a window in the Phase 2 external wall.

5.2.4 **Phase 3 (late 18th century):** the south-west front of house clearly originated in the late 18th century. A very worn datestone in the front of the house confirms the date, reading '17[??]' with the initials 'WE' above; the rest is illegible. However, a hopper above this is dated 1784 and has the initials 'W B E', thought to correspond to William and Ellen Bourn (see Section 3.2.3). This section of the building was clearly added to form a new decorative and symmetrical Palladian-style façade to the

house, essentially hiding the original property and incorporating it to the rear, and raising it in height to match. The new front essentially comprised two large ground floor reception rooms (Rooms G6 and G7) connected to a new staircase via a central hallway (Room G5) with two large bedrooms on the first floor (Rooms F8 and F9), with access to a large attic room above (Room A3). The small blocked aperture at the base of the north-east end gable suggests that there may have been a small cellar, but no evidence for this was present internally and so it is perhaps more likely that this actually connected to an ash pit designed to allow the fireplace in Room G7 to be cleared and the chimney swept from the outside. There are several datable features within this section, which broadly correspond with the date of 1784; the L-shaped hinges and panelled doors are typically of early 18th century (Alcock and Hall 2002, 17-18 and 25), while the simple square balusters of the stairs and handrail are more common towards the end of the 18th century and into the early 19th century (Burton 2001, 38-42). The large fitted cupboards in Room G7, which have similar early hinges, are also almost certainly original to this period as is the moulded stone fire surround in Room F8 (see Burton and Porten 2000).

5.2.5 Phase 4 (early 19th century): specific changes to the farmhouse in the 19th century are less evident, but it seems likely that the back staircase was added at this time, if not earlier, as it evidently cut through the floorboards and blocked a possible opening between Rooms G2 and G4 and possibly F2 and F6, although it is unlikely that the latter had survived the changes of Phase 3. The census returns suggest that the property was sub-divided into two separate dwellings by at least 1841, which would have necessitated an additional staircase. By at least 1837 the south-eastern part of the barn had been constructed (corresponding with Room G3). In fact, it was evidently a small stable or cowhouse rather than a barn, with stalls along the north-west side and separate doors to the south-west providing access for the animals and to the feed channel, and ventilation throughout. The use of ceramic pipes for the vents again indicates a 19th century date of construction.

5.2.6 Phase 5 (late 19th – early 20th century): while late 19th century changes in the farmhouse are less evident and probably less extensive, the barn was clearly extended to reach its current footprint by the end of the 19th century, with the addition of elements comprising Rooms G1 and G2. These most likely provided additional housing for farm vehicles or possibly vehicles or machinery, with wide doorways to the south-west and north-east, although the possible butt joint in the wall between suggests it might have been built in several phases. The smaller outbuilding to the north was also added during this phase, and probably comprised a pigsty with a later privy added to the south side. Changes in this phase also led to the addition of new fireplace inserts and surrounds; the earliest are perhaps late 19th (in Room F6; while that in Room F8 has an insert of similar date), while those in Rooms G6 and G7 are early 20th century. The exception the fireplace in Room F1, which is probably original to Phase 2. In general, early 20th century within the house were almost all damaging; on the first-floor new partition walls were added to form a bathroom, toilet, and associated corridor (Rooms F3-F5), with a new window inserted through the south-west wall of Room F5. The outbuilding to the south-west of the house was also added in this phase, clearly after 1932; its original function is unclear. There were undoubtedly some minor alterations to the barn associated with the enlargement of the wide door to the south-west side and the blocking of the wide doorway on the north-east side, presumably as the needs for different types of farm equipment changed.

5.3 Conclusion

5.3.1 While the site plainly has evidence for a structure of some size and importance being present there from at least the 17th century, it seems apparent that it was completely demolished by the 18th century with elements of it reused in the present buildings thereafter. The form of the earliest surviving part of the current house in fact represents an interesting example of a double pile house of early 18th century date – one of a number of examples recently recorded and adding to a body of data that demonstrates that these are earlier than is generally accepted. These phases of development reflect the relative status of the owners during the early part of the sites use, when it perhaps had more of a gentry level status. The subsequent development of the building demonstrates how it developed into more of a working farm during the 19th and 20th centuries, split into at least two dwellings for some of that time.

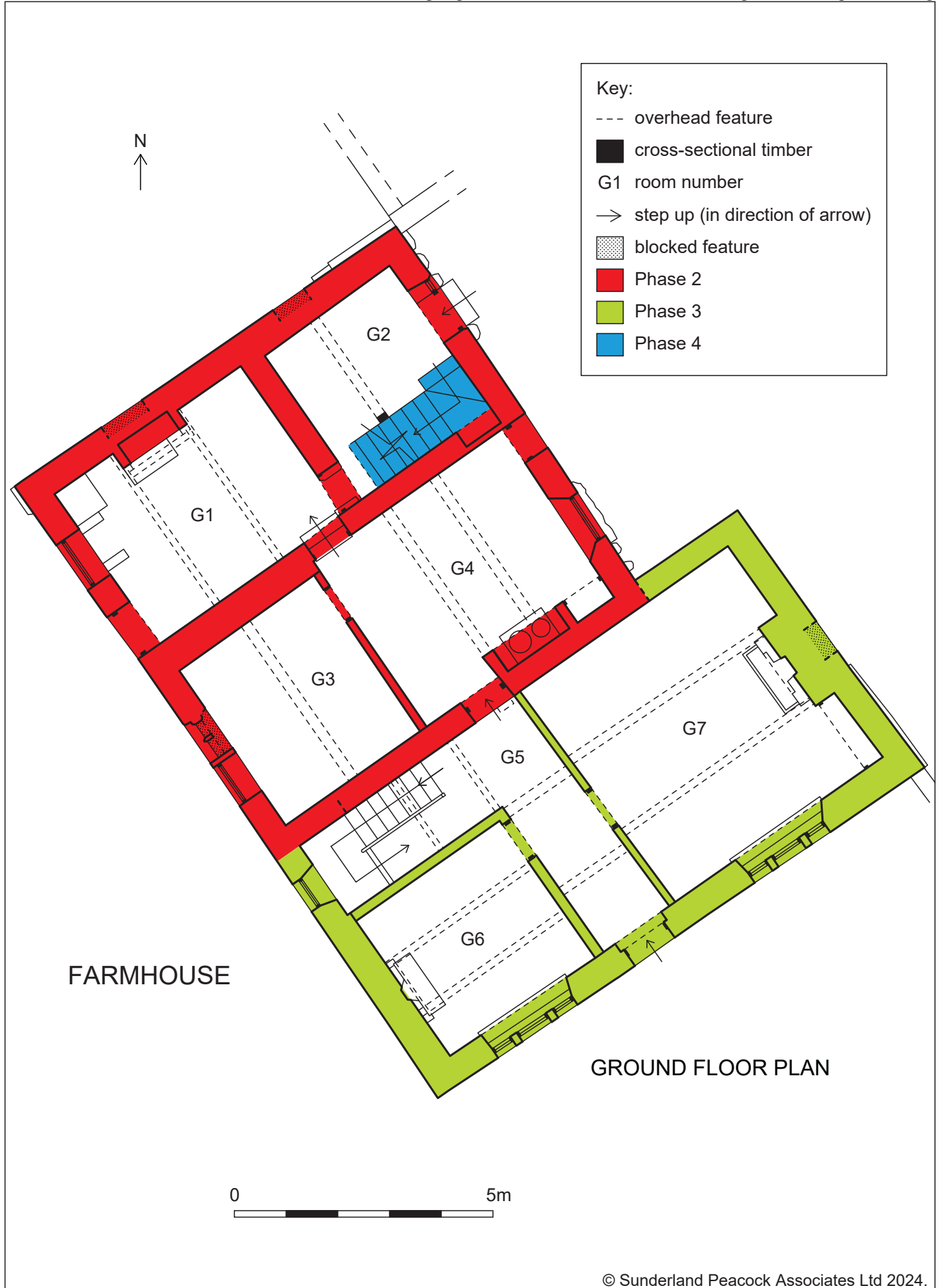


Figure 10: Phase plan showing the development of the farmhouse

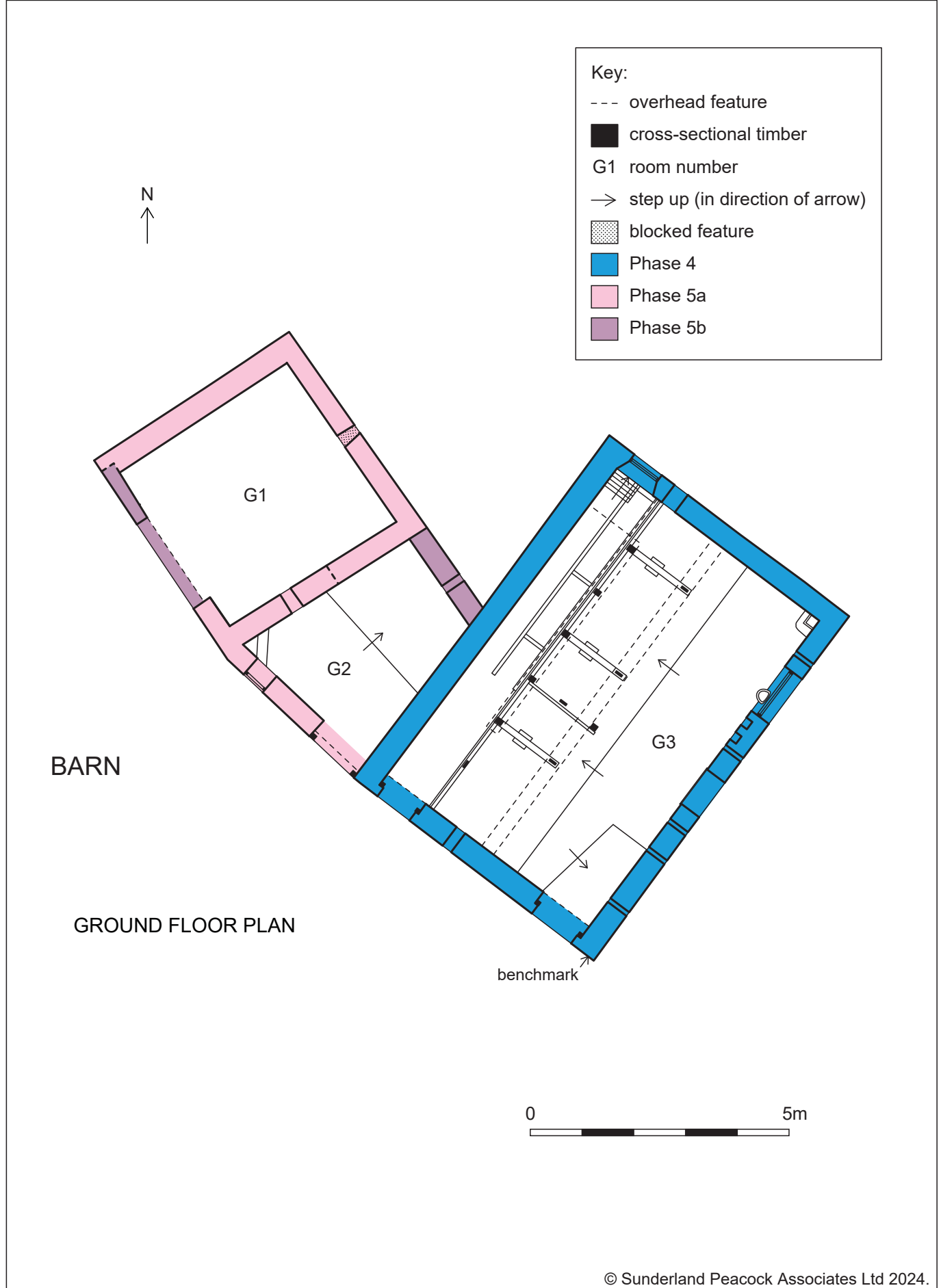


Figure 11: Phase plan showing the development of the barn

6. Bibliography

6.1 Primary and Cartographic Sources

HO107/Piece 505/Book 10/District 4/Folio 25/Page 17, 1841 *Census*

HO107/Piece 2268/Folio 412/Page 14, 1851 *Census*

NA IR 29/18/101, 1838 *Tithe Apportionment of Dilworth (Township in the Parish of Ribchester), Lancashire*

NA IR 30/18/101, 1837 *Map of the Township of Dilworth in the Parish of Ribchester in the County Palatine of Lancaster*

Ordnance Survey, 1847 *Lancashire Sheet 54*, 1:10,560, surveyed in 1844

Ordnance Survey, 1895 *Lancashire Sheet LIV.N.W.*, 1:10,560, resurveyed in 1891-1892

Ordnance Survey, 1912 *Lancashire Sheet LIV.5.*, 1:2,500, resurveyed in 1892, revised in 1910

Ordnance Survey, 1932 *Lancashire Sheet LIV.5.*, 1:2,500, resurveyed in 1892, revised in 1930

Ordnance Survey, 2008 *West Pennine Moors: Blackburn, Darwen & Accrington, 287*, 1:25,000

RG 9/Piece 3142/Folio 53/Page 9, 1861 *Census*

RG10/Piece 4216/Folio 74/Page 7, 1871 *Census*

RG11/Piece 4245/Folio 91/Page 16, 1881 *Census*

RG12/Piece 3446/Folio 79/Page 21-22, 1891 *Census*

RG13/Piece 3959/Folio 81/Page 10-11, 1901 *Census*

RG78/Piece 1450, 1911 *Census*

Yates, W, 1786 *The County Palatine of Lancaster*

6.2 Secondary Sources

Alcock, NW, and Hall, L, 2002 *Fixtures and Fittings in Dated Houses 1567-1763*, CBA practical handbook in archaeology **11**, 2nd edn, York

Brunskill, RW, 2007 *Traditional Farm Buildings of Britain and their Conservation*, London

Burton, N, 2001 *Georgian Stairs*, London

Burton, N, and Porten, L, 2000 *Georgian Chimneypieces*, London

Chartered Institute for Archaeologists (CIfA), 2014a *Standards and Guidance for the Archaeological Investigation and Recording of Standing Buildings or Structures*, revised edn, Reading

CIfA, 2014b *Standard and Guidance for Archaeological Desk-Based Assessment*, revised edn, Reading

CIfA, 2014c *Standard and Guidance for the Creation, Compilation, Transfer and Deposition of Archaeological Archives*, revised edn, Reading

Countryside Commission, 1998 *Countryside Character, Volume 2: North West*, Cheltenham

Greenlane Archaeology, 2006 *Black Beck Hall, Ayside, Cumbria: Archaeological Building Recording*, unpubl rep

Greenlane Archaeology, 2011 *House at Slackwood Farm, Siverdale, Lancashire: Archaeological Building Recording*, unpubl rep

Greenlane Archaeology, 2012a *King's Arms, Cartmel, Cumbria: Archaeological Building Recording*, unpubl rep

Greenlane Archaeology, 2012b *Moor House Farm, Broughton Beck, Ulverston: Archaeological Building Recording*, unpubl rep

Greenlane Archaeology, 2019 *Crown Inn, 45 Market Street, Flookburgh, Cumbria: Archaeological Building Recording*, unpubl rep

Greenlane Archaeology, 2020 *Town Head, Newby Bridge, Cumbria: Archaeological Building Recording*, unpubl rep

Greenlane Archaeology, 2025 *Written Stone Farm, Written Stone Lane, Longridge, Preston, Lancashire: Archaeological Building Recording*, unpubl rep

Historic England, 2016 *Understanding Historic Buildings: A Guide to Good Recording Practice*, no location

Historic England, 2025a *The Written Stone*, <https://historicengland.org.uk/listing/the-list/list-entry/1147440?section=official-list-entry>

Historic England, 2025b *Written Stone Farmhouse*, <https://historicengland.org.uk/listing/the-list/list-entry/1362273?section=official-list-entry>

Lancashire Parish Clerk Online, nd *Marriages at St Wilfrid in the Parish of Ribchester*, <https://www.lan-opc.org.uk/Ribchester/stwilfrid/index.html>

Ratledge, D, 2018 *The Supposed Roman Road from Ribchester to Lancaster via Street, Margary Number: 704*, <https://www.romanroads.org/gazetteer/M704.htm>

Smith, TC, 1888 *A History of Longridge*, Preston

Sunderland Peacock and Associates, 2024 *Barn at Written Stone Farm, Longridge, Lancashire: Historic Buildings Appraisal*, unpubl rep

Appendix 1: Census information 1841-1911

1841 Census (HO107/Piece 505/Book 10/District 4/Folio 25/Page 17 1841)

Place	Name	Age		Profession	Whether born in same county
Written Stone	Thomas Jump	75		Independent means	Yes
	Nanny Jump	68		Independent means	Yes
Written Stone	William Bourn	30		Farmer	Yes
	Alice Bourn	30		-	Yes
	Ann Chadwick	16		Female Servant	Yes
	James Wearing	17		Male Servant	Yes

1851 Census (HO107/Piece 2268/Folio 412/Page 14 1851)

Place	Name	Age	Relationship to head	Profession	Place of birth
Written Stone	Elizabeth Bourn	65	Head	Farmer of 40 acres	Yorkshire, Dinkling Green Bowland
	Margret Bourn	36	Daughter	Employed at home	Lancashire, Dilworth
	Richard Highton	59	Servant	Agricultural labourer	Lancashire, Chagley [Chaigley?]

1861 Census (RG 9/Piece 3142/Folio 53/Page 9 1861)

Place	Name	Age	Relationship to head	Profession	Place of birth
1 Written Stone	John Bourn	76	Head	Farmer of 40 acres	Lancashire, Dilworth
	Margreat Bourn	47	Daughter	-	Lancashire, Dilworth
2 Written Stone Cottage	Uninhabited	-	-	-	-

1871 Census (RG10/Piece 4216/Folio 74/Page 7 1871)

Place	Name	Age	Relationship to head	Profession	Place of birth
Written Stone	Robert Bourn	54	Head	Farmer of 38 acres	Lancashire, Ribchester
	Ellen Bourn	52	Wife	Farmer's wife	Lancashire, Blackburn
	Elizabeth Bourn	21	Daughter	-	Lancashire, Mytton
	Robert Bourn	19	Son	Grocer	Lancashire, Mytton
	Thomas Bourn	17	Son	Farmer's son	Lancashire, Mytton
	William Bourn	14	Grandson	Orphan	Lancashire, Mytton

1881 Census (RG11/Piece 4245/Folio 91/Page 16 1881)

Place	Name	Age	Relationship to head	Profession	Place of birth
Written Stone	Robert Bourn	64	Head	Farmer of 28 acres Employing 1 servant	Lancashire, Hothersall
	Ellen Bourn	62	Wife	Farmer's wife	Lancashire, Dinkley

Place	Name	Age	Relationship to head	Profession	Place of birth
	Elizabeth Bourn	31	Daughter	Farmer's daughter	Lancashire, Aighton
	Margaret Bourn	67	Sister	Annuitant	Lancashire, Dilworth
	John Bradley	16	Servant	Farm Servant (Indoor)	Lancashire, Bailey

1891 Census (RG12/Piece 3446/Folio 79/Page 21 1891)

Place	Name	Age	Relationship to head	Profession	Place of birth
Written Stone (Cottam House Farm)	Sarah Wallbank	48	Head	Farmer	Lancashire, Chipping
	Alfred Wallbank	22	Son	Cotton-weaver	Lancashire, Dilworth
	Elizabeth Wallbank	20	Daughter	Cotton-weaver	Lancashire, Thornley
	William Wallbank	19	Son	Cotton-weaver	Lancashire, Thornley
	Mary Wallbank	18	Daughter	Cotton-weaver	Lancashire, Thornley
	Margaret Wallbank	16	Daughter	Cotton-weaver	Lancashire, Thornley
	Sarah Jane Wallbank	14	Daughter	Assistant on farm	Lancashire, Dilworth
	Henry Wallbank	12	Son	Scholar	Lancashire, Dilworth
	Alice Wallbank	10	Daughter	Scholar	Lancashire, Dilworth
	Maria Wallbank	8	Daughter	Scholar	Lancashire, Dilworth
Written Stone	Richard Fare	36	Head	Farmer	Lancashire, Broughton
	Elizabeth Fare	39	Wife		Lancashire, Balderstone
	Emma Fare	11	Boarder	Scholar	Lancashire, Wigan
	William Davies	16	Servant	Farm Servant	Lancashire, Garstang

1901 Census (RG13/Piece 3959/Folio 81/Page 10-11 1901)

Place	Name	Age	Relationship to head	Profession	Place of birth
Writtenstone	Richard Fare	46	Head	Farmer	Lancashire, Broughton
	Elizabeth Fare	48	Wife		Lancashire, Osbaldestone
	Emma Fare	20	Daughter	Farmer's Daughter	Lancashire, Barrow
	Thomas Fare	80	Father	Living on own means	Lancashire, Poulton le Fylde
	Sussanah Fare	76	Mother	Living on own means	Westmorland, Milnthorpe
	Samuel Worthington	12	Boarder	Scholar	Lancashire, Preston
	Rachel Worthington	4	Boarder	Scholar	Lancashire, Preston
	George Morton	21	Servant	Cow man	Lancashire, Accrington

1911 Census Summary Book (RG78/Piece 1450 1911)

Place	Name	Age	Relationship to head	Profession	Place of birth
Writtenstone	Mr Dagger				
	+1 Male				
	+1 Female				

Appendix 2: Listed Building Information Summary

List Entry Name: The Written Stone (Historic England 2025a)

Heritage Category: Listed Building

Grade: II

List Entry Number: 1147440

Date first listed: 22-Nov-1983

Statutory Address: The Written Stone, Written Stone Lane

County: Lancashire

District: Ribble Valley (District Authority)

Parish: Longridge

National Grid Reference: SD 62617 37902

Details: inscribed stone, 1655. Sandstone. About eight feet long, two feet wide and 18 inches deep. The following is written in incised letters: 'RAVFFE RADCLIFFE LAID THIS STONE TO LYE FOR EVER AD 1655'.

For legends about the stone see Smith, TC, 1888 *A History of Longridge*, Preston, pp27-30.

List Entry Name: Written Stone Farmhouse (Historic England 2025b)

Heritage Category: Listed Building

Grade: II

List Entry Number: 1362273

Date first listed: 22-Nov-1983

Statutory Address: Written Stone Farmhouse, Written Stone Lane

County: Lancashire

District: Ribble Valley (District Authority)

Parish: Longridge

National Grid Reference: SD 62585 37882

Details: house, probably late 18th century. Sandstone rubble with slate roof. L-plan. Two storeys. Façade of three bays with chamfered quoins and windows of three lights with square stone mullions and plain stone surrounds, except for the central window on the first floor which has a plain stone surround with semi-circular head. The door has a plain stone surround with a semi-circular head.

Appendix 3: Photograph Record Index

Project name:		Written Stone Farm, Written Stone Lane, Longridge, Lancashire: Archaeological Building Recording			Film type:	Digital
Project Code:		G1649	Site Code:	WS25	Film No.:	1
Shot No.	Area	From	Description	Scale size	Initial/date	
1	Barn	N	North-east external elevation, south-east side	2m	DWE 23/09/2025	
2	Barn	NE	North-east external elevation, window	2m	DWE 23/09/2025	
3	Barn	E	North-east external elevation, south-east side	2m	DWE 23/09/2025	
4	Barn	NE	North-east external elevation, north-west side	2m	DWE 23/09/2025	
5	Barn	NE	North-east external elevation, blocked	2m	DWE 23/09/2025	
6	Barn	NE	North-east external elevation, blocked	2m	DWE 23/09/2025	
7	Barn	N	North-west external elevation, main part	2m	DWE 23/09/2025	
8	Barn	NW	North-west external elevation, main part	2m	DWE 23/09/2025	
9	Barn	W	North-west external elevation, north-west gable	2m	DWE 23/09/2025	
10	Barn	N	North-west external elevation, north-west gable	2m	DWE 23/09/2025	
11	Barn	SW	South-west external elevation	2m	DWE 23/09/2025	
12	Barn	SW	South-west external elevation, north-west end	2m	DWE 23/09/2025	
13	Barn	SW	South-west external elevation, north-west end	2m	DWE 23/09/2025	
14	Barn	SW	South-west external elevation, south-east end	2m	DWE 23/09/2025	
15	Barn	SW	South-west external elevation, north-west door	2m	DWE 23/09/2025	
16	Barn	SW	South-west external elevation, south-east door	2m	DWE 23/09/2025	
17	Barn	SE	South-east external elevation	2m	DWE 23/09/2025	
18	Barn	E	South-east external elevation	2m	DWE 23/09/2025	
19	Barn	SE	South-east external elevation, north-east window	2m	DWE 23/09/2025	
20	Barn	SE	South-east external elevation, centre window	2m	DWE 23/09/2025	
21	Barn	SW	South-west external elevation, ribbed stone	0.1m	DWE 23/09/2025	
22	Barn	SW	South-west external elevation, grooved stone	0.1m	DWE 23/09/2025	
23	Barn	SW	G1 floor	2m	DWE 23/09/2025	
24	Barn	E	G1 truss	–	DWE 23/09/2025	
25	Barn	W	G1 truss	–	DWE 23/09/2025	
26	Barn	SW	G1 north-east elevation	2m	DWE 23/09/2025	
27	Barn	NW	G1 south-east elevation	2m	DWE 23/09/2025	
28	Barn	NE	G1 south-west elevation	2m	DWE 23/09/2025	
29	Barn	SE	G1 north-west elevation	2m	DWE 23/09/2025	
30	Barn	SE	G1 north-west elevation; reused stone	2m	DWE 23/09/2025	
31	Barn	SW	G2 floor	–	DWE 23/09/2025	
32	Barn	SW	G2 roof	–	DWE 23/09/2025	
33	Barn	SW	G2 north-east elevation	–	DWE 23/09/2025	
34	Barn	SE	G2 north-west elevation	–	DWE 23/09/2025	

Project name:		Written Stone Farm, Written Stone Lane, Longridge, Lancashire: Archaeological Building Recording			Film type:	Digital
Project Code:		G1649	Site Code:	WS25	Film No.:	1
Shot No.	Area	From	Description	Scale size	Initial/date	
35	Barn	SW	G3 floor	2m	DWE 23/09/2025	
36	Barn	W	G3 stalls	2m	DWE 23/09/2025	
37	Barn	SE	G3 stalls	2m	DWE 23/09/2025	
38	Barn	E	G3 ceiling	–	DWE 23/09/2025	
39	Barn	SW	G3 north-east elevation	2m	DWE 23/09/2025	
40	Barn	NE	G3 through to north-west	2m	DWE 23/09/2025	
41	Barn	NW	G3 south-east elevation	2m	DWE 23/09/2025	
42	Barn	NW	G3 south-east elevation windows	2m	DWE 23/09/2025	
43	Barn	W	G3 south-east elevation; north-east window	2m	DWE 23/09/2025	
44	Barn	NW	G3 south-east elevation; alcoves	0.1m	DWE 23/09/2025	
45	Barn	W	G3 south-east elevation; alcoves	0.1m	DWE 23/09/2025	
46	Barn	NE	G3 south-west elevation; south-east door	2m	DWE 23/09/2025	
47	Barn	E	F1 floor	–	DWE 23/09/2025	
48	Barn	E	F1 truss	–	DWE 23/09/2025	
49	Barn	NE	F1 south-west side	–	DWE 23/09/2025	
50	Barn	N	F1 south-east side	–	DWE 23/09/2025	
51	Outbuilding to north	E	East external elevation	2m	DWE 23/09/2025	
52	Outbuilding to north	N	North external elevation	2m	DWE 23/09/2025	
53	Outbuilding to north	W	West external elevation	2m	DWE 23/09/2025	
54	Outbuilding to north	W	West external elevation	2m	DWE 23/09/2025	
55	Outbuilding to north	S	South external elevation	2m	DWE 23/09/2025	
56	Outbuilding to north	S	South external elevation; door	2m	DWE 23/09/2025	
57	Outbuilding to north	SE	Outbuilding	2m	DWE 23/09/2025	
58	Outbuilding to north	W	South room	1m	DWE 23/09/2025	
59	Outbuilding to north	W	North room, north side	1m	DWE 23/09/2025	
60	Outbuilding to north	E	North room, west side	1m	DWE 23/09/2025	
61	Outbuilding to north	SE	North room, west side; alcove	1m	DWE 23/09/2025	
62	House	N	North-east external elevation	2m	DWE 23/09/2025	
63	House	NE	North-east external elevation, north-west side	2m	DWE 23/09/2025	
64	House	NE	North-east external elevation, north-west side; door	2m	DWE 23/09/2025	
65	House	NE	North-east external elevation, north-west side; door	2m	DWE 23/09/2025	
66	House	NE	North-east external elevation, north-west side; window	2m	DWE 23/09/2025	
67	House	E	North-east external elevation, south-east side	2m	DWE 23/09/2025	
68	House	NE	North-east external elevation, south-east side	2m	DWE 23/09/2025	

Project name:		Written Stone Farm, Written Stone Lane, Longridge, Lancashire: Archaeological Building Recording		Film type:	Digital	
Project Code:		G1649	Site Code:	WS25	Film No.:	1
Shot No.	Area	From	Description	Scale size	Initial/date	
69	House	SE	South-east external elevation	2m	DWE 23/09/2025	
70	House	SE	South-east external elevation; door	2m	DWE 23/09/2025	
71	House	SE	South-east external elevation; datestone	–	DWE 23/09/2025	
72	House	SE	South-east external elevation; blind window	–	DWE 23/09/2025	
73	House	SE	South-east external elevation: hopper	–	DWE 23/09/2025	
74	House	S	South-east external elevation; north-east windows	2m	DWE 23/09/2025	
75	House	E	South-east external elevation; south-west windows	2m	DWE 23/09/2025	
76	House	W	South-west external elevation; south-east end	2m	DWE 23/09/2025	
77	House	W	South-west external elevation; south-east end	2m	DWE 23/09/2025	
78	House	SW	South-west external elevation; south-east windows	2m	DWE 23/09/2025	
79	House	SW	South-west external elevation; central windows	2m	DWE 23/09/2025	
80	House	SW	South-west external elevation; mullion window	2m	DWE 23/09/2025	
81	House	SW	South-west external elevation; first floor window	–	DWE 23/09/2025	
82	House	W	North-west external elevation; gable	2m	DWE 23/09/2025	
83	House	NW	North-west external elevation; gable	2m	DWE 23/09/2025	
84	House	NW	North-west external elevation; south-west window	2m	DWE 23/09/2025	
85	House	NW	North-west external elevation; north-east window	2m	DWE 23/09/2025	
86	Outbuilding to south-west	W	North-west and south-west external elevations	2m	DWE 23/09/2025	
87	Outbuilding to south-west	NW	North-west external elevation	2m	DWE 23/09/2025	
88	Outbuilding to south-west	N	North-east external elevation	2m	DWE 23/09/2025	
89	Outbuilding to south-west	E	North-east external elevation	2m	DWE 23/09/2025	
90	Outbuilding to south-west	SE	South-east external elevation	2m	DWE 23/09/2025	
91	House	NW	North-west external elevation; return	2m	DWE 23/09/2025	
92	House	W	G1 doors to the east	2m	DWE 23/09/2025	
93	House	E	G1 beams	–	DWE 23/09/2025	
94	House	NE	G1 south-west elevation	2m	DWE 23/09/2025	
95	House	SE	G1 north-west elevation fireplace	2m	DWE 23/09/2025	
96	House	NW	G2 stairs	2m	DWE 23/09/2025	
97	House	NW	G2 stairs; post	2m	DWE 23/09/2025	
98	House	SW	G2 door to north-east	2m	DWE 23/09/2025	
99	House	N	G2 door to south-west	2m	DWE 23/09/2025	

Project name:		Written Stone Farm, Written Stone Lane, Longridge, Lancashire: Archaeological Building Recording			Film type:	Digital
Project Code:		G1649	Site Code:	WS25	Film No.:	1
Shot No.	Area	From	Description	Scale size	Initial/date	
100	House	N	G3 south-west elevation	2m	DWE 23/09/2025	
101	House	NW	G3 south-east elevation	2m	DWE 23/09/2025	
102	House	SW	G3 north-east elevation	2m	DWE 23/09/2025	
103	House	SW	G3 north-east elevation; planks	2m	DWE 23/09/2025	
104	House	SE	G3 loose door	2m	DWE 23/09/2025	
105	House	W	G4 beams	–	DWE 23/09/2025	
106	House	SE	G4 beams	–	DWE 23/09/2025	
107	House	E	G4 beams	–	DWE 23/09/2025	
108	House	SE	G4 north-west elevation	2m	DWE 23/09/2025	
109	House	SW	G4 north-east elevation	2m	DWE 23/09/2025	
110	House	SW	G4 north-east elevation; door	2m	DWE 23/09/2025	
111	House	SW	G4 north-east elevation; window	2m	DWE 23/09/2025	
112	House	NW	G4 south-east elevation	2m	DWE 23/09/2025	
113	House	NW	G4 south-east elevation; cupboard	2m	DWE 23/09/2025	
114	House	NW	G4 south-east elevation; fireplace	2m	DWE 23/09/2025	
115	House	NW	G4 south-east elevation; door	2m	DWE 23/09/2025	
116	House	NE	G4 south-west elevation; planks	2m	DWE 23/09/2025	
117	House	NE	G5 stairs	2m	DWE 23/09/2025	
118	House	E	G5 side of stairs	2m	DWE 23/09/2025	
119	House	NE	G5 cupboard below stairs	1m	DWE 23/09/2025	
120	House	NE	G5 cupboard below stairs	–	DWE 23/09/2025	
121	House	E	G5 butt in north-west wall	1m	DWE 23/09/2025	
122	House	SE	G5 north-west elevation	2m	DWE 23/09/2025	
123	House	SE	G5 north-west door	2m	DWE 23/09/2025	
124	House	SW	G5 door to north-east	2m	DWE 23/09/2025	
125	House	NW	G5 door to south-east	2m	DWE 23/09/2025	
126	House	NE	G5 door to south-west	2m	DWE 23/09/2025	
127	House	N	G6 beams	–	DWE 23/09/2025	
128	House	SW	G6 door to north-east	2m	DWE 23/09/2025	
129	House	N	G6 window to south-east	2m	DWE 23/09/2025	
130	House	NE	G6 south-west elevation	2m	DWE 23/09/2025	
131	House	NE	G6 south-west elevation fireplace	2m	DWE 23/09/2025	
132	House	W	G7 beams	–	DWE 23/09/2025	
133	House	SW	G7 beams	–	DWE 23/09/2025	
134	House	SE	G7 north-west elevation	2m	DWE 23/09/2025	
135	House	S	G7 floor	2m	DWE 23/09/2025	
136	House	SW	G7 north-east elevation	2m	DWE 23/09/2025	
137	House	SW	G7 north-east elevation; fireplace	2m	DWE 23/09/2025	
138	House	SW	G7 north-east elevation; cupboard	2m	DWE 23/09/2025	
139	House	SW	G7 north-east elevation; cupboard	0.1m	DWE 23/09/2025	
140	House	SW	G7 north-east elevation; cupboard hinge	2m	DWE 23/09/2025	
141	House	NW	G7 south-east elevation; window	2m	DWE 23/09/2025	
142	House	NE	G7 south-west elevation; door	2m	DWE 23/09/2025	
143	House	SE	G5 floor	2m	DWE 23/09/2025	
144	House	N	G6 floor	2m	DWE 23/09/2025	
145	House	W	F1 doors to east	2m	DWE 24/09/2025	
146	House	NW	F1 door to south-east	2m	DWE 24/09/2025	
147	House	NE	F1 window to south-west	2m	DWE 24/09/2025	
148	House	SE	F1 north-west elevation	2m	DWE 24/09/2025	
149	House	SE	F1 north-west elevation fireplace	2m	DWE 24/09/2025	
150	House	S	F2 floor	2m	DWE 24/09/2025	

Project name:		Written Stone Farm, Written Stone Lane, Longridge, Lancashire: Archaeological Building Recording			Film type:	Digital
Project Code:		G1649	Site Code:	WS25	Film No.:	1
Shot No.	Area	From	Description	Scale size	Initial/date	
151	House	SW	F2 floor; hole to north-east	2m	DWE 24/09/2025	
152	House	SW	F2 floor; hole to north-east	2m	DWE 24/09/2025	
153	House	W	F2 newel and handrail	1m	DWE 24/09/2025	
154	House	SW	F2 stairs	1m	DWE 24/09/2025	
155	House	SW	F2 north-east window	2m	DWE 24/09/2025	
156	House	W	F2 opening to south-east	2m	DWE 24/09/2025	
157	House	NW	G2 alcove to south-east	2m	DWE 24/09/2025	
158	House	N	F2 door to south-west	2m	DWE 24/09/2025	
159	House	SE	F2 north-west elevation	2m	DWE 24/09/2025	
160	House	SW	F3 window to north-east	2m	DWE 24/09/2025	
161	House	SW	F3 door to north-east	2m	DWE 24/09/2025	
162	House	NE	F3 window to south-west	2m	DWE 24/09/2025	
163	House	E	F3 north-west elevation and bath	2m	DWE 24/09/2025	
164	House	NW	F4 door to south-east	2m	DWE 24/09/2025	
165	House	NW	F4 door to south-east; hinge	0.1m	DWE 24/09/2025	
166	House	N	F4 doors to south-west	2m	DWE 24/09/2025	
167	House	SE	F4 door to north-west	2m	DWE 24/09/2025	
168	House	NE	F5 window to south-west	2m	DWE 24/09/2025	
169	House	SE	F6 window to north-east	2m	DWE 24/09/2025	
170	House	NW	F6 south-east elevation	2m	DWE 24/09/2025	
171	House	NW	F6 south-east elevation; cupboard	2m	DWE 24/09/2025	
172	House	NW	F6 south-east elevation; cupboard	2m	DWE 24/09/2025	
173	House	NW	F6 south-east elevation; fireplace	2m	DWE 24/09/2025	
174	House	NW	F6 south-east elevation; door	2m	DWE 24/09/2025	
175	House	E	F6 north-west and south-west elevations	2m	DWE 24/09/2025	
176	House	NW	North-west external elevation	2m	DWE 24/09/2025	
177	House	W	North-west external elevation	2m	DWE 24/09/2025	
178	House	SW	F7 north-east door (x2)	2m	DWE 24/09/2025	
179	House	NW	F7 south-east door	2m	DWE 24/09/2025	
180	House	NE	F7 under attic stairs	-	DWE 24/09/2025	
181	House	E	F7 stairs	1m	DWE 24/09/2025	
182	House	NE	F7 south-west door to stairs	2m	DWE 24/09/2025	
183	House	SE	F7 door to north-west (south-west)	2m	DWE 24/09/2025	
184	House	SE	F7 door to north-west (north-east)	2m	DWE 24/09/2025	
185	House	SE	F7 door to north-west; hinge	0.1m	DWE 24/09/2025	
186	House	NE	F7 floor	2m	DWE 24/09/2025	
187	House	NE	F8 floor	2m	DWE 24/09/2025	
188	House	N	F8 floor	2m	DWE 24/09/2025	
189	House	SW	F8 north-east end	2m	DWE 24/09/2025	
190	House	NW	F8 south-east window	2m	DWE 24/09/2025	
191	House	NE	F8 south-west elevation	2m	DWE 24/09/2025	
192	House	NE	F8 south-west elevation; fireplace	2m	DWE 24/09/2025	
193	House	SE	F8 north-west elevation; door	2m	DWE 24/09/2025	
194	House	SE	F8 north-west elevation; door hinge	0.1m	DWE 24/09/2025	
195	House	S	F9 floor	2m	DWE 24/09/2025	
196	House	N	F9 beams	-	DWE 24/09/2025	
197	House	SW	F9 north-east elevation	2m	DWE 24/09/2025	
198	House	NW	F9 south-east elevation window	2m	DWE 24/09/2025	
199	House	E	F9 south-west and north-west elevations	2m	DWE 24/09/2025	
200	House	NE	F9 south-west elevation; door	2m	DWE 24/09/2025	
201	House	NE	F9 south-west elevation; door hinge	0.1m	DWE 24/09/2025	

Project name:		Written Stone Farm, Written Stone Lane, Longridge, Lancashire: Archaeological Building Recording			Film type:	Digital
Project Code:		G1649	Site Code:	WS25	Film No.:	1
Shot No.	Area	From	Description	Scale size	Initial/date	
202	House	SE	A1 north-west elevation	–	DWE 24/09/2025	
203	House	NW	A1 south-east elevation	–	DWE 24/09/2025	
204	House	SE	A1 purlins to south-west	–	DWE 24/09/2025	
205	House	SW	A1 purlins to north-east	–	DWE 24/09/2025	
206	House	SE	A2 north-west elevation	–	DWE 24/09/2025	
207	House	SE	A2 north-west elevation	–	DWE 24/09/2025	
208	House	SW	A2 purlins to north-east	–	DWE 24/09/2025	
209	House	W	A2 south-east elevation	–	DWE 24/09/2025	
210	House	NW	A2 south-east elevation	–	DWE 24/09/2025	
211	House	SW	A3 floor	2m	DWE 24/09/2025	
212	House	W	A3 floor	2m	DWE 24/09/2025	
213	House	SW	A3 north-east truss	2m	DWE 24/09/2025	
214	House	NE	A3 north-east truss; south-east end	2m	DWE 24/09/2025	
215	House	NE	A3 south-west truss	2m	DWE 24/09/2025	
216	House	SW	A3 south-west truss; south-east end	2m	DWE 24/09/2025	
217	House	S	A3 south-west truss; north-west end	2m	DWE 24/09/2025	
218	House	SW	A3 north-east elevation	2m	DWE 24/09/2025	
219	House	NE	A3 south-west elevation	2m	DWE 24/09/2025	
220	House	E	A3 stairs	1m	DWE 24/09/2025	
221	House	NE	A3 windows to south-west	2m	DWE 24/09/2025	
222	House	SW	A3 north-east truss; south-east end	0.1m	DWE 24/09/2025	
223	House	SW	A3 north-east truss; top	0.1m	DWE 24/09/2025	
224	House	SW	A3 north-east truss; north-west end	0.1m	DWE 24/09/2025	
225	House	S	A3 north-east truss; north-west end	0.1m	DWE 24/09/2025	
226	House	S	A3 north-east truss; reused purlin	0.1m	DWE 24/09/2025	
227	House	S	A3 north-east truss; reused purlin	0.1m	DWE 24/09/2025	
228	House	SW	A3 north-east truss; south-west purlin, south-east end	0.1m	DWE 24/09/2025	
229	House	SW	A3 north-east truss; top	0.1m	DWE 24/09/2025	
230	House	SE	A3 north-west elevation; chimney	–	DWE 24/09/2025	
231	House	SE	A3 north-west elevation; roofline	–	DWE 24/09/2025	
232	House	NW	A3 reused purlin	0.1m	DWE 23/09/2025	
233	House	W	A3 purlins south-east side	0.1m	DWE 23/09/2025	
234	House	W	A3 purlins south-east side	2m	DWE 23/09/2025	
235	House	N	A3 purlins south-east side	2m	DWE 23/09/2025	



Figure 12: Ground and first floor plans of the farmhouse, showing the location and direction of photographs taken

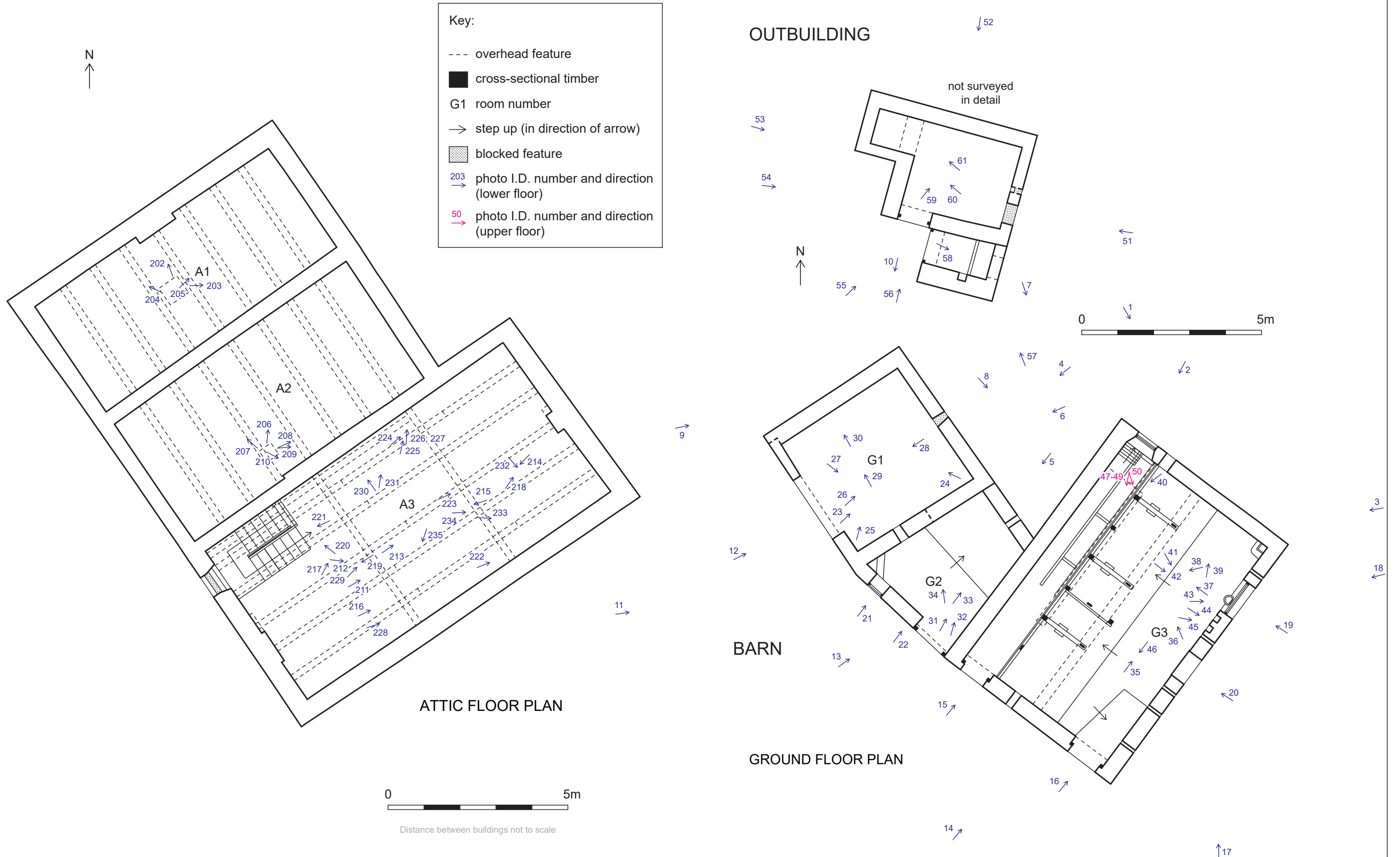


Figure 13: Attic floor plan of the farmhouse and ground floor plans of the barn and outbuilding, showing the location and direction of photographs taken

Appendix 4: Archive Index

Project name:	Written Stone Farm, Written Stone Lane, Longridge, Lancashire: Archaeological Building Recording		
Project Code:	G1630	Site Code:	WF25
Description	Material	Size	Quantity
Report	Paper	A4 and A3, comb-bound	37 pages, double-sided
Fabric record sheet	Paper	A4	3 sheets, single-sided
Elevation record sheet	Paper	A4	5 sheets, double-sided
Room record sheet	Paper	A4	7 sheets, double-sided
Photo record sheet	Paper	A4	2 sheets, double-sided
Drawing index	Paper	A4	1 sheet, single-sided
Drawings	Paper	A3	5 annotated sheets, single and double-sided
Digital archive index	Paper	A4	1 sheet, single-sided
Digital archive	DVD	-	1