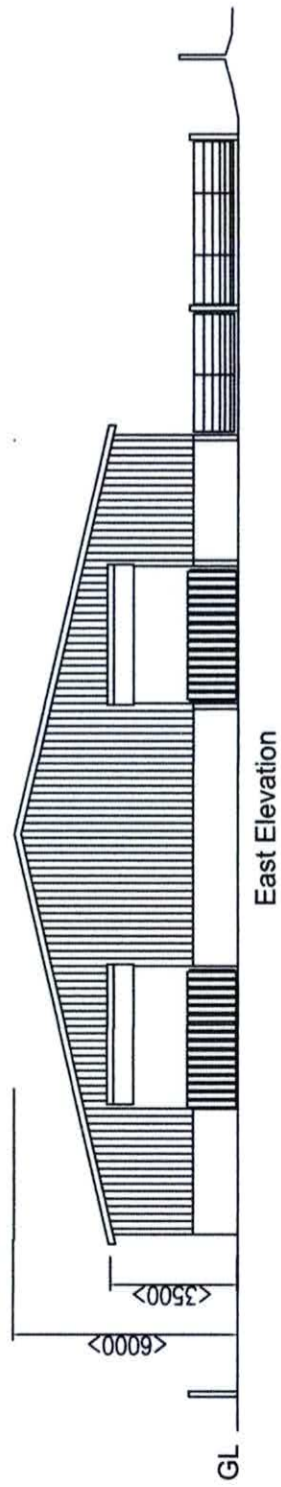
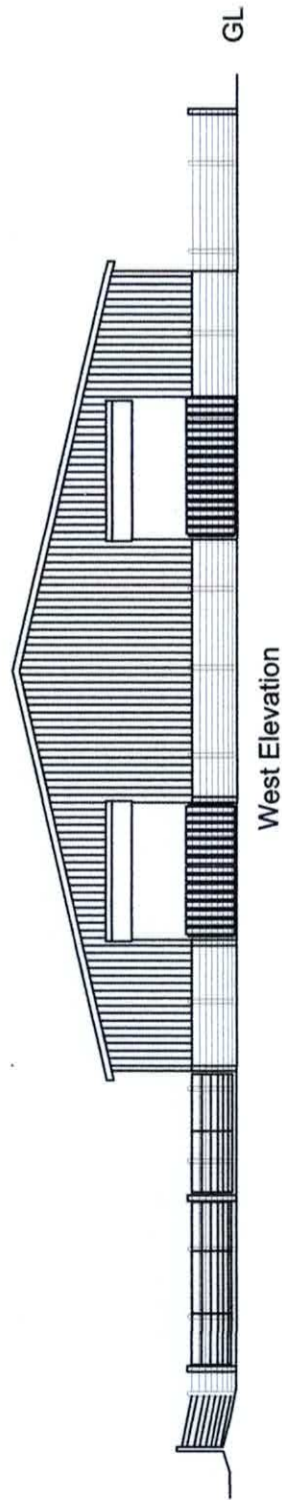


Existing Elevations
1:200 @ A3

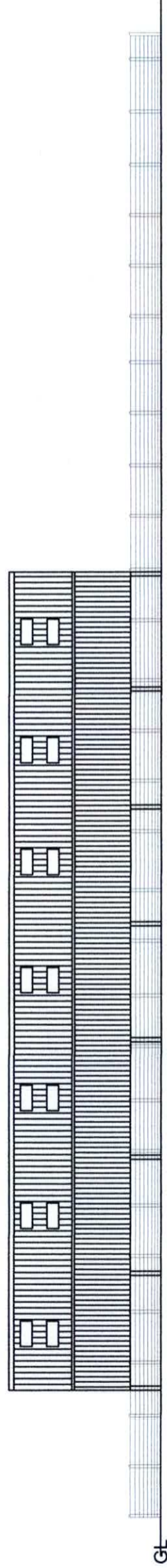


East Elevation

- Materials:
- Walls - Concrete panels to 1200mm clad above with Yorkshire boarding
 - Roof - Eternit Farmscape fibre cement sheets
 - GRP rooflights
 - Doors - Steel frame with timber cladding
 - Boundary fence - Tanalised timber posts and galvanised sheep netting



West Elevation



South Elevation



North Elevation

Proposed Elevations
1:200 @ A3