

Notes:

All work is to be carried out to the latest current British standards Codes of Practice and recognised working practices.

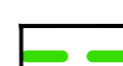
All work and materials should comply with Health and Safety legislation.


All dimensions are in millimeters where explicitly shown otherwise.

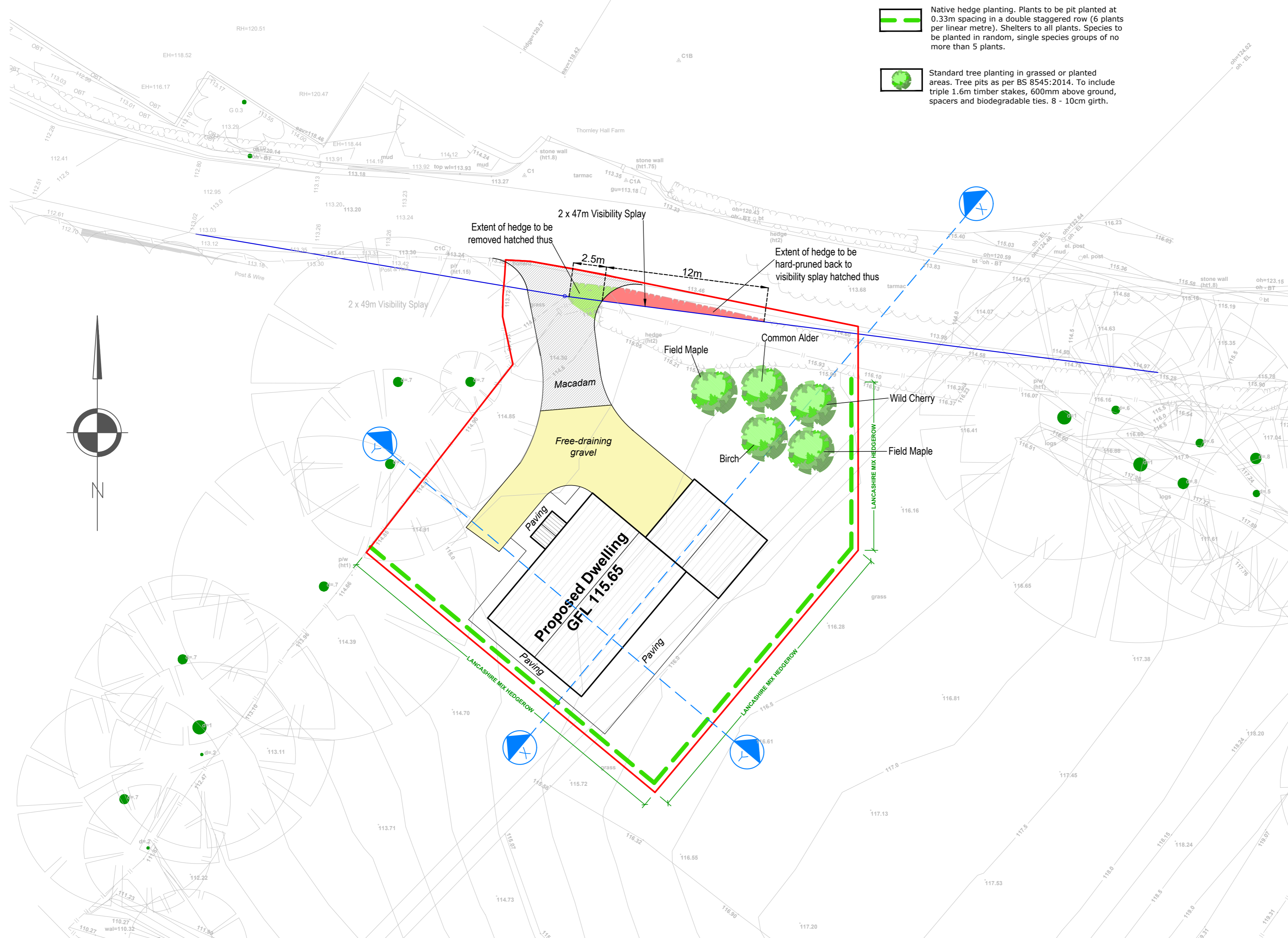
The contractor should check and certify all dimensions as work proceeds and notify the architect of any discrepancies.

Do not scale off the drawings, if in doubt ask.

Tree & Hedge Planting

 Native hedge planting. Plants to be pit planted at 0.33m spacing in a double staggered row (6 plants per linear metre). Shelters to all plants. Species to be planted in random, single species groups of no more than 5 plants.

 Standard tree planting in grassed or planted areas. Tree pits as per BS 8545:2014. To include triple 1.6m timber stakes, 600mm above ground, spacers and biodegradable ties. 8 - 10cm girth.



Specification for Soft and Hard Landscape Works.

All landscape works shall comply with BS 4428:1989.

Unless where otherwise specified:-

- A. Setting Out**
- Planting shall be set out exactly as shown on the drawing and measured from existing fixed points. Curved beds shall be set out using only rolls scribbled on the ground using two parallel stakes and a line between, or with site marker paint. The junction between convex and concave curves shall be cut to form a smooth and even flowing line. Check that all setting out conforms to the drawing before cultivation and planting works are carried out. Failure to do so may result in rejection of the work by the landscape architect and may require amendment to the contractor's expense.
 - All planting beds shall be a minimum of 1 metre wide, except where there is insufficient space, due to the constraints of walls and path edgings and their foundations. With narrow beds between walls/fences and path edgings, ensure that the bed has space free from concrete footings before planting. If the bed is sealed with concrete, then the landscape contractor shall contact the site manager or landscape architect to determine if footings are excessive and can be reduced or else, the bed can be paved. The width of all beds will be checked by the inspecting landscape architect and where the width is not as drawn, the contractor shall re-cultivate them to the specified width at his own expense.
- B. Ground Preparation**
- Pre-planting herbicide application shall be applied by suitable spraying apparatus using an approved translocated systemic herbicide to manufacturer's instructions and to 1997 Control of Pesticides Regulations and 2003 COSHH regulations on all beds, except those which are both weed free and are to receive geotextile sheet mulch. Spray immediately if any weeds are present. If none are showing, but there may be a delay before germination, or the area is to be seeded, spray after one month following cultivation, to allow dormant seed to germinate. All spraying shall be carried out by skilled and qualified operators, using protective clothing, in suitable weather (no wind) and any damage caused by spray drift, from incorrect usage or spillage, shall be rectified at the contractor's own cost. Repeat as necessary to ensure complete kill and rake off all dead material from site.
 - Carry out the following works to the existing topsoil on site to ensure it conforms to BS 3882:2015, being free from rocks larger than 50mm diameter, concrete, all roots, wire, brick, and have less than 20% clay. Allow for pre-application of herbicide as above. Fertilise with 100g per square metre of Fisons 'Neutrocor' slow release fertiliser, in accordance with the manufacturer's instructions. For beds less than 5 metres in width, fork over thoroughly or machine release soil to a depth of 300mm, ensuring that the subsoil and any stones are completely broken up and free draining, retaining any compaction. For beds greater than 5 metres in width, break up the subgrade and topsoil using a tractor mounted subsoiler or ripper at 500mm centres to a depth of 500mm, except where there are services, or within 10 metres of tree stems or 3 metres of existing hedges. Do not rip areas where roots greater than 10mm diameter are encountered. Do not break up soil within the root protection zone of any retained tree. Refer to All About Trees Articultural Implications Assessment for further information.
 - Determine before submitting a tender, the extent of support from the site manager with ground preparation: ensure soil of all planting beds is graded to a level 60mm below adjacent grass or paved surfaces, (90mm below where geotextile sheet mulch is not specified), within 400-600mm of edges to ensure bank or road ditch margins are retained. Where grass is proposed, then the soil level shall be flush (maximum 10mm below - but never proud) of adjacent paved surfaces, to receive rain water run-off. The landscape contractor shall be responsible for ensuring that the final product conforms to the specification even where the developer and/or main contractor have failed to supply and spread topsoil to the required level. The landscape contractor shall allow for adjustment of levels, as specified above, including for re-grading subsoil and topsoil. Where beds are sloping, ensure that topsoil is graded to the specified levels below pavement & grass surfaces within 100mm of the edges of the bed. This is to allow for sheet mulch and bark or wood chip mulch so that much does not spill out on to pavements and also to allow surface water to drain from paths on to planted areas.
 - For sloping areas to be turf laid adjacent to paved areas, topsoil levels shall be graded flush with the finished pavement level (or up to 100mm below), to allow surface water to drain from pavements to soft areas. Soil of grass areas should therefore never be proud of paved areas. Soil levels more than 10mm below pavement edges will cause mower damage on cutting.
 - Imported topsoil (unless specified and sanctioned by the employer) for marking up ground, shall conform to BS 3882: 2007, and be free from rocks (over 50mm diameter), concrete, roots, wire and brick, and have less than greater than 20% clay. Such soil shall be cultivated as set out above. Representative samples shall first be approved by the landscape architect before being supplied to site. No imported soil shall be supplied to site without a written instruction.
- C. Planting**
- All planting must be carried out in accordance to the specification and schedule of quantities accompanying these drawings. Refer to the specification for the preparation of existing topsoil and required depths for planting, turfing, and standard trees, and also for maintenance requirements.
 - No substitutions will be accepted without the prior agreement of the inspecting landscape architect. The contractor shall replace at once at his own cost any stock size, species or variety of plant which has not been specified on the planting plan and schedule, unless prior agreement to a substitution by the landscape architect has been received. All plants shall be true to size specified in the schedule of plants and associated notes, (3L pots are 150mm diameter and 150mm deep). All shrubs, (other than ground cover), shall be 400-600mm height and spread, or otherwise specified for the pot size by the HFA National Plant Specification and be bushy, healthy, disease free stock, not pot bound, leggy or spindly. There should be a minimum of 5 branches per shrub. This specification is the minimum standard required and any stock falling below this standard, in the sole opinion of the inspecting landscape architect, shall be fitted and replaced at the contractor's expense.
 - Refer to accompanying Landscape Management Plan for watercare details.
 - Proposed large feathered or standard trees to be true to the species, variety and size as specified on the planting plan, to include 1.6m central stake 600mm above ground and 1000mm below ground) and 1.6m tie with spacing device positioned 250mm maximum from the top of the post.
 - Turf to be of cultivated grade such as Revlon 'Hedger' or other of similar quality and source, approved by the landscape architect. The contractor shall replace at once any turf rejected by the landscape architect at his own cost.
 - Self-clinging climbing shrubs or wall shrubs shall be trained to the wall/fence with heavy duty, plastic coated garden wire. Training wires shall be attached vertically to the wall/fence by means of 125mm long stainless steel end screw fittings. Position 100 to 250mm from ground, and 100 to 250mm from top of the wall/fence, and string the wire tightly between the fittings. Train the climber to the wire with plastic coated garden wire tags.
 - Training varieties of climber shall be trained to walls/fence by mounting ready-made trellis panels 1.8 x 1.8m generally (but 1.8 x 0.6m for corners or where space is restricted). Include for adapting any panels for locations where walls or fences are made of stone or brickwork. The trellis panels shall be made of galvanized steel (125mm long (to be approved)), incorporating 50mm cube wood spacing blocks to ensure that the panel is mounted sufficiently far from the wall/fence to allow training of shrubs. Ensure that the trellis is not impregnated with a non-phyto-toxic preservative and then painted with a dark brown non-phyto-toxic preservative wood stain such as Sadolin 'Hedger' or similar and approved. Ensure that the trellis is not in contact with the ground. Train the climbing shrub to the trellis with plastic coated garden wire tags.
 - Climbers specified outside proposed shrub beds shall have specially prepared climber pits. Climber pits shall be 400mm x 400mm and 600mm deep (minimum level), and be backfilled with topsoil (from site - unless otherwise agreed). Ensure the base of the pit is thoroughly broken up and free draining before back filling with topsoil. Ensure no damage to foundations and services, and make good all structures and surfaces disturbed. Fertilise with 50g of Fisons 'Neutrocor' slow release fertiliser. Water with 15 litres of water per climber pit.

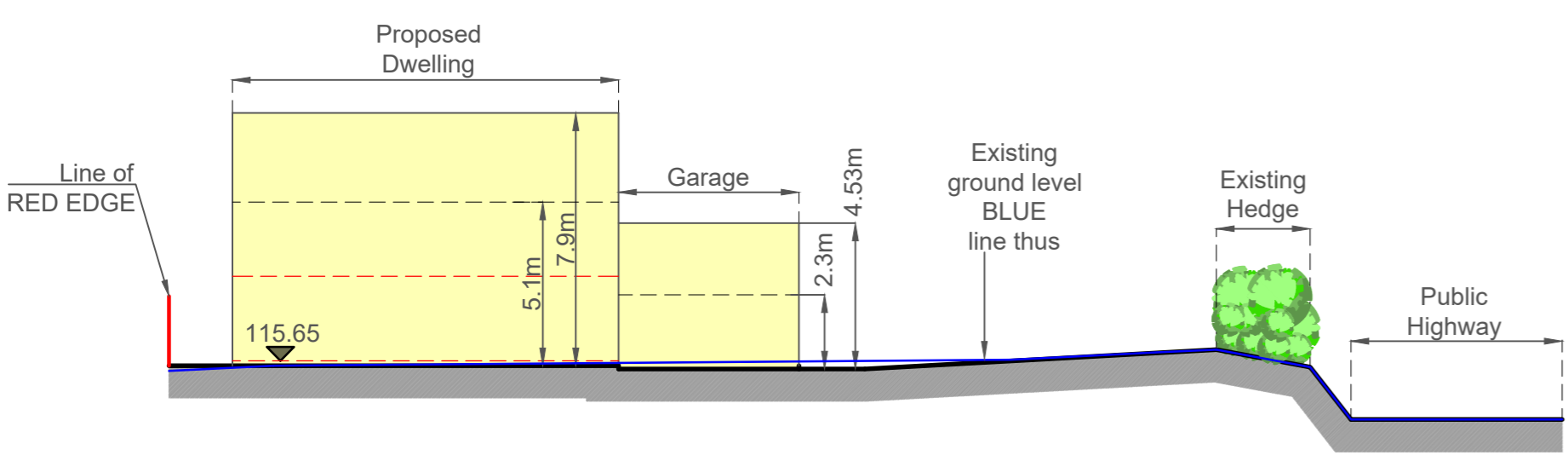
- D. Mulch**
- When specified by the additional specification notes on this plan, supply and spread appropriate 'Weedstop Fabric' sheet mulch over planting beds, previously cultivated, graded and fertilized topsoil before planting, and peg down with Weedstop pegs at a minimum of 500mm centres, (300mm at edges) and beds less than 1m wide. Pegging this densely is essential to prevent fibres of material becoming exposed. Refer to the specification for 'Weedstop Fabric' sheet mulch on plan.
 - Following planting supply and spread evenly Helocut Industries 'Rustic Biomulch' to a depth of 50mm, (50mm if no sheet mulch specified), over all planted areas. Finished mulch levels shall be no higher than 15mm below pavement or grass levels to avoid any spillage onto pavements or lawns. N.B. no substitution of mulch type will be acceptable. It is essential to have a no-draw, large perforated, brown wood chip to reduce weed growth, reduce wind blow and prevent rapid breakdown.

- E. BS Codes**
- General landscape operations (excluding hard surfaces) - BS 4428:1989.
 - Trees in relation to construction - BS 5377:2012.
 - BS 3998:2010 (recommendations for tree works) unless otherwise specified.
 - Anticorrosion Association - BS 8 Framework for tree work contracts - standard conditions of contract and specification for tree works 2008.
 - BS 8545:2014 Trees: from nursery to independence in the landscape: Recommendations
 - Nursery stock in accordance with latest horticultural trade association nursery stock specification entitled 'National Plant Specification 2003'.
 - Turf - BS 3998:1988 - recommendations for turf for general purposes.
 - Seeding - EEC Regulations 1974. Use blue labelled certified varieties to EC purity and germination regulations. When requested, submit an official seed Testing Station Certificate of germination, purity and composition.
 - Topsoil - BS 3882:2007
 - Pesticides: Control of Pesticides Regulations 1997, The Health and Safety at Work Act 1974, the COSHH Regulation 2002, the product COSHH Sheet Water Supply (Water Quality) Regulations amended 1991, Control of Pollution Act 1974, Hedgerope Act 1997, Wildlife and Countryside Act 1981.

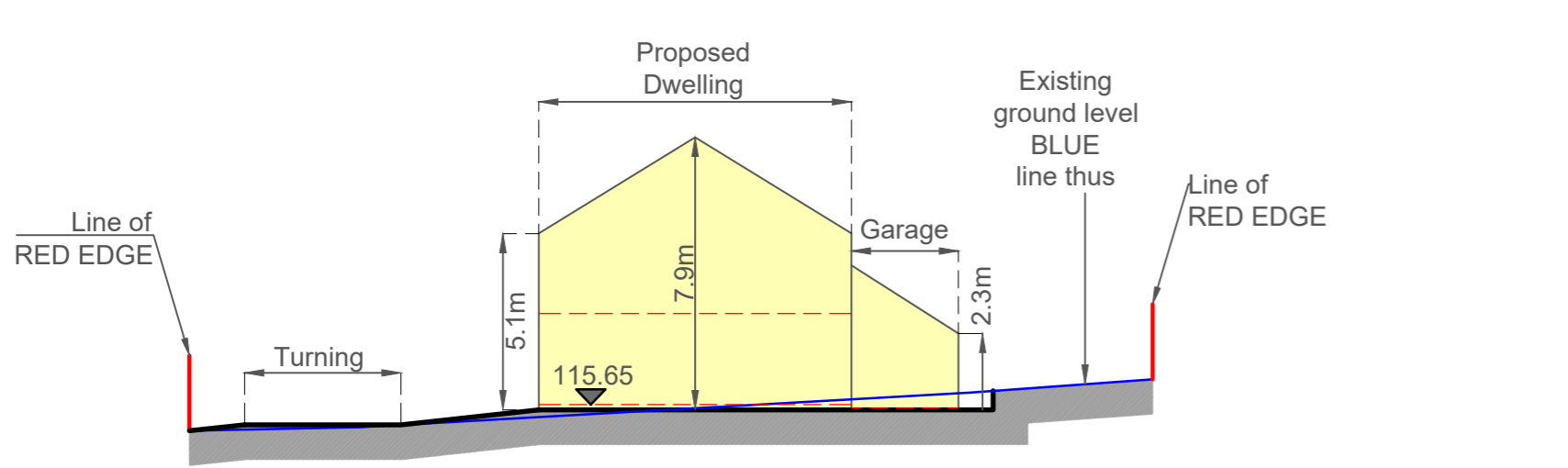
- F. General Notes for the Developer.**
- Tree Protection**
Please refer to All About Trees' tree protection information. No digging to take place within the root protection zones of protected trees.
 - Ground Work**
Soil levels for shrub beds and grass areas should have any compacted subgrade thoroughly broken up by machine before introducing the ground worker to spread topsoil or the landscape contractor to commence work on the beds will become waterlogged in wet weather and the plants will die.
Top soil spread from on site should be to the following minimum depths:-
Shrub beds: 350mm. Grass areas 120mm. Allow for excavation of 410mm of the subgrade for shrub beds to leave beds 60mm below finished pavement or grass areas in order to receive sheet and bark mulch. (60mm below where sheet mulch is not to be used).
Tree pits will be as per BS 8545:2014. Top soil shall be spread for grass areas flush with any areas of paving and after settlement, the soil level should be no greater than 10mm below paved areas to allow for turf. For areas to be grass seeded, the soil level shall be flush with any finished gravel surfaces after settlement, or to a maximum of 5mm below to allow for rain water to drain onto soft surfaces. Settlement shall be no greater than the tolerances given or problems will be encountered with mowing (the blades in danger of touching concrete edging) or where soil is proud of pavements, then drainage problems will be encountered.
Existing topsoil and imported soil shall conform to BS 3882:2007, and be free from compaction, rocks/boulders greater than 50mm diameter, concrete, wire, roots, debris, oil, cement and builders rubble. Soil shall have a clay content of less than 20%.

- Hardworks**
- Hard works, unless otherwise agreed, shall be carried out by the developer or main contractor. All materials and workmanship shall be in accordance with the construction details and the layout plan. All paths and edgings shall be set out properly to lines and radii, with all curves scribbled on the ground using pointed pegs and string or site marker paint, achieving flowing natural arcs. Setting out shall be agreed with the landscape contractor and subsequently the landscape architect.
- Hard surfaces shall be constructed after suitable base courses have been laid, taking full account of local site conditions, soft spots and substrate. The indicative depths of base courses are minimum depths assuming suitable substrate conditions.
- All materials shall be finished hot dipped galvanized in accordance with BS EN 15014:60. The galvanizer shall be responsible for the thorough removal of all galvanizing sludge (letting) to the complete satisfaction of the Landscape Architect. The decorating contractor shall prepare the galvanized surface by washing with detergent and water and scrubbing with a scouring pad until all dirt, grease, white rust & sulphates have been removed & then allowed to dry thoroughly. Supply and paste 'Topsol 6020' from Sika Ltd (tel: 01707 374444) applied with a turland brush strictly in accordance with the manufacturer's instructions, COSHH regulations and the product COSHH sheet. Apply 2ho. coats of paint with a dry film thickness of 100 microns per coat. Apply paint only when galvanized surface is thoroughly dry at temperatures above five degrees Celsius and in any event above the current dew point temperature. Paint work will be subject to inspection by experts and if found wanting, shall be stripped off, re-prepared and applied in accordance with the manufacturer's instructions.
- All wood work to use 100% water based wood preservative applied by vacuum pressure by Permoform or other similar and approved company. The timber shall then be stained with 3ho. coats of Sadolin 'Classic' color 'Natural' strictly in accordance with the manufacturer's instructions, COSHH Regulations 2003 and product COSHH sheet.

SECTION ON X-X (from the southeast)



SECTION ON Y-Y (from the southwest)



Revisions:

A: Landscaping details added. 20.01.26

B: Site cross sections and existing GL added 27.10.25

G H A

GARY HEERY ASSOCIATES
Gary Heery Associates, Chartered Surveyors
Suite 9 - Grindleton Business Centre
The Spinney
Grindleton
Cittering
Lancashire BB7 4DH
T: 01200 449700
Email: info@ghaonline.co.uk

Project: Air/1164/3706/GH	
Project description: Reserved Matters and Discharge of Conditions in connection with Farm Worker's Dwelling at Thornley Hall Farm Thornley, Longridge, PR3 2TN	
Title: Proposed Site Plan	
Drawing No: Air/1164/3706/03	Drawn: MP
Client: G.E. Airey & Sons	
Date: 15.10.2025	Scale: 1:200 @ A1
Amendments: A B	