


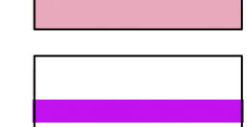
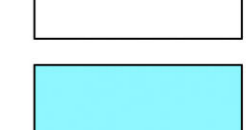

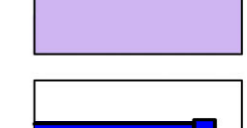

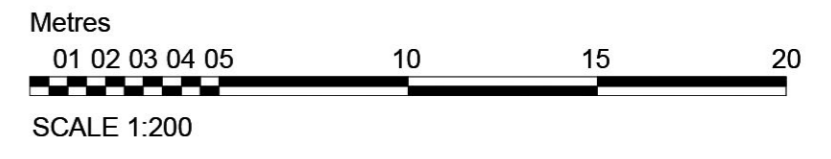
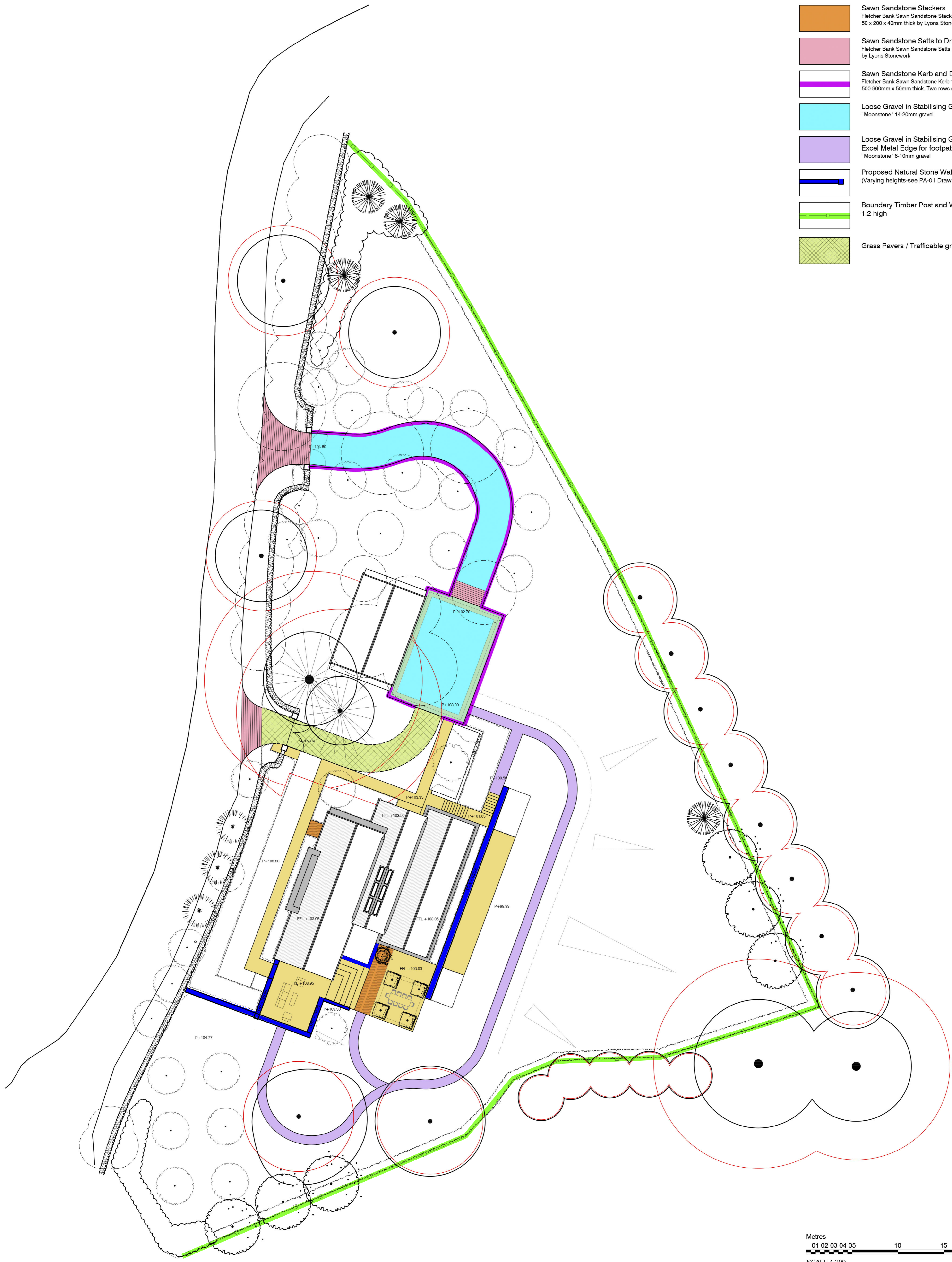


KEY & NOTES

-  Sawn Sandstone Paving
Fletcher Bank Sawn Sandstone Paving
600 x 900 x 30mm thick by Lyons Stonework
-  Sawn Sandstone Paving
Fletcher Bank Sawn Sandstone Paving
500 x 900 x 20mm thick by Lyons Stonework
-  Sawn Sandstone Stackers
Fletcher Bank Sawn Sandstone Stackers
50 x 200 x 40mm thick by Lyons Stonework
-  Sawn Sandstone Setts to Driveway
Fletcher Bank Sawn Sandstone Setts 150 x 90 x 50mm thick
by Lyons Stonework
-  Sawn Sandstone Kerb and Double Row of Setts
Fletcher Bank Sawn Sandstone Kerb 150mm high x 90mm
500-900mm x 50mm thick. Two rows of Stone setts as above
-  Loose Gravel in Stabilising Grid to Driveway
* Moonstone * 14-20mm gravel
-  Loose Gravel in Stabilising Grid with
Excel Metal Edge for footpaths
* Moonstone * 8-10mm gravel
-  Proposed Natural Stone Walls
(Varying heights-see PA-01 Drawing)
-  Boundary Timber Post and Wire Fence
1.2 high
-  Grass Pavers / Trafficable grass



bw
BARNES
WALKER

Unit 6, Longley Lane
Northenden, Manchester
M22 4WT

T: 0161 946 0808
E: design@barneswalker.co.uk
W: www.barneswalker.co.uk

DWG NO.
M3792-PA-02-V2

CLIENT.
Mr D.Dennis

WORK STAGE.
PLANNING

SCALE.
1:200@A1

DATE.
10.2025

DRAWN BY.
AC

CHECKED BY.
MU

DWG TITLE.
HARD LANDSCAPE LAYOUT

PROJECT TITLE.
Kemple Down, Chaignley

© This drawing, the graphics and the landscape works and ideas depicted therein remains the copyright of Barnes Walker Limited and may not be used, copied in whole or part, or amended without prior written consent. Figured dimensions to be followed in preference to scaled and all dimensions are to be checked on site and in the event of any discrepancy refer to Barnes Walker Limited.

