

Materials Condition Statement - 11 Kendal Street, Clitheroe, BB7 1PA

This short statement has been prepared to support the 'approval of details reserved by a condition' application at the above address.

The site received planning permission from Ribble Valley Borough Council for the 'proposed re-roofing of existing industrial unit including extending existing pitched roof over rear lean-to.' (ref. 3/2024/0970).

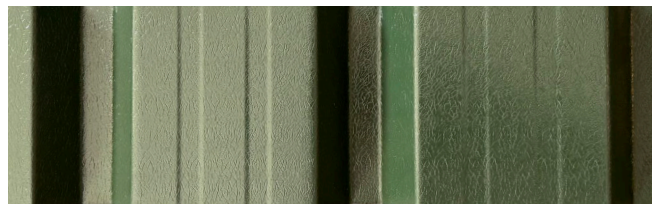
As part of the approvals, several conditions were attached and this statement relates to condition no.3 which states: -

"Notwithstanding the submitted details, details or specifications of all materials to be used on the external surfaces of the development hereby approved shall have been submitted to and approved in writing by the Local Planning Authority before their use in the proposed development. The approved materials shall be implemented within the development in strict accordance with the approved details."

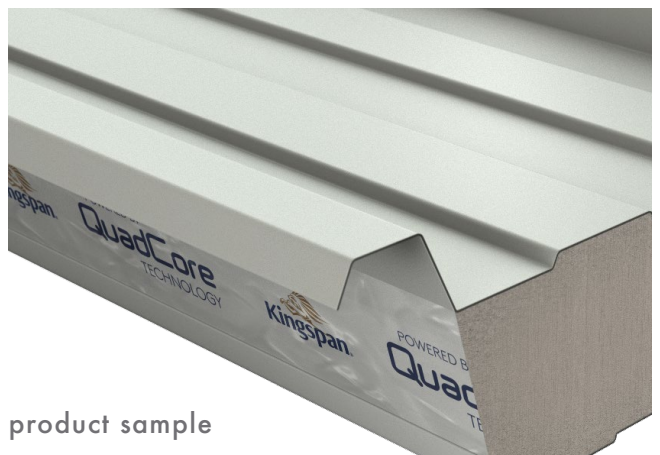
The following pages provide details in relation to the materiality of the scheme. The photographs provided below and overleaf relate to samples of these materials - physical samples can be made available on site on request.

Roof:

- Kingspan KS1000 RW Quadcore roof system
- 115mm core thickness
- RAL 6003 (Greenrock)



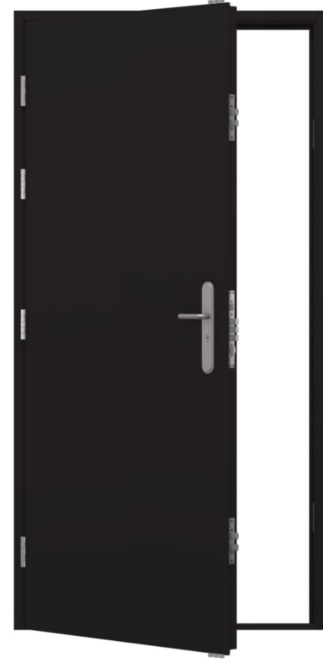
colour sample



product sample

Doors:

- steel security personnel door
- 50mm thick
- RAL 9005 (Jet Black)



Roller shutter:

- steel roller shutter door
- RAL 9005 (Jet Black)



Walls:

- sand and cement render
- paint finish
- 'off white'

