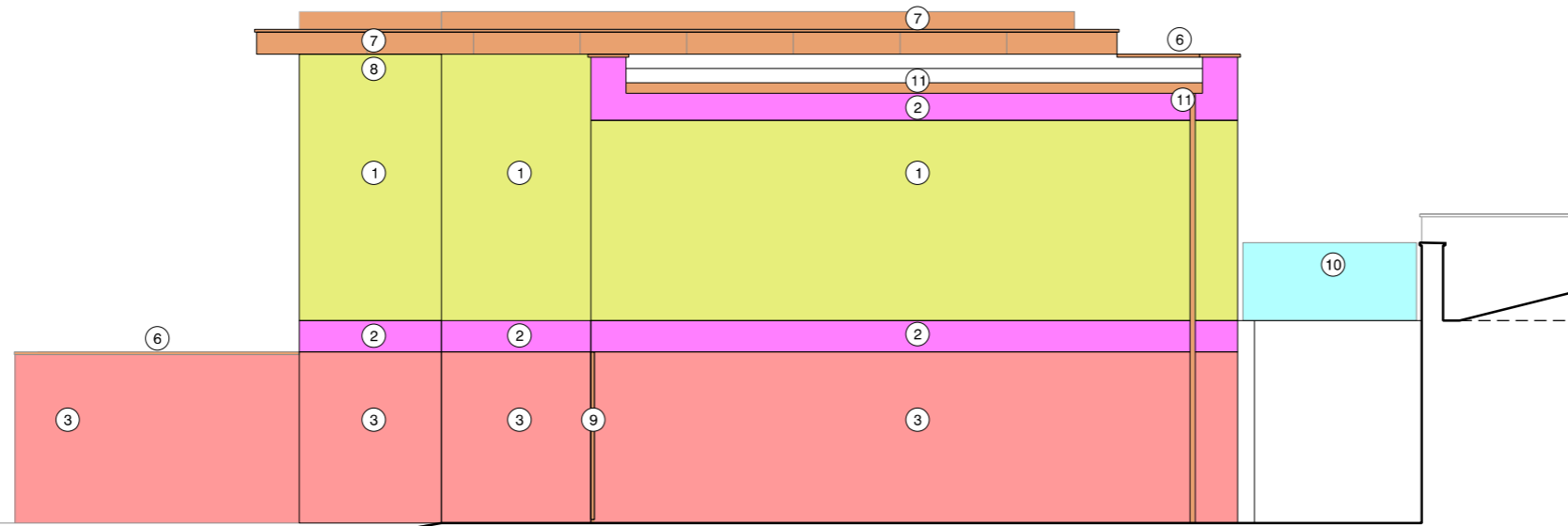
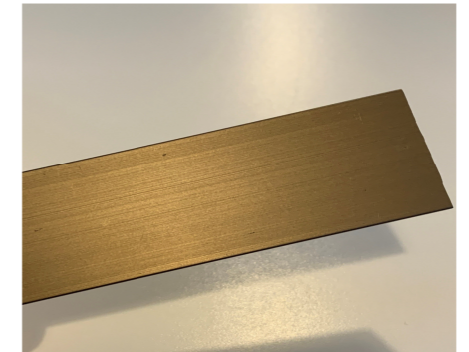


north elevation



west elevation



sample of bronze windows, cladding, and soffits in RAL 1036 metallic finish

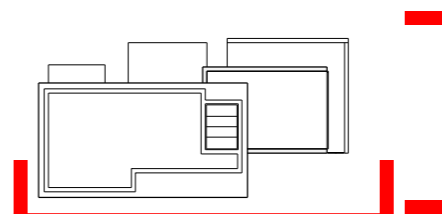


sample of Imperial Bricks Cambridge Cream bricks

revision: P01 date: 2025.10.28 note: preliminary first issue

LEGEND

- 1 stretcher bond brickwork (Cambridge Cream by Imperial Bricks) with flush pointing to match bricks
- 2 stack bond brickwork (Cambridge Cream by Imperial Bricks) with flush pointing to match bricks
- 3 stretcher bond brickwork (Cambridge Cream by Imperial Bricks) with raked horizontal joint and flush vertical joint pointing to match brickwork
- 4 clear double glazed windows
- 5 bronze coloured aluminium double glazed window system in RAL 1036 metallic finish
- 6 bronze coloured aluminium sills and copings in RAL 1036 metallic finish
- 7 bronze coloured cladding in RAL 1036 metallic finish
- 8 bronze coloured soffit in RAL 1036 metallic finish
- 9 bronze coloured external door in RAL 1036 metallic finish
- 10 cantilevered clear glass balustrade
- 11 bronze coloured gutter and downpipe in RAL 1036 metallic finish
- 12 new timber fence (brown colour varnish)



project Highcroft, Billington
 job no. 7676
 title false-colour material legend for north and west elevation
 scale 1:100 @ A3
 drawing no. al(05)0600

stephenson hamilton risley
STUDIO

3 riverside mews
 4 commercial street
 manchester, M15 4RQ
 www.shr.studio
 email@shr.studio
 0161 832 0244