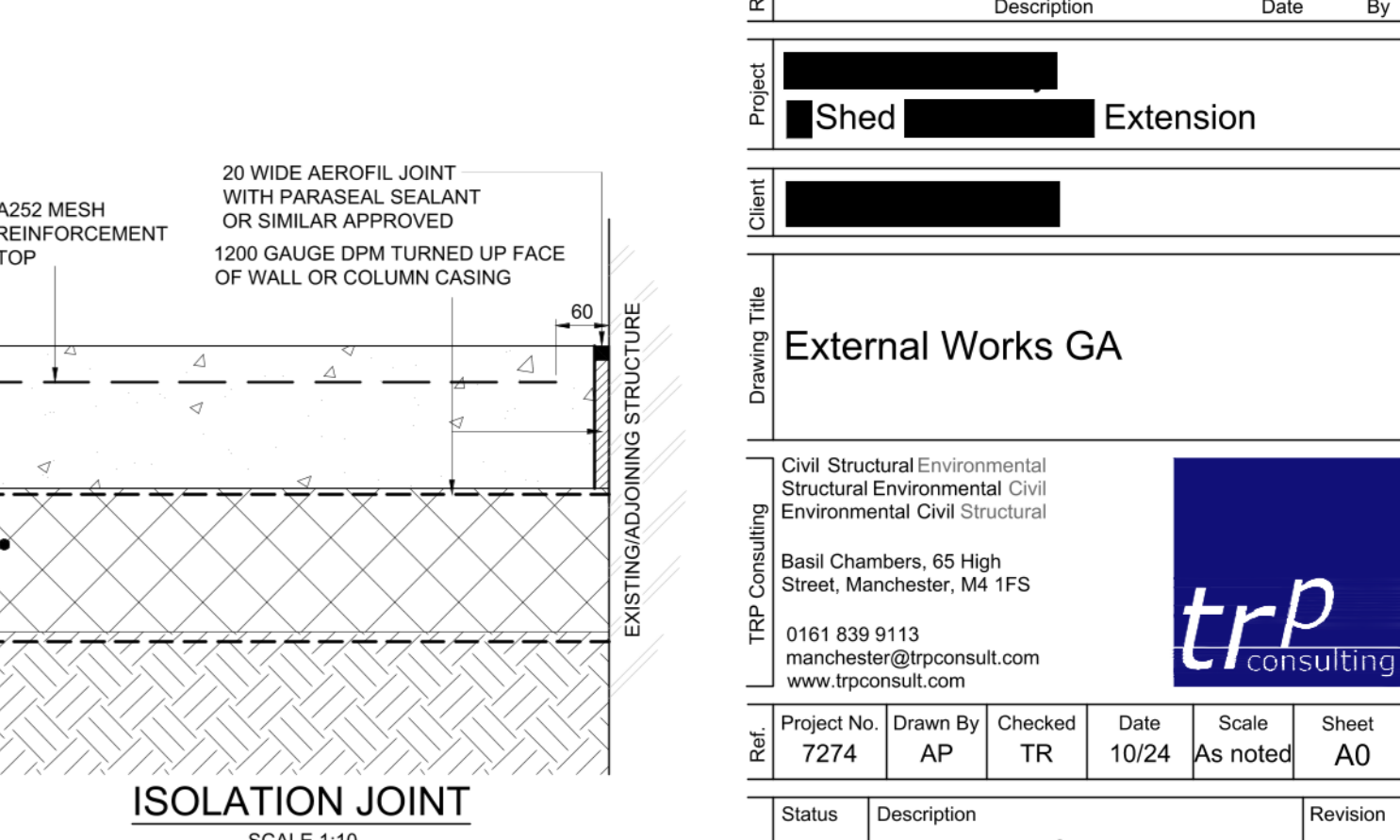
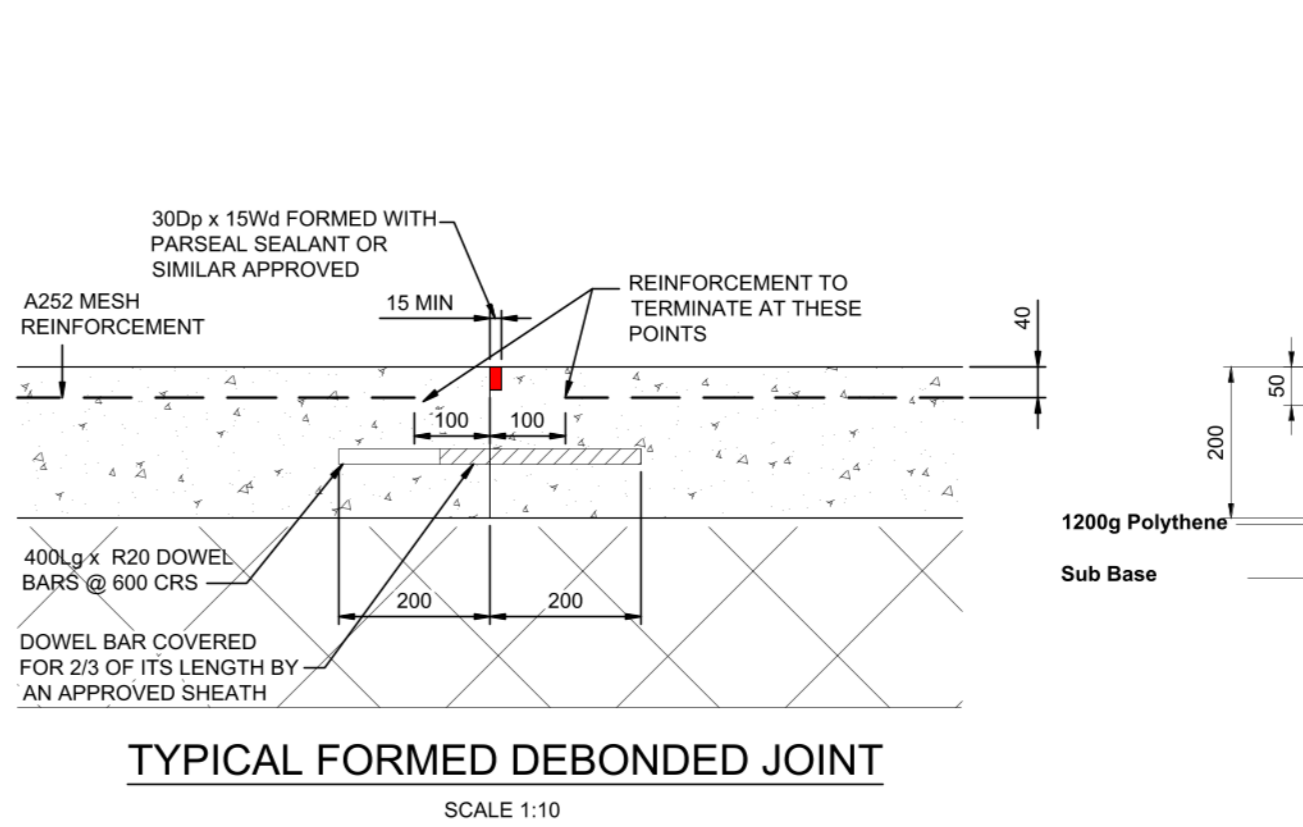
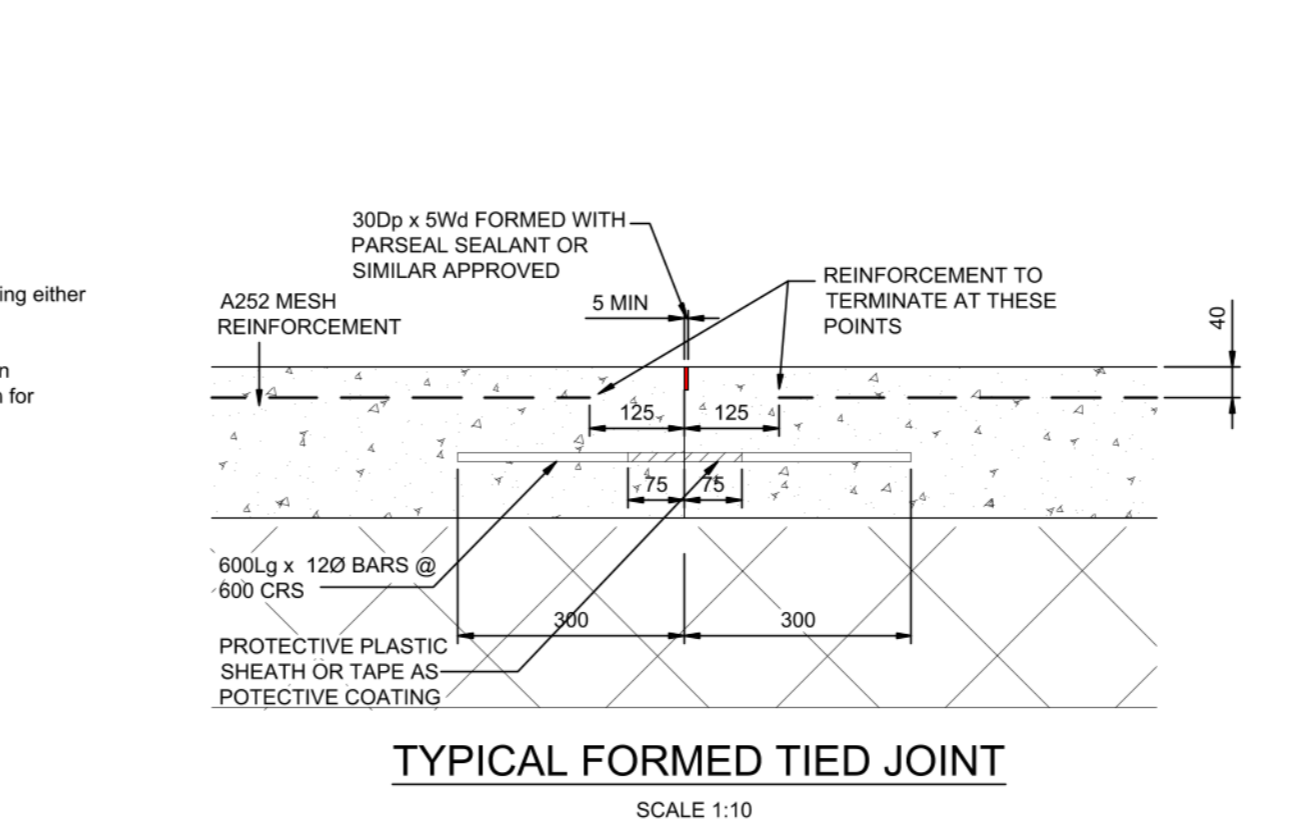
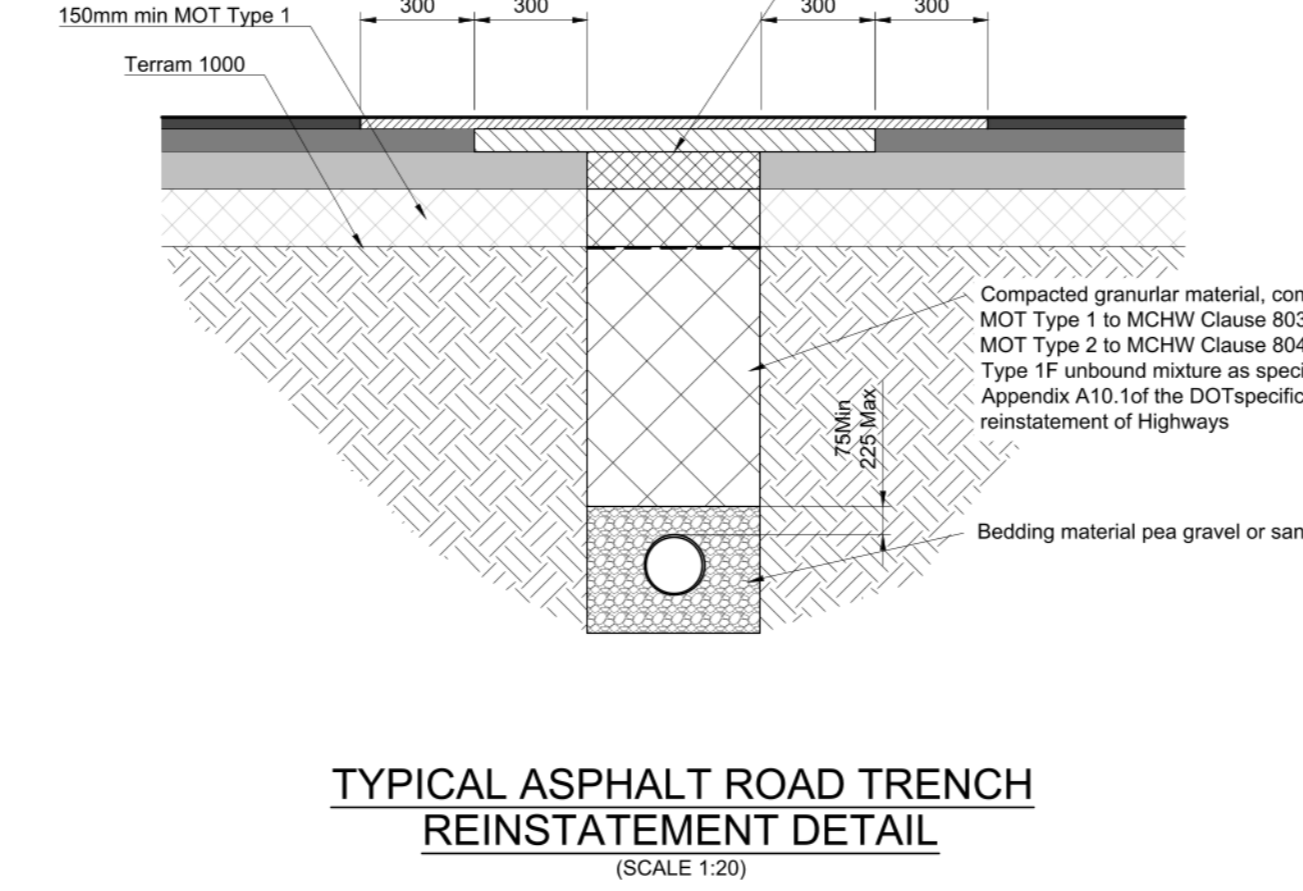
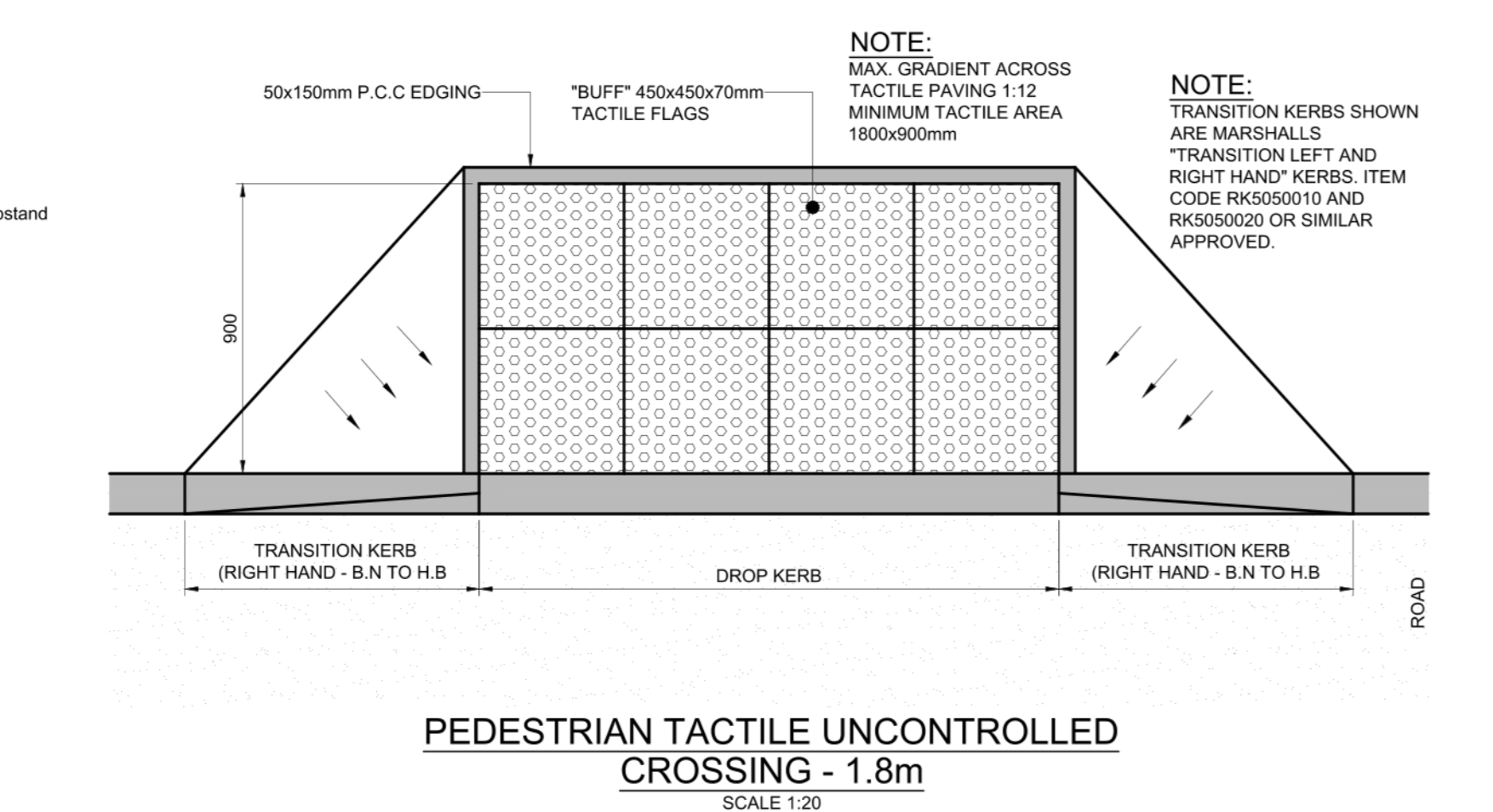
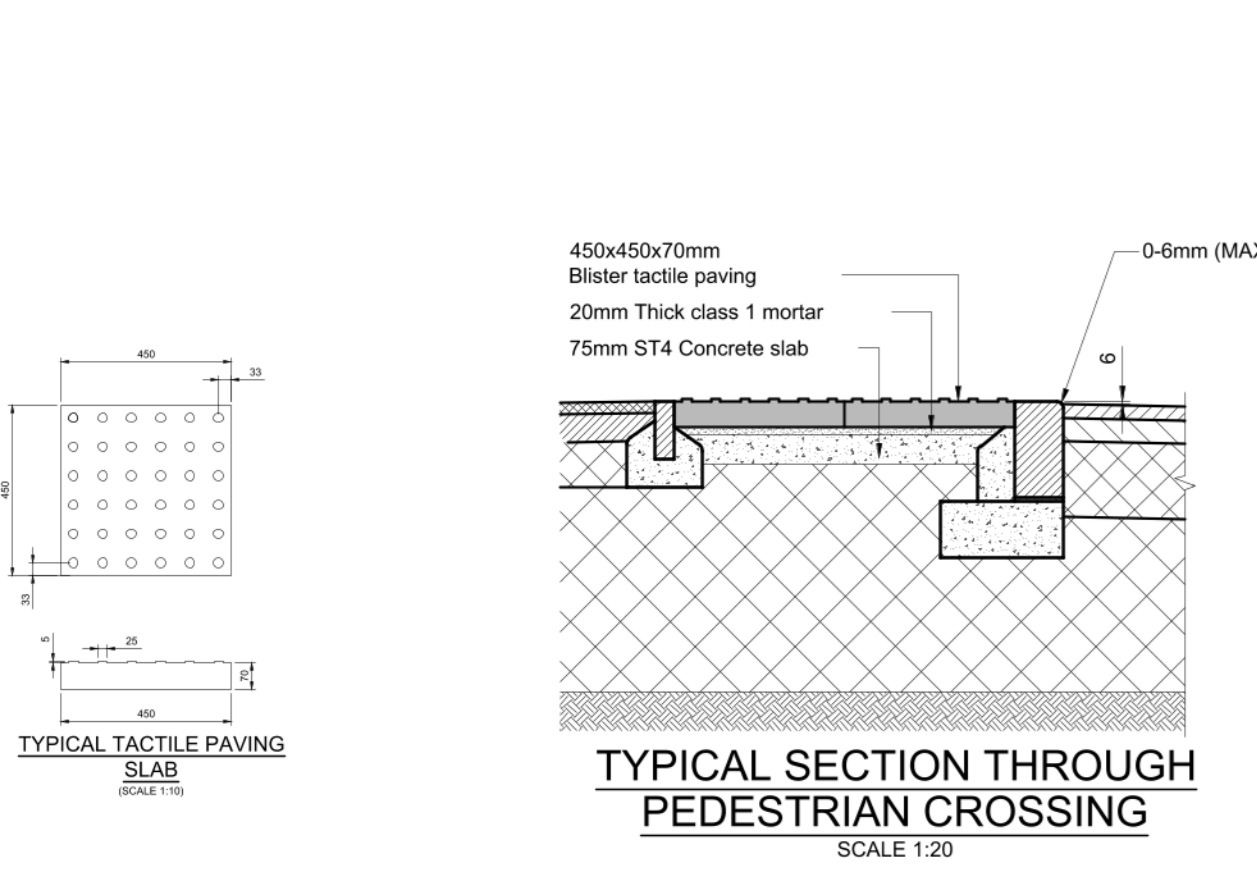
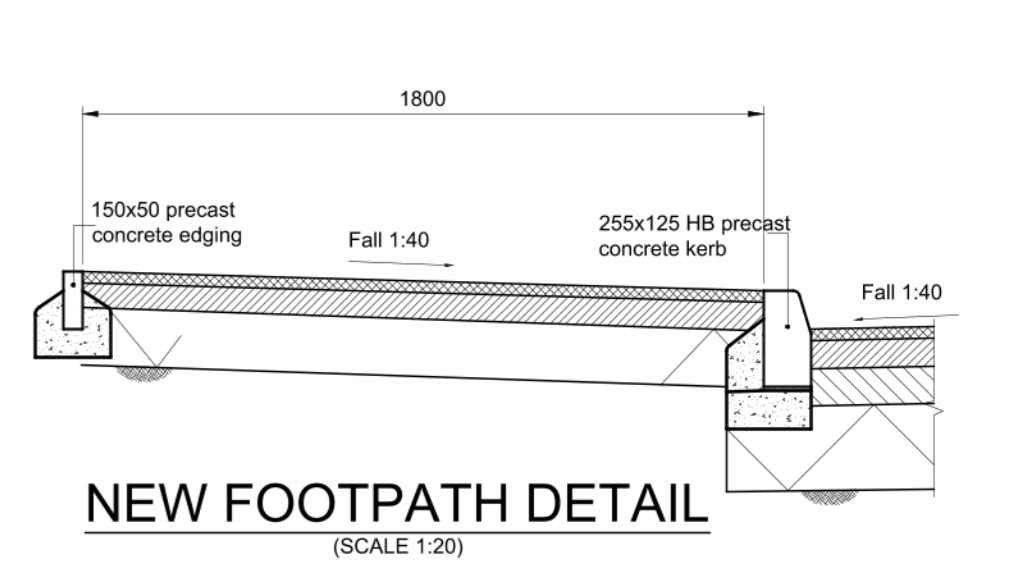
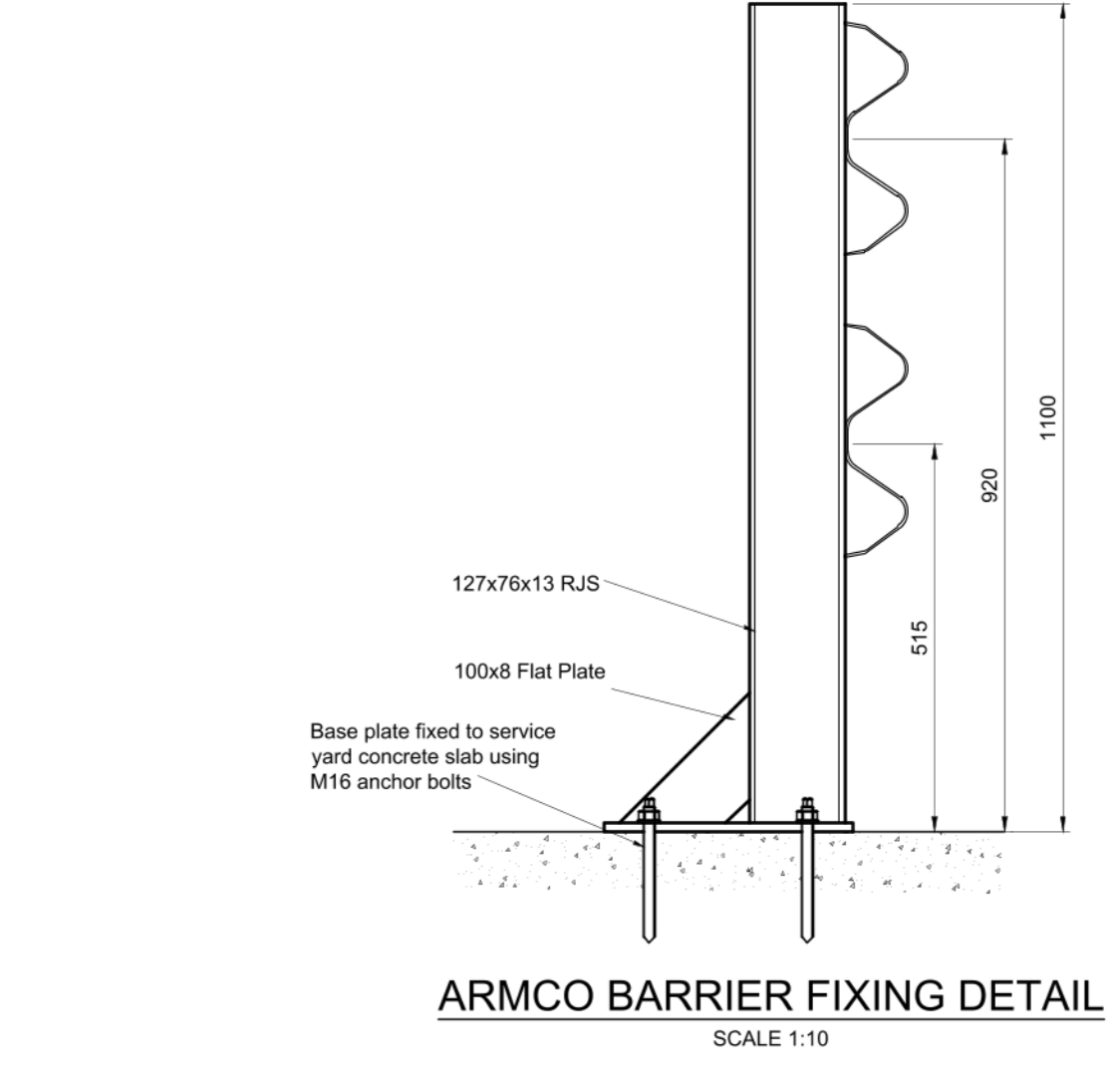
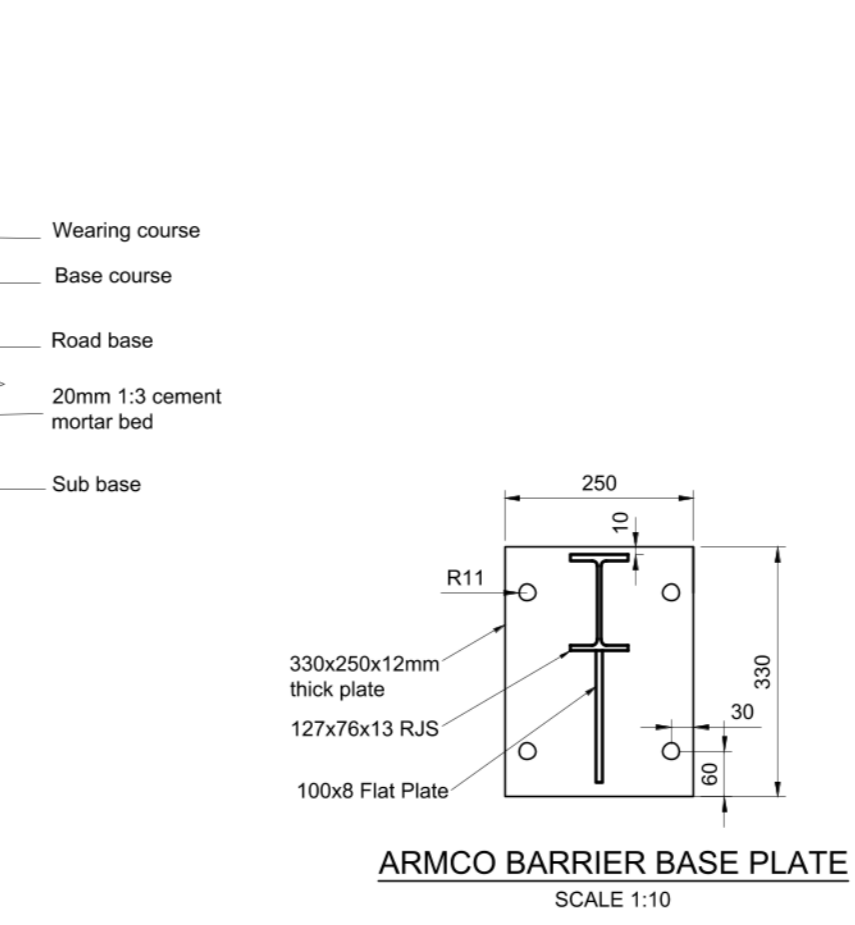
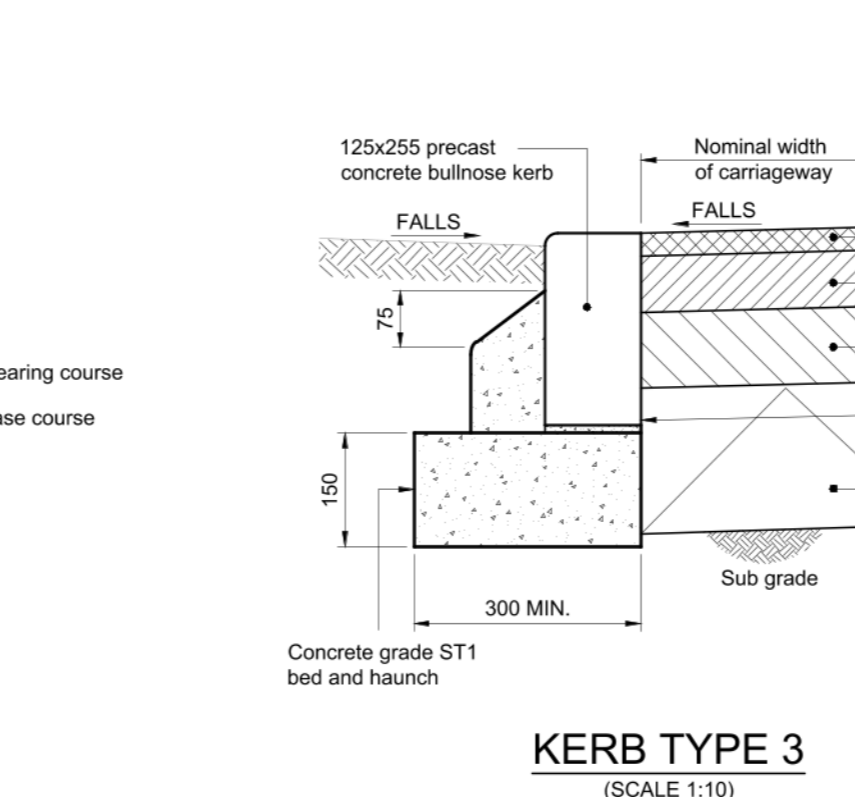
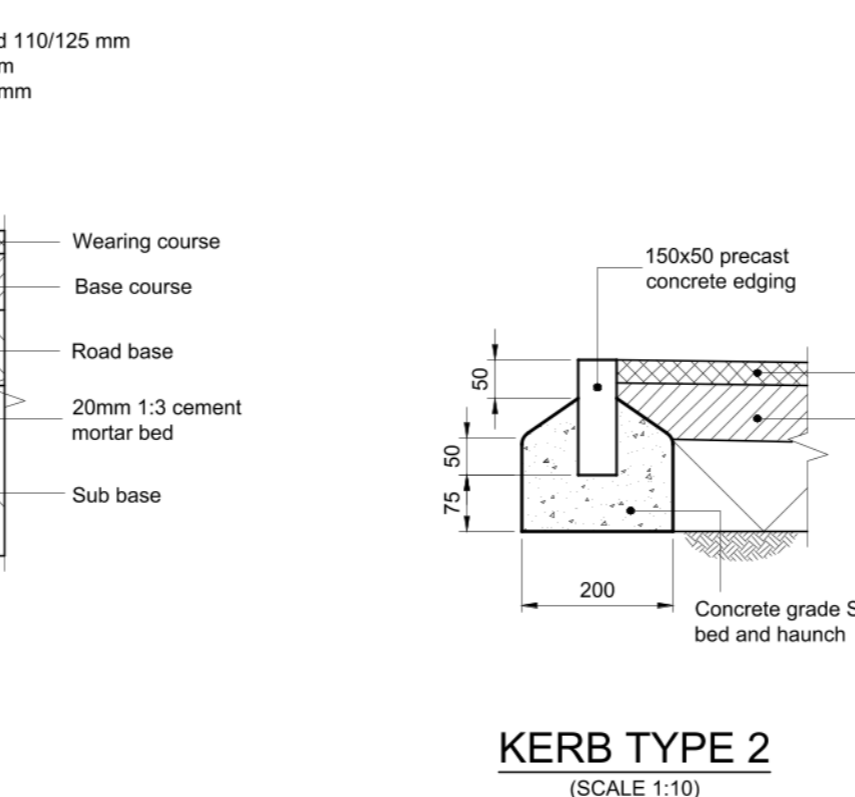
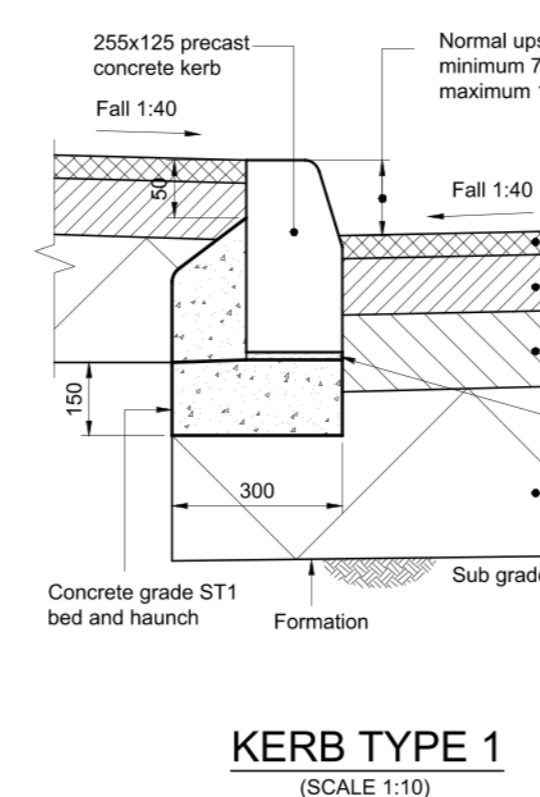
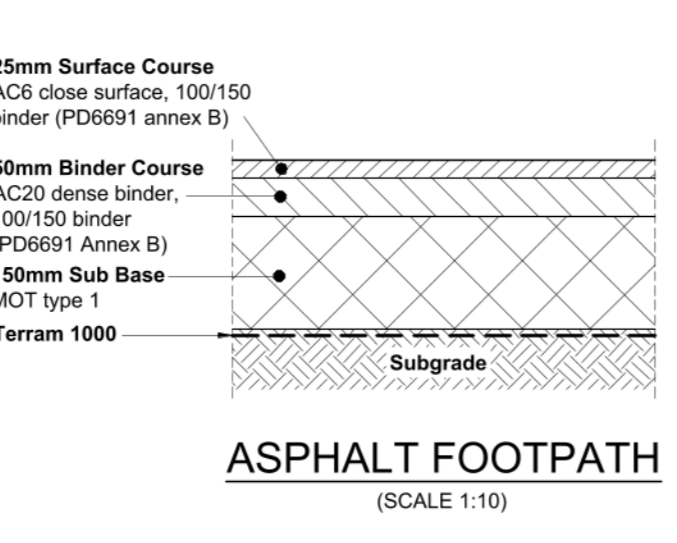
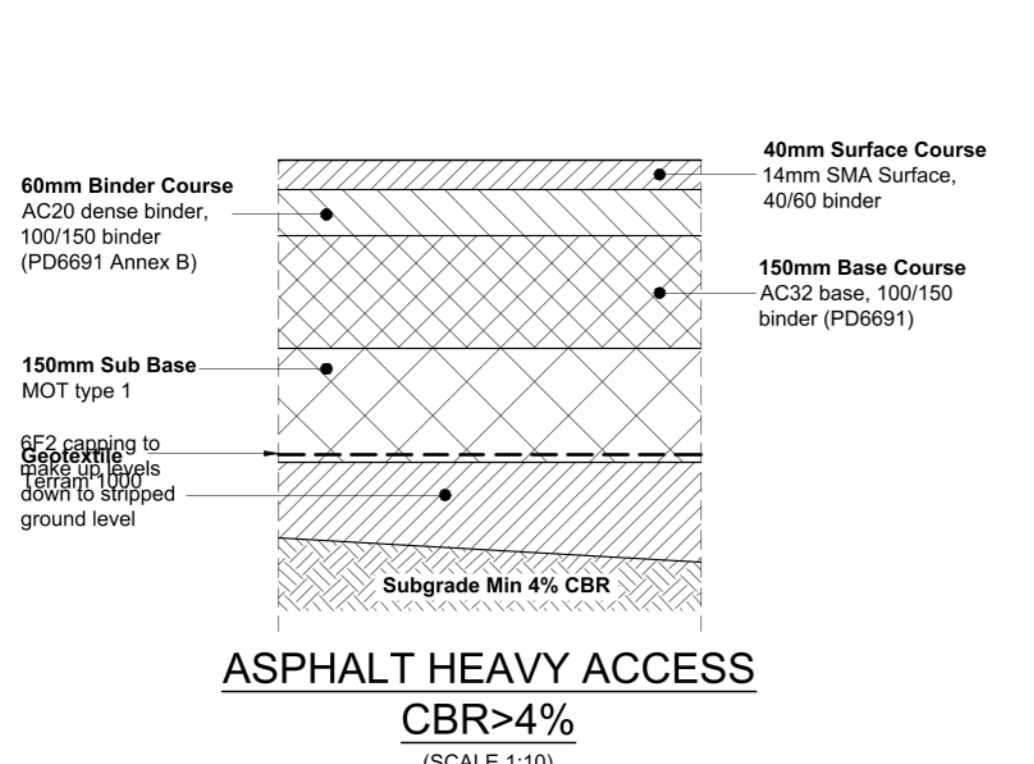
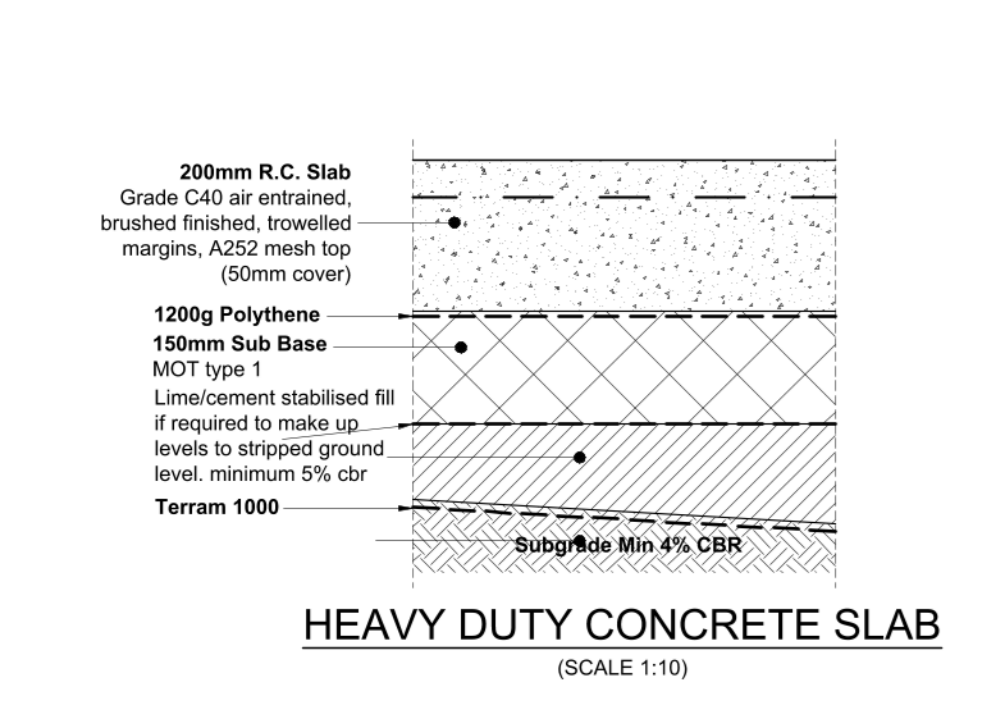
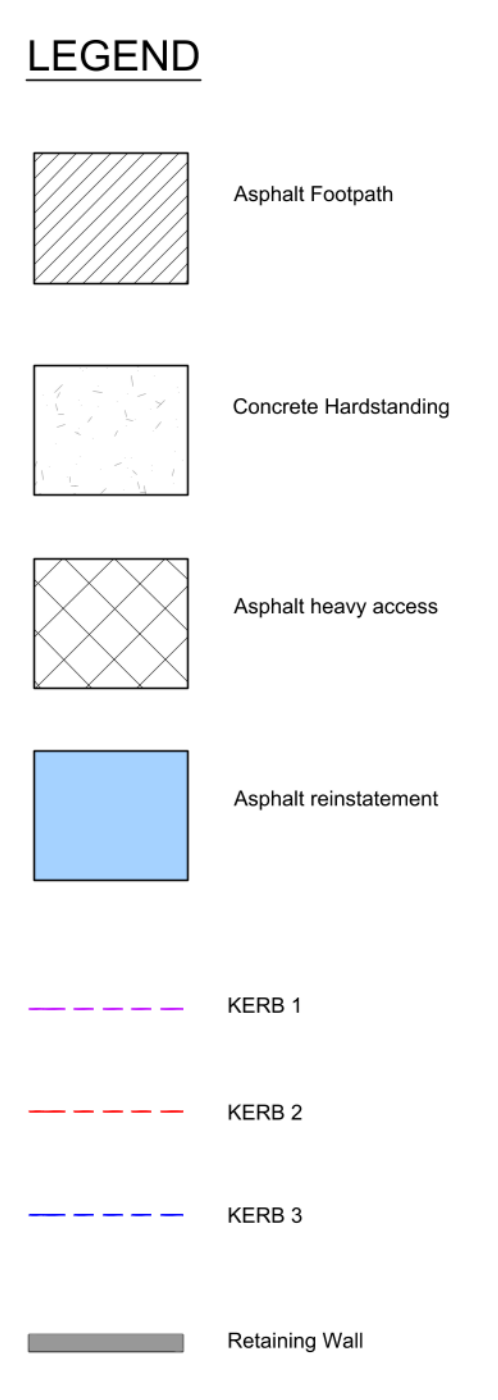


- General Notes**
- This Drawing is to be read in conjunction with all relevant TRP, Architects, Service Engineers and Subcontractor drawings.
 - Review all drawings and report any discrepancies to TRP Consulting prior to commencement.
 - Do not scale from this drawing. All dimensions and levels including any adjustment to existing structures to be checked on site prior to commencement.
 - Work from figured dimensions only.
 - No deviation from details shown on this drawing is allowed without TRP Consulting's prior permission in writing.
 - All work is to be carried out in accordance with the relevant specifications issued by TRP Consulting, British Standard Codes of Practice, Statutory requirements and the Contract Documents.

- Excavation and Earthworks**
- The preparation and treatment of the subgrade to vehicular areas to be in accordance with Highways Agency 'Specification for highway works', clauses 616 and 617.
 - The formation to all vehicle areas is to be formed in firm stable ground free from any roots and any vegetation matter.
 - Any soft areas identified within the formation are to be excavated until firm ground is found and backfilled with a #2 material compacted in 150mm layers in accordance with Highways Agency 'Specification for highway works' clause 802.
 - Type 2 unbound sub-base to be in accordance with Highways Agency 'Specification for highway works', clauses 801 and 804.
 - Type 1 unbound sub-base to be in accordance with Highways Agency 'Specification for highway works', clauses 801 and 803. Granular sub-base is to be spread and levelled in layers and as soon as possible thereafter compact each layer in accordance with Highways Agency 'Specification for highway works' clause 802. All drainage fillings, inspection covers, perimeters and where local excavation and backfilling has taken place. Take particular care to compact fully.
 - Do not use frozen materials or place fill on frozen surfaces. Remove all material affected by frost and replace and recompact if not damaged after thawing.
 - As soon as practicable, cover subgrades and sub-bases with subsequent layers. Prevent degradation by construction traffic, construction operations and inclement weather.
 - Permissible deviation from required levels, falls and cambers (maximum) Subgrades/Roads and parking areas: +20, -30 mm. Footways and recreation areas: ±20 mm. Sub-bases: Roads and parking areas: +120/footways and recreation areas: +12
 - All tamping rollers, wheeler plates and vibrating foot plates are to be used in accordance with manufacturers specification.



P03	Reinstatement area for foul sewer added	11/08/25	AP
P02	Issued for Tender	13/06/25	AP
P01	Issued for Tender	05/05/25	AP
	Description	Date	By
Shed Extension			
External Works GA			
Civil Structural/Environmental Structural/Environmental/Civil Environmental/Civil/Structural			
Basil Chambers, 45 High Street, Manchester, M4 1FS			
0161 839 9113 manchester@trpconsult.com www.trpconsult.com			
Project No:	Drawn By:	Checked:	Date:
7274	AP	TR	10/24
Status:	Description:	Scale:	Sheet:
D2	Issue for Tender	As noted	A0
Revision:	Number:		