

# Edisford Bridge Riverside Park




## Key:

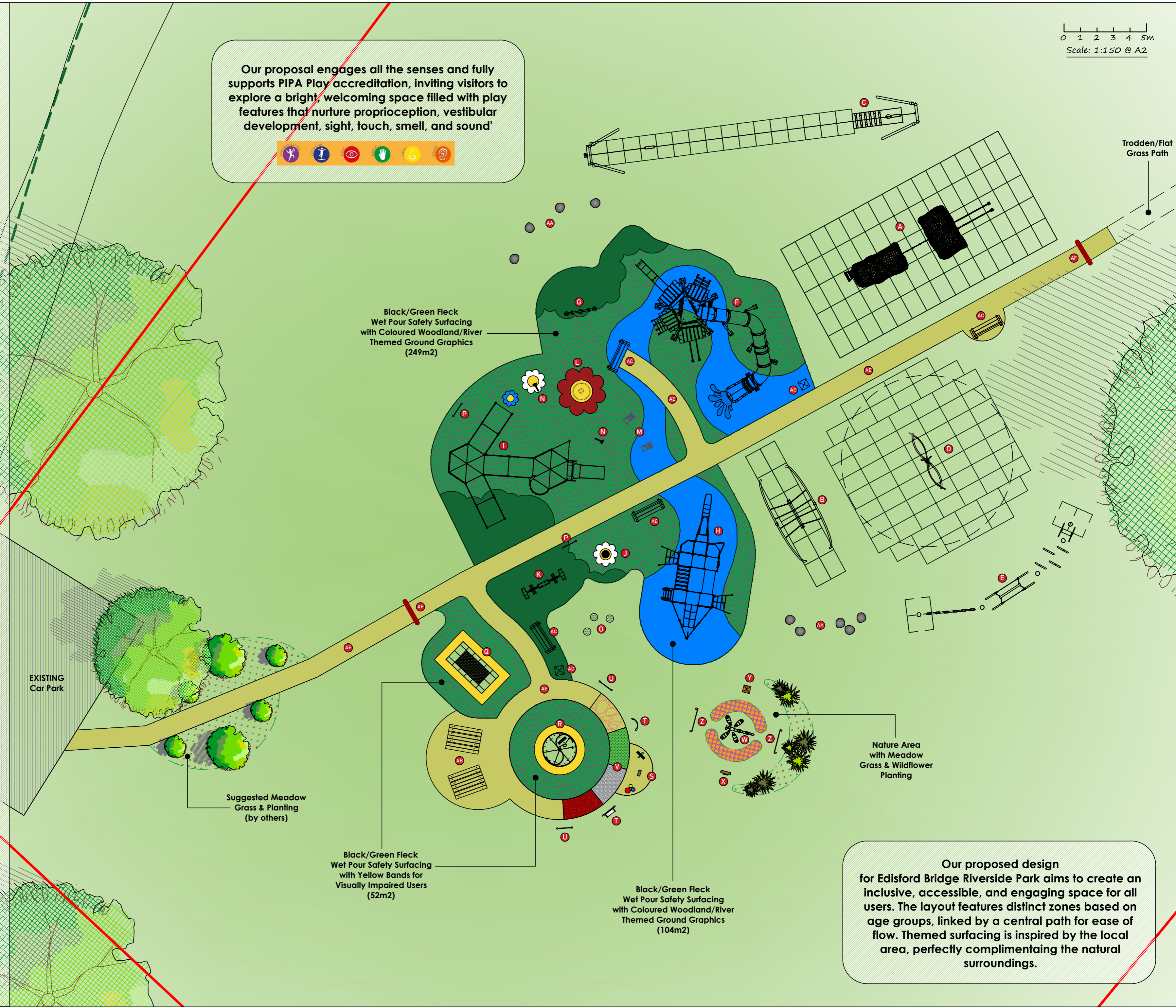
- A. Riverside Rockscapes Bespoke Climbing Rock  
x75 Safety Grass Mats
- B. Crusader Swing  
x12 Safety Grass Mats (wear pad)
- C. 20m Long Zip Wire  
x16 Safety Grass Mats
- D. Hurricane Swing with:  
Button Seat & Trapeze Handle  
x69 Safety Grass Mats
- E. Fantasy Funrun consisting of:  
Switchback Run-Walk the Plank-Icon Crossing  
Rolling Barrel-x5 Rubber Step Posts  
x4 Safety Grass Mats (wear pads)
- F. Pendle Hill Tower Multiplay  
90.5m2 @1.400m FFH
- G. Spin-a-Bounce  
23m2 @1.050m FFH
- H. HMS Edisford Multiplay  
6.5m2 @1.665m FFH, 21.5m2 @1.250m FFH, 28.5m2 @0.975m FFH
- I. Ribble Ramps Wheelchair Accessible Multiplay  
65.5m2 @1.000m FFH
- J. Double Zig-Zag Twister  
10m2 @0.600m FFH
- K. Duck 4Saw Multi-User See-Saw  
14m2 @1.000m FFH
- L. Dual-Axis Rock 'n' Bowl  
14m2 @1.000m FFH
- M. Inclusive Swan Springy & Sit-In Holly Hedgehog Springy  
13.5m2 @0.600m FFH
- N. Pair of Talking Flowers
- O. x3 Magic Toadstools in various heights & colours
- P. x2 Interactive Play Panels:  
Flower Explorer & Tile Slide Fish
- Q. Wheelchair Accessible Ground Flush Trampoline  
25m2 @0.900m FFH
- R. Swirl Wheelchair Accessible Roundabout  
26m2 @1.000m FFH
- S. Musical Area consisting of:  
Double Sided Musical Totem-Rain Wheel-Bongo Tree
- T. Crazy Reflections Mirror Play Panels:  
Topsy Turvy Coming or Going
- U. x2 Interactive Play Panels:  
Sensory-Colour Wheel Kaleidoscope
- V. Sensory Pathway consisting of:  
Crazy Paving-Artificial Grass-Cobbles-Rubber Mulch  
(12m2)
- W. Dragonfly Seating/Balance Sculpture
- X. Double Sided Taste & Smell Totem
- Y. Bug Magnifier Post
- Z. Woodland Finger Maze & River Finger Maze
- AA. Boulder Seating
- AB. x2 Wheelchair Accessible Clifton Picnic Tables
- AC. x4 Phoenix Seats with Arms
- AD. x2 Derby Standard Litter Bins
- AE. 1.2m Wide Conipave Linking Path  
(14.3m @ 10m hard edge)
- AF. x2 Entrance Archways:  
Nature & Ocean Themed

NOTES:  
Conipave for Musical Area = 4.5m2

Our proposal engages all the senses and fully supports PIPA Play accreditation, inviting visitors to explore a bright, welcoming space filled with play features that nurture proprioception, vestibular development, sight, touch, smell, and sound'




OPP No: 16/95852  
ISSUE No: Issue 4  
DATE: 19/05/2026  
DRAWN BY: Designer 2  
NOTE: Artists Illustration Only  
General Reinstatement is Soil & Seed  
Unless Stated Otherwise



Our proposed design for Edisford Bridge Riverside Park aims to create an inclusive, accessible, and engaging space for all users. The layout features distinct zones based on age groups, linked by a central path for ease of flow. Themed surfacing is inspired by the local area, perfectly complimenting the natural surroundings.