

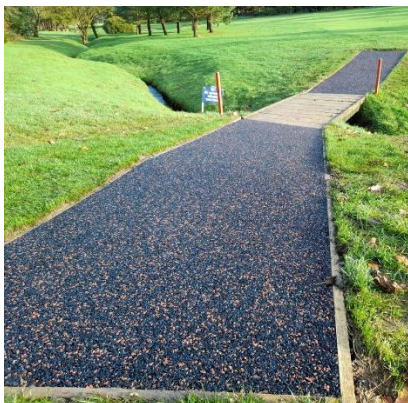
Ribble Valley Borough Council – Materials Schedule

Wet Pour Safety Surfacing – Coloured



- Uses Virgin Rubber with variable depth in relation to relevant free fall heights (FFH)
 - o SBR Base layer, with an EPDM top layer.
- Black Wet Pour uses recycled rubber (EcoFleck)
- Laid onto prepared MOT Type 1 Stone base works
- Used as impact-absorbing safety surfacing connected to the multiplay units.
- Varied colours (Greens, Sky Blue)

Conipave Pathways (Black with Yellow/Beige Fleck)



- Provides much the same permeability as Wet Pour for pathways.
- SUDS (Sustainable Urban Development Systems) compliant.

- Can use the same bases as Wet Pour.
- More textured and porous than Wet Pour, used for the main pathway.
- More appropriate for pathway as it is less shock absorbent than Wet Pour.

Safety Grass Mats



- A type of safety surfacing laid over naturally growing grass to provide support.
- Virtually disappears as grass grows, retains the impact absorption.
- Used on the periphery of the play area to provide impact protection for other equipment
- Installed onto topsoil using ground fixings.

Archways



- Timber construction
- Height: 2242mm (~2.25m)
- Defining feature for both entrances of the Conipave pathway.