

Edisford Bridge Riverside Park



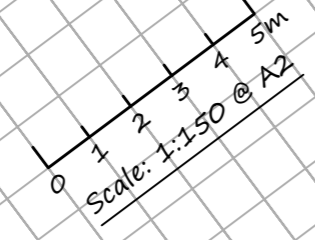
Key:

- A. Riverside Rockscapes Bespoke Climbing Rock
x75 Safety Grass Mats
- B. Crusader Swing
x12 Safety Grass Mats (wear pad)
- C. 20m Long Zip Wire
x16 Safety Grass Mats
- D. Hurricane Swing with:
Button Seat & Trapeze Handle
x69 Safety Grass Mats
- E. Fantasy Funrun consisting of:
Switchback Run-Walk the Plank-Icon Crossing
Rolling Barrel-x5 Rubber Step Posts
x4 Safety Grass Mats (wear pads)
- F. Pendle Hill Tower Multiplay
90.5m2 @1.600m FFH
- G. Spin-a-Bounce
23m2 @1.050m FFH
- H. HMS Edisford Multiplay
6.5m2 @1.665m FFH, 21.5m2 @1.250m FFH, 26.5m2 @0.990m FFH
- I. Ribble Ramps Wheelchair Accessible Multiplay
65.5m2 @1.000m FFH
- J. Double Zig-Zag Twister
10m2 @0.600m FFH
- K. Duck 4Saw Multi-User See-Saw
14m2 @1.090m FFH
- L. Dual-Axis Rock 'n' Bowl
14m2 @1.000m FFH
- M. Inclusive Swan Springy & Sit-In Holly Hedgehog Springy
13.5m2 @0.600m FFH
- N. Pair of Talking Flowers
- O. x3 Magic Toadstools in various heights & colours
- P. x2 Interactive Play Panels:
Flower Explorer & Tile Slide Fish
- Q. Wheelchair Accessible Ground Flush Trampoline
25m2 @0.900m FFH
- R. Swirl Wheelchair Accessible Roundabout
26m2 @1.000m FFH
- S. Musical Area consisting of:
Double Sided Musical Totem-Bain Wheel-Bongo Tree
- T. Crazy Reflections Mirror Play Panels:
Topsy Turvy-Coming or Going
- U. x2 Interactive Play Panels:
Sensory-Colour/Wheel Kaleidoscope
- V. Sensory Pathway consisting of:
Crazy Paving-Artificial Grass-Cobbles-Rubber Mulch
(12m2)
- W. Dragonfly Seating/Balance Sculpture
- X. Double Sided Taste & Smell Totem
- Y. Bug Magnifier Post
- Z. Woodland Finger Maze & River Finger Maze
- AA. Boulder Seating
- AB: x2 Wheelchair Accessible Clifton Picnic Tables
- AC. x4 Phoenix Seats with Arms
- AD. x2 Derby Standard Litter Bins
- AE. 1.2m Wide Wet Pour Linking Path
(145m2)
- AF. x2 Entrance Archways:
Nature & Ocean Themed


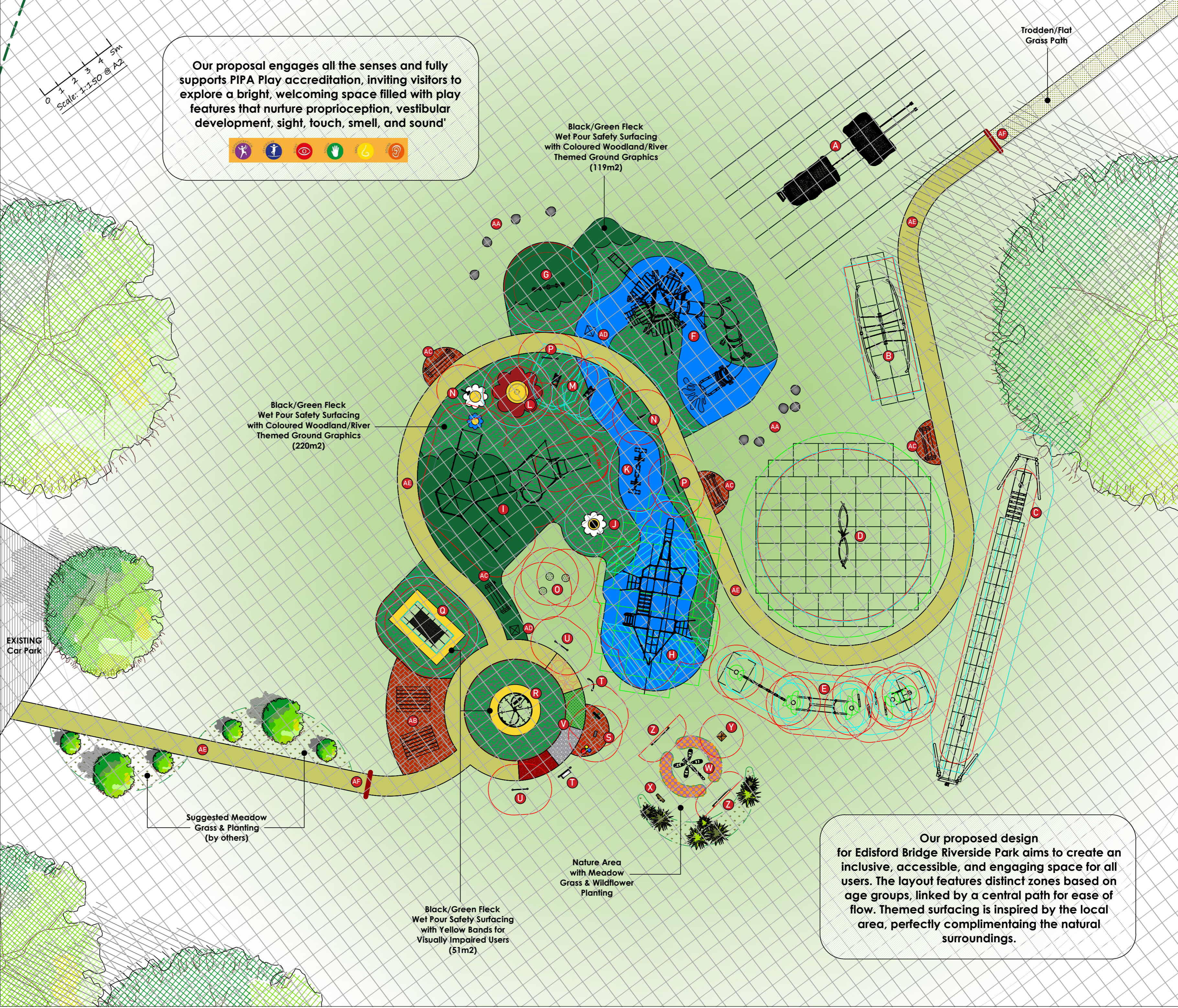
NOTES:
Block Paving for Seating & Musical Area = 34m2



OPP No: 16/95852
ISSUE No: Issue 1
DATE: 01/08/2025
DRAWN BY: Designer 2
NOTE: Artists Illustration Only
General Reinstatement is Soil & Seed
Unless Stated Otherwise



Our proposal engages all the senses and fully supports PIPA Play accreditation, inviting visitors to explore a bright, welcoming space filled with play features that nurture proprioception, vestibular development, sight, touch, smell, and sound'

Our proposed design for Edisford Bridge Riverside Park aims to create an inclusive, accessible, and engaging space for all users. The layout features distinct zones based on age groups, linked by a central path for ease of flow. Themed surfacing is inspired by the local area, perfectly complimenting the natural surroundings.