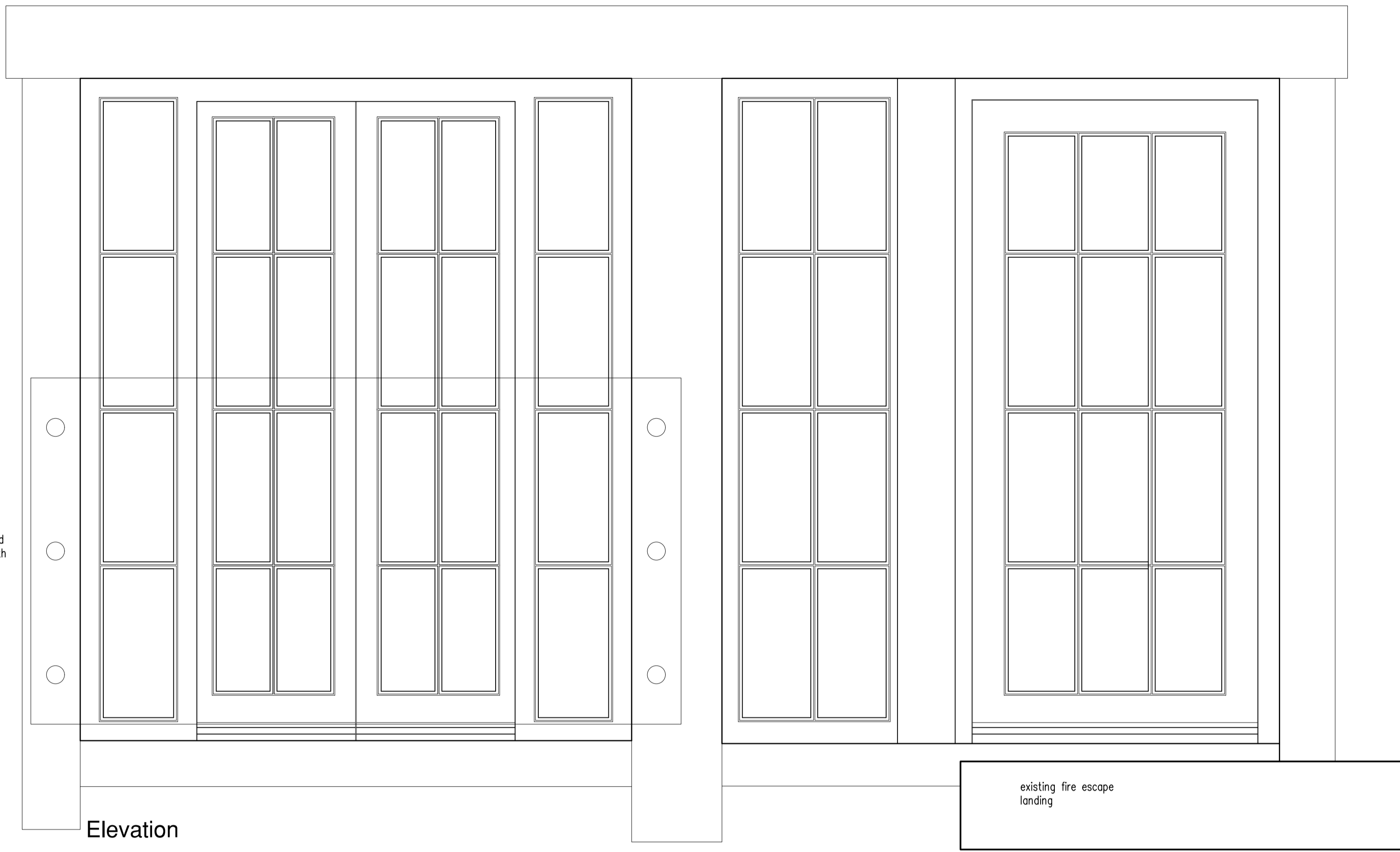


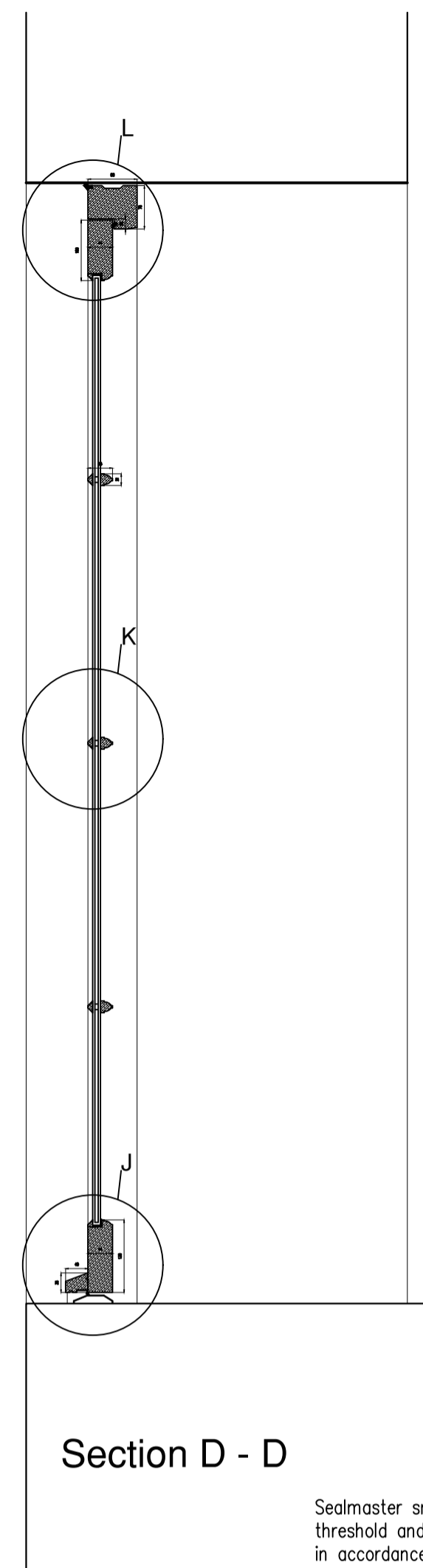
Section C - C

clear toughened glazed balustrade 1.1m high above threshold secured to existing masonry with stainless steel circular fixings

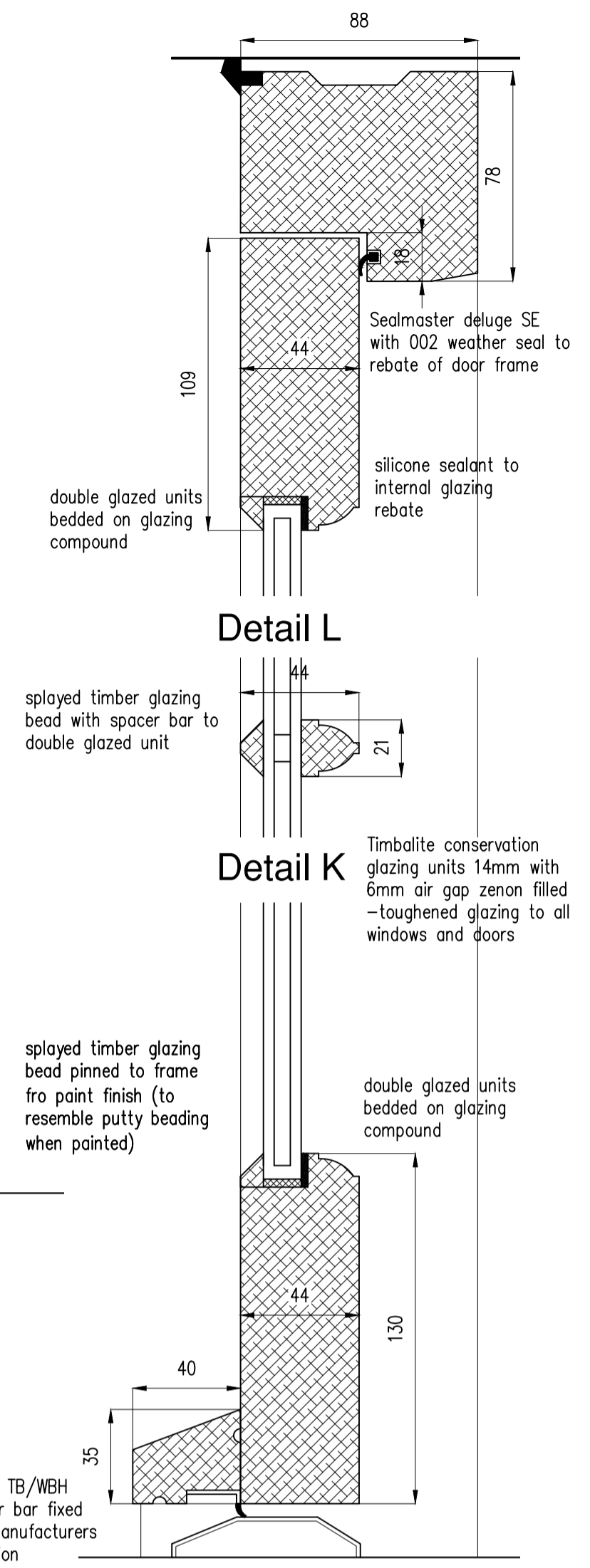


Elevation

existing fire escape landing



Section D - D



Detail L

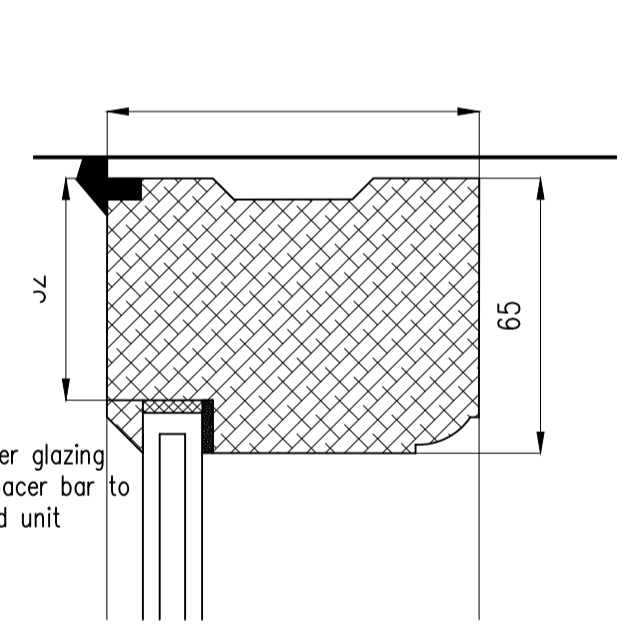
Detail K

Detail J

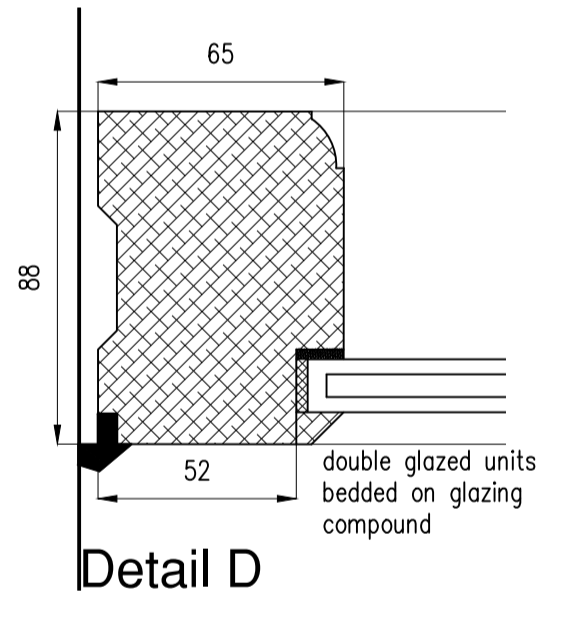
Sealmaster smartseal TB/WBH threshold and weather bar fixed in accordance with manufacturers details and specification

GENERAL

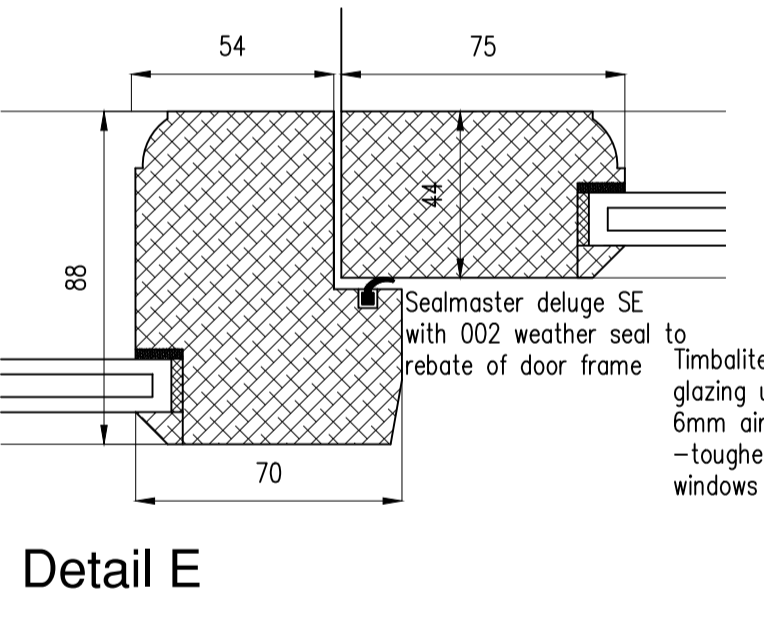
All doors formed in hw with paint finish.
 Masticealant at abutment with masonry surrounds painted in with window frames
 Colour of all doors and windows white to match existing



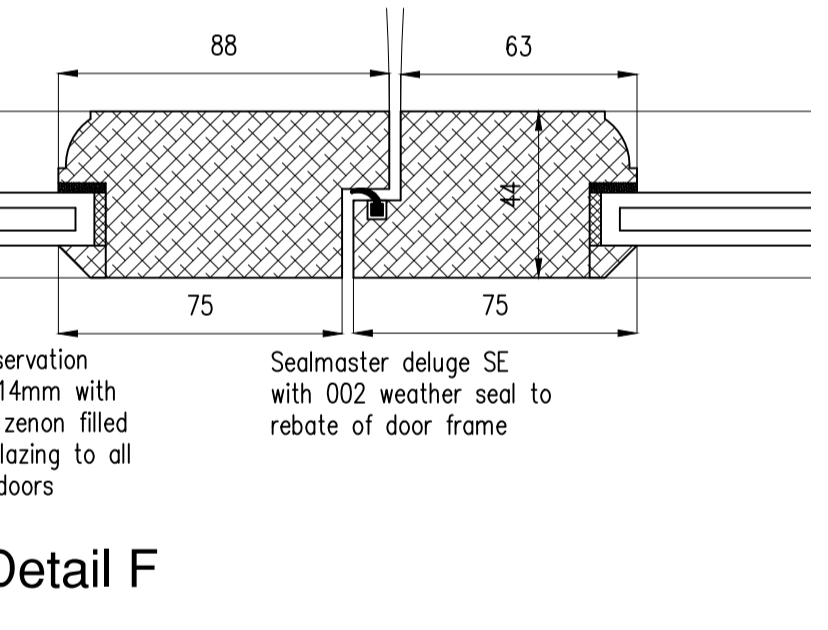
Detail C



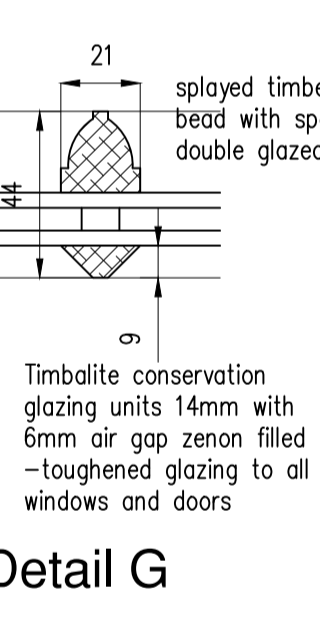
Detail D



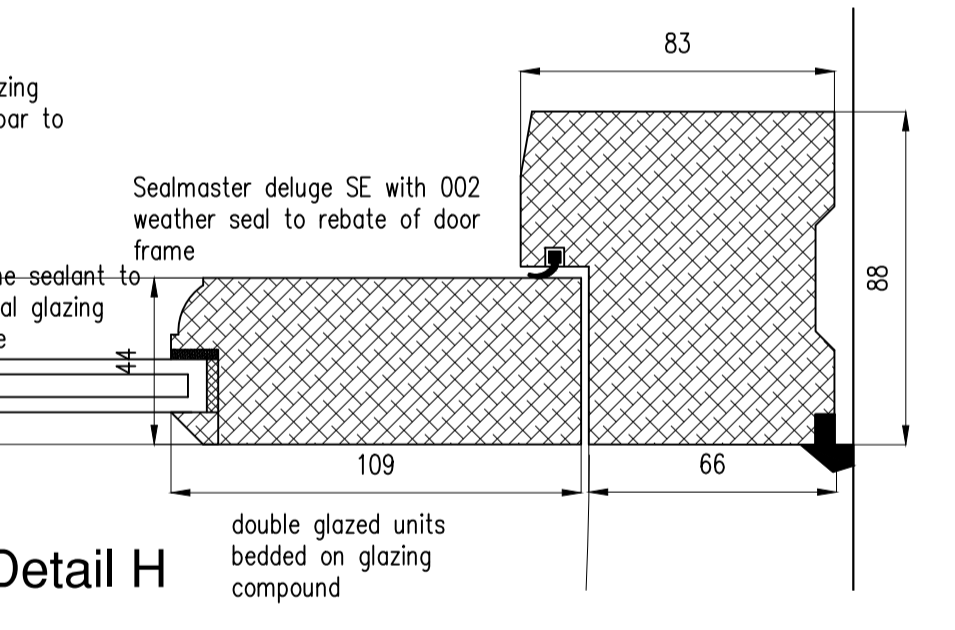
Detail E



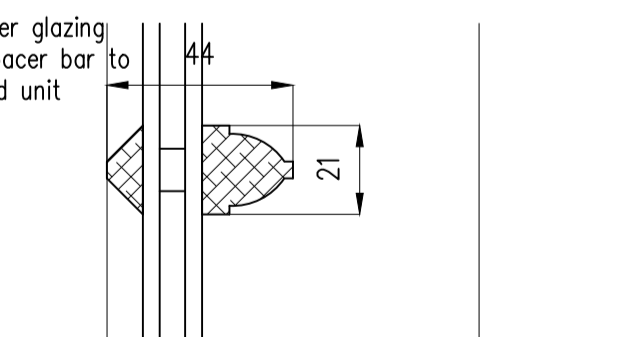
Detail F



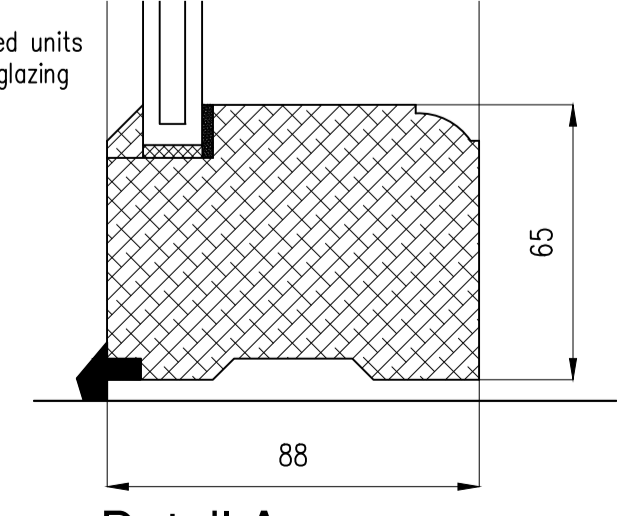
Detail G



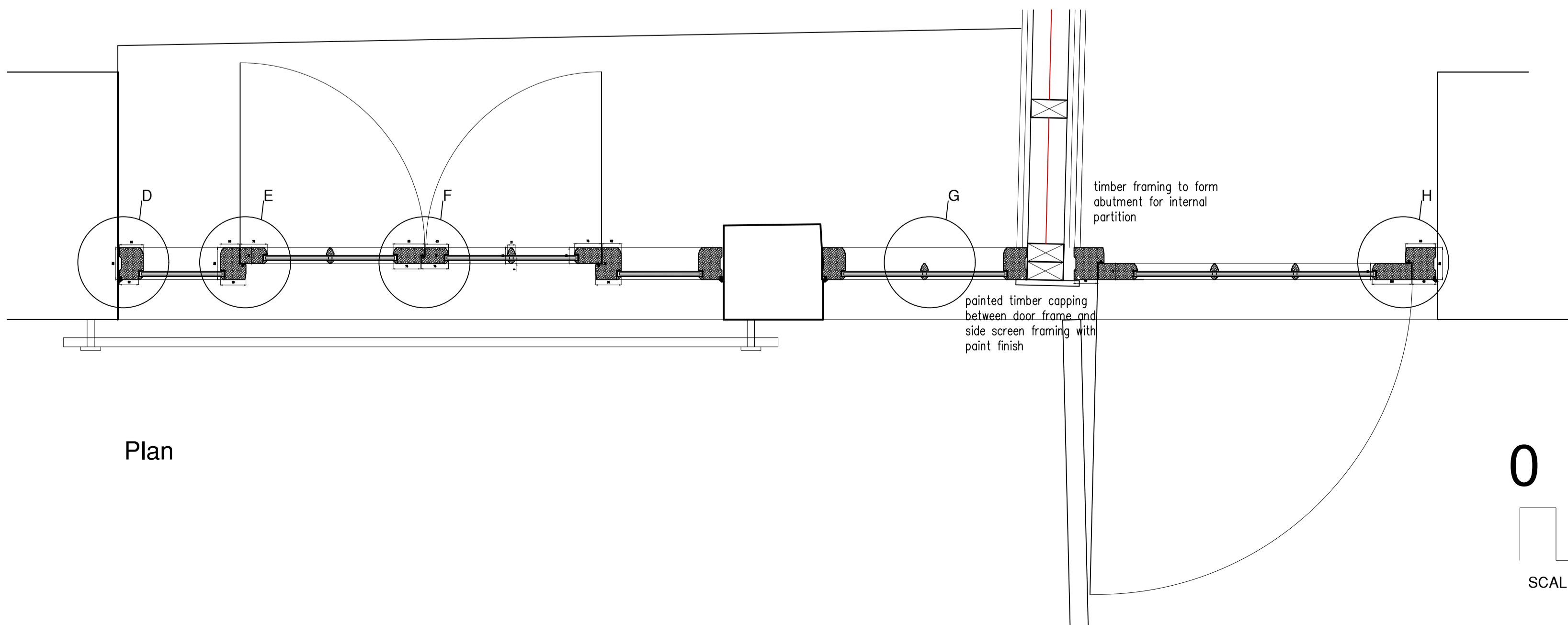
Detail H



Detail B



Detail A



Plan

timber framing to form abutment for internal partition

pointed timber capping between door frame and side screen framing with paint finish

0 0.5M 1M

SCALE BAR 1:10

Revision	Date

Stephen Craven Building Design Ltd
 Chartered Architectural Technologist and Building Design Consultant
 Settle North Yorkshire
 Tel 01729 824754 Mobile 07763 766702
 E-Mail stephen.craven@tiscali.co.uk
 www.stephencraven.org



job:
 Proposed Second Floor Refurbishment
 Swan & Royal
 26 Castle Street
 Clitheroe, BB7 2BX
client:

drawing:
 Window and Doors
 Joinery Details

scale: 1:10, 1:2 @ A1	date: 02/26	drawn: smc
job no: 02/2026	drawing no: 12	-