


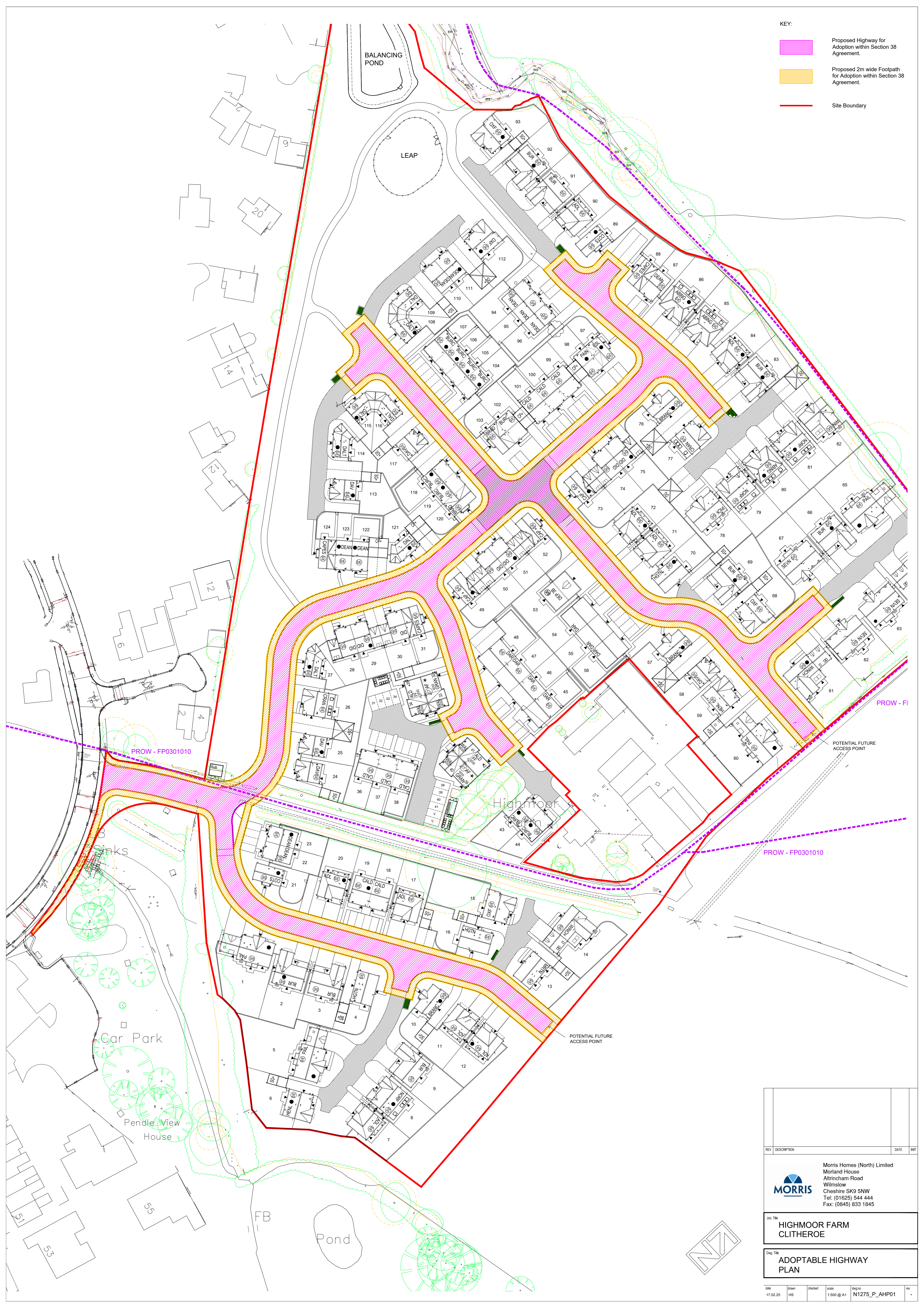


- KEY:
-  Proposed Highway for Adoption within Section 38 Agreement.
 -  Proposed 2m wide Footpath for Adoption within Section 38 Agreement.
 -  Site Boundary



PROW - FP0301010

PROW - FI

PROW - FP0301010

POTENTIAL FUTURE ACCESS POINT

POTENTIAL FUTURE ACCESS POINT

REV	DESCRIPTION	DATE	INT
 <p>Morris Homes (North) Limited Morland House Altrincham Road Wilmslow Cheshire SK9 5NW Tel: (01625) 544 444 Fax: (0845) 833 1845</p>			
330 Title HIGHMOOR FARM CLITHEROE			
Dwg Title ADOPTABLE HIGHWAY PLAN			