

# Highmoor Farm, Clitheroe LEAP

Morris Homes

## SITE INFORMATION:

Site leveling and groundworks by others

Softworks by others.

All planting works shown are assumed to be completed by others

Tarmac - Binder Course: 50mm, Wearing Course: 25mm laid onto 100mm MOT type 1 with PCC edging. **\*\*\*Suggested to be by others.\*\*\***

Mounding up to 1m high created using spoil from site excavations. Additional fill and topsoil by others if required. **\*\*\*Suggested to be by others.\*\*\***

Grass matting safety surfacing to areas where CFH is greater than 1.5m or required to reduce wear. Over 2.0m CFH will include a shockpad.

1m high Play Spec bowtop fencing, galvanised & Powder-coated finish.

1m high 1.2m wide sprung self closing gate, galvanised and powder-coated Yellow.

1m high, 3.0m wide sprung Combination double gate c/w lockable/removable centre post, galvanised and powdercoated Yellow.

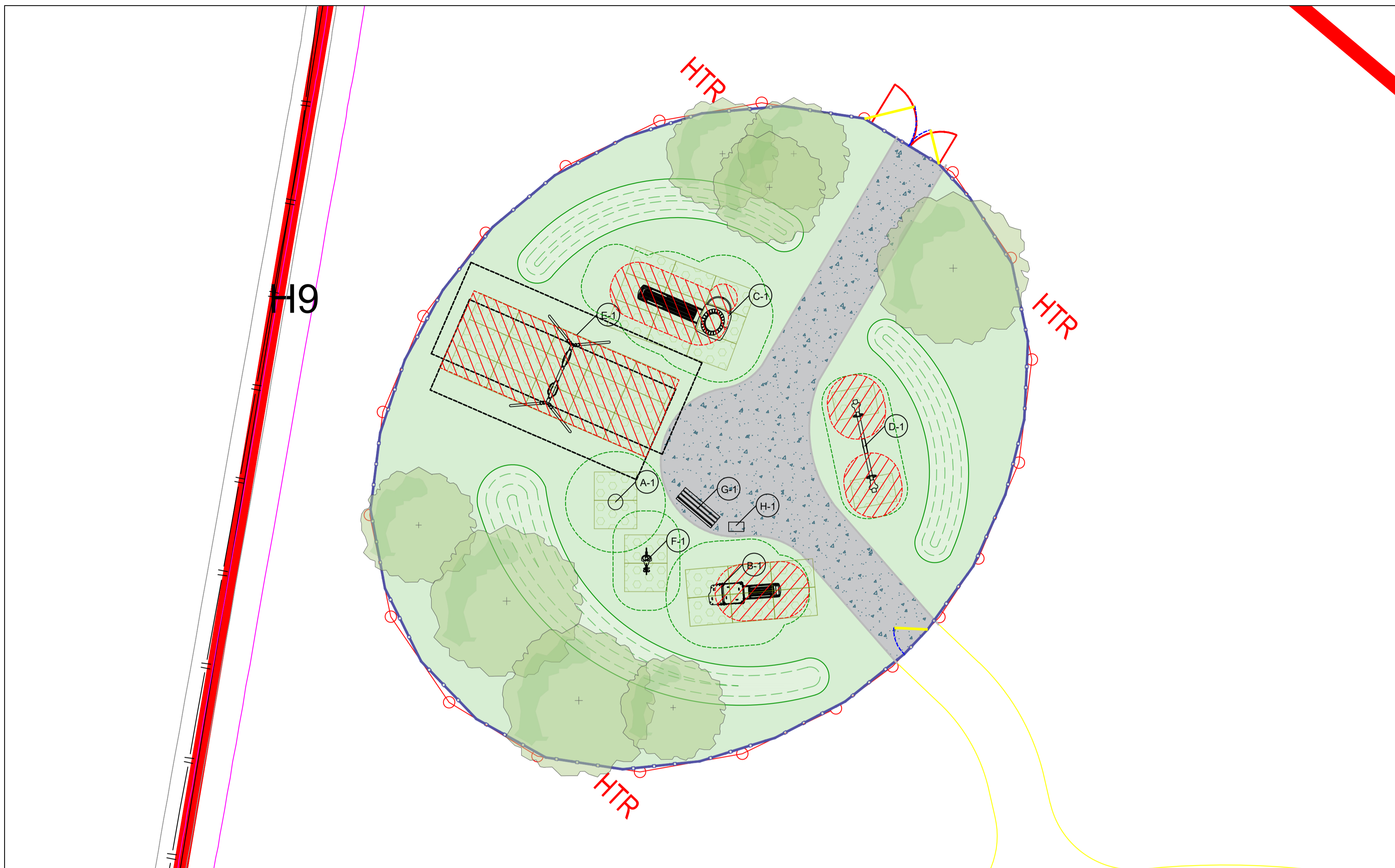
Kompan may have advised relocation of equipment, on this plan, to ensure compliance to BS-EN1176 and best practice guidelines.

This layout assumes all site levels are flat, stable, and fully prepared by others prior to installation (Unless stated on the plan or quotation documentation). Any undisclosed variations or deviations from these assumptions may affect installation methods, scheduling, and associated costs. Any such deviations should be reported to Kompan immediately.

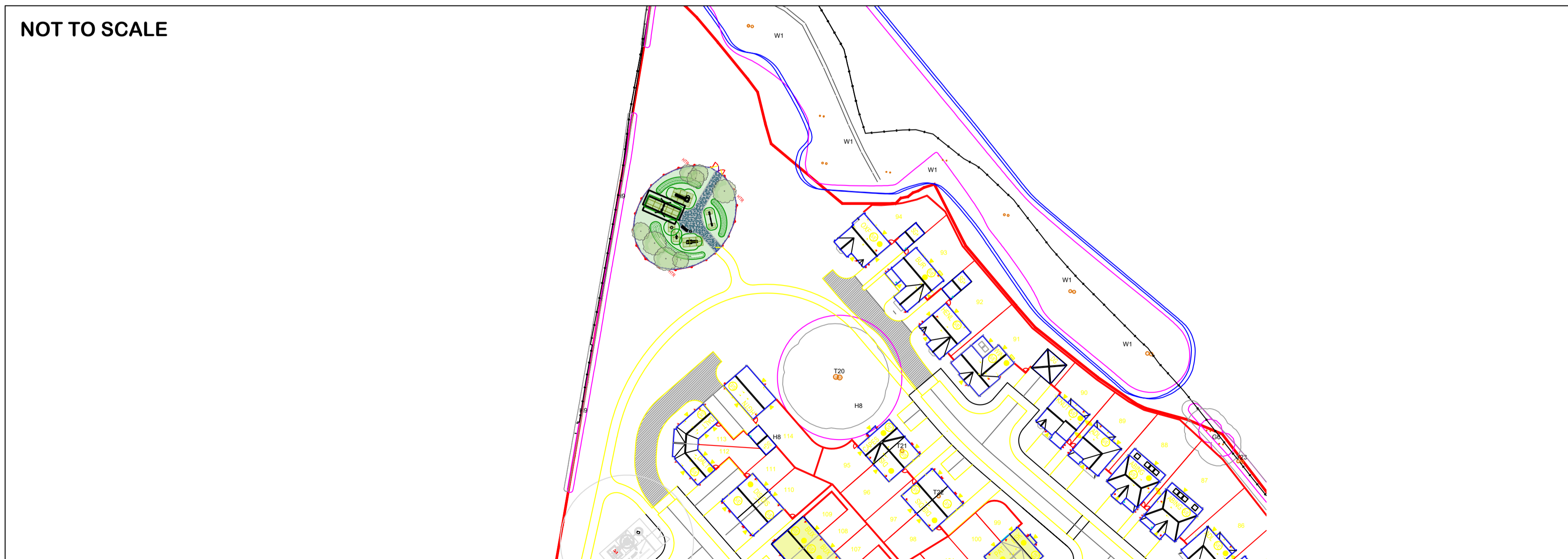
Kompan assumes all softworks, pathways, landscaping & groundworks are to be completed by others to the specified requirements on this plan at the point of installation (unless specified on the plan & quotation)

## Landscaping Recommendation:

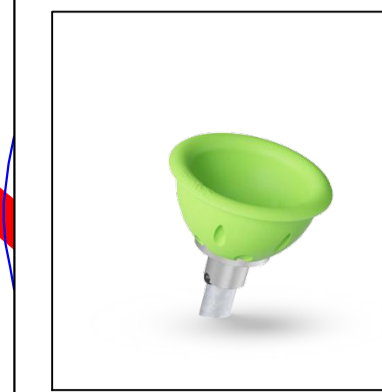
Kompan recommend laying good quality topsoil and high-grade turf to all play areas, particularly where grass mat safety surfacing is used. This ensures optimal performance, longevity, and safety of the surfacing.



NOT TO SCALE



## EQUIPMENT:



**A Spinner Bowl**  
Ref: ELE400024-xx17LG  
Fall Height: 100 cm  
Total Height: 60 cm  
Age Span: 4+  
Inclusive: Yes  
Count: 1



**B Play Tower**  
Ref: KPL101211\_20414507  
Fall Height: 100 cm  
Total Height: 142 cm  
Age Span: 1+  
Inclusive: Yes  
Count: 1



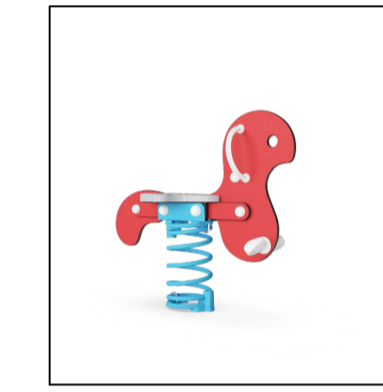
**C Play Tower with Climbing Wall**  
Ref: KPL101621\_20419785  
Fall Height: 148 cm  
Total Height: 372 cm  
Age Span: 6+  
Inclusive: No  
Count: 1



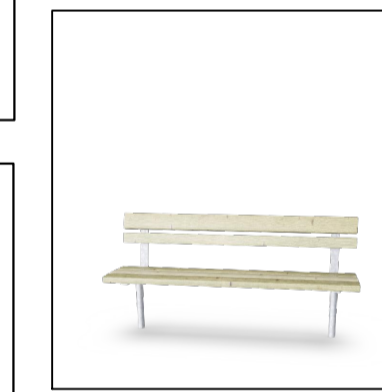
**D Seesaw with Tyres**  
Ref: KPL112-xx02  
Fall Height: 112 cm  
Total Height: 102 cm  
Age Span: 3+  
Inclusive: No  
Count: 1



**E Cradle & Flat Swing**  
Ref: KSW902\_20417959  
Fall Height: 145 cm  
Total Height: 271 cm  
Age Span: 2+  
Inclusive: No  
Count: 1



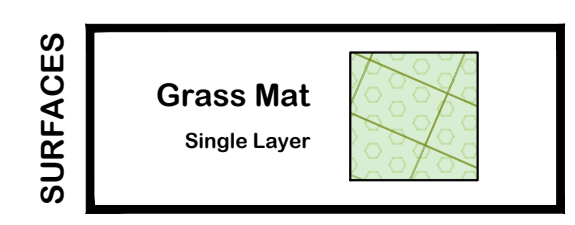
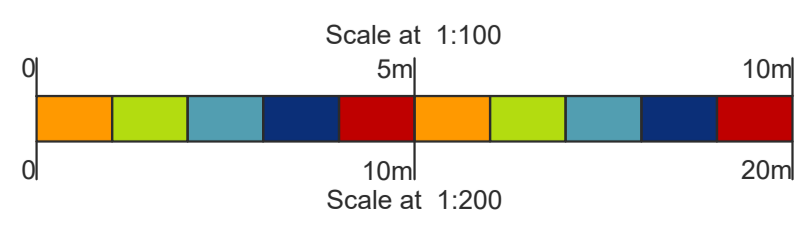
**F Crazy Hen**  
Ref: M10170-xxP  
Fall Height: 60 cm  
Total Height: 77 cm  
Age Span: 1+  
Inclusive: Yes  
Count: 1



**G Chatter Bench with Backrest**  
Ref: PAR1151-xx11  
Fall Height: 0 cm  
Total Height: 78 cm  
Age Span: -  
Inclusive: No  
Count: 1



**H 90 Litre Steel Litter Bin Black**  
Ref: EN-WB MLB90 BIN  
Fall Height: 0 cm  
Total Height: 91 cm  
Age Span: n/a  
Inclusive: n/a  
Count: 1



Make your play area offering the Greenest it can be, see how we can help with that. Scan here.

Design assumes the site will be levelled by other (max. gradient 1:100), free draining and with good access  
Quotation and design is submitted site unseen, we reserve the right, following a full site survey to amend the design appropriately.  
Areas and dimensions shown are critical for compliance with European safety standards EN1176 & EN1177, if in doubt ask.  
Grass areas should be well established prior to grass mat safety surfacing being laid.