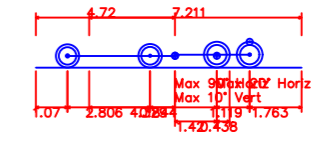
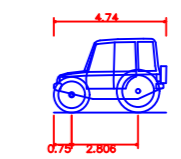




Vehicle Used in the Swept Paths Analysis



Farm tractor & trailer	9.022m
Overall Length	2.500m
Overall Width	0.438m
Overall Body Height	0.398m
Min Body Ground Clearance	2.500m
Max Track Width	4.00s
Lock to lock time	4.620m
Kerb to Kerb Turning Radius	



Case IH CVX 160 Tractor	4.740m
Overall Length	2.350m
Overall Width	3.17m
Overall Body Height	0.572m
Min Body Ground Clearance	6.820m
Max Track Width	6.00s
Lock to lock time	5.400m
Kerb to Kerb Turning Radius	

Notes

- Vehicle includes farm tractor, 4.7m long and farm trailer.

Revisions

Client
Mr D. Parkin



Scheme
Agricultural Building, Longridge Road, Chipping

Title
Swept Paths - Tractor & Trailer

Drawn	Checked	Date
N.Peet	M.Peet	9.1.2025
Project	Drawing No	Scale
601-24	601-24-1	1:500 @ A1