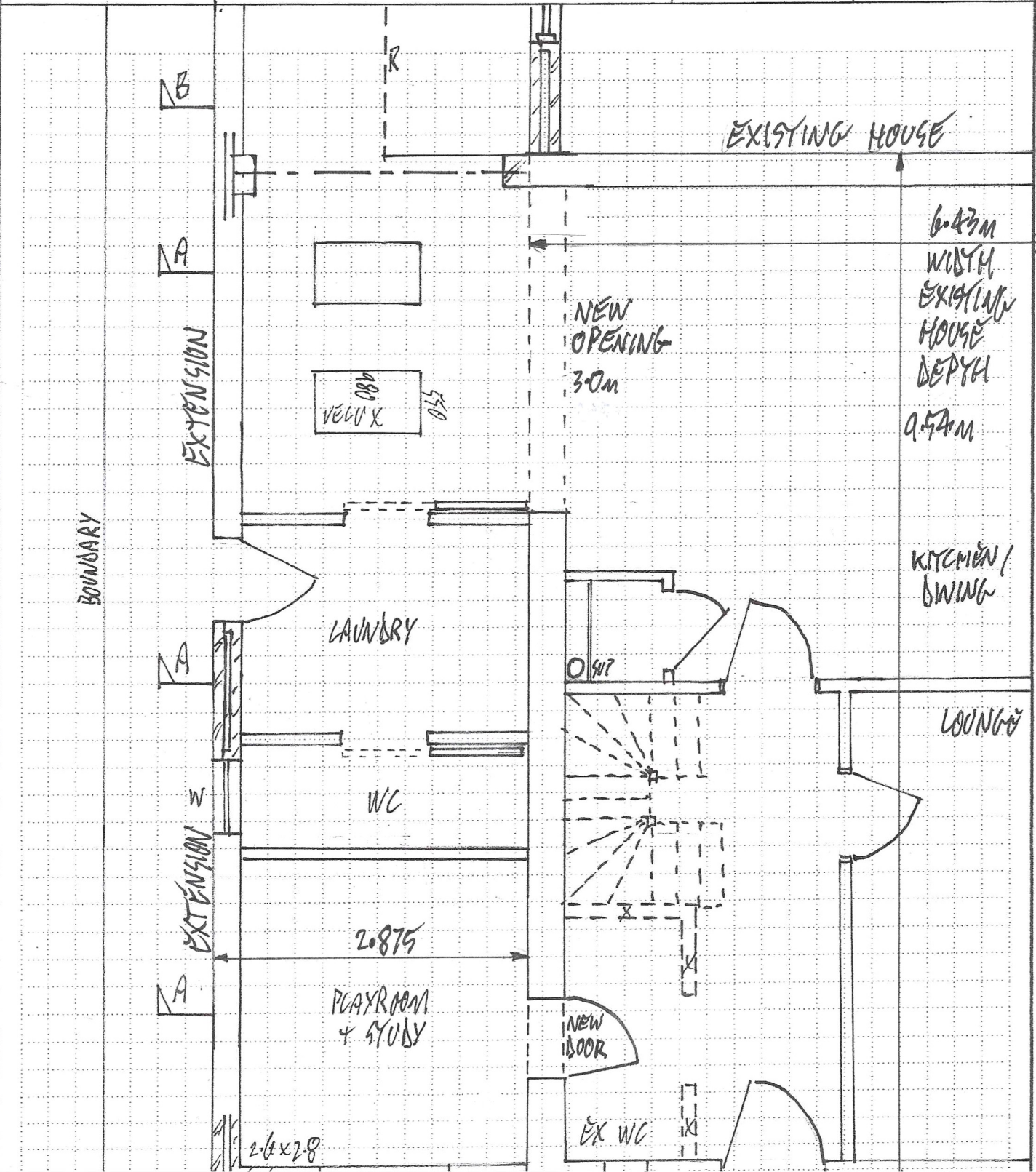


# SHEPHERD • GILMOUR

• Consulting Engineers

Project:	3 POPLAR WAY, BARRON, CLITHEROE	Project No:	Sheet No:	Rev:
Location:	EXTENSION PLAN - FRONT	By:	WUB	Date: FEB 26
		Checked:		Approved:



A4  
1:50

# SHEPHERD • GILMOUR

• Consulting Engineers

Project: 3 POPLAR WAY, BARRON, CUTHBERT

Project No:

Sheet No: SK-P2

Rev: A

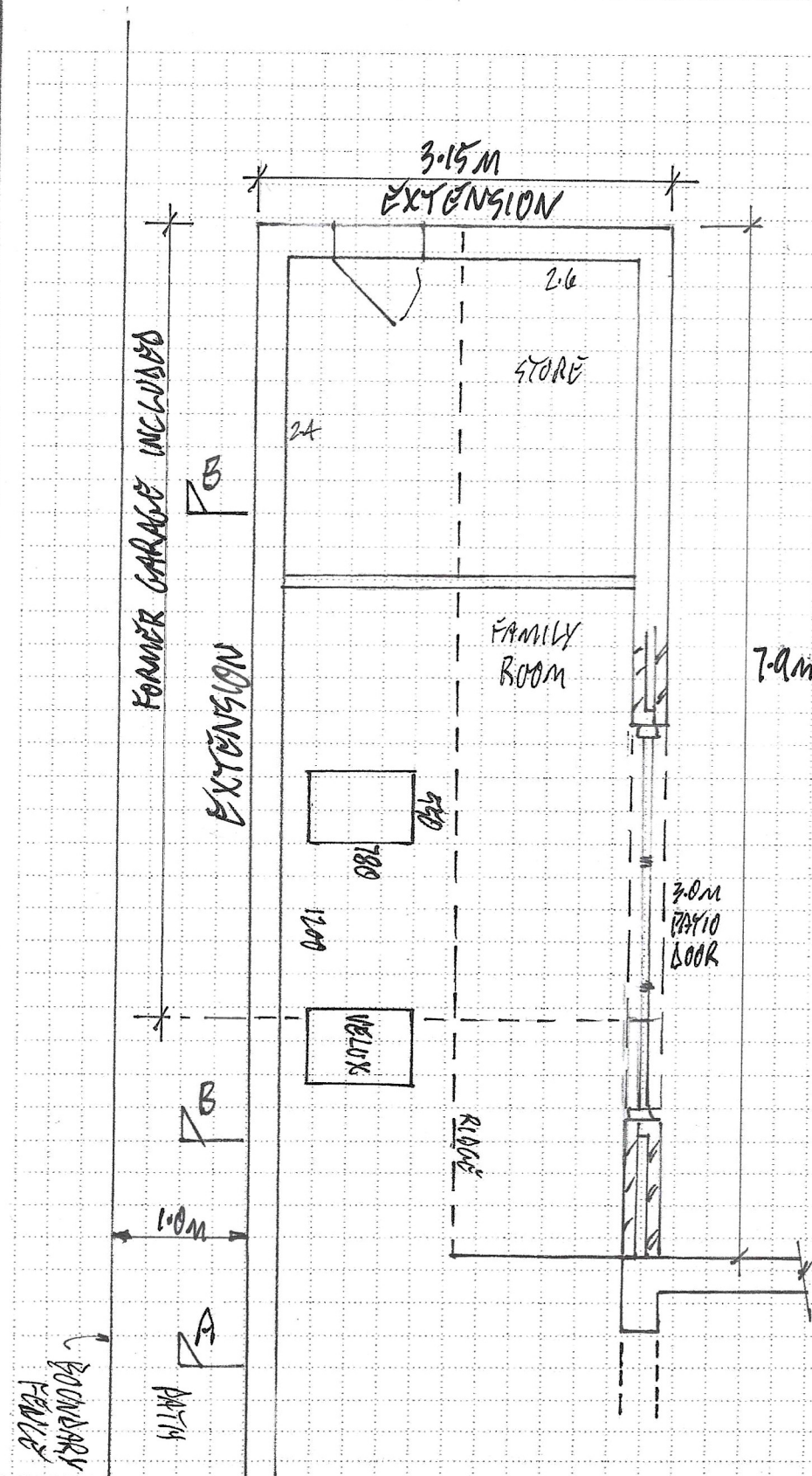
Location: EXTENSION PLAN - REAR

By: WCB

Date: FEB 26

Checked:

Approved:



A4  
1:50