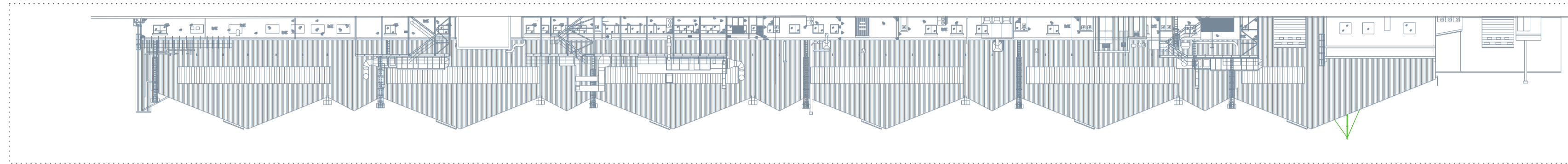
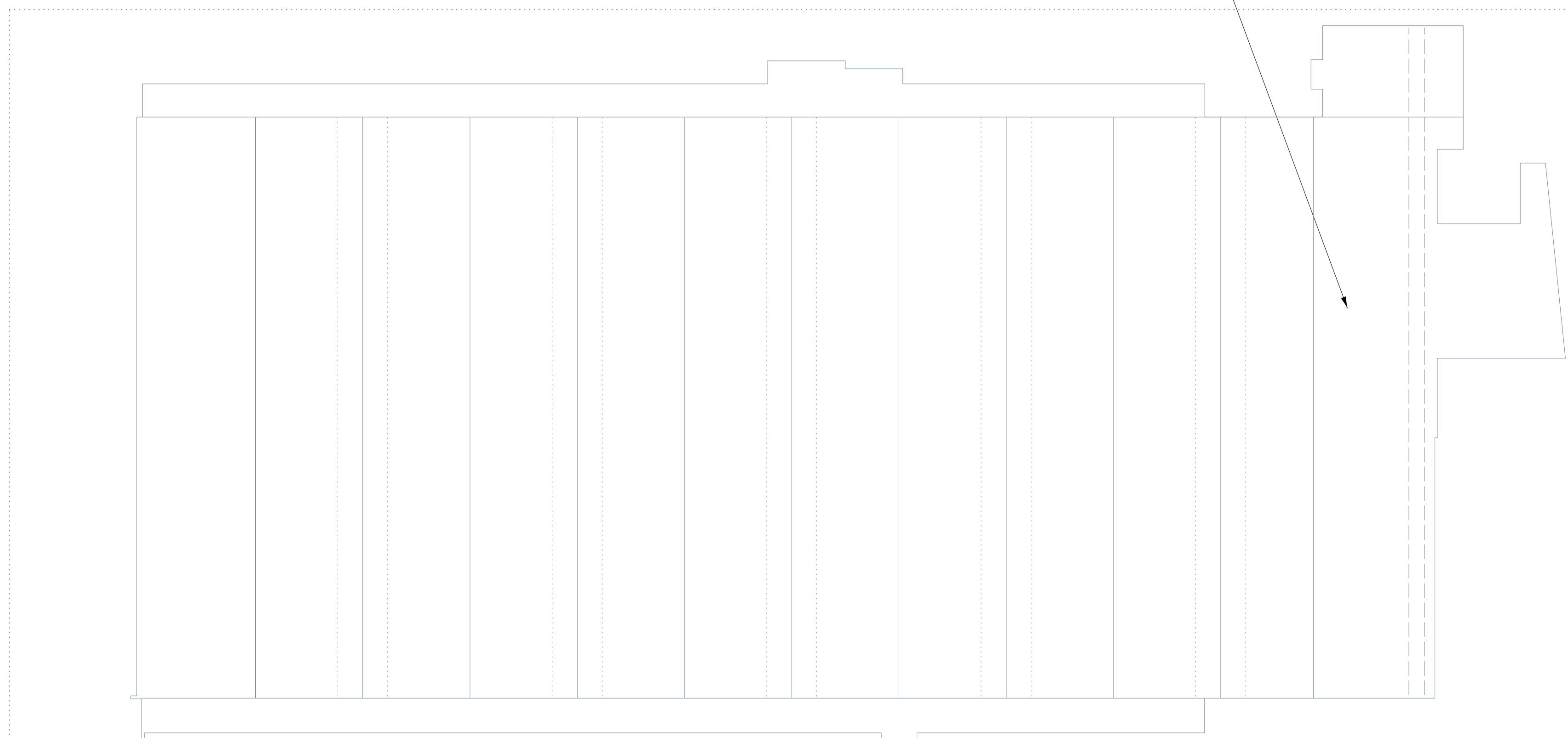


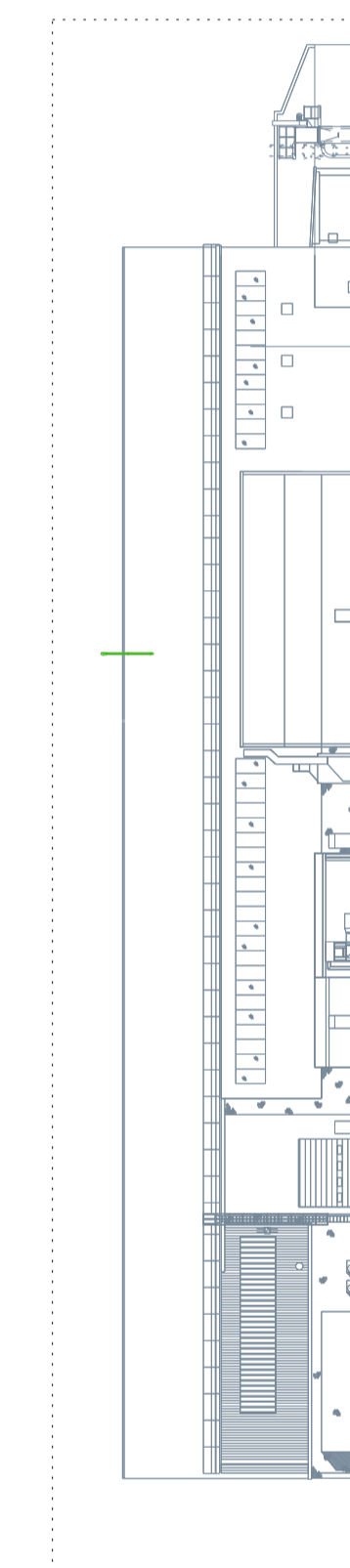
2 SHED SOUTH ELEVATION



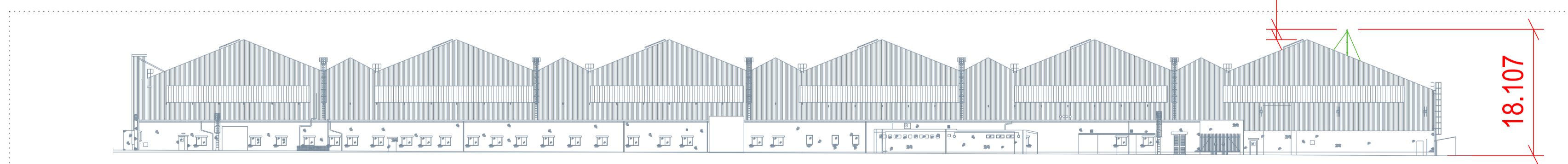
FLUE STACK PENETRATES HERE



2 SHED WEST ELEVATION



2 SHED PLAN



2 SHED NORTH ELEVATION

Rev.	Description	Date
B	DRAWING TITLE AMENDED TO PROPOSED	14-04-26
A	PLANNING DRAWING ISSUE	20-03-26

No part of this drawing may be copied or reproduced or any information contained on this drawing given to a third party without the prior written permission of:  
**Infrastructure and Facilities Services - Air BAE Systems (Operations) Ltd.**  
 This drawing contains information, as held on the I&FS FM CAD System at the date of printing only... 14/04/2026

Project  
24S0072 - SECF RESIN OVEN

Title  
PLANNING APPLICATION PROPOSED PLAN AND ELEVATIONS

Status  
S2

Suitable For Information

Designer A CULLEN	Engineer M FORBES	Date Created 09/12/2025
----------------------	----------------------	----------------------------

Scale 1:500 @ A1 <small>Printed at 1:1 N.T.S.</small>	Project/Sheet Number 24S0072 / 003
---	---------------------------------------

Drawing Reference 24S0072-BAES-002-2-DR-F-003	Rev. B
--	-----------

**Infrastructure and Facilities Services - Air**  
 BAE SYSTEMS  
 SAMLESBURY AERODROME  
 BALDERSTONE  
 BLACKBURN  
 LANCASHIRE  
 BB2 7LF  
 Tel: 03300 476166



Samlesbury Site © BAE Systems (Operations) Ltd. All rights reserved

Company Marking  
**BAE SYSTEMS PROPRIETARY**

Government Marking  
**NOT APPLICABLE**

