

EXISTING FLOW CONTROL MH

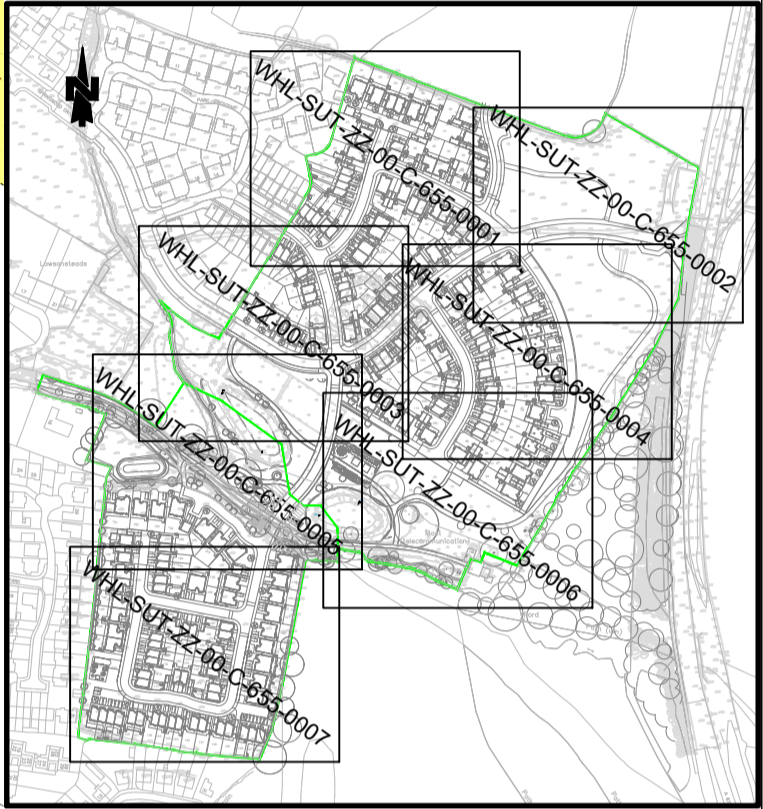
HYDROBRAKE DETAILS	
MANHOLE REFERENCE	EXG. MH
MANHOLE SIZE	2700mm DIA.
HYDROBRAKE TYPE	OPTIMUM
HYDROBRAKE REFERENCE	SHE-0281-4800-1700-4800
DISCHARGE RATE	48 l/sec
DESIGN HEAD	1.70 m
ORIFICE SIZE (mm)	281
WEIR DETAILS	
INVERT LEVEL (m)	56.600m
WEIR LEVEL (m)	N/A

HYDROBRAKE DETAILS	
MANHOLE REFERENCE	N4 S7
MANHOLE SIZE	2700mm DIA.
HYDROBRAKE TYPE	OPTIMUM
HYDROBRAKE REFERENCE	SHE-0175-1600-1323-1600
DISCHARGE RATE	16 l/sec
DESIGN HEAD	1.323m
ORIFICE SIZE (mm)	175
WEIR DETAILS	N/A
INVERT LEVEL (m)	53.984m
WEIR LEVEL (m)	N/A

HYDROBRAKE DETAILS	
MANHOLE REFERENCE	EXG MH
MANHOLE SIZE	2700mm DIA.
HYDROBRAKE TYPE	OPTIMUM
HYDROBRAKE REFERENCE	SHE-0141-1000-1300-1000
DISCHARGE RATE	10 l/sec
DESIGN HEAD	1.30 m
ORIFICE SIZE (mm)	141
WEIR DETAILS	
INVERT LEVEL (m)	58.144m
WEIR LEVEL (m)	N/A

- DO NOT SCALE THIS DRAWING
- GENERAL NOTES
- THIS DRAWING TO READ IN CONJUNCTION WITH ALL RELEVANT STRUCTURAL AND ARCHITECTURAL DRAWINGS AND SPECIFICATIONS.
 - ALL DIMENSIONS TO BE CHECKED ON SITE BY THE CONTRACTOR/FABRICATOR PRIOR TO COMMENCEMENT OF WORKS.
 - ALL DIMENSIONS ARE IN MILLIMETRES UNLESS STATED OTHERWISE.
 - ALL WORKS TO BE CARRIED OUT IN STRICT ACCORDANCE WITH THE ENGINEER'S SPECIFICATIONS, RELEVANT BRITISH STANDARDS AND WHERE APPLICABLE LOCAL AUTHORITIES REQUIREMENTS.

- KEY
- PROPOSED FOUL SEWER
 - PROPOSED SW SEWER
 - PROPOSED FOUL RISING MAIN
 - PROPOSED SW RISING MAIN
 - EXG. FOUL SEWER
 - EXG. SW SEWER
 - PRIVATE SW SEWER
 - PRIVATE FOUL SEWER
 - SEWER EASEMENTS



LOCATION PLAN
1:5000

W15	AMENDED TO LATEST LAYOUT	28.07.25	MG	SB
W14	AMENDED TO LATEST LEVELS	12.11.24	MG	SB
W13	AMENDED TO LATEST LEVELS	12.11.24	MG	SB
W12	N2 S23-S26 AMENDED TO SUIT SITE CONDITIONS	17.03.23	CR	SB
W11	N2 S24, S25 & S26 ADDED, N4 S6 AMENDED	10.03.23	MG	SB
W10	NETWORK 4 S2, S3 & S4 CL'S AMENDED	23.02.23	MG	SB
W9	NETWORK 2 S20 TO S21 AMENDED	06.11.22	MG	SB
W8	NETWORK 2 S20 TO S23 AMENDED	29.11.22	MG	SB
W7	S19 TO S20 PIPE MATERIAL AMENDED	26.09.22	MG	SB
W6	FOUL RISING MAIN AMENDED	05.09.22	MG	SB
W5	ADJUCUT CROSSING LOCATION AMENDED	07.09.21	MG	SB
W4	S13 NETWORK 1, S17 NETWORK 2 AMENDED	07.07.21	MG	SB
W3	DRAINAGE AMENDED DOWNSTREAM OF S13, F17	27.04.21	MG	SB
W2	F21 & F22 INVERT LEVELS AMENDED	27.04.21	MG	SB
W1	CONSTRUCTION ISSUE	21.04.21	MG	SB
P6	AMENDED TO IJG COMMENTS	15.01.21	MG	SB
P5	UPDATED TO LATEST DESIGN	26.11.20	MG	SB
P4	SW NETWORK 4 AMENDED	31.07.20	MG	SB
P3	SW NETWORK 2 AND 4 AMENDED	31.07.20	MG	SB
P2	COVER LEVELS AMENDED	26.02.20	MG	SB
P1	PRELIMINARY DRAWING	28.01.20	MG	SB

Drawing Status: **WORKING DRAWING**



Client: **LOVELL**

Project: **WHALLEY ROAD LANCASHIRE**

Drawing Title: **PROPOSED DRAINAGE LAYOUT SHEET 5 OF 7**

Date	Drawn By	Checked By
JAN 2020	MG	SB
Scale at A1	Project Number	Revision
1:250	30626	W15
Sheet Number	WHL-SUT-ZZ-00-C-655-0005	