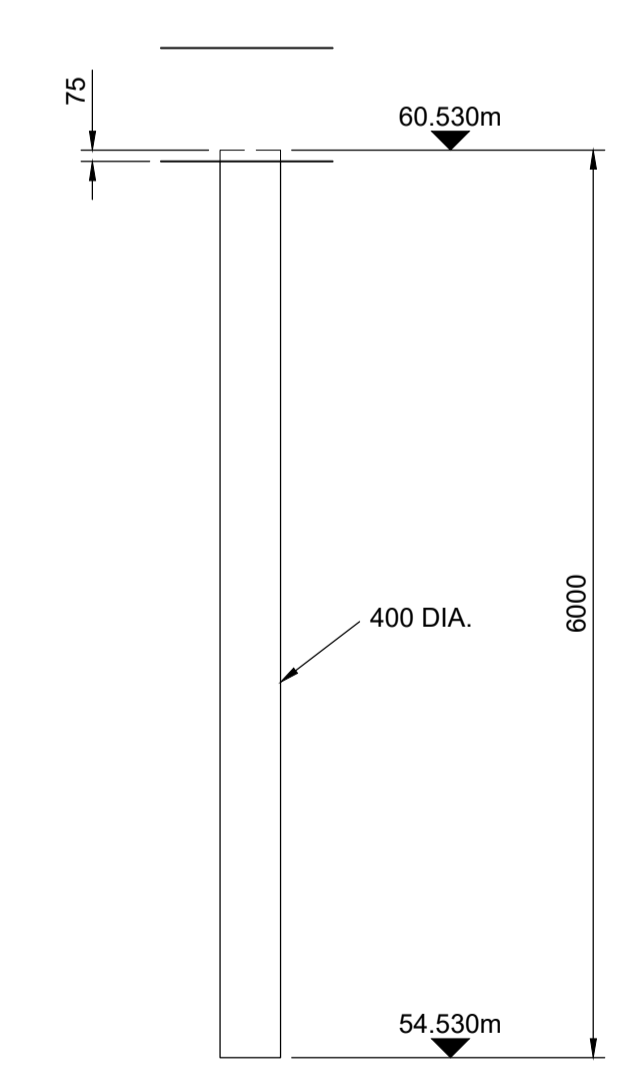


Plan On Piles  
Scale 1:100

PILE SETTING OUT CO-ORDINATES				
Pile Ref	EASTING	NORTHING	TOE LVL.	CUT OFF LVL.
P.01	2381722.22	1052636.14	54.530	60.530
P.02	2382637.30	1052038.41	54.530	60.530
P.03	2383466.14	1051497.00	54.530	60.530
P.04	2384294.98	1050955.59	54.530	60.530
P.05	2385123.82	1050414.19	54.530	60.530
P.06	2385952.66	1049872.78	54.530	60.530
P.07	2386781.50	1049331.37	54.530	60.530
P.08	2387610.35	1048789.97	54.530	60.530
P.09	2388439.19	1048248.56	54.530	60.530
P.10	2389268.03	1047707.15	54.530	60.530
P.11	2390096.87	1047165.75	54.530	60.530
P.12	2390925.71	1046624.34	54.530	60.530
P.13	2391754.56	1046082.93	54.530	60.530
P.14	2392583.40	1045541.53	54.530	60.530
P.15	2393412.24	1045000.12	54.530	60.530
P.16	2394241.08	1044458.71	54.530	60.530
P.17	2395069.92	1043917.31	54.530	60.530
P.18	2395898.76	1043375.90	54.530	60.530
P.19	2396727.61	1042834.49	54.530	60.530
P.20	2397556.45	1042293.09	54.530	60.530
P.21	2398472.36	1041694.80	54.530	60.530
P.22	2372712.45	1038843.04	54.530	60.530
P.23	2373627.52	1038245.31	54.530	60.530
P.24	2374456.36	1037703.90	54.530	60.530
P.25	2375285.21	1037162.49	54.530	60.530
P.26	2376114.05	1036621.09	54.530	60.530
P.27	2376942.89	1036079.68	54.530	60.530
P.28	2377771.73	1035538.27	54.530	60.530
P.29	2378600.57	1034996.87	54.530	60.530
P.30	2379429.42	1034455.46	54.530	60.530
P.31	2380258.26	1033914.05	54.530	60.530
P.32	2381087.10	1033372.65	54.530	60.530
P.33	2381915.94	1032831.24	54.530	60.530
P.34	2382744.78	1032289.83	54.530	60.530
P.35	2383573.62	1031748.43	54.530	60.530
P.36	2384402.47	1031207.02	54.530	60.530
P.37	2385231.31	1030665.61	54.530	60.530
P.38	2386060.15	1030124.21	54.530	60.530
P.39	2386888.99	1029582.80	54.530	60.530
P.40	2387717.83	1029041.39	54.530	60.530
P.41	2388546.68	1028499.99	54.530	60.530
P.42	2389462.59	1027901.70	54.530	60.530



Elevation On Pile - 42No. Thus  
Scale 1:50

**NOTES**

- See drawing 001 for all general notes.
- To be read in conjunction with all drawings listed on drawing 001.

**CONCRETE SPECIFICATION - PILES:**

STRUCTURAL CONCRETE SPECIFICATION FOR DESIGNED CONCRETE:

- A. TO CONFORM WITH BS EN 206-1 AND BS 8500-2
- B. COMPRESSIVE STRENGTH: C40/50
- C. MAXIMUM W/C RATIO: 0.45
- D. MINIMUM CEMENT CONTENT: 340kg/m<sup>3</sup>
- E. DC-CLASS: N/A
- F. CEMENT OR COMBINATION: IIB-V
- G. TARGET DENSITY CLASS: N/A
- H. MAXIMUM AGGREGATE SIZE: 20mm
- I. CHLORIDE CLASS: CL 0.40
- J. CONSISTENCE CLASS: TO BE SPECIFIED BY THE FABRICATOR
- K. NOMINAL COVER TO BE 45mm
- L. EXPOSURE CLASS: XC3/4 TO TOP FACE OF CONCRETE DECK

**APPROVAL**

REV	DESCRIPTION	BY	CHK	APP	DATE
B01	DETAILED DESIGN	KB	NC	JL	25.06.21

REVISION TABLE

**HBPW**  
CONSULTING ENGINEERS

43 BRIDGEGATE  
RETFORD  
NOTTINGHAMSHIRE  
DN22 7UX  
TEL. (01777) 869896  
www.hbpw.co.uk

CLIENT:  
**LOVELLS**

CONTRACTOR:  
**LOVELLS**

HBPW PROJECT NUMBER:  
**SL07119**

PROJECT:  
**Whalley Aqueduct Crossing**

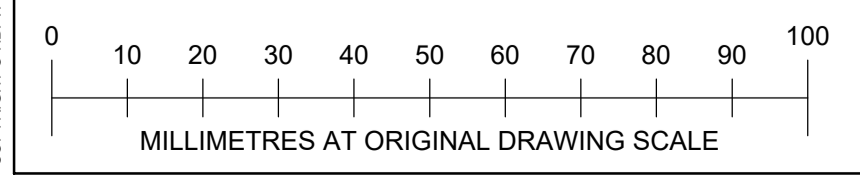
DRAWING:  
**Pile Layout**

PROJECT ENGINEER: J.Livesey	DRAWN: W.Withers
CHECKED: N.Chia	APPROVED: J.Livesey

DATE: 25.06.2021	SCALE: As Shown	SIZE: A1	SUITABILITY: -	REVISION: B01
---------------------	--------------------	-------------	-------------------	------------------

DOCUMENT REFERENCE NUMBER:  
**7119-HBPW-DRG-ECV-0102**

COPYRIGHT © HBPW LLP (2019)



Elevation A On Whalley Aqueduct Crossing  
Scale 1:50