



**Landscape Plan Key**

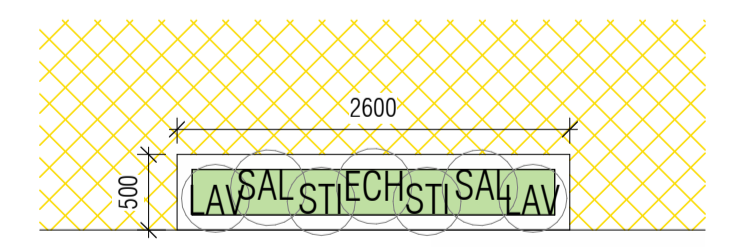
	Low level planters (species such as Lavandula angustifolia 'Hidcote', Salvia sylvestris, Agapanthus spp, Echinacea purpurea, Persicaria amplexicaulis 'Firetail') refer to planting schedule below.
	Proposed swale/rain garden. Grass in bottom of swale. Grass seed mix. Sow topsoil within the growing season, typically April to October. Maintain to a height of 75 to 150mm. For specific swale details refer to S&W swale drawing (CEB-SAW-XX-00-52-DR-C-1606-SO-C1-SUDS DETAILS)

**Plant Schedule (Overall Site)**

Ornamental Shrubs				
Quantity	Species	Code	Size of container	Height
67	Lavandula angustifolia 'Hidcote'	LAV	2L	20-30cm
Herbaceous Plants				
Quantity	Species	Code	Size of container	Height
45	Salvia sylvestris	SAL	1L	30-60cm
32	Agapanthus SSP	AGA	3L	60-120cm
37	Echinacea purpurea	ECH	2-3L	90-100cm
31	Persicaria amplexicaulis 'Firetail'	PER	2-3L	120cm
Grasses				
Quantity	Species	Code	Size of container	Height
47	Stipa tenuissima	STI	2L	30-60cm

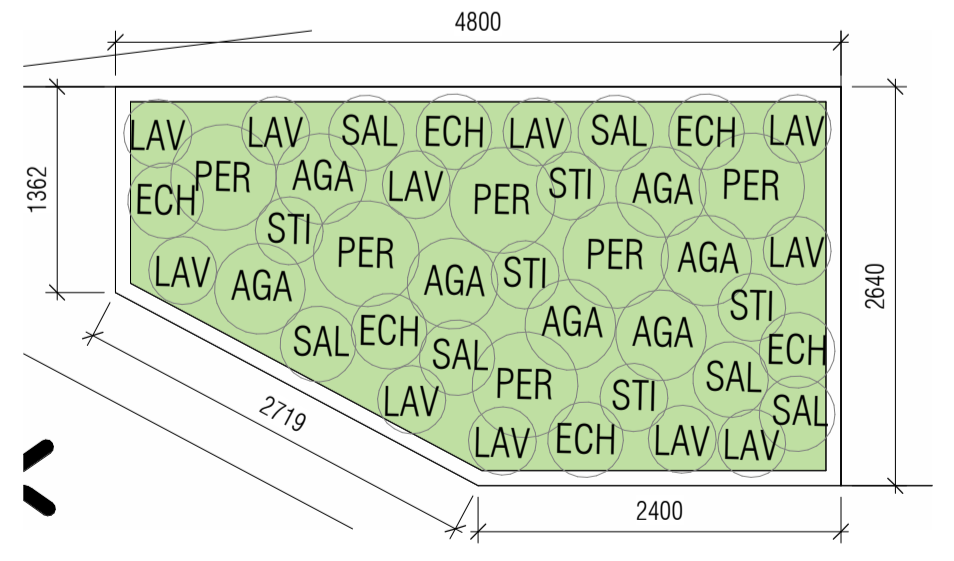
- Notes**
- General**
    - All planting to comply with BS 8545 / BS 4428.
    - All plants to be nursery-grown and pest/disease free
  - Planting**
    - Plant during first appropriate season following occupation or use of the development
    - Water thoroughly after planting and during establishment (first year)
    - All plants to be placed at 300mm centres
  - Maintenance**
    - All plants are to be maintained thereafter for a period of not less than 5 years to the satisfaction of the Local Planning Authority.
    - Replace any plants which are removed, dead or are seriously damaged, or become seriously diseased, by a species of similar size to those originally planted.
    - Control weeds regularly
    - Prune and maintain to prevent overgrowth

**01 Proposed Landscape - Detail 01**  
1 : 50

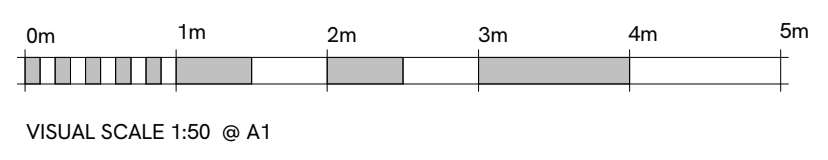


Total number:  
10 Planters

**02 Proposed Landscape - Detail 02**  
1 : 50



**03 Proposed Landscape - Detail 03**  
1 : 50



P01	Issued in Relation to Planning Condition 11	19/05/2025	TP	LP
Rev	Description	Date	Drawn	Checked

Revision Schedule

Client:	<b>BAE SYSTEMS</b>								
Project:	Samesbury Modular Office								
Title:	Proposed Landscape Plan - Sheet 02								
Project no:	7348	Scale:	As indicated@A1	Drawn by:	ES	Checked by:	TP	Date:	19/05/2025
Drawing no:	CEB-WMA-XX-ST-DR-A-00-011	Status:	S0	Rev:	P01				

**WM Wilson Mason Architects**

North: Spring Lane, Upland House, Samesbury, Lancashire, PR5 0UX  
T: 01772 877455  
E: north@wilsonmason.co.uk

London: 12 Albemarle Way, London, EC1V 43B  
T: 020 7637 1501  
E: london@wilsonmason.co.uk

[www.wilsonmason.co.uk](http://www.wilsonmason.co.uk)