

SURFACE WATER MANHOLE SCHEDULE							
MANHOLE REFERENCE	CONSTRUCTION	SIZE	COVER LEVEL	PIPE INVERT LEVEL	DEPTH TO PIPE INVERT (m)	OVERALL DEPTH	COVER CLASS
SWMH 0	CONCRETE	1500	73.20	71.60	1.60	1.90	D40
SWMH 1	CONCRETE	1500	73.20	72.40	0.80	1.20	D40
SWMH 2	CONCRETE	1800	73.40	72.30	1.10	1.40	D40
SWMH 3	CONCRETE	1500	73.50	72.40	0.90	1.20	D40
SWMH 4	CONCRETE	1500	73.70	72.70	0.90	1.20	D40
SWMH 5	CONCRETE	1500	73.60	72.90	0.70	1.00	D40
SWMH 6	CONCRETE	1500	73.50	73.00	0.50	0.80	D40
SWMH 0	CONCRETE	1500	73.00	72.50	0.50	0.80	E60
SWMH 1	CONCRETE	1500	73.00	71.50	1.50	1.80	E60

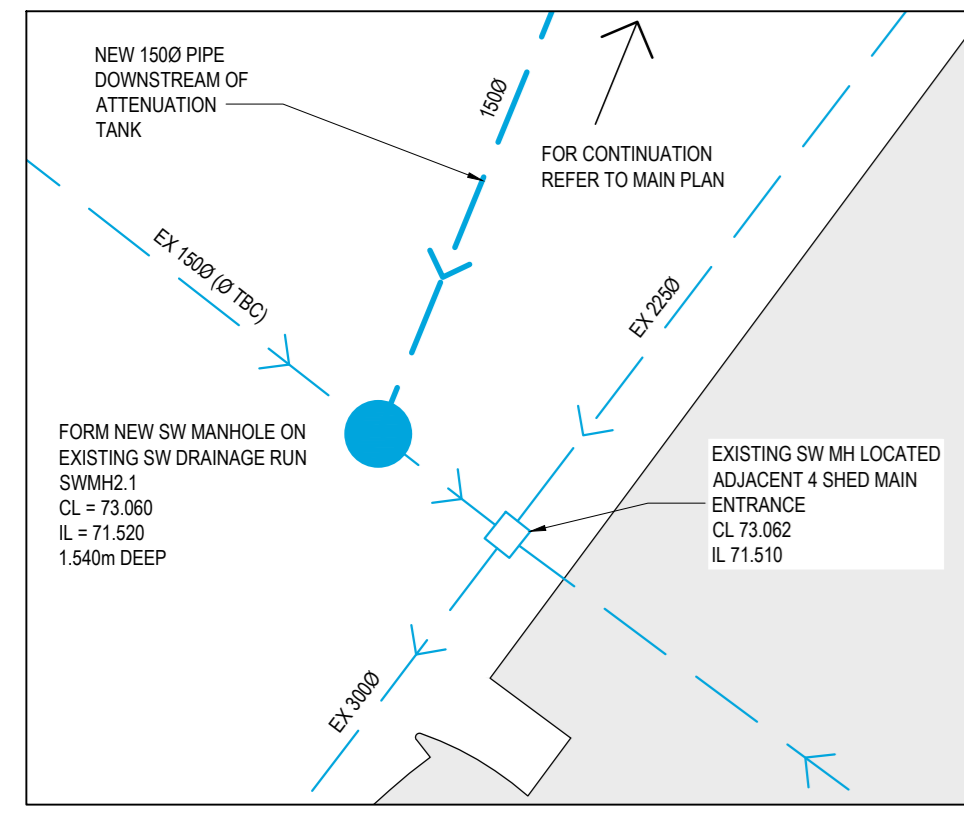
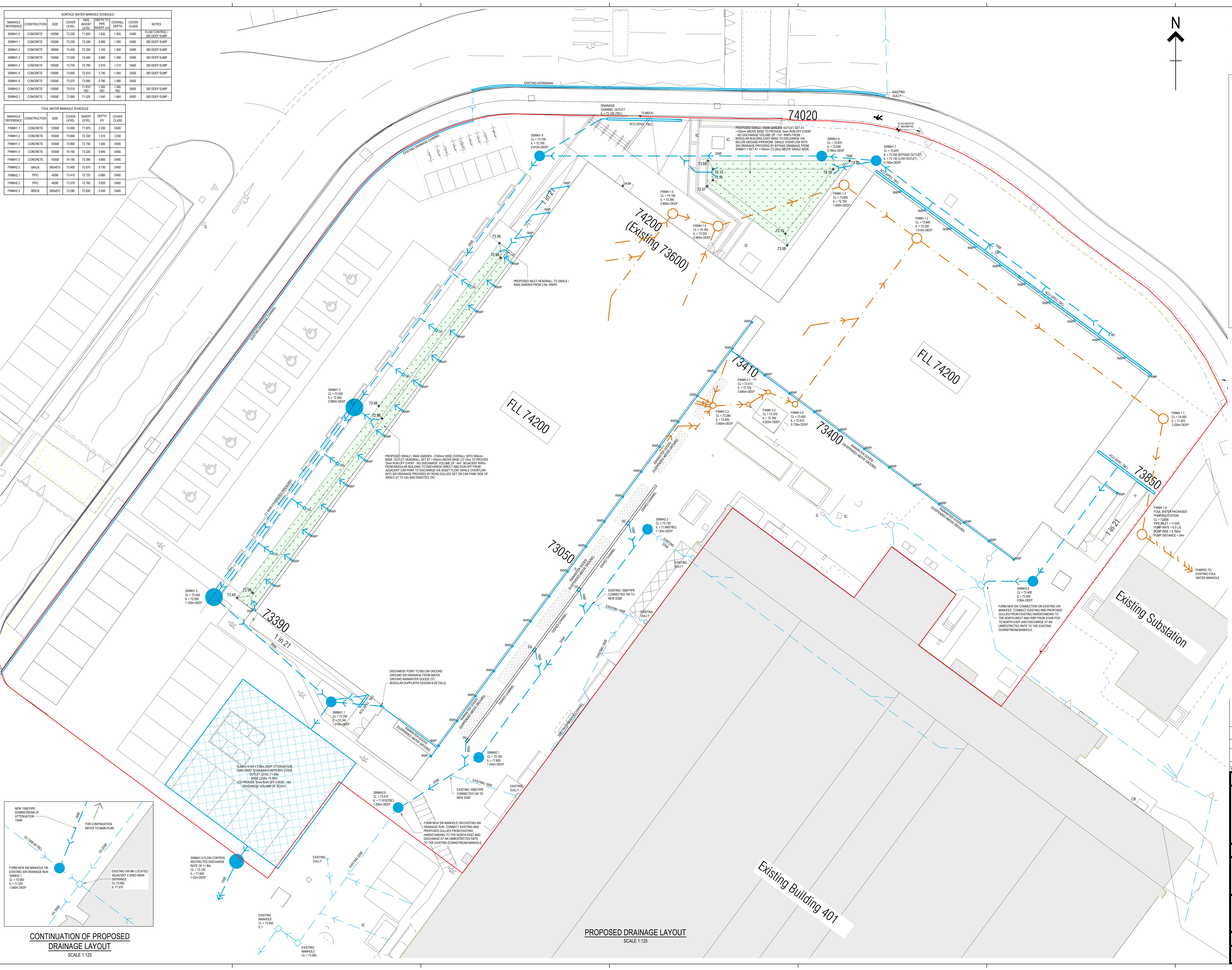
FOUL WATER MANHOLE SCHEDULE							
MANHOLE REFERENCE	CONSTRUCTION	SIZE	COVER LEVEL	PIPE INVERT LEVEL	DEPTH	COVER CLASS	
FWMH 1	CONCRETE	1200	74.00	71.80	2.20	D40	
FWMH 2	CONCRETE	1500	73.40	72.30	1.10	C50	
FWMH 3	CONCRETE	1500	73.80	72.70	1.10	D40	
FWMH 4	CONCRETE	1500	74.10	73.20	0.90	D40	
FWMH 5	CONCRETE	1500	74.10	73.30	0.80	D40	
FWMH 0	BRICK	900x75	73.40	72.80	0.60	D40	
FWMH 1	PPC	400	73.40	72.75	0.65	D40	
FWMH 2	PPC	400	73.70	72.95	0.75	D40	
FWMH 3	BRICK	900x75	73.20	72.80	0.40	D40	

GENERAL NOTES

- THIS DRAWING IS TO BE READ IN CONJUNCTION WITH ALL RELEVANT GEOTECHNICAL, MECHANICAL, ELECTRICAL, ENGINEERING CONTRACT DOCUMENTS, WHERE DWG, REVISION AND 'E' FILES ARE SUPPLIED. THESE ARE FOR COLLABORATION WITH OTHER CONSULTANTS INFORMATION AND SHOULD NOT BE USED FOR CONSTRUCTION PURPOSES BY THE CONTRACTOR, SUB CONTRACTORS OR CLIENT. ONLY THE INFORMATION PROVIDED IN THIS COPY OF THE DRAWING IS TO BE REPLIED UPON FOR ACCURACY.
- ALL LEVELS ARE SHOWN IN METRES AND RELATE TO ORDNANCE DATUM.

DRAINAGE KEY

- EXISTING FOUL WATER DRAIN (PIPE DIAMETER & GRADIENT)
- PROPOSED FOUL WATER DRAIN (PIPE DIAMETER & GRADIENT)
- EXISTING SURFACE WATER DRAIN (PIPE DIAMETER & GRADIENT)
- PROPOSED SURFACE WATER DRAIN (PIPE DIAMETER & GRADIENT)
- EXISTING COMBINED WATER DRAIN (PIPE DIAMETER & GRADIENT)
- PROPOSED COMBINED WATER DRAIN (PIPE DIAMETER & GRADIENT)
- FOUL WATER MANHOLE
- SURFACE WATER MANHOLE
- COMBINED WATER MANHOLE
- BACKDROP MANHOLE
- RODDING EYE
- REST BEND
- REST BEND
- STUB STACK TO REST BEND FOR SOIL OR SOIL & VENT PIPE (ARCHITECT TAKE ENGINEER TO COVER)
- INTERNAL FLOOR GULLY
- EXTERNAL YARD GULLY
- ROAD GULLY
- GULLY WITH DISHED CHANNEL GRATING
- PAVED AREA GULLY - HEPWORTH CLAY SODDIT
- ACCUMULATION
- ATTENUATION TANK / SOAKAWAY - REFER TO DETAILS
- TANK VENT OUTLET
- VENT OUTLET TO ATMOSPHERE
- RISING MAIN
- HEADWALL (INLET / OUTLET TO SWALE)



CONTINUATION OF PROPOSED DRAINAGE LAYOUT SCALE 1:125

PROPOSED DRAINAGE LAYOUT SCALE 1:125

DRAWING ISSUED FOR DISCHARGE OF PLANNING CONDITIONS

NO.	REVISION	DATE	BY
P5	DISHED CHANNEL GULLIES ADDED OUTSIDE MODULAR BUILDING. FOUL DRAINAGE LAYOUT UPDATED AND MANHOLE REFERENCES ADDED. ACCUMULATION CHANNELED ADDED TO EASTERN RAMP & EXISTING HANDSTANDS AREA. DETAILED LAYOUT OF PROPOSED DRAINAGE LAYOUT TO FINAL CONNECTION ADDED. MANHOLE SCHEDULES ADDED. DRAINAGE CHANNEL ACCESS TO SOUTHERN RAMP. VOLUME OF ATTENUATION TANK INCREASED TO 20m ³ .	14.05.24	MB
P4	SW DRAINAGE LAYOUT UPDATED WITH LATEST COMMENTS. SWALES RAIN GARDENS ADDED AND ATTENUATION TANK (PART SOAKAWAY) UPDATED FOR 5m ³ RUN-OFF EVENT - ZERO DISCHARGE.	11.02.24	CLW
P3	ATTENUATION TANK SIZE UPDATED AND RESTRICTED DISCHARGE RATE ADDED TO SWMH 0 FLOW CONTROL MANHOLE.	17.11.23	CLW
P2	SW DRAINAGE REVISED TO PROVIDE SUPPLEMENTARY ABOVE GROUND RAINWATER GOODS TO SOUTH FACING ELEVATIONS AND CONNECTION INTO COMMON ATTENUATION TANK. MINOR UPDATES TO FW DRAINAGE.	17.10.23	CLW
P1	PRELIMINARY ISSUE	03.10.23	CLW
REV	AMENDMENTS	DATE	BY

PRELIMINARY

Sleater & Watson
 Consulting Civil & Structural Engineers.
 Ribbles House, Meaygate,
 Bamford Bridge, Preston, PR5 6UP
 Telephone: 01772 821044
 E-mail: admin@sleaterwatson.co.uk
 Website: www.sleaterwatson.co.uk

CLIENT: **BAE SYSTEMS**

PROJECT: **MODULAR BUILDING, (CEB REPLACEMENT), BAE SYSTEMS, SAMLESBURY.**

TITLE: **PROPOSED DRAINAGE LAYOUT**

DRAWN: SAW	CHECKED: CLW	DATE: OCT. 2023	PROJECT NO: 225011	SCALE: B40
PRG NO: CEB-SAW-XX-00-52-DR-C-5201-S0-P5				