

Sustainable Farming Incentive 2026 (SFI26) SFI Historic Environment Farm Environment Record (SFI HEFER)

Information about historic and archaeological features for SBI 106985108 generated on 17/06/2026

This SFI HEFER includes:

- a map of the land parcels currently linked to your Single Business Identifier(SBI) which contain historic and archaeological features
- a list of the historic and archaeological features in your land parcels – this includes any scheduled monuments, registered parks and gardens, registered battlefields and non-designated SHINE features
- the requirements you must follow when you complete your selected SFI actions on any area in a land parcel that contains historic or archaeological features

The land parcels shown in this SFI HEFER are those which were linked to your SBI at the time you requested it. If you've added new land parcels to your SBI since you requested this SFI HEFER, you must request another SFI HEFER.



Department
for Environment
Food & Rural Affairs

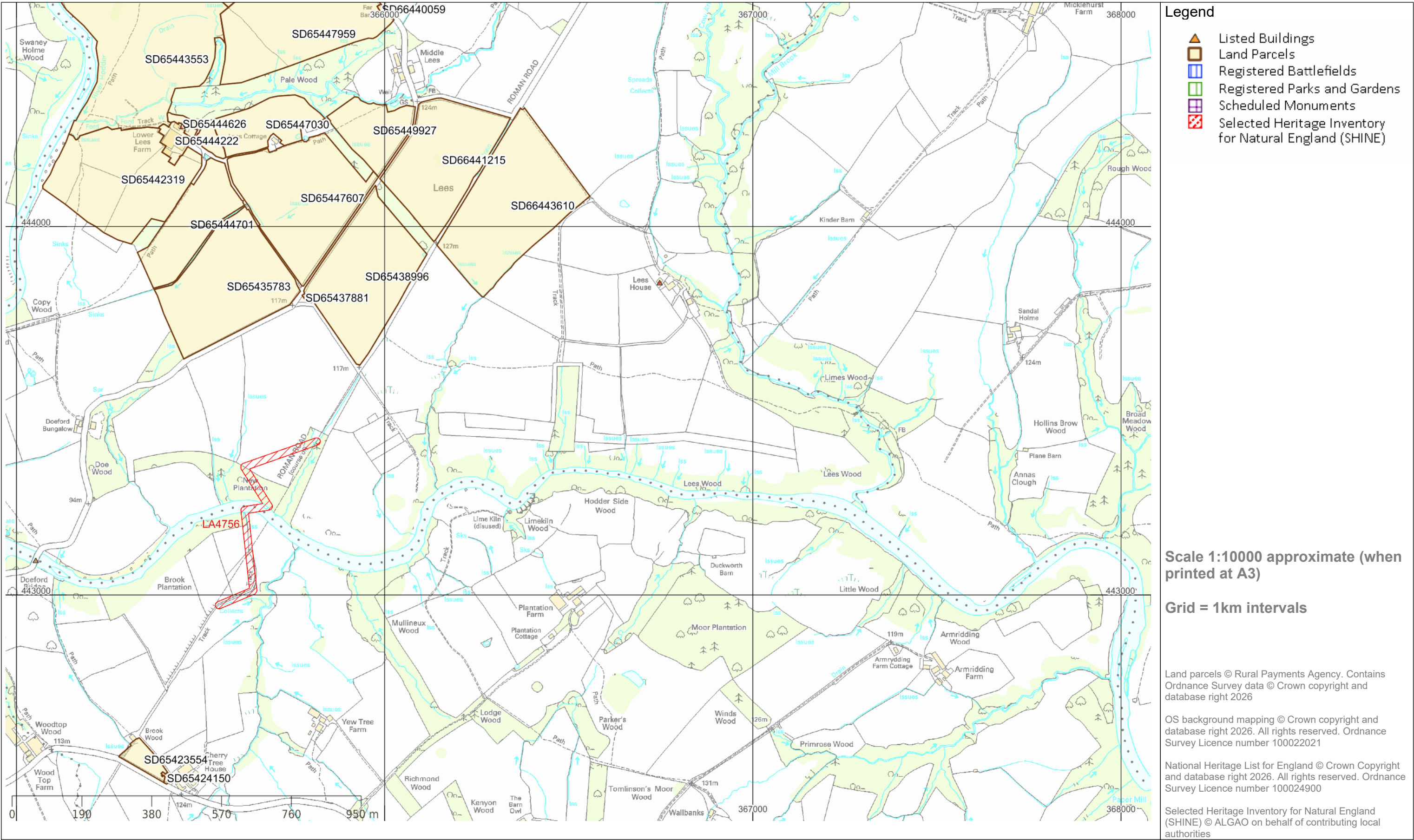


Historic
England

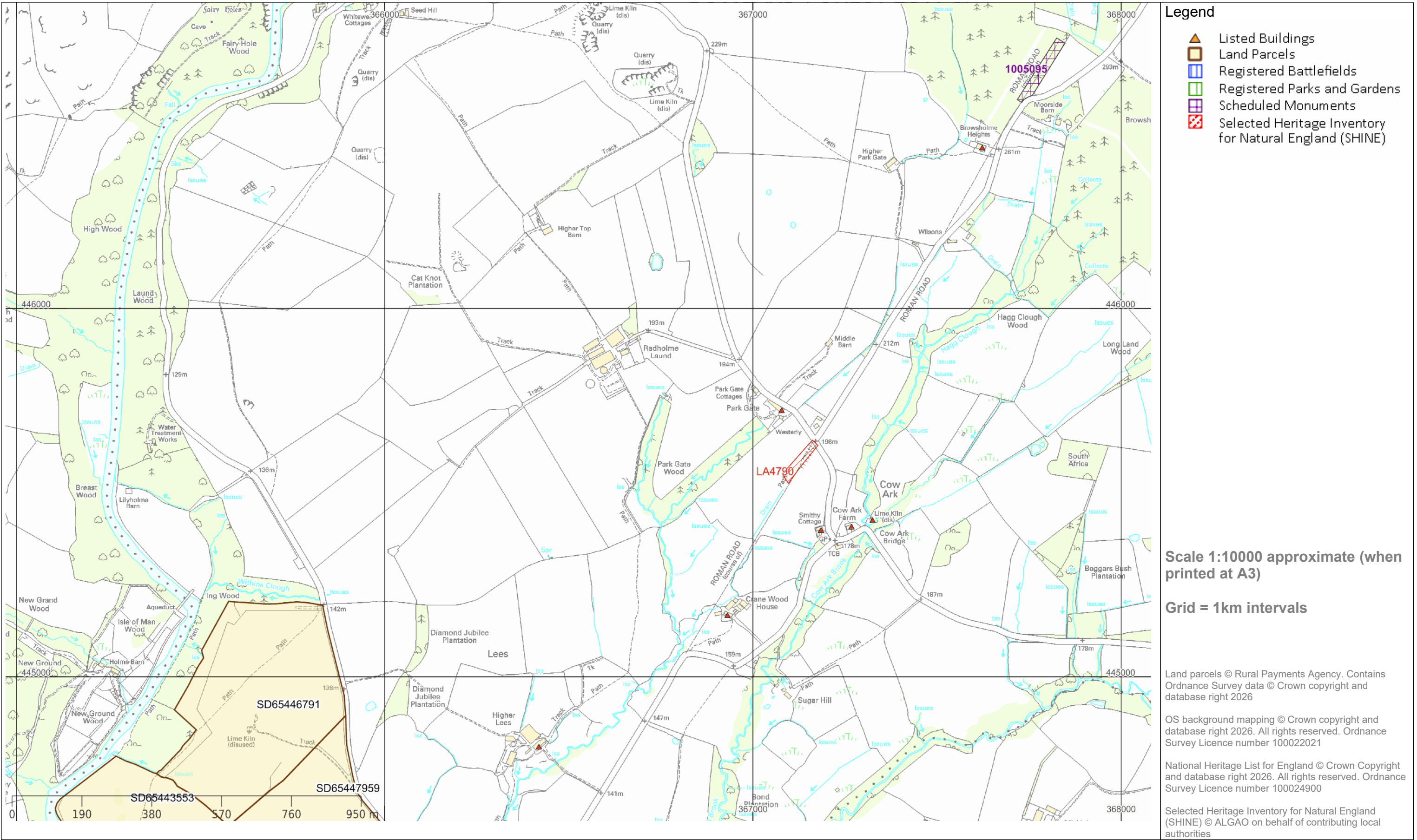


Forestry Commission

Map of Historic and Archaeological Features for SBI 106985108 generated on 17/06/2026



Map of Historic and Archaeological Features for SBI 106985108 generated on 17/06/2026



List of Historic and Archaeological Features for SBI 106985108 generated on 17/06/2026

This SFI HEFER identifies:

- land parcels linked to your SBI which contain historic and archaeological features - each SFI action identifies whether this land is eligible
- a list of historic and archaeological features on your holding (which may include scheduled monuments, registered parks and gardens, registered battlefields, and non-designated SHINE features)
- whether you must get Scheduled Monument consent before you do the SFI action
- the requirements you must follow for each SFI action on any area of land that contains historic and archaeological features

| Land parcels | Area (ha) | Status | Reference number | Site name | Type | Information provider | Significance (SHINE only) | Heritage at Risk assessment - designated assets only | Heritage at Risk principal vulnerability - designated assets only | Heritage at Risk condition - designated assets only | Heritage at Risk assessment - designated assets only | Link for further information |
|--------------|-----------|--------|------------------|-----------|------|----------------------|---------------------------|--|---|---|--|------------------------------|
|--------------|-----------|--------|------------------|-----------|------|----------------------|---------------------------|--|---|---|--|------------------------------|

* If you have any queries relating to the historic and archaeological features on your SFI HEFER please contact the relevant Information provider listed above, quoting the relevant reference number. Any queries or approval relating to capital items on SHINE features should be directed to the relevant Historic Environment Record (HER) where the feature is located, whose contact details are available on the [Heritage Gateway](#).

Requirements relating to SFI26 actions on land with historic and archaeological features

You must follow the requirements below when completing your selected SFI26 actions on any area within a land parcel that contains historic and archaeological features listed in this SFI HEFER.

If this SFI HEFER identifies a scheduled monument, you must get:

- [Scheduled Monument Consent](#) from Historic England if your SFI26 actions require activities which will disturb the ground on this land, unless the activities are covered by deemed consent under the terms of the Ancient Monuments (Class Consents) Order 1994 (a 'class consent')
- [Consent for soil sampling on scheduled monuments](#) from Historic England if you need to take soil samples on this land

| Theme | Action | Requirements |
|--|-----------|---|
| Agroforestry | AGF1 | Do not undertake this action on any area within a land parcel that contains historic and archaeological features as identified on your SFI HEFER. |
| | AGF2 | Do not undertake this action on any area within a land parcel that contains historic and archaeological features as identified on your SFI HEFER. |
| Buffer strips | CAHL4 | Use this action to protect upstanding historic and archaeological features, such as earthworks, in-field historic structures and buildings. |
| | CIGL3 | Use this action to protect upstanding historic and archaeological features, such as earthworks, in-field historic structures and buildings. |
| | BFS6 | Do not undertake this action on any area within a land parcel that contains historic and archaeological features as identified on your SFI HEFER. |
| Farmland wildlife on arable and horticultural land | AHW3 | Do not undertake this action on any area within a land parcel that contains historic and archaeological features as identified on your SFI HEFER. |
| | AHW5 | Do not undertake this action on any area within a land parcel that contains historic and archaeological features as identified on your SFI HEFER. |
| Farmland wildlife and habitats on grassland | CIGL1 | Do not undertake this action on any area within a land parcel that contains historic and archaeological features as identified on your SFI HEFER. |
| | SCR1 | Do not undertake this action on any area within a land parcel that contains historic and archaeological features as identified on your SFI HEFER. |
| | SCR2 | Do not undertake this action on any area within a land parcel that contains historic and archaeological features as identified on your SFI HEFER. |
| Heritage | HEF1 | Use this action to maintain traditional farm and forestry buildings on your holding. |
| | HEF6 | Use this action to manage historic and archaeological features under grassland. |
| Integrated pest management | CIPM3 | You must avoid growing deep rooted species on any area within a land parcel that contains historic or archaeological features identified in your SFI HEFER. |
| Moorland | UPL1-3 | Use the appropriate grazing level to ensure that historic or archaeological features are neither over or under grazed. |
| | UPL8 & 10 | Removal of stock over winter is recommended for land with historic or archaeological features. |

| Theme | Action | Requirements |
|---------------------|--------|--|
| Nutrient management | CNUM2 | Do not undertake this action on any area within a land parcel that contains historic and archaeological features as identified on your SFI HEFER. |
| | CNUM3 | You must avoid growing deep rooted species on any area within a land parcel that contains historic or archaeological features identified in your SFI HEFER. |
| | PRF1 | Where possible, avoid taking soil samples from historic or archaeological features identified on your HEFER. If you need to take soil samples on any area of land containing a scheduled monument get consent from Historic England before you take the soil samples. If you need to take soil samples on any area of land containing a non-designated historic or archaeological feature (a 'SHINE' feature), a registered park or garden, or a registered battlefield identified on your SFI HEFER you should <ul style="list-style-type: none"> • only take enough soil samples to meet the requirements of the relevant SFI action • carry out soil sampling to a depth of no more than 7.5cm on permanent grassland • carry out soil sampling to a depth of around 20cm (up to a maximum of 25cm) on arable land (including temporary grassland) |
| Soil health | CSAM2 | You must avoid growing deep rooted species on any area within a land parcel that contains historic or archaeological features identified in your SFI HEFER. |
| | CSAM3 | Do not undertake this action on any area within a land parcel that contains historic and archaeological features as identified on your SFI HEFER. |
| | SOH1 | This action is suitable for some historic and archaeological features, where these have been identified as below ground or buried remains on your SFI HEFER. You must not carry out subsoiling on land with historic or archaeological features, including scheduled monuments (which would require scheduled monument consent). |
| | SOH3 | You must avoid growing deep rooted species on any area within a land parcel that contains historic or archaeological features identified in your SFI HEFER. |

Capital items, such as fencing, planting new hedgerows and trees may damage historic and archaeological features. Ensure you follow appropriate guidance and seek relevant consents when applying for capital items to accompany your Sustainable Farming Incentive actions.