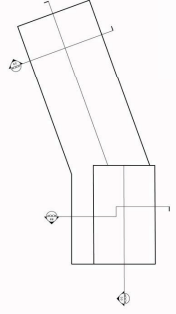


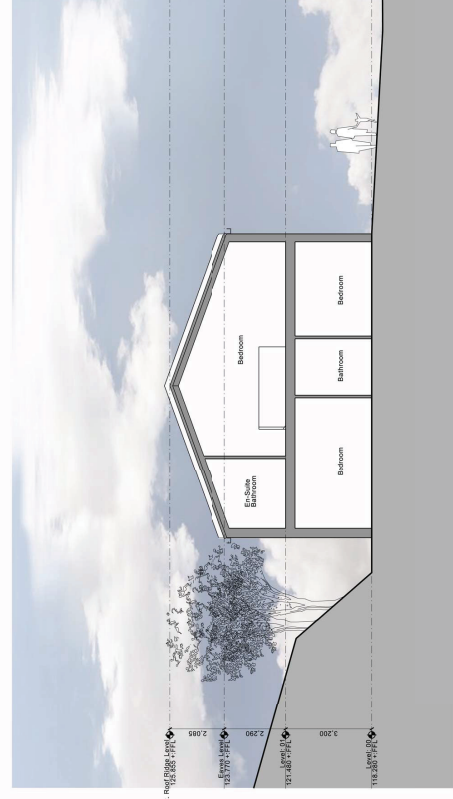
Copyright © 2013, 5plus architects. All rights reserved. This document is the property of 5plus architects and is not to be distributed, copied, or reproduced in any form without the written permission of 5plus architects. The information contained herein is confidential and intended solely for the use of the individual or entity to whom it is addressed. If you have received this document by mistake, please notify us immediately by email at info@5plusarchitects.com or by phone at +44 (0)191 232 0171. We accept no liability for any errors or omissions in this document. The information contained herein is for general information only and does not constitute an offer of any financial product or service. The information contained herein is not intended to be used as a substitute for professional advice. The information contained herein is not intended to be used as a substitute for professional advice. The information contained herein is not intended to be used as a substitute for professional advice.



Section AA



Section BB



Section CC

[REV] [DATE] [STATUS]

5plus architects
 PROJECT: **5plus Architects**
 47 Lonsdale Street, Manchester, M2 1JH
 +44 (0)191 232 0171
 www.5plusarchitects.com

TITLE: **5plus Architects**
 Proposed Sections AA, BB & CC
 SCALE: 1:100 DATE: 03.05.13
 DRAWN: JMI
 CHECKED: JMI
 PROJECT NO: 06024_B2_05_001
 REV: A
 ARCHITECT: J. Mansfield | DESIGNER: J. Mansfield | BUILDING: J. Mansfield