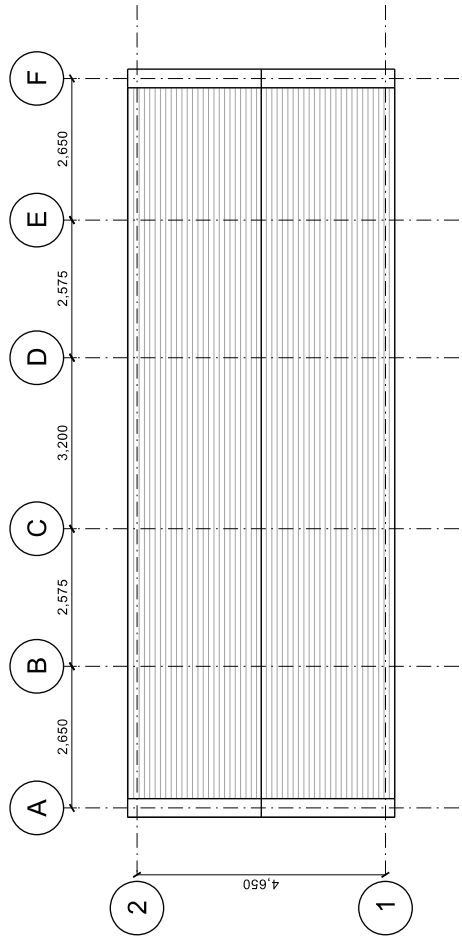


Copyright of this drawing is vested in 5plus Architect and it must not be copied or reproduced without written consent.
 Figured dimensions only are to be taken from this drawing. DO NOT SCALE OFF THIS DRAWING IF IN DOUBT
 ASK.
 Architects must take the utmost care to check the accuracy of all drawings and dimensions relative to their work.
 5plus architects are to be advised of any variation between drawings and site conditions.
 Electronic data generated based as 'read only' and should not be interpreted for measurement.
 All dimensions and levels should be 'read only' from those values stated in text on the drawings

KEY PLAN:



REV: | DATE: | DETAILS:

4th Floor
 The Hive
 47 Lever Street
 Manchester
 M1 1FN
 +44 (0)161 228 0211

5plusarchitects

PROJECT:
 Chipping
 Masterplan
 www.5plusarchitects.com

TITLE:
 Kid's Club
 Roof Plan

SCALE: 1:100 A3
 DATE: 22.07.13
 DRAWN: JDH
 CHECKED: JM

STATUS:
 Planning

DRAWING NO:
 05024_B7_02_001
 REV: -

Architecture | Masterplanning | Interiors | Graphics | Branding