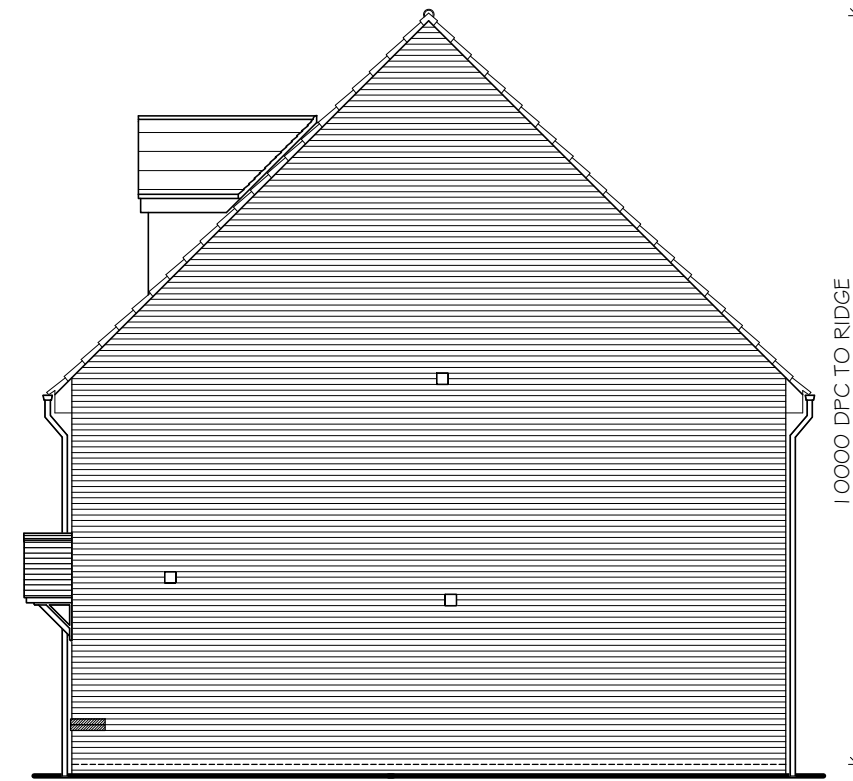


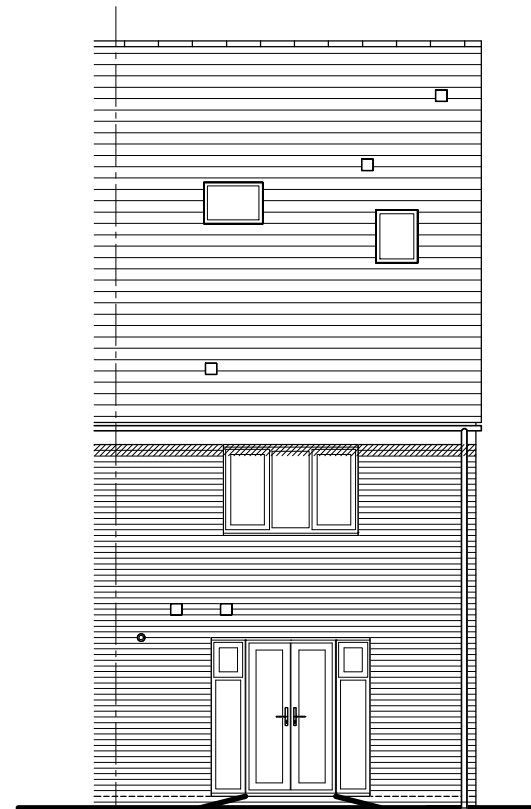
Rev A: Dormer detail revised to Apex; Unibox Gas meter & elec meter on front elevation removed; Ridge height dim added to side elevation.  
YC 08.03.19



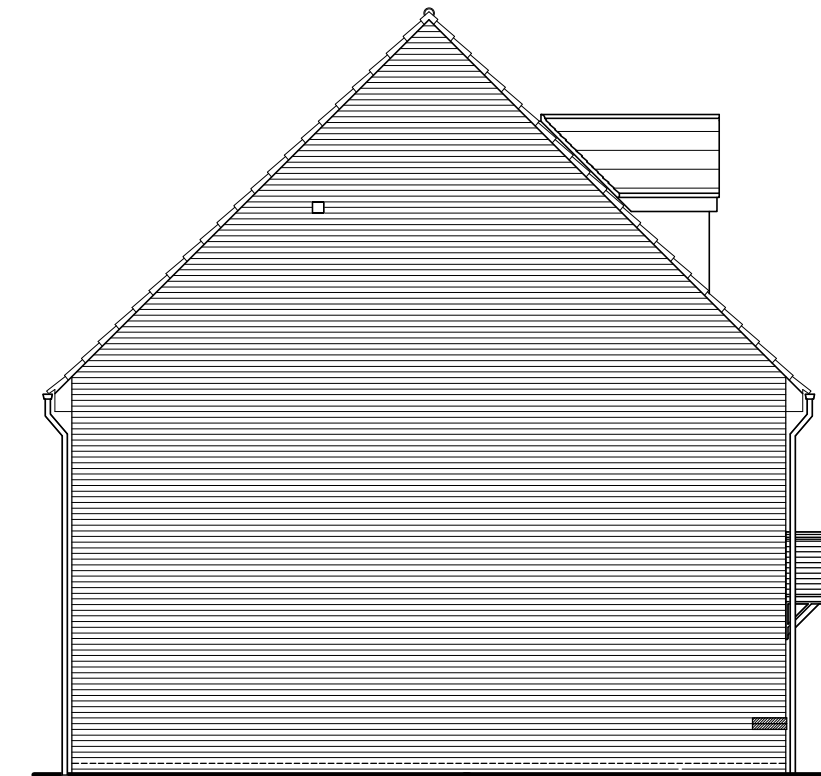
FRONT ELEVATION



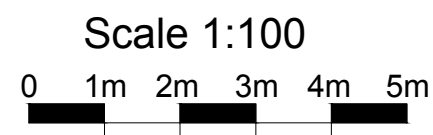
SIDE ELEVATION



REAR ELEVATION



SIDE ELEVATION



**BRAXTON**  
**NB31**  
3 BED 5 PERSON  
HOUSE

**HOUSING RANGE ISSUE 7**  
**PLANNING DRAWING**

**NB31/7/PL2 A**

**Taylor Wimpey**