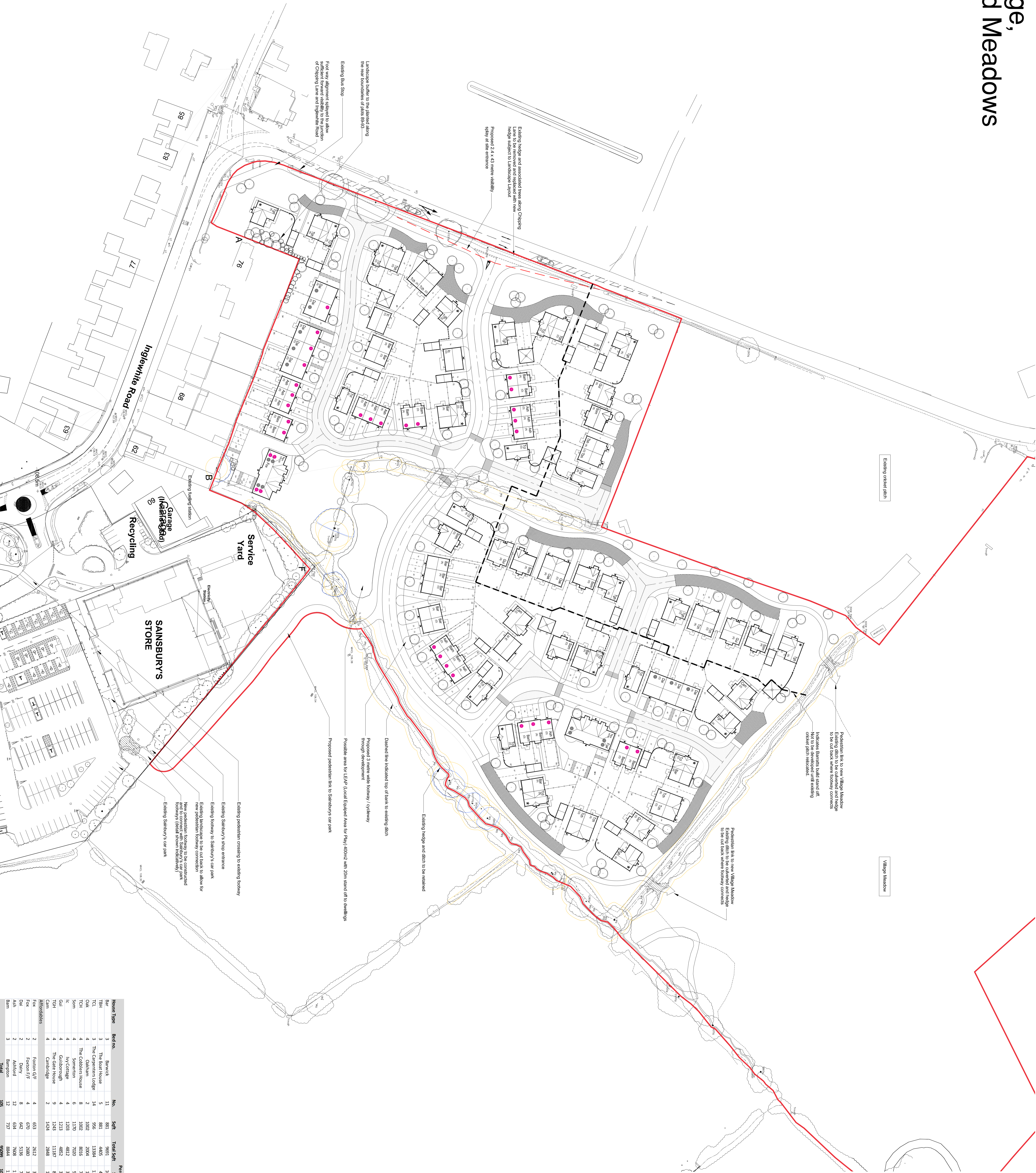
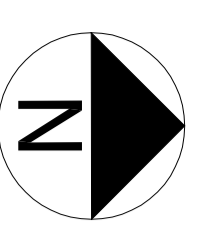


# Longridge, Bowland Meadows



Suite 109-110 Lovell House, Birchwood Park, Birchwood, Warrington WA3 5PW Tel: 01942 7116513 e-mail: graham.baldwin@tdc.gb.com

**Baldwin Design Ltd**

Project Title: Residential Redevelopment Longridge, Bowland Meadows

Drawing No: BHLP1/SL/01

Scale: 1:500

Date: 14/02/14

Page No: 01 of 01

**BARRATT**

Architectural Firm

Project Title: Residential Redevelopment Longridge, Bowland Meadows

Drawing No: BHLP1/SL/01

Scale: 1:500

Date: 14/02/14

Page No: 01 of 01

- Legend**
- Indicates housing provision for the elderly.
  - Indicates affordable housing provision.
  - Proposed dwelling and house type code.
  - (A) Dwelling handling shown per construction drawing
  - (B) Dwelling handling opposite to construction drawing
  - \* Dual aspect gable position.
  - Access / Door To Dwelling.
  - Proposed terrace with red clipping finish.
  - Herringbone block paving.
  - 1800mm high curved brick wall.
  - 1800mm high brick wall with piers and timber fence infill panels.
  - 1800mm high close boarded fence.
  - Line to delineate application site boundary.
  - Timber gates to be erected to rear garden/land on site layout.
  - Indicative position of new tree planting. (Refer to Landscape Layout for further details).
  - Indicates existing trees to be retained and protected during construction at all times.
  - Indicates existing trees to be removed.
  - A-B Indicates 1.8 metre high close boarded fence to be erected between points.
  - B-F Indicates 2.5 metre high acoustic fencing.
- Provision:**
- A. Emergency access retained. Accessory added and connected to storm block. Various gate sizes and moved. Changes to front boundary and development setting. Building footprint to the south. Various changes to front boundary and development setting. Building footprint to the south. Various changes to front boundary and development setting. Building footprint to the south.
- B. Various changes to front boundary and development setting. Building footprint to the south. Various changes to front boundary and development setting. Building footprint to the south.
- C. Various changes to front boundary and development setting. Building footprint to the south. Various changes to front boundary and development setting. Building footprint to the south.
- D. Various changes to front boundary and development setting. Building footprint to the south. Various changes to front boundary and development setting. Building footprint to the south.
- E. Various changes to front boundary and development setting. Building footprint to the south. Various changes to front boundary and development setting. Building footprint to the south.
- F. Various changes to front boundary and development setting. Building footprint to the south. Various changes to front boundary and development setting. Building footprint to the south.
- G. Various changes to front boundary and development setting. Building footprint to the south. Various changes to front boundary and development setting. Building footprint to the south.
- H. Various changes to front boundary and development setting. Building footprint to the south. Various changes to front boundary and development setting. Building footprint to the south.
- I. Various changes to front boundary and development setting. Building footprint to the south. Various changes to front boundary and development setting. Building footprint to the south.
- J. Various changes to front boundary and development setting. Building footprint to the south. Various changes to front boundary and development setting. Building footprint to the south.
- K. Various changes to front boundary and development setting. Building footprint to the south. Various changes to front boundary and development setting. Building footprint to the south.
- L. Various changes to front boundary and development setting. Building footprint to the south. Various changes to front boundary and development setting. Building footprint to the south.
- M. Various changes to front boundary and development setting. Building footprint to the south. Various changes to front boundary and development setting. Building footprint to the south.