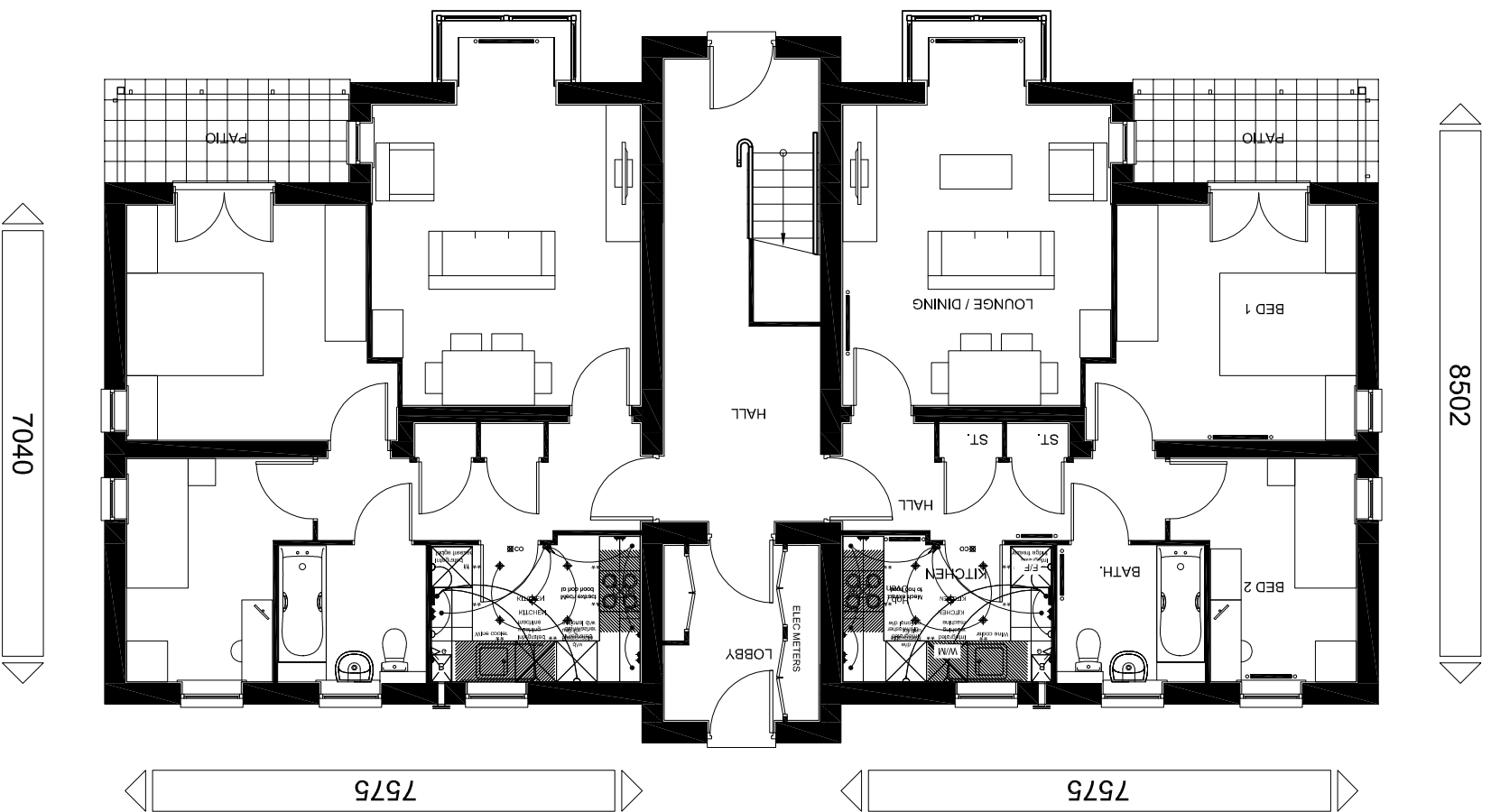


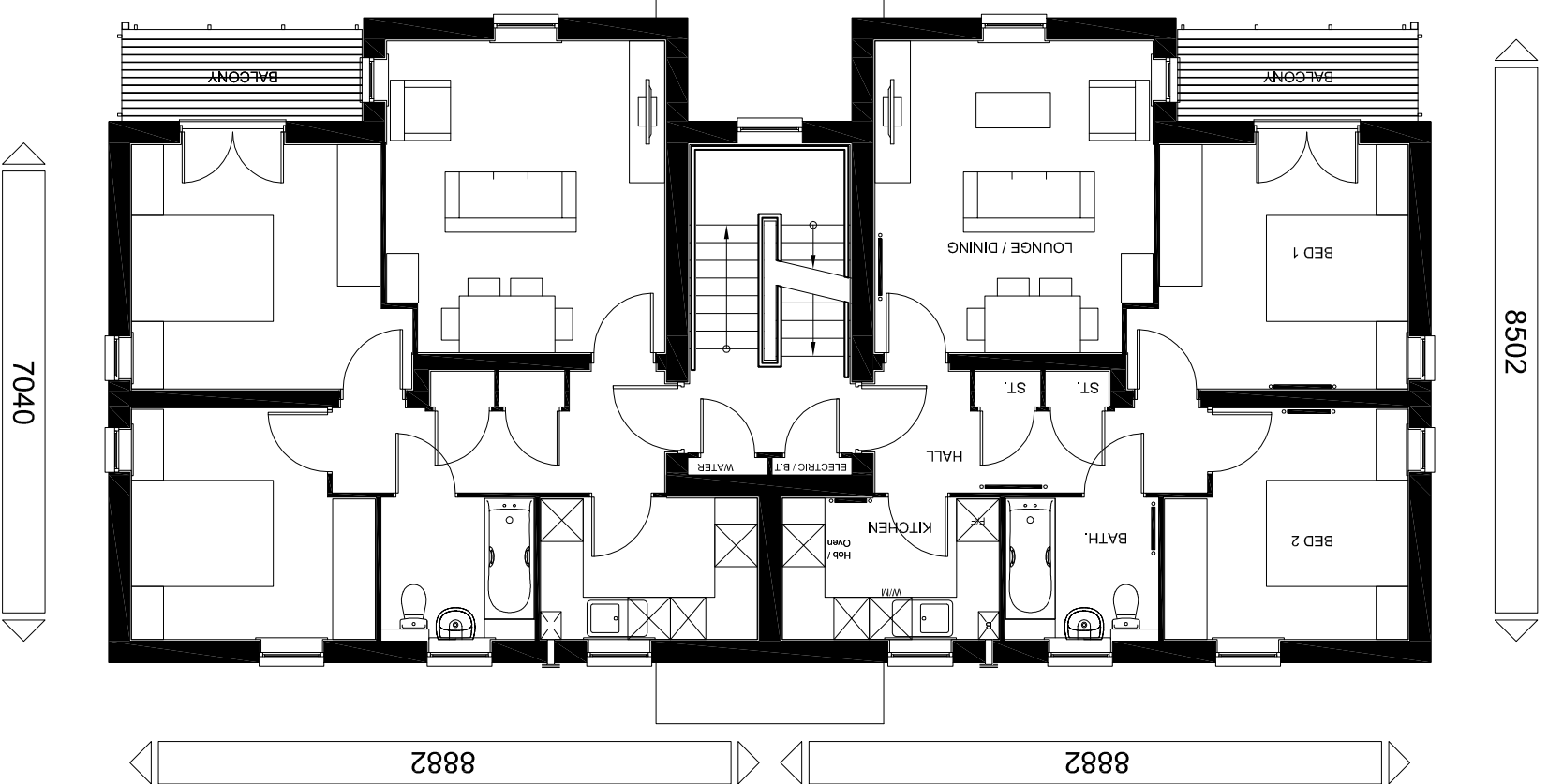
# GROUND FLOOR PLAN - BFXB 00CG

APT FLOOR AREA - 653sqft / 60.7m<sup>2</sup>



# FIRST FLOOR PLAN - BFXB 00CF

APT FLOOR AREA - 665sqft / 61.8m<sup>2</sup>



**BARRA TT**  
DEVELOPMENTS PLC

Group Design & Technical Department

BarraTT House  
City West Business Park  
Scotswood Road  
NEWCASTLE UPON TYNE  
NE4 7DF  
Tel: 0191 298 6100  
Fax: 0191 296 8324

House Type Code

**BN42 S306**

## 2010 Range - The Foxton (3 STOREY WITH BALCONY)

**WARNING TO HOUSE-PURCHASERS, Property Misdescriptions Act 1991.**  
Buyers are warned that this is a working drawing and the contents of this drawing may be subject to change at any time and alterations and variations can occur during the progress of the build process. As such the layout, form, content and dimensions of the finished construction may differ materially from those shown. Whilst we make every effort to ensure our drawings are up to date there may from time to time be an unavoidable delay in updating these due to changes in regulations and/or re-branding. Purchasers are advised to check with the Sales Adviser whether any alterations have been made to this drawing. The contents of this drawing do not constitute a contract, part of any contract or warranty.

## PLANNING DRAWING 2 of 2 - CLASSIC

Date	MAR 2014	Scale	1 : 100 @ A3
Drawn by	GDT	2010/FOX-3B/C/02	
Checked by	GDT		
Revision			