




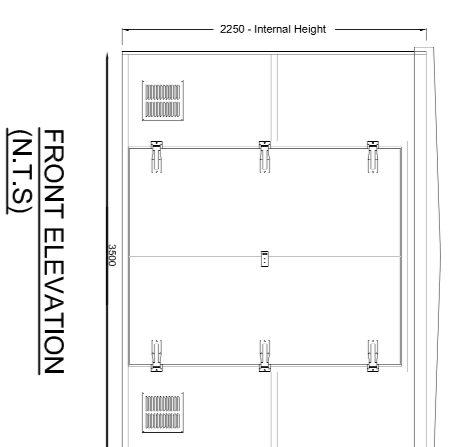
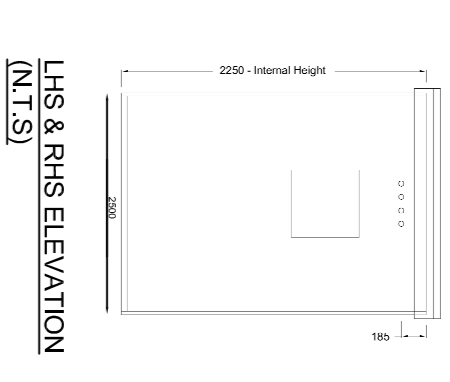

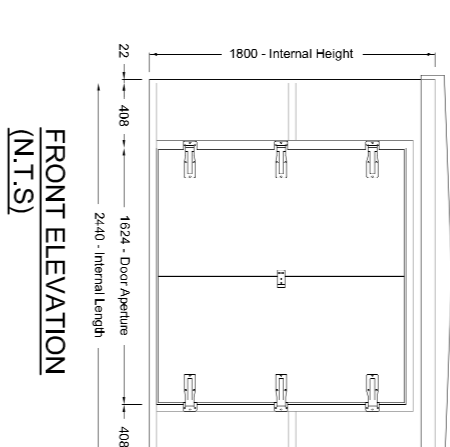
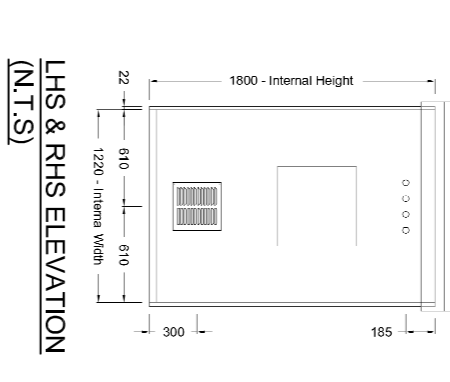

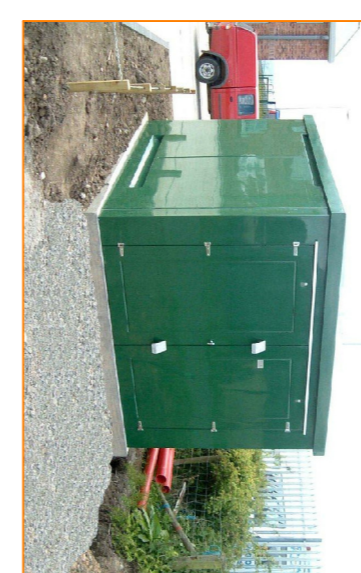
Based on: Day No.	Rev
Submitted No.	Rev
Issue Date No.	Rev
Other Day No.	Rev
Other Day No.	Rev

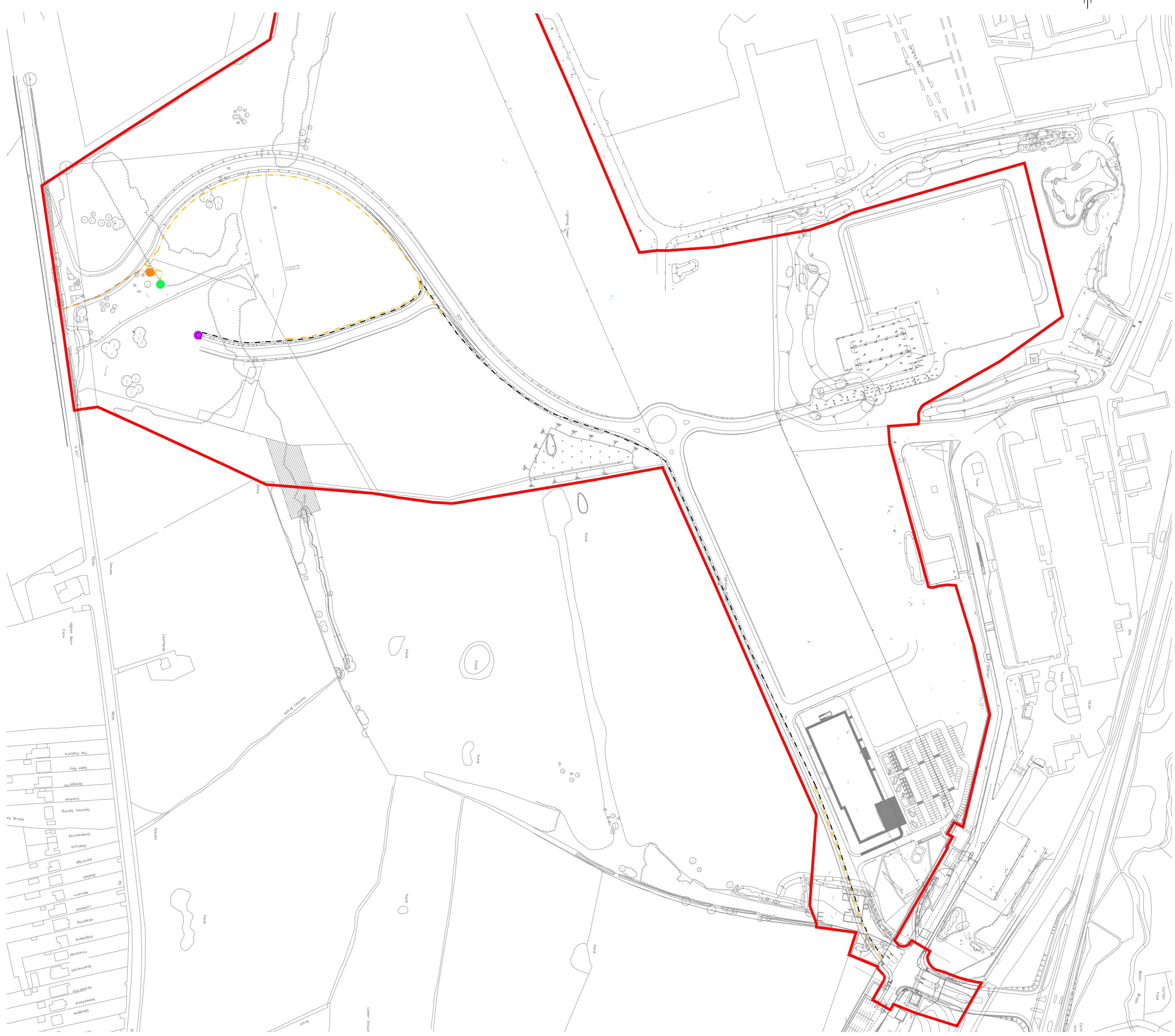
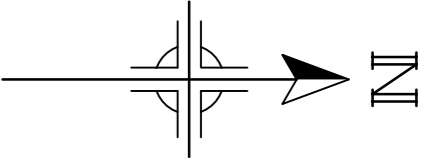
THIS DRAWING MAY INDICATE ELEMENTS RELATED TO FIRE SYSTEMS. THESE ARE INDICATIVE ONLY AND FINAL NUMBER, POSITIONING AND PERFORMANCE MUST BE ESTABLISHED AS PART OF THE CDP WORKS TO MAINTAIN THE INTENT OF THE DESIGN FIRE STRATEGY

NOTES:

LEGEND

	P-IPG	PROPOSED INTERMEDIATE PRESSURE GAS SUPPLY
	P-MFG	PROPOSED MEDIUM PRESSURE GAS SUPPLY
	P-HW	PROPOSED HIGH VOLTAGE DUCT

LOCATION KEY	<p>LEGEND DETAILS</p> <div style="display: flex; justify-content: space-around;"> <div data-bbox="1743 237 1953 445"> <p>FRONT ELEVATION (N.T.S)</p>  </div> <div data-bbox="1743 504 1953 682"> <p>LHS & RHS ELEVATION (N.T.S)</p>  </div> </div> <p>PLANNING DESCRIPTION INTERMEDIATE PRESSURE TO MEDIUM PRESSURE GAS GOVERNOR IN KIOSK FINISH: GRP BRITISH RAJING GREEN.</p>
<p></p>	<p>PLANNING DESCRIPTION MEDIUM PRESSURE TO LOW PRESSURE GAS GOVERNOR IN KIOSK FINISH: GRP BRITISH RAJING GREEN.</p> <div style="display: flex; justify-content: space-around;"> <div data-bbox="1407 237 1617 445"> <p>FRONT ELEVATION (N.T.S)</p>  </div> <div data-bbox="1407 504 1617 682"> <p>LHS & RHS ELEVATION (N.T.S)</p>  </div> </div> <p>APPROXIMATE DIMENSIONS 3m x 3.5m x 2.5m HEIGHT</p>
<p></p>	<p>PLANNING DESCRIPTION 1 MVA SUBSTATION WITH ENCLOSURE FINISH: GRP BRITISH RAJING GREEN.</p> 



Issue	Date	Description	By	Chkd	Verfd
P4	05.11.19	PLANNING ISSUE	AW	JH	MH
P3	01.11.19	PLANNING ISSUE	AW	JH	MH
P2	05.09.19	AMENDED TO SUIT COMMENTS	AW	JH	MH
P1	04.09.19	FIRST ISSUE	AW	JH	MH

Project
SAMLESBURY ENTERPRISE ZONE

Client
LANCASHIRE COUNTY COUNCIL

Title
FIRST PHASE UTILITIES
GAS & ELECTRIC G.A

Drawing Status
ISSUED FOR PLANNING

Project No.
1023121

Scale
1:2000



7th Floor, 11 George Enescu Street,
Buckley,
010301 Remondis,
Tel: +40 21 230 6068
Website: www.cundall.com

Drawing No.
SEZ-CDL-XX-00-DR-M-9001