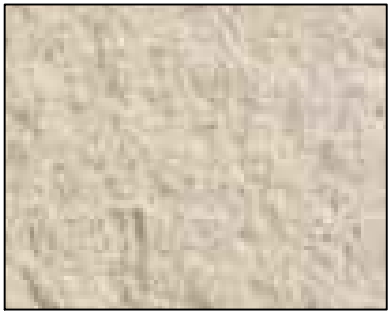
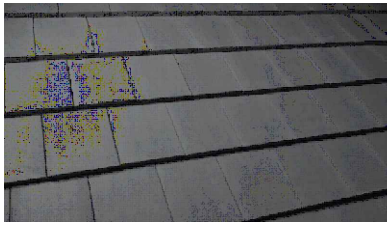


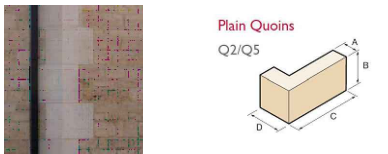
Waddow View, Clitheroe Proposed Materials Palette.



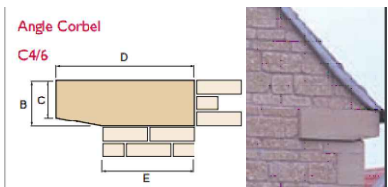
Render: Weber Ivory Finish



Roof Tile: Russell Grampian Slate Grey



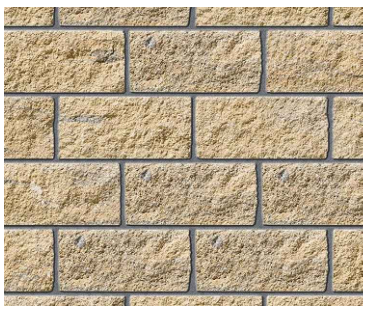
Plain Quoins: Forticrete Cast Stone Bath



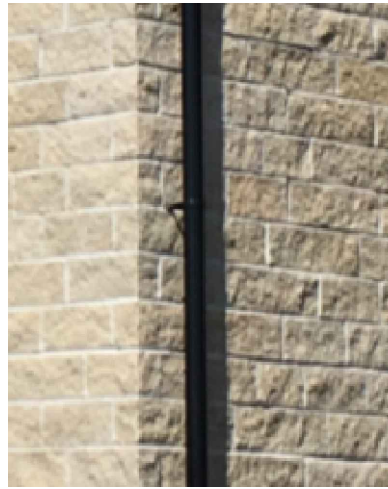
Angle Corbel: Forticrete Cast Stone Bath



Timber Door Canopy & Gallows Brackets: Tiles to match main roof tile



Stone: Edenhall Darlstone Walling Buff Black Split



Rainwater Pipes: Black UPVC Goods



Windows: White UPVC with Stone Surround (Forticrete Cast Stone Bath)



Front Door: Ian Firth 'Cottage Superior' - Black

Rev	Amendment	Drawn/Date
A	Materials palette updated to show exact materials proposed to be used on our waddow view development.	JC05.04.19

BARRATT HOMES
 Barratt/David Wilson Homes
 North West
 303 Bridgewater Place
 2nd Floor
 Warrington
 Cheshire
 WA3 6XF
 TEL: 01925 846600

DAVID WILSON HOMES
 WHERE QUALITY LIVES

Project
Waddow View
 Clitheroe

Drawing Title
Proposed Materials Palette

Status
For Approval

Scale
NTS @ A3

Date
05-02-19

Drawn By
JW

Drawing Ref	Revision
WADV-MP	A