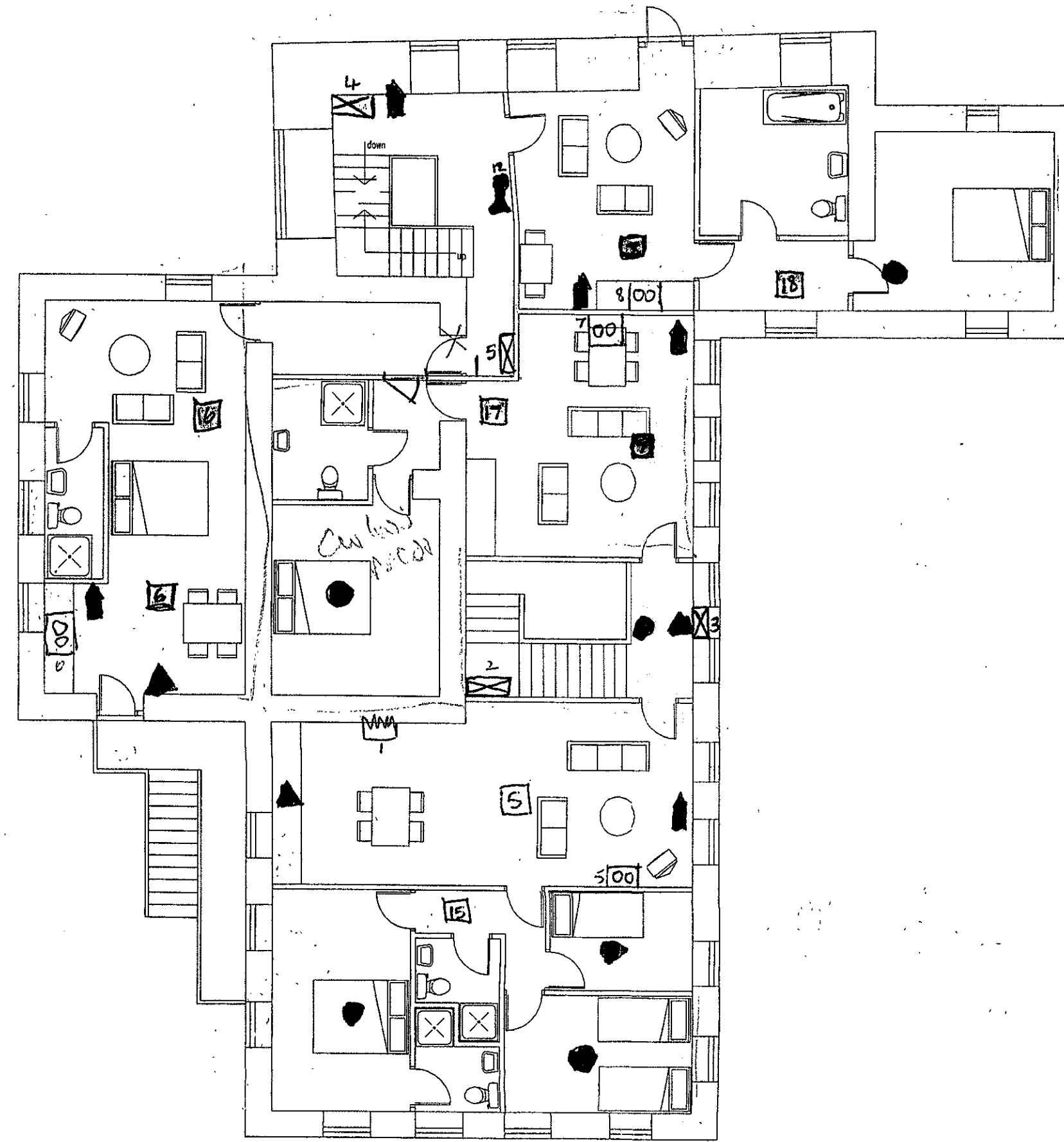
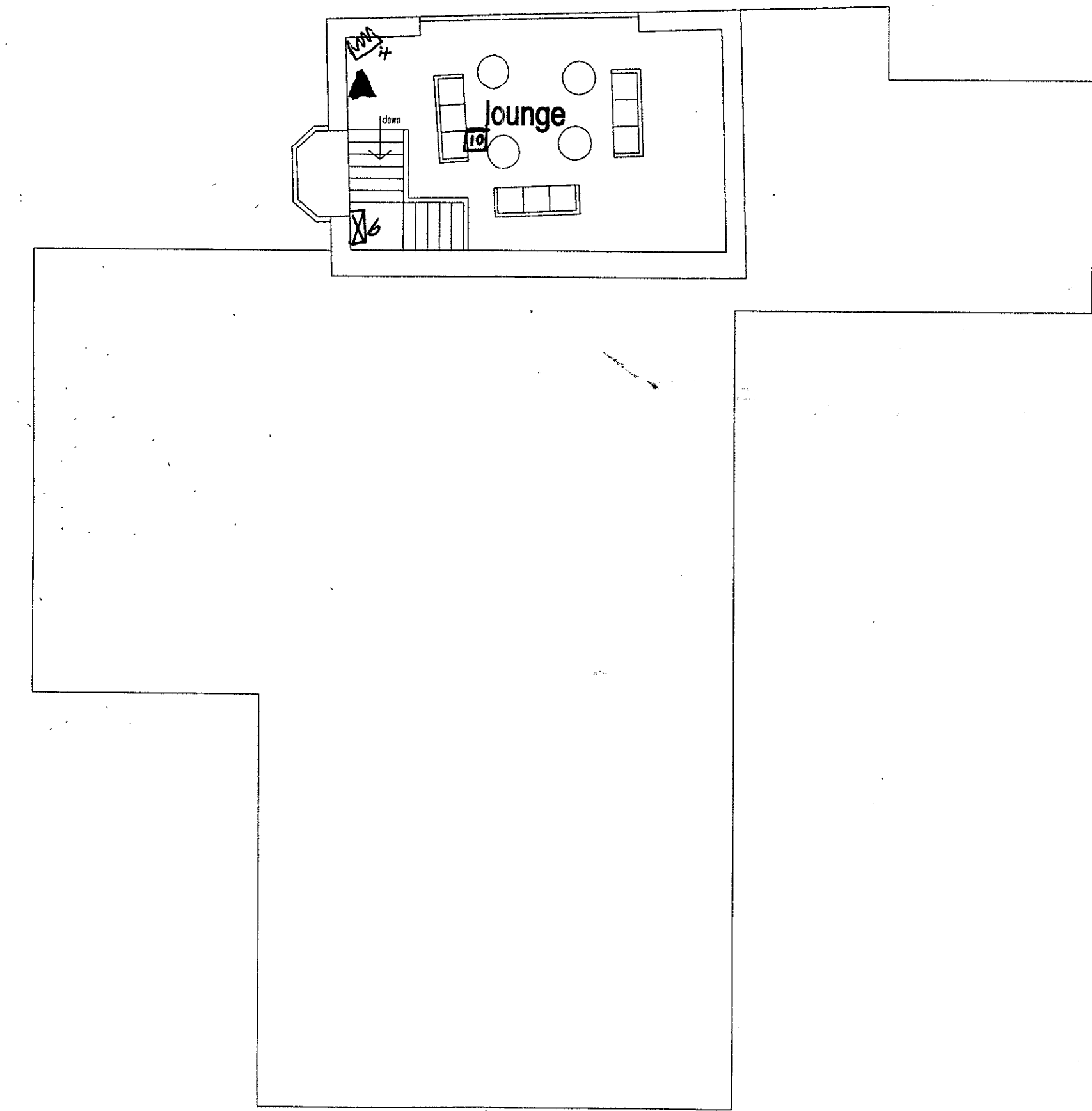


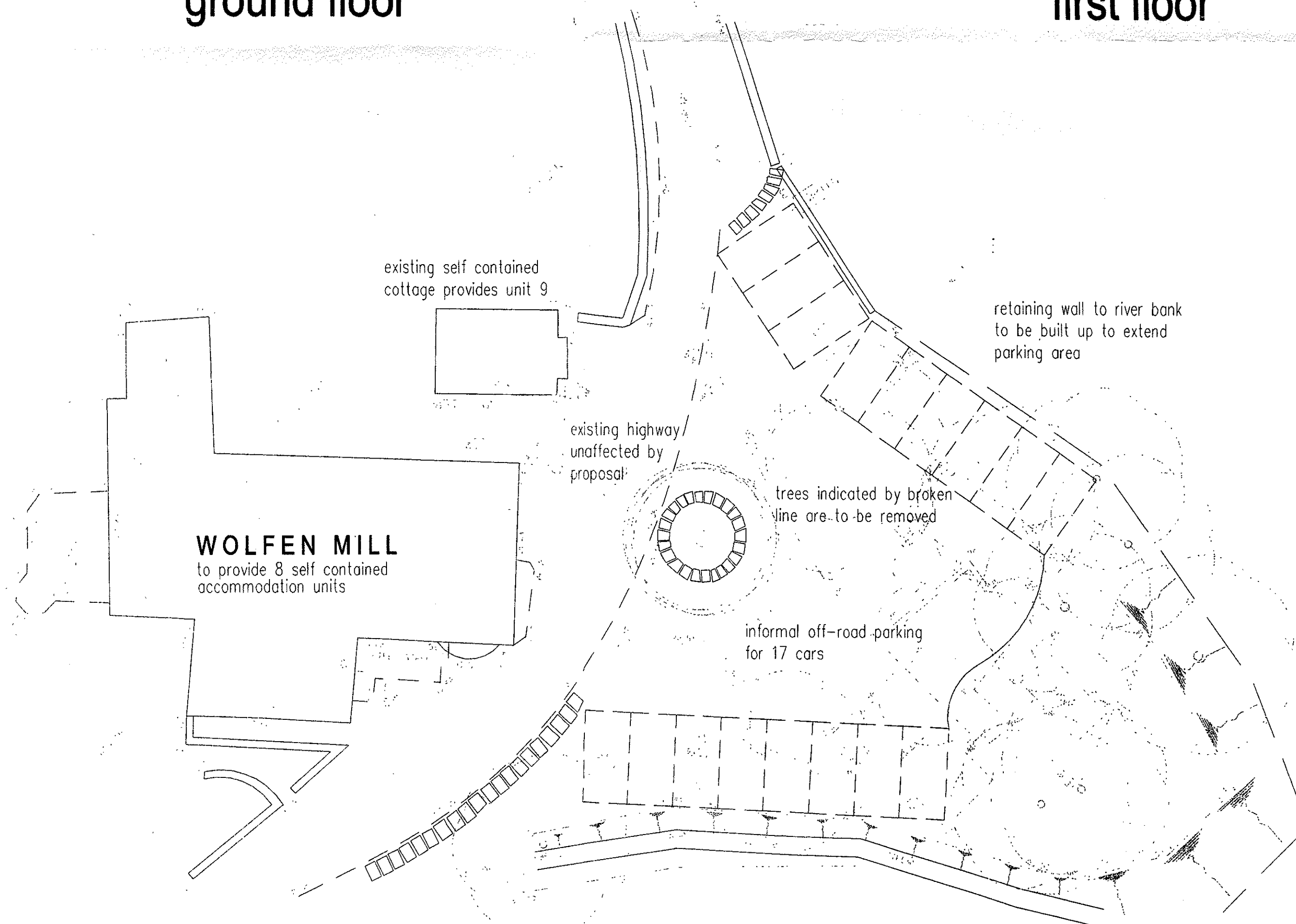
ground floor



first floor



second floor



site plan

indicating proposed parking arrangements

existing self contained cottage provides unit 9

retaining wall to river bank to be built up to extend parking area

existing highway/ unaffected by proposal

trees indicated by broken line are to be removed

informal off-road parking for 17 cars

landscaping details to be approved by Ribbles Valley BC before commencement of work on site

- ▲ CALL POINTS
- SMOKE OR HEAT DETECTORS
- SOUNDERS
- ⊗ EMERGENCY LIGHTING
- ↑ FIRE EXTINGUISHER
- ⚡ FIRES
- ☐ COOKERS

3 20130419 P

proposed change of use to provide 9 self contained accommodation units with communal facilities at

Wolfen Mill Chipping

scale 1:100 1:200