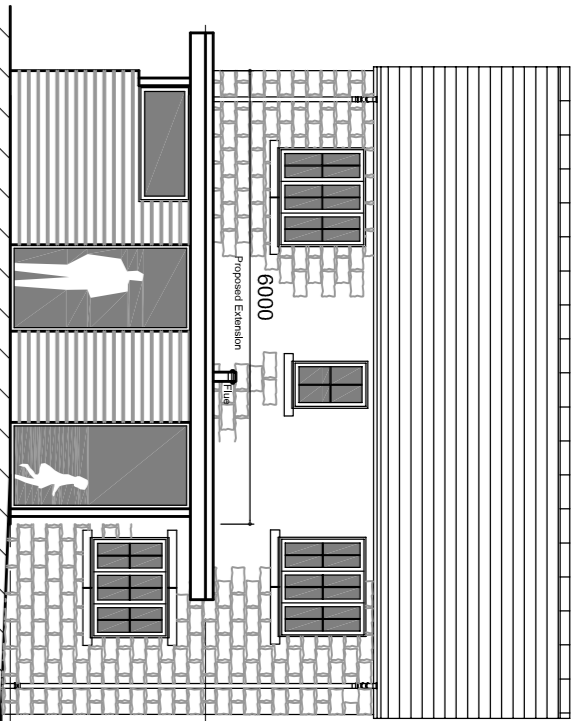
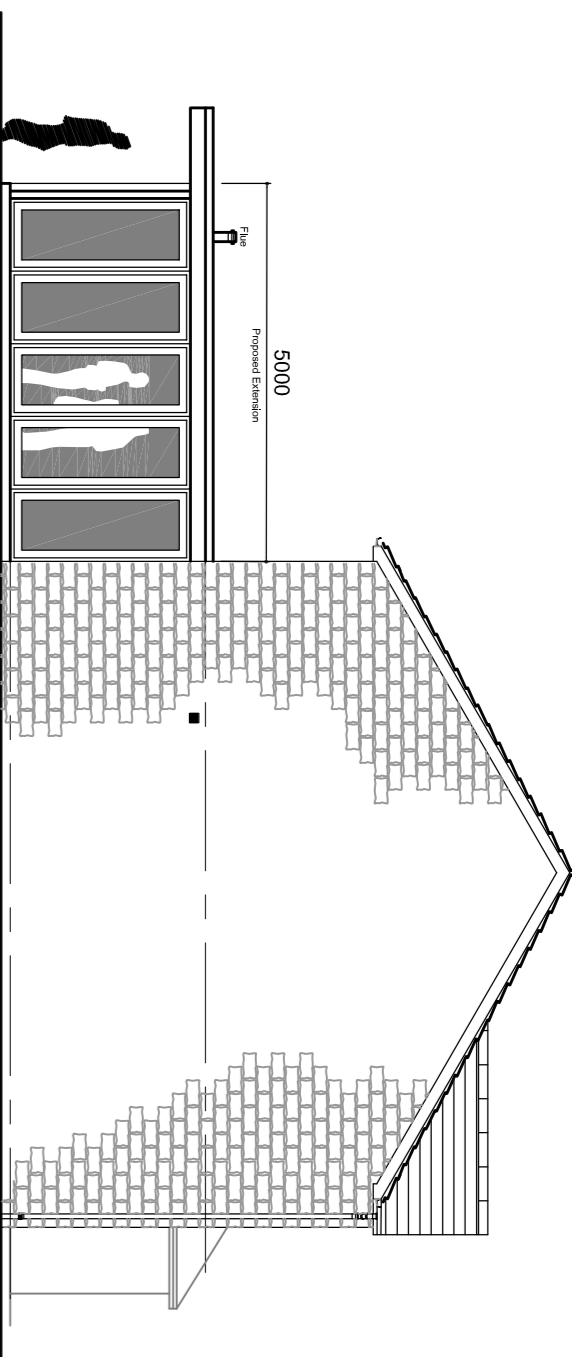




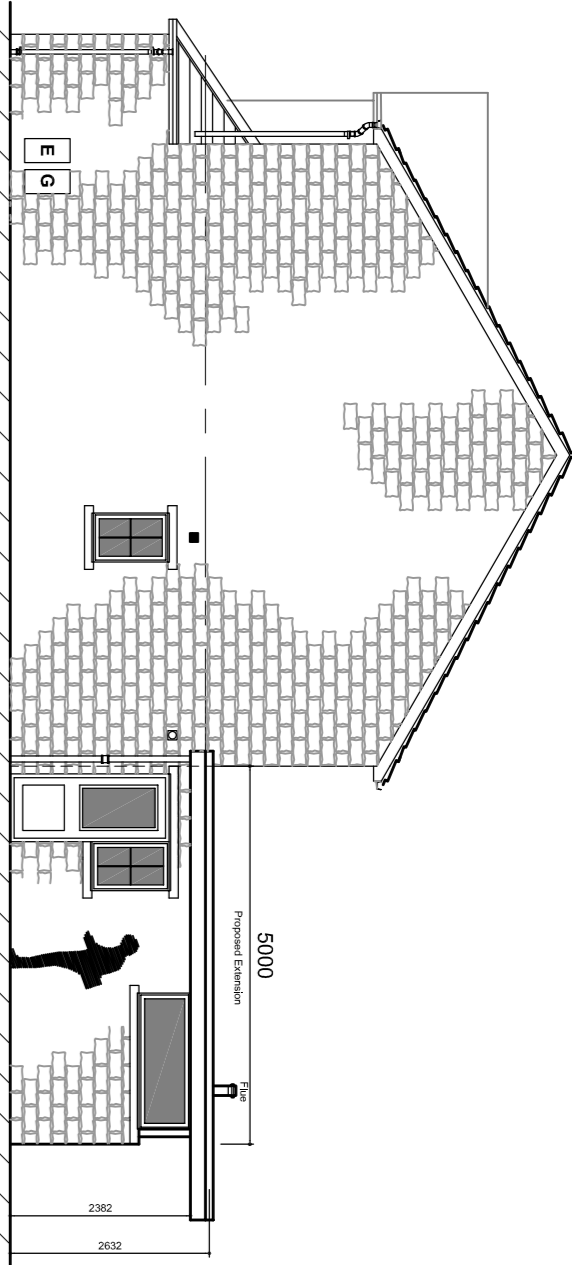
Front Elevation



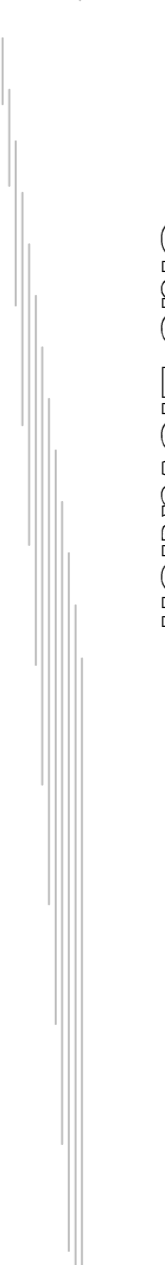
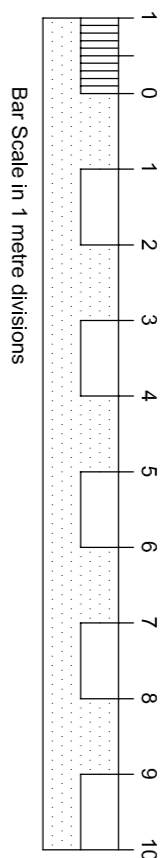
Rear Elevation



Side Elevation



Side Elevation



1. This drawing and the copyrights and patents therein are the designers property and may be used or reproduced only under contract.
2. Contractors and sub contractors must check and agree all dimensions before preparing shop drawings or commencing work on site.
3. Contractors are responsible for informing the designer of any discrepancy discovered on this drawing or between this drawing and any other related documents issued in respect of the work.
4. Written dimensions only are to be used from this drawing. If any doubt exists the contractor must ask for clarification.
5. On no account must the contractor scale of this drawing.
6. All work must be carried out in accordance with the current Building Regulations and all work must be carried out in accordance with the current Building Regulations and all work must be carried out in accordance with the current Building Regulations.

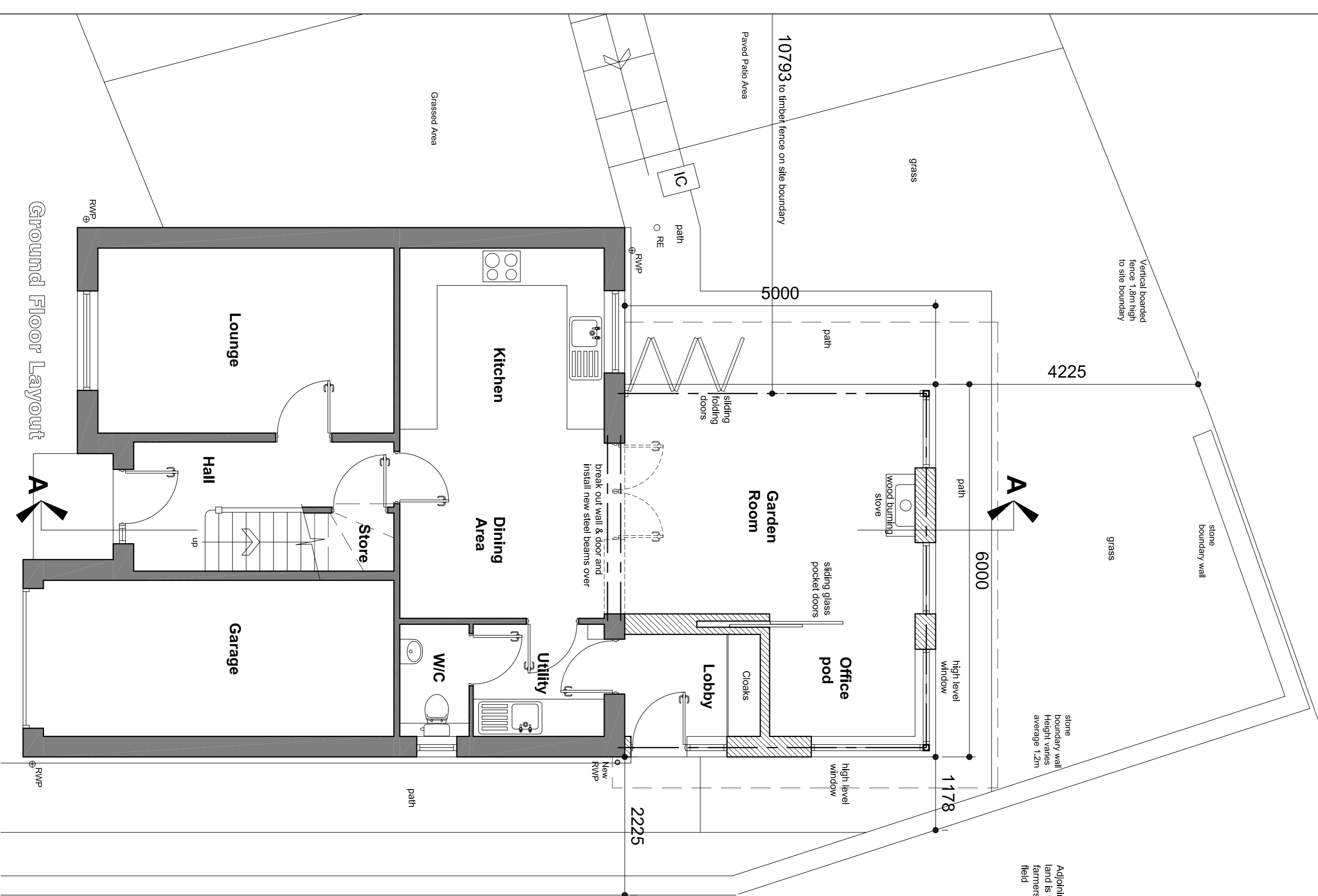
The Construction Design and Management Regulations 2015:-

Under CDMA 2015 the domestic client has a duty and also the responsibility of appointing a Principle Designer (PD) which can be the appointed contractor or a suitably qualified person, whose role it is to identify any special hazards in the carrying out of the construction works and prepare a Health & Safety Plan if necessary. This should be a formal agreement and could involve the services of a specialist Principle Designer.

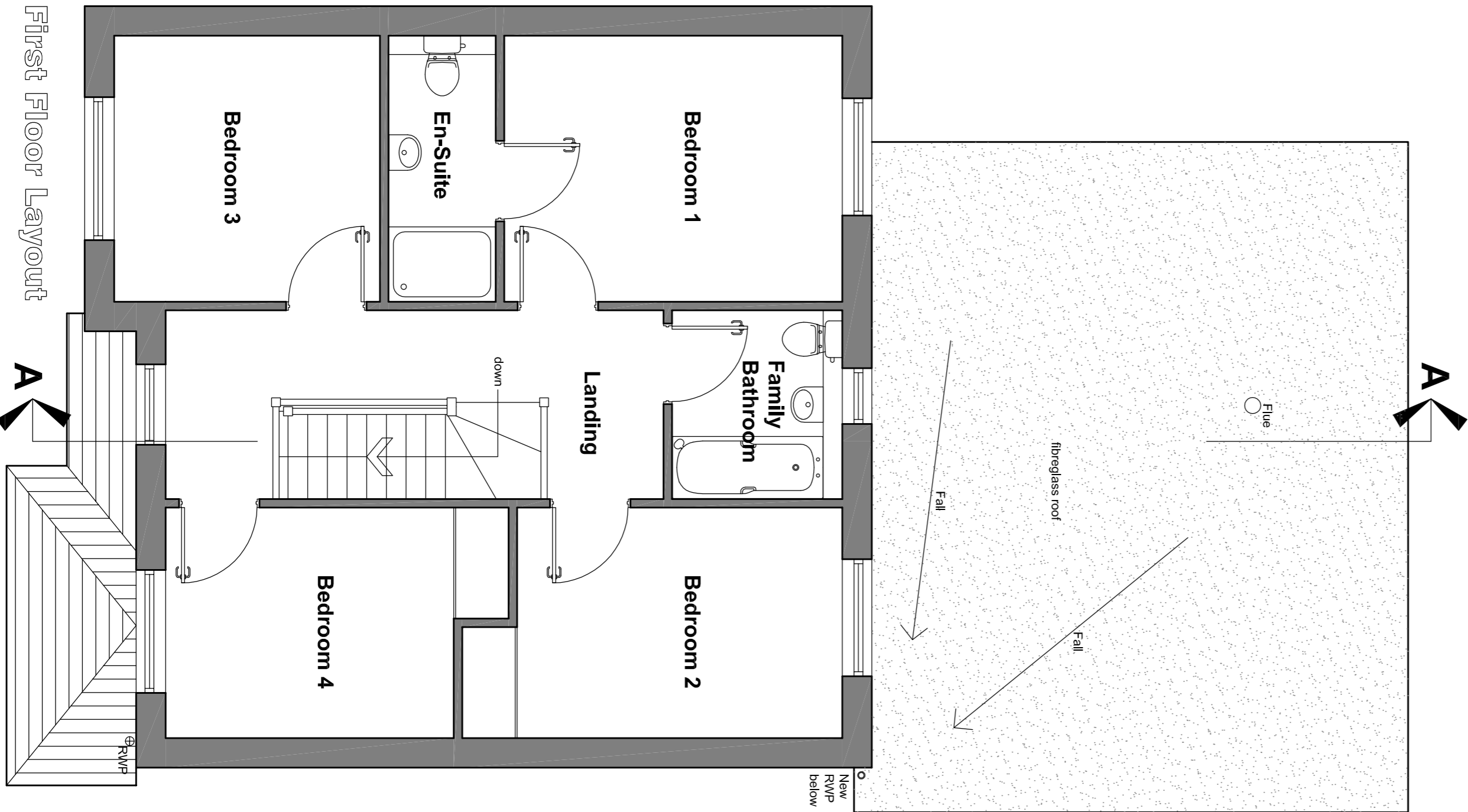
If you require any further assistance please contact this office.

This drawing has been prepared for Mr & Mrs P Marsden for the proposed rear extension and is submitted as part of the planning application for the rear extension and is not intended to be used by any other person or for any other purpose.

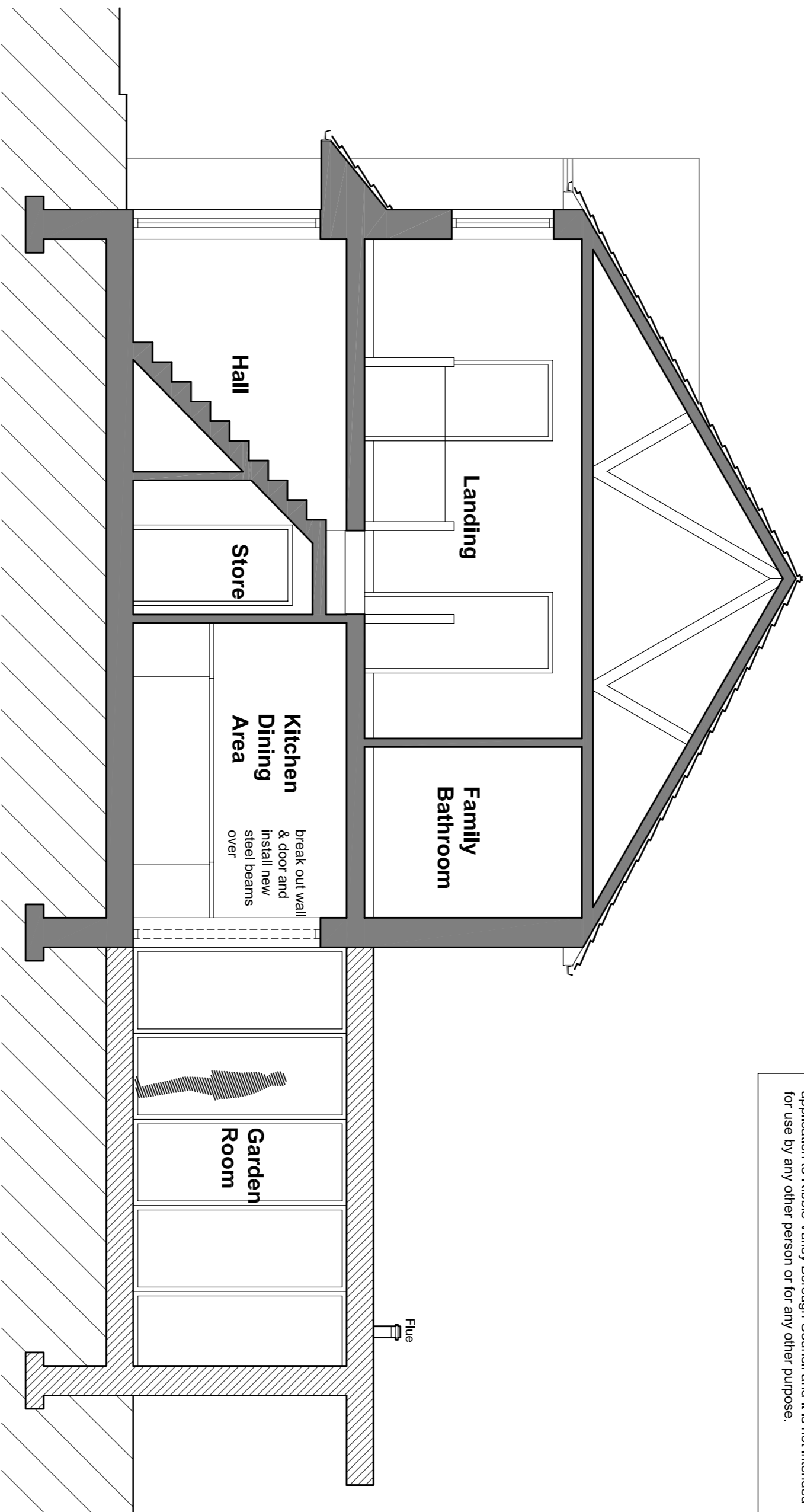
PROPOSED EXTERNAL FINISHES
Roof: Grey fibreglass finish to flat roof to the Garden Room extension.
Walls: Natural stonework to match the existing and timber cladding to garden views.
Rain water goods: Corrugated galter system to the Garden Room and black circular downpipes.
Doors & Windows: Grey metal doors and sliding folding elevations. White glazed sealed units as indicated on the elevations.



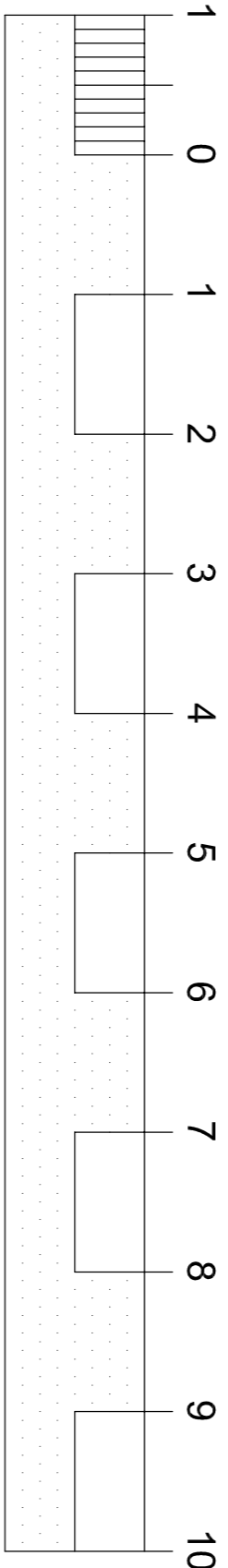
Ground Floor Layout



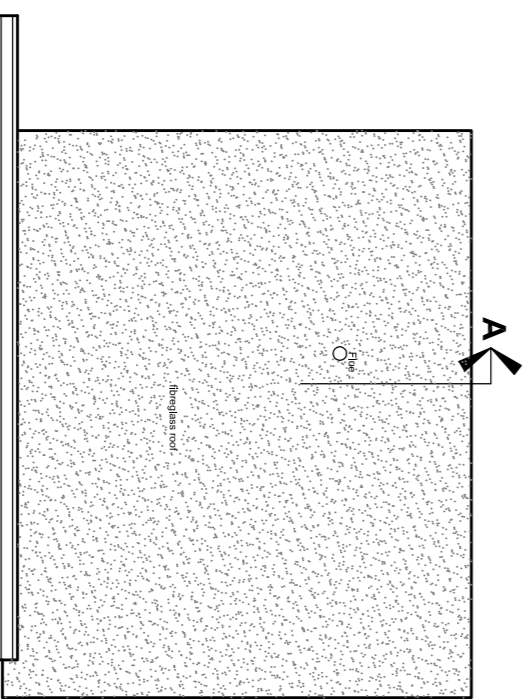
First Floor Layout



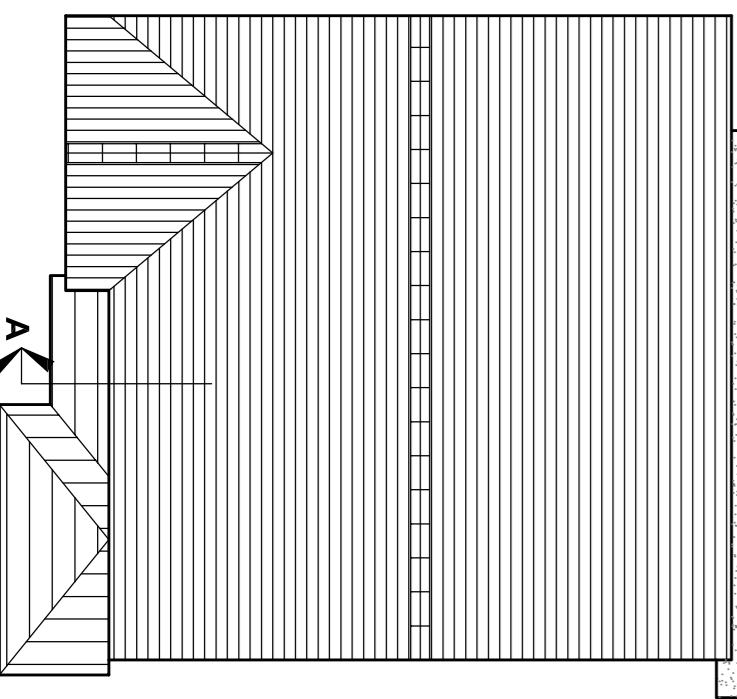
Section A-A



Bar Scale in 1 metre divisions



Roof Plain
Scale 1:100



Roof Plain
Scale 1:100

client		drawing title		scale		date		drawing No		rev	
Mr & Mrs P Marsden		Scheme A		1:50 & 1:100		April		SKA01		A	
project		Proposed rear extension at 25 Strawberry Fields Gisburn Lancashire BB7 4DQ		@ A1		2018					
5 Hawshaw Lodge Barn Skipton Old Road Lofersdale, Keighley West Yorkshire. BD20 8HP		Telephone : 01535 630596 E-mail : gary@g-a-services.com									
architectural services ltd											
architectural services ltd											
architectural services ltd											
architectural services ltd											
architectural services ltd											
architectural services ltd											
architectural services ltd											
architectural services ltd											
architectural services ltd											
architectural services ltd											
architectural services ltd											
architectural services ltd											
architectural services ltd											
architectural services ltd											
architectural services ltd											
architectural services ltd											
architectural services ltd											
architectural services ltd											
architectural services ltd											
architectural services ltd											
architectural services ltd											
architectural services ltd											
architectural services ltd											
architectural services ltd											
architectural services ltd											
architectural services ltd											
architectural services ltd											
architectural services ltd											
architectural services ltd											
architectural services ltd											
architectural services ltd											
architectural services ltd											
architectural services ltd											
architectural services ltd											
architectural services ltd											
architectural services ltd											
architectural services ltd											
architectural services ltd											
architectural services ltd											
architectural services ltd											
architectural services ltd											
architectural services ltd											
architectural services ltd											
architectural services ltd											
architectural services ltd											
architectural services ltd											
architectural services ltd											
architectural services ltd											
architectural services ltd											
architectural services ltd											
architectural services ltd											
architectural services ltd											
architectural services ltd											
architectural services ltd											
architectural services ltd											
architectural services ltd											
architectural services ltd											
architectural services ltd											
architectural services ltd											
architectural services ltd											
architectural services ltd											
architectural services ltd											
architectural services ltd											
architectural services ltd											
architectural services ltd											
architectural services ltd											
architectural services ltd											
architectural services ltd											
architectural services ltd											
architectural services ltd											
architectural services ltd											